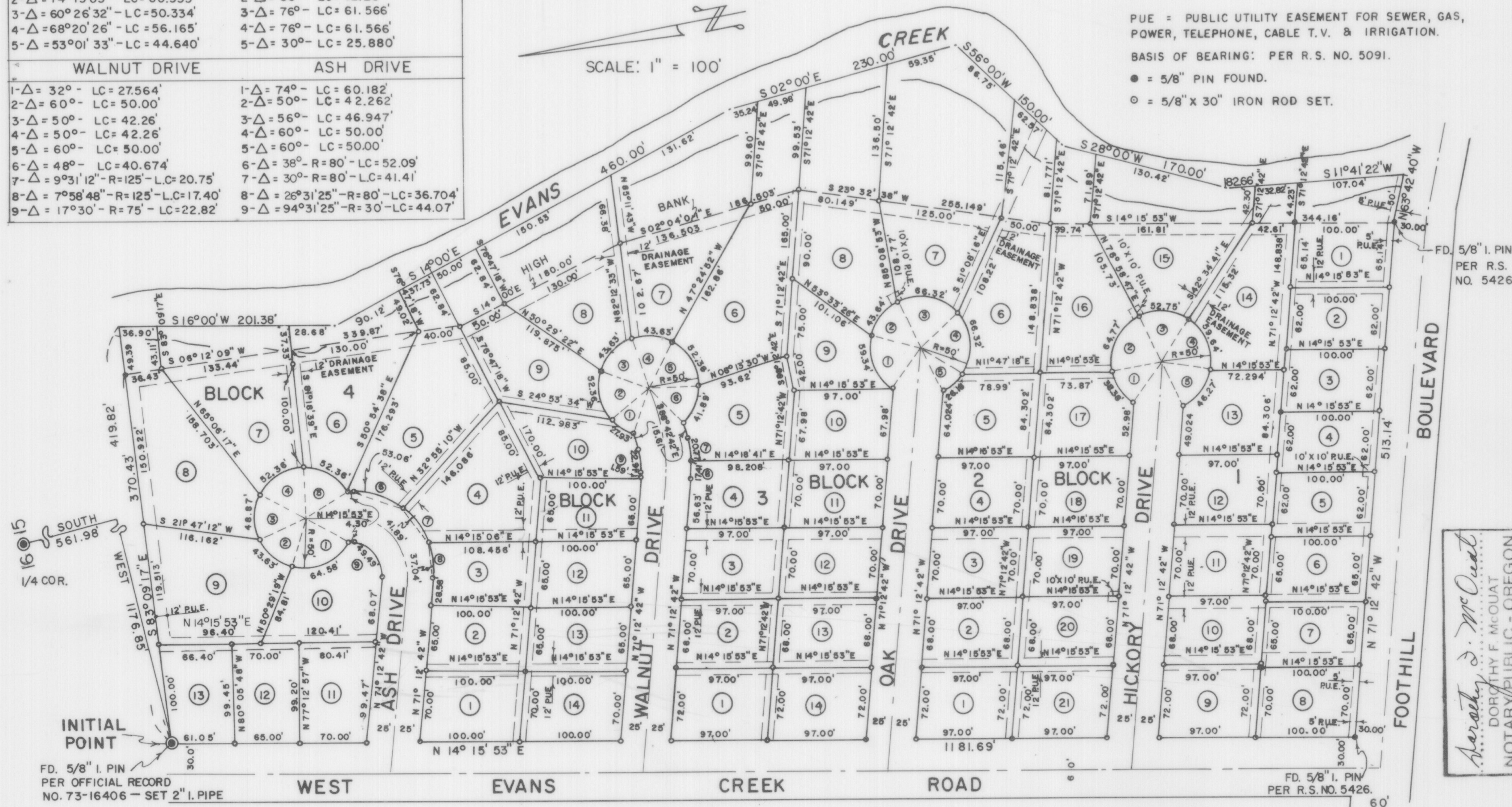


WOODVILLE PARK SUBDIVISION

LOCATED IN SE 1/4 SEC. 16, T. 36 S., R. 4 W., W.M., JACKSON COUNTY, OREGON, CITY OF ROGUE RIVER

CURVE DATUM	
HICKORY DRIVE	OAK DRIVE
1-Δ = 43°58'26" - LC = 37.439'	1-Δ = 68° - LC = 55.92'
2-Δ = 74°13'03" - LC = 60.333'	2-Δ = 50° - LC = 42.26'
3-Δ = 60°26'32" - LC = 50.334'	3-Δ = 76° - LC = 61.566'
4-Δ = 68°20'26" - LC = 56.165'	4-Δ = 76° - LC = 61.566'
5-Δ = 53°01'33" - LC = 44.640'	5-Δ = 30° - LC = 25.880'
WALNUT DRIVE	ASH DRIVE
1-Δ = 32° - LC = 27.564'	1-Δ = 74° - LC = 60.182'
2-Δ = 60° - LC = 50.00'	2-Δ = 50° - LC = 42.262'
3-Δ = 50° - LC = 42.26'	3-Δ = 56° - LC = 46.947'
4-Δ = 50° - LC = 42.26'	4-Δ = 60° - LC = 50.00'
5-Δ = 60° - LC = 50.00'	5-Δ = 60° - LC = 50.00'
6-Δ = 48° - LC = 40.674'	6-Δ = 38° - R = 80' - LC = 52.09'
7-Δ = 9°31'12" - R = 125' - LC = 20.75'	7-Δ = 30° - R = 80' - LC = 41.41'
8-Δ = 7°58'48" - R = 125' - LC = 17.40'	8-Δ = 26°31'25" - R = 80' - LC = 36.704'
9-Δ = 17°30' - R = 75' - LC = 22.82'	9-Δ = 94°31'25" - R = 30' - LC = 44.07'

SCALE: 1" = 100'



PUE = PUBLIC UTILITY EASEMENT FOR SEWER, GAS, POWER, TELEPHONE, CABLE T.V. & IRRIGATION.
BASIS OF BEARING: PER R.S. NO. 5091.
● = 5/8" PIN FOUND.
○ = 5/8" X 30" IRON ROD SET.

DEDICATION

KNOW ALL MEN BY THESE PRESENTS THAT WE, DAVID KIRKWOOD AND JO ANN KIRKWOOD, HUSBAND AND WIFE, ARE THE OWNERS IN FEE SIMPLE OF THE LANDS HEREIN DESCRIBED, AND THAT WE HAVE SUBDIVIDED THE SAME INTO LOTS, BLOCKS AND STREETS AS SHOWN HEREON AND THAT THE NUMBER AND SIZE OF THE LOTS AND LENGTH OF ALL LINES ARE PLAINLY SET FORTH AND THIS PLAT IS A CORRECT REPRESENTATION OF THE SAID SUBDIVISION AND WE DO HEREBY DEDICATE TO THE PUBLIC FOR PUBLIC USE ALL STREETS HEREON TOGETHER WITH ALL EASEMENTS AS SHOWN HEREON AND WE DO HEREBY DEDICATE SAID SUBDIVISION AS: "WOODVILLE PARK SUBDIVISION".

IN WITNESS WHEREOF WE HAVE SET OUR HANDS AND SEALS THIS 18th DAY OF March, 1975 A.D.

David Kirkwood
DAVID KIRKWOOD

Jo Ann Kirkwood
JO ANN KIRKWOOD

STATE OF OREGON S.S.
COUNTY OF JACKSON S.S.
MARCH 18, 1975 A.D.

PERSONALLY APPEARED THE ABOVE NAMED DAVID KIRKWOOD AND JO ANN KIRKWOOD, HUSBAND AND WIFE, AND ACKNOWLEDGED THE FOREGOING INSTRUMENT TO BE THEIR VOLUNTARY ACT AND DEED.

BEFORE ME: Dorothy F. McQuat
NOTARY PUBLIC OF OREGON

MY COMMISSION EXPIRES THE 18th DAY OF May, 1976 A.D.

EXAMINED AND APPROVED BY THE GRANTS PASS IRRIGATION DISTRICT THIS 20 DAY OF MARCH, 1975.

Paul Brandon
PRESIDENT

Henry H. Geiske
SECRETARY

I CERTIFY THAT PURSUANT TO AUTHORITY GRANTED TO ME BY THE ROGUE RIVER PLANNING COMMISSION IN OPEN MEETING OF APRIL 4th, 1975. THIS PLAT IS HEREBY APPROVED BY THE ROGUE RIVER PLANNING COMMISSION.

DATED THIS 4th DAY OF April, 1975 A.D.
ATTEST: Ken R. Wood
PRESIDENT

John M. Bunker
SECRETARY

EXAMINED AND APPROVED THIS 9th DAY OF APRIL, 1975 A.D.

Ray E. Stewart
DIRECTOR OF ASSESSMENT AND TAXATION

EXAMINED AND RECOMMENDED FOR APPROVAL BY THE BOARD OF COUNTY COMMISSIONERS THIS 9th DAY OF APRIL, 1975 A.D.

E. J. McQuat
COUNTY SURVEYOR

C. B. Hansen
DEPUTY

FOR ORDER OF THE BOARD OF COUNTY COMMISSIONERS APPROVING THIS PLAT SEE VOLUME 80 PAGE 528 OF THE COUNTY COMMISSIONERS JOURNAL OF PROCEEDINGS.

FILED FOR RECORD THIS 9th DAY OF April, 1975 A.D., AT 12:10 O'CLOCK P.M. AND RECORDED IN VOLUME 12 OF PLATS ON PAGE 37 OF RECORDS IN JACKSON COUNTY.

Harry Chipman
COUNTY CLERK

Lorene H. McCormack
COUNTY CLERK

Harry Chipman
COUNTY CLERK

Lorene H. McCormack
COUNTY CLERK

5980

STATE OF OREGON S.S.
COUNTY OF JACKSON S.S.

ENGINEER'S CERTIFICATE

I, PER E. ZIMMERLUND, A DULY REGISTERED ENGINEER IN THE STATE OF OREGON, BEING FIRST DULY SWORN DO HEREBY CERTIFY THAT I HAVE CORRECTLY SURVEYED AND MARKED WITH PROPER MONUMENTS AS PROVIDED BY LAW, THE TRACT OF LAND HEREON SHOWN AND THE SAID PLAT IS A CORRECT REPRESENTATION OF THE SAME AND THE FOLLOWING IS AN ACCURATE DESCRIPTION OF THE BOUNDARY LINES:

COMMENCING AT A BRASS CAP MONUMENTING THE 1/4 CORNER COMMON TO SECTIONS 15 & 16, T. 36 S., R. 4 W., W.M., JACKSON COUNTY, OREGON; THENCE SOUTH 561.98 FEET; THENCE WEST 1176.85 FEET TO A 2" X 36" IRON PIPE ON THE EASTERLY RIGHT OF WAY LINE OF WEST EVANS CREEK ROAD, MONUMENTING THE INITIAL POINT; THENCE SOUTH 83° 09' 17" EAST 419.82 FEET MORE OR LESS TO THE CENTERLINE OF EVANS CREEK; THENCE SOUTH 16° 00' WEST ALONG THE CENTERLINE OF EVANS CREEK 201.38 FEET; THENCE SOUTH 14° 00' EAST ALONG THE CENTERLINE OF EVANS CREEK 460.00 FEET; THENCE SOUTH 02° 00' EAST ALONG THE CENTERLINE OF EVANS CREEK 230.00 FEET; THENCE SOUTH 56° 00' WEST ALONG THE CENTERLINE OF EVANS CREEK 150.00 FEET; THENCE SOUTH 28° 00' WEST ALONG THE CENTERLINE OF EVANS CREEK 170.00 FEET; THENCE SOUTH 11° 41' 22" WEST ALONG THE CENTERLINE OF EVANS CREEK 182.66 FEET TO THE NORTHERLY RIGHT OF WAY LINE OF FOOTHILL BOULEVARD; THENCE NORTH 63° 42' 40" WEST ALONG THE NORTHERLY RIGHT OF WAY LINE OF FOOTHILL BOULEVARD 50.00 FEET MORE OR LESS TO A 5/8" DIAMETER IRON ROD; THENCE NORTH 71° 12' 42" WEST ALONG THE NORTHERLY RIGHT OF WAY LINE OF FOOTHILL BOULEVARD 513.14 FEET TO A 5/8" DIAMETER IRON ROD ON THE EASTERLY RIGHT OF WAY LINE OF WEST EVANS CREEK ROAD; THENCE NORTH 14° 15' 53" EAST ALONG THE EASTERLY RIGHT OF WAY LINE OF WEST EVANS CREEK ROAD 1181.69 FEET TO THE INITIAL POINT.

E. Zimmerlund
ENGINEER

SUBSCRIBED AND SWORN TO BEFORE ME THIS 18th DAY OF March, 1975 A.D.
MY COMMISSION EXPIRES ON THE 18th DAY OF May, 1976 A.D.

Dorothy F. McQuat
NOTARY PUBLIC OF OREGON

Dorothy F. McQuat
DOROTHY F. McQUAT
NOTARY PUBLIC - OREGON
My Commission Expires May 18, 1976

I DO HEREBY CERTIFY THAT THIS IS AN EXACT COPY OF THE ORIGINAL PLAT OF "WOODVILLE PARK SUBDIVISION"

E. Zimmerlund
ENGINEER

