

COUNTRY CLUB MEADOWS UNIT NO. 3-EXTENSION
 LOCATED IN THE SE 1/4 SECTION 29 TOWNSHIP 37 SOUTH
 RANGE 1 WEST, W.M. JACKSON COUNTY, OREGON

DEDICATION

KNOW ALL MEN BY THESE PRESENTS That we, B-Developers Inc. an Oregon Corporation, C.W. Brooks, Jewel Brooks, Robert A. Boyer and Marjorie A. Boyer, are the owners in fee simple of the lands hereon described and that we have subdivided the same into lots, blocks and streets as shown hereon, and the number and size of the lots and the length of all lines are plainly set forth and that this plat is a correct representation of the said subdivision, and we do hereby dedicate to the public for public use all streets hereon together with all easements as shown hereon and we do hereby designate said subdivision as COUNTRY CLUB MEADOWS UNIT NO. 3-EXTENSION

IN WITNESS WHEREOF, we have set our hands and seals this 25 day of March 1974.

B-Developers Inc.:

C.W. Brooks
President

Robert A. Boyer
Secretary

C.W. Brooks
C.W. Brooks

Jewel Brooks
Jewel Brooks

Robert A. Boyer
Robert A. Boyer

Marjorie A. Boyer
Marjorie A. Boyer

STATE OF OREGON } 55
 County of Jackson }

March 25 A.D. 1974

Personally appeared the above named Charles W. Brooks, President and Robert A. Boyer, Secretary of B-Developers Inc., an Oregon Corporation, C.W. Brooks, Jewel Brooks, Robert A. Boyer and Marjorie A. Boyer and acknowledged the foregoing instrument to be their voluntary act and deed.

Before me:

Gaylene Reader
Notary Public for Oregon

My Commission expires the 16 day of September 1976.

I certify that pursuant to authority granted to us by the Medford Planning Commission in open meeting of April 11 1974 the above plat is hereby approved by the Medford Planning Commission. Dated this 11th day of April 1974.

Robert Johnson
President

David A. Bossert
Secretary

Examined and approved this 2 day of April 1974.

John E. Jensen
City Engineer

Examined and approved this 13th day of MAY 1974.

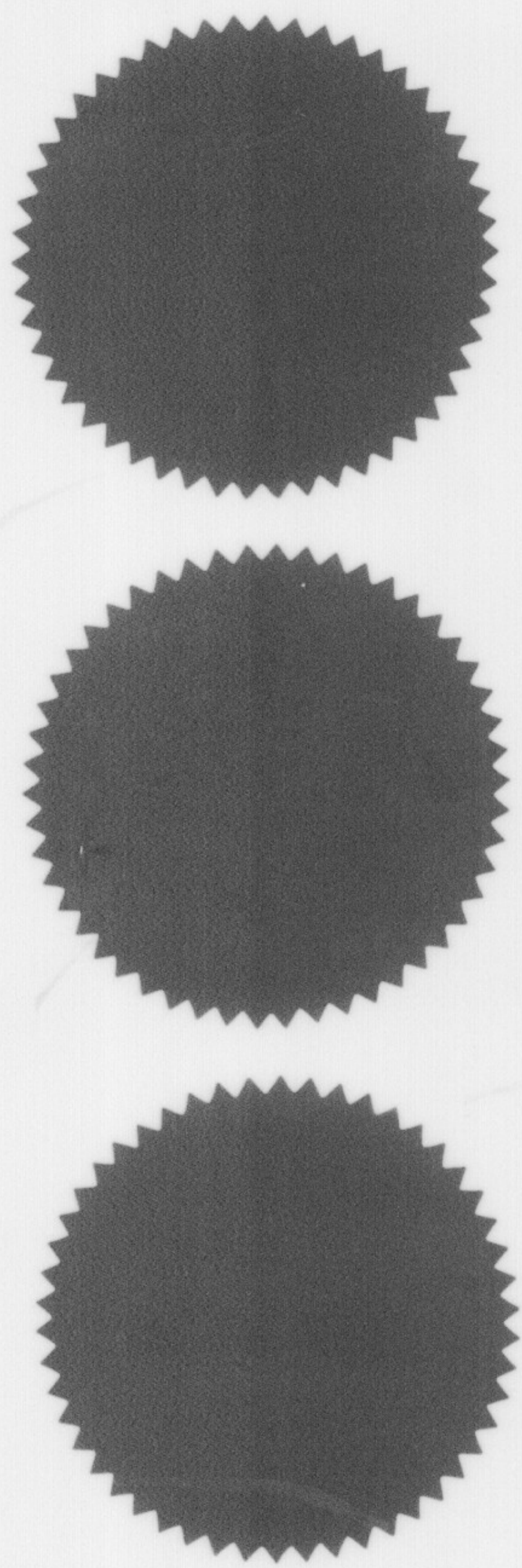
Ray E. Stewart
County Assessor

All taxes paid in full to date this the 13 day of May 1974.

Olson and Fiedler
County Sheriff

Filed for record this the 16th day of May 1974 at 10:48 O'Clock A.M. and recorded in Volume 12 of Plats at Page 24 of Records of Jackson County, Oregon.

Harold Thompson
County Clerk



ENGINEER'S CERTIFICATE

I, Torleiv Flatebo, a duly registered engineer of the State of Oregon, being first duly sworn, do hereby certify that I have correctly surveyed and marked with proper monuments as provided by law, the tract of land hereon shown and the said plat is a correct representation of the same and the following is an accurate description of the boundary lines:

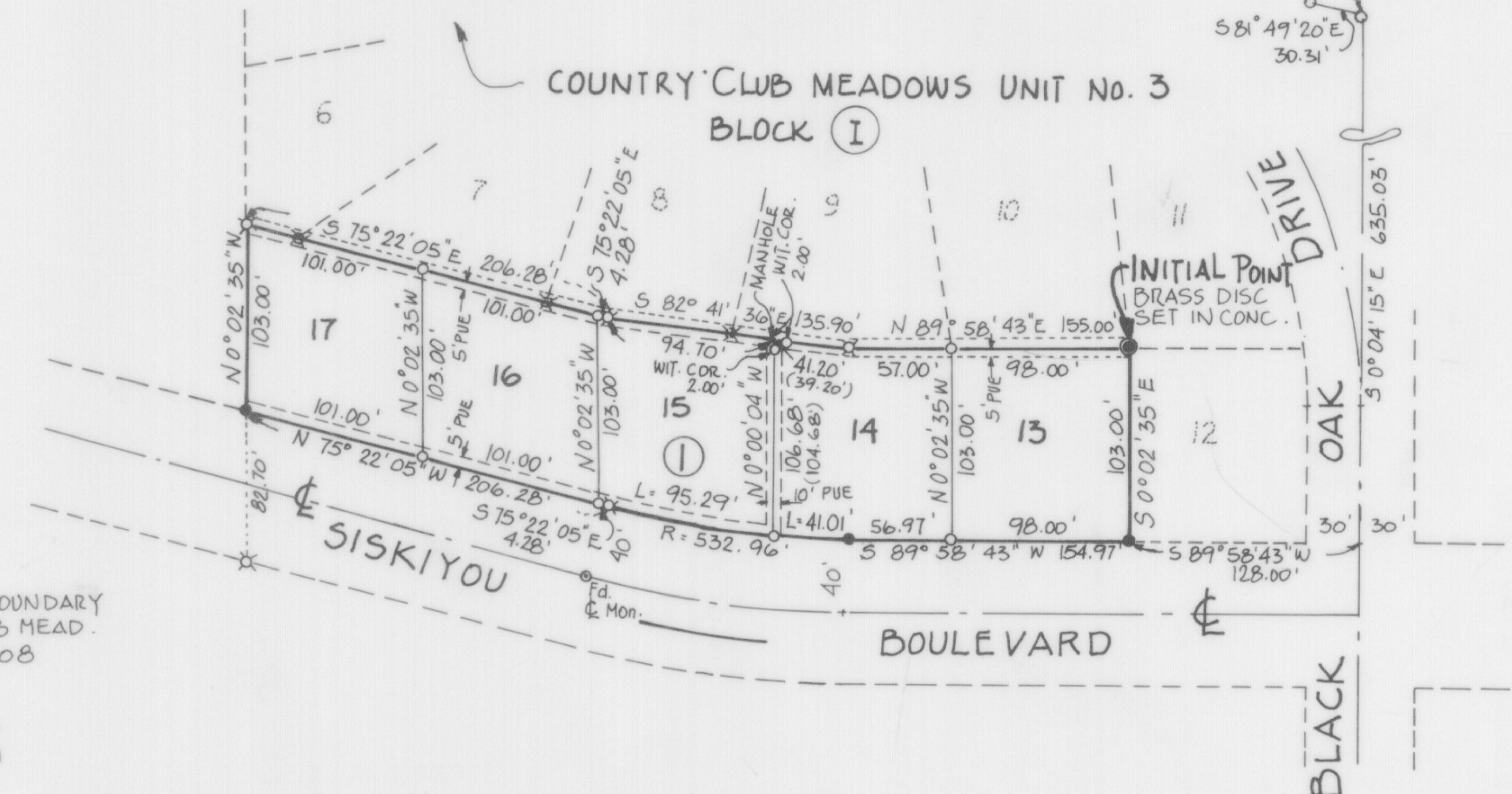
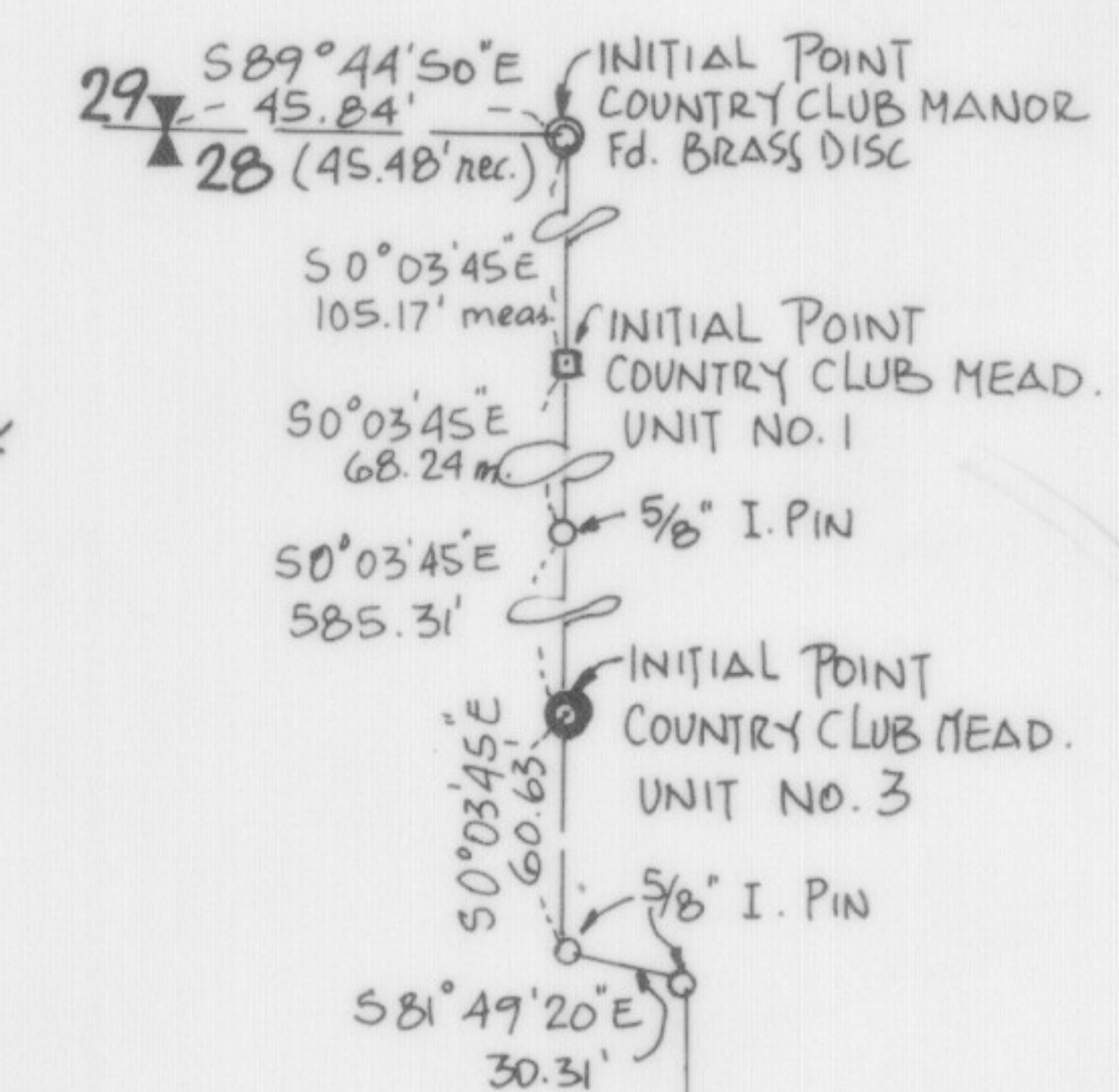
Commencing at the 1/4 Corner between 28 and 29, Township 37 South, Range 1 West of the Willamette Meridian, Jackson County Oregon, thence South 89°44'50" East 45.84 feet (rec. 45.48 feet) to a brass disc, said brass disc being the Initial Point of Country Club Manor Subdivision (rec.); thence South 0°03'45" East 105.17 feet (rec. 105.23 feet) to a brass disc set in concrete, said brass disc being the Initial Point of Country Club Meadows Subdivision Unit No. 1 (rec.); thence continue South 0°03'45" East 68.24 feet (rec. 68.26 feet); thence continue South 0°03'45" East 585.31 feet to a brass disc set in concrete, said brass disc being the Initial Point of Country Club Meadows Subdivision Unit No. 3; thence South 0°03'45" East 60.63 feet; thence South 81°49'20" East 30.31 feet; thence South 0°04'15" East 635.03 feet; thence South 89°58'43" West 128.00 feet; thence North 0°02'35" West 103.00 feet to a brass disc set in concrete, said brass disc being the Initial Point and the true point of beginning of Country Club Meadows Unit No. 3-Extension; thence South 0°02'35" East along the westerly line of Lot 12 Country Club Meadows Subdivision Unit No. 3, 103.00 feet to the northerly right-of-way line of Siskiyou Boulevard; thence along said right-of-way line South 89°58'43" West 134.97 feet; thence along the arc of a 532.96 foot radius curve to the right 136.30 feet (the long chord of which bears North 82°41'41" West 135.93 feet); thence North 75°22'05" West 206.28 feet; thence leaving said right-of-way line North 0°02'35" West 103.00 feet to the South most Westerly corner of Country Club Meadows Subdivision Unit No. 3; thence South 75°22'05" East along the southerly boundary line of said Subdivision 206.28 feet; thence South 82°41'36" East 135.90 feet; thence North 89°58'43" East 155.00 feet to the True Point of Beginning.

Torleiv Flatebo
Engineer

Subscribed and sworn to before me this 25 day of March 1974.

Gaylene Reader
Notary Public for Oregon

My Commission expires the 16 day of September 1976.



SCALE: 1" = 100'
 BASIS OF BEARING:
 THE WEST AND SOUTH BOUNDARY
 LINE OF COUNTRY CLUB MEAD.
 UNIT NO. 3 & R.S. 1208
 X^o 5/8" IRON PIN
 • SET 5/8" x 30" IRON PIN
 o SET 5/8" x 24" IRON PIN