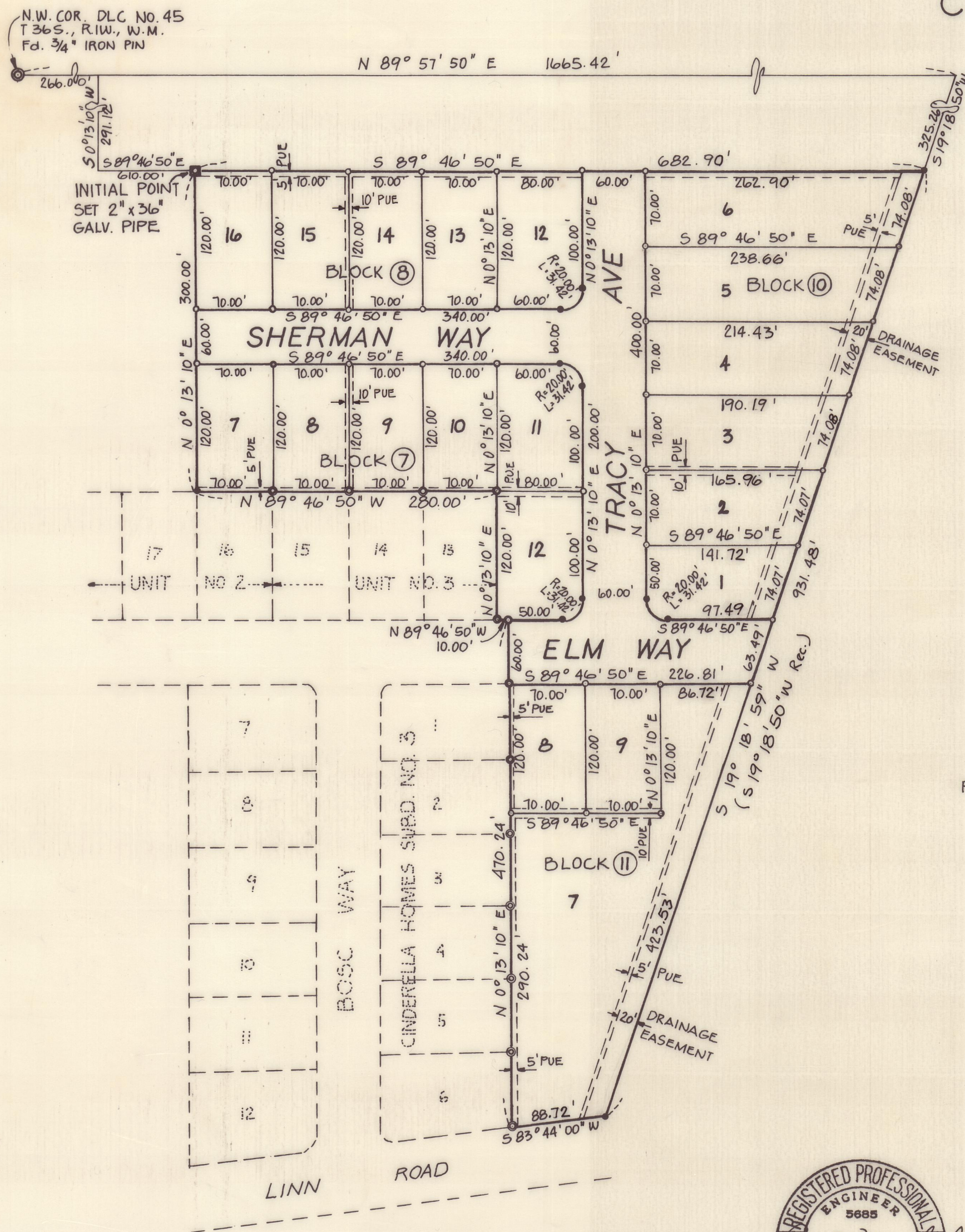


CINDERELLA HOMES SUBDIVISION UNIT NO. 4
 LOCATED WITHIN DLC NO. 45, SEC. 3 T. 36 S., R. 1 W., WM, JACKSON COUNTY, OREGON
 CITY OF EAGLE POINT



SCALE: 1" = 100'
 BEARINGS BASED ON CINDERELLA HOMES SUBD. UNIT NO. 3

- SET 5/8" x 30" ST. PIN
- SET 5/8" x 24" ST. PIN
- Fd. 5/8" ST. PIN

P.U.E. = PUBLIC UTILITY EASEMENT FOR POWER, GAS, TELEPHONE.



I hereby certify that this is an exact copy of the original plat.

Per E. Zimmerlund
 Per E. Zimmerlund
 Engineer

DEDICATION

KNOW ALL MEN BY THESE PRESENTS, That we Edward F. Hill and Opal V. Hill, are the owners in fee simple of the lands hereon described, and that we have subdivided the same into lots, blocks and streets as shown hereon and that the number and size of the lots and lengths of all lines are plainly set forth and that this plat is a correct representation of the said subdivision and we do hereby dedicate to the public for public use all streets hereon together with all easements as shown hereon and we do hereby designate said subdivision as:

CINDERELLA HOMES Subdivision UNIT NO. 4.

IN WITNESS WHEREOF we have set our hands and seals this 7 day of February 1973

STATE OF OREGON } s.s.
 County of Jackson }
Edward F. Hill Opal V. Hill
 Edward F. Hill Opal V. Hill

February 7 A.D. 1973
 Personally appeared the above named Edward F. Hill and Opal V. Hill and acknowledged the foregoing instrument to be their voluntary act and deed.

Before me: Juanita S. Lasswell
 Notary Public for Oregon

My Commission expires the 19 day of March 1976

Examined and approved by the Little Butte Irrigation Company District in regular session this day of 197

Attest: _____
 President Secretary

I certify that, pursuant to authority granted to me by the Eagle Point Planning Commission in open meeting of May 1 1973 this plat is hereby approved by the Eagle Point Planning Commission. Dated this 1 day of May 1973

Attest: Lucie Affetter Ludwick L. Baird
 President Secretary

Examined and approved this 12th day of SEPTEMBER 1973

All taxes paid in full to date this 18th day of Sept 1973

Examined and recommended for approval by the Board of County Commissioners this 27 day of Sept 1973

For order of the Board of County Commissioners approving this plat see Volume Page of the County Commissioners Journal of Proceedings

Filed for record this 27th day of September 1973, at 8:30 o'clock A.M. & recorded in Volume 12 of Plats at Page 15 of Records of Jackson County, Oregon

ENGINEER'S CERTIFICATE

STATE OF OREGON } s.s.
 County of Jackson }

I, Per E. Zimmerlund, a duly registered Engineer in the State of Oregon, being first duly sworn, do hereby certify that I have correctly surveyed and marked with proper monuments as provided by law the tract of land hereon shown and the said plat is a correct representation of the same and the following is an accurate description of the boundary lines:

Commencing at the North West corner of Donation Land Claim No. 45 in Section 3, Township 36 South, Range 1 West, Willamette Meridian, Jackson County Oregon; thence along the Northline of said Donation Land Claim North 89° 57' 50" East 266.00 feet; thence South 0° 13' 10" West 291.12 feet; thence South 89° 46' 50" East 610.00 feet to the INITIAL POINT and the TRUE POINT OF BEGINNING; thence continue South 89° 46' 50" East 682.90 feet; thence South 19° 13' 59" West 931.48 feet; thence South 83° 44' 00" West 88.72 feet; thence North 0° 13' 10" East 470.24 feet; thence North 89° 46' 50" West 10.00 feet; thence North 0° 13' 10" East 120.00 feet; thence North 89° 46' 50" West 280.00 feet; thence North 0° 13' 10" East 300.00 feet to the INITIAL POINT OF BEGINNING.

Subscribed and sworn to before me this 25 day of January 1973
 My Commission expires the 18 day of May 1976

Per E. Zimmerlund
 Engineer

Sarah J. McOat
 Notary Public for Oregon