

# OPALINA VILLAGE UNIT NO. 1

Located in the NE 1/4, Sec. 21, T. 36 S. R. 1 W., W.M.

And in lots 173 & 174 Roguelands Irrigated Orchard Tracts (Recorded)

Jackson County, Oregon

## DEDICATION

KNOW ALL MEN BY THESE PRESENTS, That we Melvin F. Hoover, Claud W. Hoover, Elsie Hoover by Melvin F. Hoover as Power of Attorney and Terry D. Green are the owners in fee simple of the lands hereon described and that we have subdivided same into lots as shown hereon, and the number and size of the lots and lengths of all lines are plainly set forth, and that this plat is a correct representation of the said subdivision, and we do hereby dedicate to the White City Sanitary District those sewer easements as shown hereon, and we do hereby designate said subdivision as, OPALINA VILLAGE UNIT NO. 1.

IN WITNESS WHERE OF, we have hereunto set our hands and seals this 9<sup>th</sup> day of February, 1973

Melvin F. Hoover  
Melvin F. Hoover

Elsie Hoover by Melvin F. Hoover  
Elsie Hoover by Melvin F. Hoover as Power of Attorney

Claud W. Hoover  
Claud W. Hoover

Terry D. Green  
Terry D. Green

STATE OF OREGON }  
County of Jackson }  
February 9<sup>th</sup> A.D. 1973

Personally appeared the above-named Melvin F. Hoover, Claud W. Hoover, Elsie Hoover by Melvin F. Hoover as Power of Attorney and Terry D. Green, and acknowledged the foregoing in to be their voluntary act and deed. Before me:

Robert Scoring  
Notary Public for Oregon

My commission expires the 26<sup>th</sup> day of July, 1975

Examined and approved by the Rogue River Valley Irrigation District in regular session this the 7<sup>th</sup> day of February, 1973.

J. P. Pickett  
Secretary

Ute Bohmert  
President

Examined and approved for the use of individual wells and community sewage facilities this the 27<sup>th</sup> day of Feb., 1973.

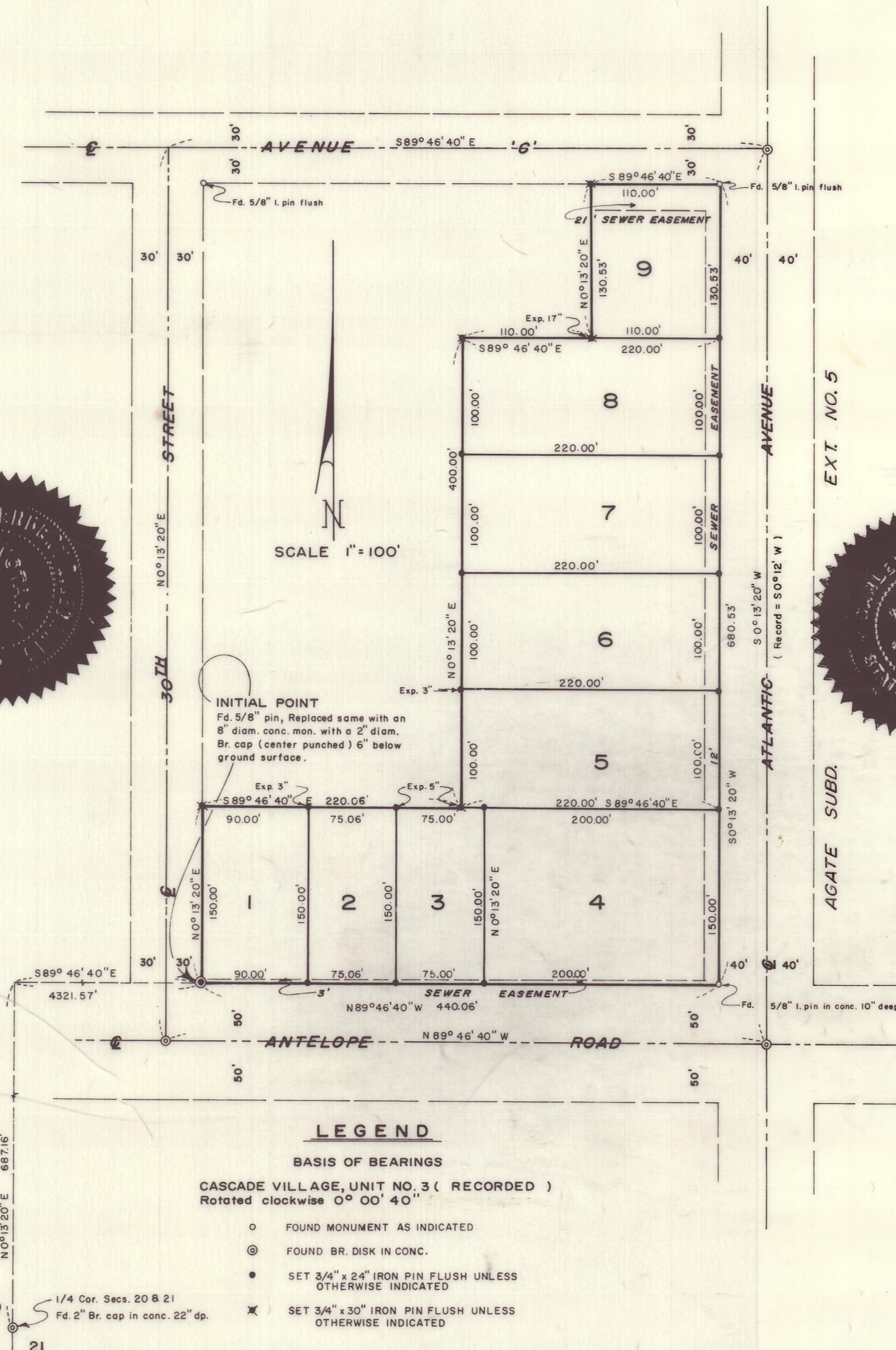
Walter Steinhilber  
County Health Officer

Examined and approved this 27<sup>th</sup> day of MARCH, 1973.

Ray E. Stewart by Paul H. Hill  
County Assessor

All taxes paid in full to date this the 27 day of April, 1973.

Clarence Leigh  
County Sheriff



1/4 Cor. Secs. 20 & 21  
Fd. 2\" Br. cap in conc. 22\" dp.  
20  
21

I hereby certify that this tracing is a photocopy of the original plat.

Mark E. Boyden  
Surveyor

## SURVEYOR'S CERTIFICATE

STATE OF OREGON }  
County of Jackson } SS

I, Mark E. Boyden, a duly registered surveyor of the State of Oregon, being first duly sworn, do hereby certify that under my direction, the tract of land here on shown has been correctly surveyed and marked with proper monuments, and the said plat is a correct representation of the same, and the following is an accurate description of the boundary lines: Commencing at the Quarter corner common to Sections 20 and 21, Township 36 South, Range 1 West of the Willamette Meridian in Jackson County, Oregon; thence North 0° 13' 20\" East, 687.16 feet to the North boundary of Antelope ( County ) Road; thence South 89° 46' 40\" East along the North boundary of said Road, 4321.57 feet to an intersection with the East boundary of Thirtieth Street for the initial point of beginning, said initial point being monumented with an 8\" diameter concrete monument with bronze disk, thence North 0° 13' 20\" East along the East boundary of Thirtieth Street, 150.00 feet; thence South 89° 46' 40\" East, 220.06 feet; thence North 0° 13' 20\" East, 400.00 feet; thence South 89° 46' 40\" East, 110.00 feet; thence North 0° 13' 20\" East, 130.53 feet to the South boundary of Avenue \" C\"; thence South 89° 46' 40\" East along the South boundary of Avenue \" C\", 110.00 feet to the West boundary of Atlantic Avenue; thence South 0° 13' 20\" West along the West boundary of Atlantic Avenue, 680.53 feet to the North boundary of Antelope Road; thence North 89° 46' 40\" West along the North boundary of Antelope Road, 440.06 feet to the initial point of beginning.

Mark E. Boyden  
Surveyor

Subscribed and sworn to before me this 28 day of February, 1973

Dorlene L. Neppage  
Notary Public for Oregon

My commission expires the 21 day of March, 1975.

Examined and approved by the Jackson County Planning Commission in regular session this the 4<sup>th</sup> day of April, 1973.

Laurene Seemin  
Secretary

CR Parkhurst  
President

Examined and recommended for approval by the Board of County Commissioners this 3 day of April, 1973.

Edward A. McIntyre  
County Surveyor

For order of the Board of County Commissioners approving this plat see Volume \_\_\_\_\_, page \_\_\_\_\_, of County Commissioners Journal of Proceedings.

Stan Simpson  
County Clerk

Filed for record this the 11<sup>th</sup> day of April, 1973, at 10:41 o'clock A.M. and recorded in Volume 12 of plats at page 3 of records of Jackson County, Oregon.

Stan Simpson  
County Clerk

REGISTERED  
PROFESSIONAL  
LAND SURVEYOR

Mark E. Boyden  
OREGON  
NOV 9 1951  
MARK E. BOYDEN  
281