

PACIFIC ESTATES - UNIT NO. I

N.E. 1/4 SEC. 26, T. 38 S., R. 1 W., W.M.
CITY OF TALENT
JACKSON COUNTY, OREGON

DEDICATION

KNOW ALL MEN BY THESE PRESENTS: that we, Duane M. Ross and Thelma J. Ross, husband and wife, are the owners in fee simple of the lands hereon described and that we have subdivided the same into lots, blocks and streets as shown hereon, and the number and the size of the lots and the lengths of all lines are plainly set forth and that this plat is a correct representation of the said subdivision and we do hereby dedicate to the public for public use all streets hereon with all easements and that this plat and the dedication hereof is subject to the condition that Talent Irrigation District's obligation to deliver water is limited to delivery at the point indicated on the plat and is further subject to the statutory powers, rules and regulations of Talent Irrigation District and we do hereby designate said subdivision as: PACIFIC ESTATES - UNIT NO. I.

IN WITNESS WHEREOF We have set our hand and seal this 9th day of January 1973.

Duane M. Ross
Duane M. Ross

Thelma J. Ross
Thelma J. Ross

STATE OF OREGON) SS
County of Jackson)
January 9 A.D. 1973

Personally appeared the above named Duane M. Ross and Thelma J. Ross and acknowledged the foregoing instrument to be their voluntary act and deed. Before me:

Una Drevenkracht
Notary Public for Oregon

My Commission expires the 27 day of April 1976.

Examined and approved by the City of Talent Planning Commission in open meeting this 9 day of January 1973.

Attest: Lewen Hood
Secretary

Richard J. Arnes
President

Examined and approved by the Talent Irrigation District in special session this 16th day of JANUARY 1973.

Attest: W.A. Hopkins
Secretary

Don Desmus
President

Examined and approved this 1st day of FEBRUARY 1973.

Ray E. Stewart by David J. Hill
County Assessor

All taxes paid in full to date this 1st day of Feb 1973.

De. General Knight
County Sheriff

Examined and recommended for approval by the Board of County Commissioners this 9th day of Feb 1973.

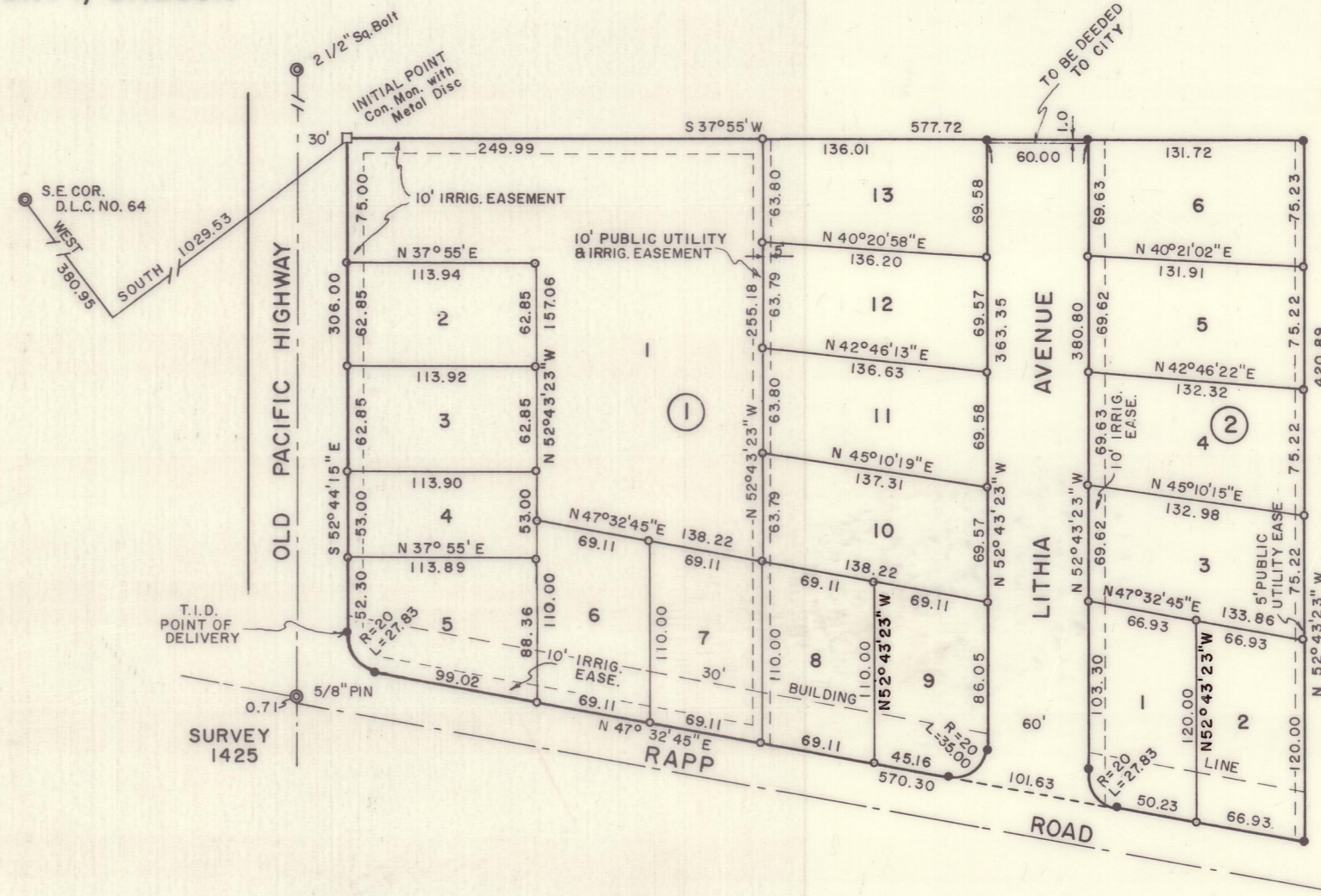
Edward A. M. Gutz
County Surveyor

For order of the Board of County Commissioners approving this plat see Volume _____ Page _____ of the County Commissioners Journal of Proceedings.

by _____ Deputy
Henry O. Johnson
County Clerk

Filed for record this the 14th day of February 1973, at 11:36 o'clock A.M. and recorded in Volume 11 of Plats at Page 60 of Records of Jackson County, Oregon.

by _____ Deputy
Henry O. Johnson
County Clerk



SURVEYOR'S CERTIFICATE

STATE OF OREGON) SS
County of Jackson)

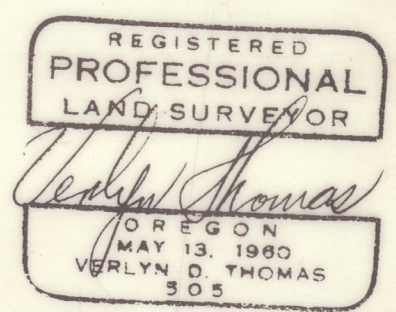
I, Verlyn Thomas, a duly registered surveyor of the State of Oregon, being first duly sworn, do hereby certify that I have correctly surveyed and marked with proper monuments, as provided by law the tract of land hereon shown, and the said plat is a correct representation of the same, and the following is an accurate description of the boundary lines: Beginning at a concrete monument with metal disc on the northeasterly boundary of Old Pacific Highway, from which the Southeast corner of Donation Land Claim No. 64, Township 38 South, Range 1 West, Willamette Meridian, bears South 1029.53 feet, and West, 380.95 feet; thence South 52° 44' 15" East, along said Highway boundary, 306.00 feet; thence along the arc of a 20.00 foot radius curve left, (the long chord bears North 87° 24' 15" East, 25.64 feet) 27.83 feet; thence North 47° 32' 45" East, 570.30 feet; thence North 52° 43' 23" West, 420.89 feet; thence South 37° 55' West, 577.72 feet to the Initial Point of Beginning.

Verlyn Thomas
Surveyor

Subscribed and sworn to before me this 9 day of January 1973

Una Drevenkracht
Notary Public for Oregon

My commission expires the 27 day of April 1976.



This is to certify that this tracing is an exact copy of the original plat.

Verlyn Thomas
Surveyor