

# ISABELLE SUBDIVISION

SITUATE IN THE N.W. 1/4 & S.W. 1/4 OF SECTION 25, T.38 S., R.1W., W.M., JACKSON COUNTY, ORE. AND IN THE CITY OF TALENT, JACKSON CO, ORE.

## DEDICATION

KNOW ALL MEN BY THESE PRESENTS: That we, David L. Jackson and Lani A. Jackson (husband and wife) are the owners in fee simple of the lands hereon described and that we have subdivided the same into lots, blocks and streets as shown hereon, and the number and the size of the lots and the lengths of all the lines are plainly set forth and that this plat is a correct representation of the said subdivision and we do hereby dedicate to the public for public use all streets hereon with all easements\* and we do hereby designate said subdivision as: ISABELLE SUBDIVISION.

IN WITNESS WHEREOF We have set our hand and seal this 5<sup>th</sup> day of September 1972

STATE OF OREGON }  
COUNTY OF JACKSON } SS

September 5 A.D. 1972

Personally appeared the above named David L. Jackson and Lani A. Jackson and acknowledged the foregoing instrument to be their voluntary act and deed.

Before me: Annabelle Harmon  
NOTARY PUBLIC FOR OREGON

My commission expires the 14<sup>th</sup> day of September 1972.

I certify that pursuant to authority granted to us by the City of Talent Planning Commission in open meeting on SEPTEMBER 7 1972 the above plat is hereby approved by the City of Talent Planning Commission. Dated this 7<sup>th</sup> day of SEPTEMBER 1972.

Attest: Gwen Hood SECRETARY  
Rob Miller PRESIDENT

Examined and approved by the Talent Irrigation District in regular session this 5<sup>th</sup> day of Sept. 1972.

Attest: W. H. Kozlowski SECRETARY  
Earl J. Johnson PRESIDENT

Examined and approved this 12<sup>th</sup> day of SEPTEMBER 1972.

Ray E. Stewart by David H. Hill  
COUNTY ASSESSOR DEPUTY

All taxes paid in full to date this 12<sup>th</sup> day of Sept. 1972.

Dr. Leonard Higgins  
COUNTY SHERIFF

Examined and recommended for approval by the County Court this 26<sup>th</sup> day of SEPT. 1972.

Mark E. Bourde  
COUNTY SURVEYOR

For order of the County Court approving this plat see Volume \_\_\_\_\_, Page \_\_\_\_\_ of the County Commissioners Journal of Proceedings.

Harry Chipman  
COUNTY CLERK  
By: Ruby A. Poling  
Deputy

Filed for record this the 4<sup>th</sup> day of October 1972, at 12:52 o'clock P.M. and recorded in Volume 11 of plats at page 55 of records of Jackson County, Oregon.

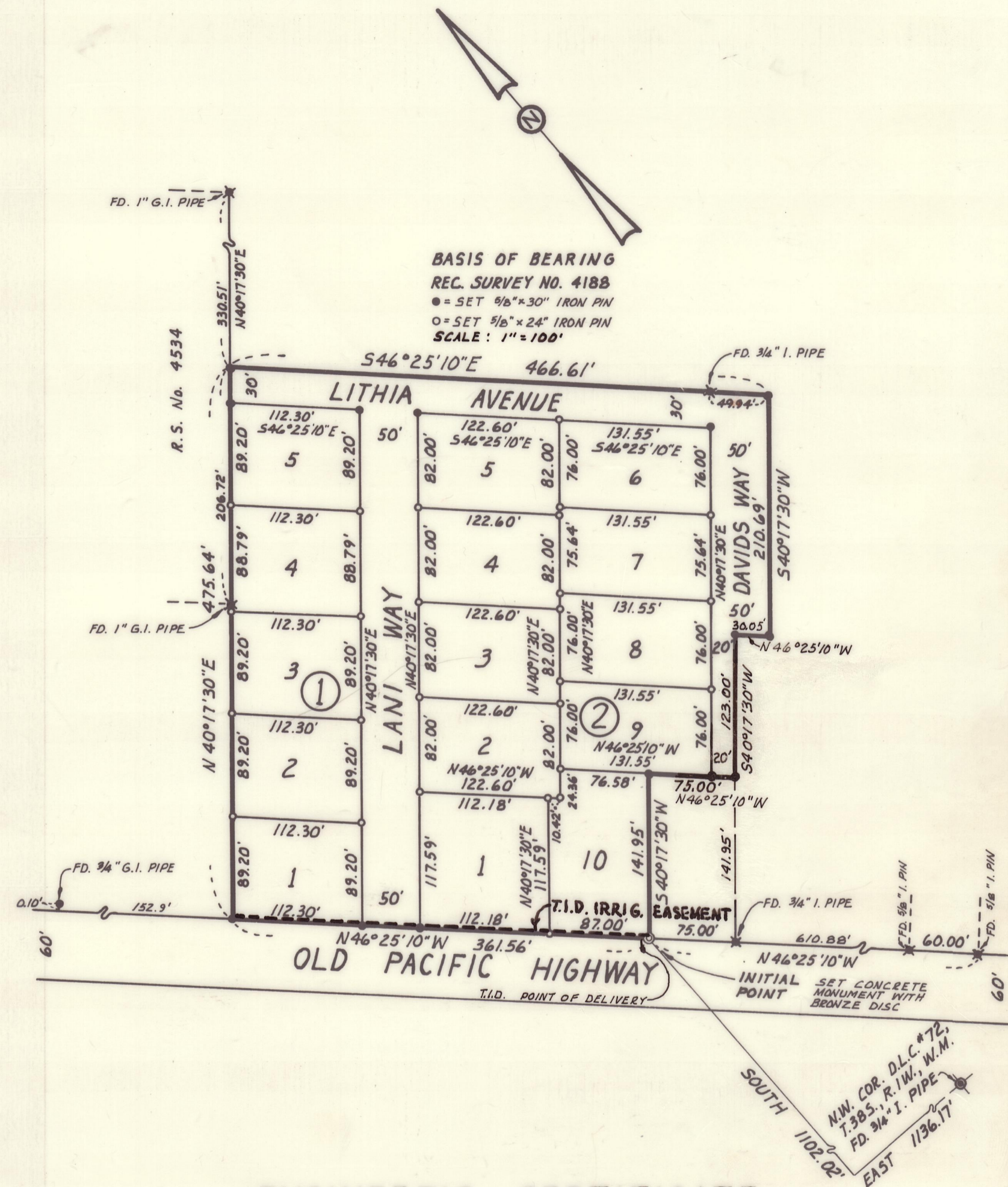
Harry Chipman  
COUNTY CLERK  
By: Ruby A. Poling

### \* FURTHER DEDICATION:

"This plat and the dedication hereof is subject to the condition that Talent Irrigation District's obligation to deliver water is limited to delivery at the point indicated on the plat and is further subject to the statutory powers, rules, and regulations of Talent Irrigation District."

I hereby certify that this tracing is an exact copy of the original plat filed with the County Clerk.

Elmer R. Savikko  
ENGINEER



## ENGINEER'S CERTIFICATE

I, Elmer R. Savikko, a duly registered Engineer of the State of Oregon, being first duly sworn, do hereby certify that I have correctly surveyed and marked with proper monuments as provided by law, the tract of land hereon shown and the said plat is a correct representation of the same and the following is an accurate description of the boundary lines:

Commencing at a concrete monument with a bronze disc set 6" below the surface of the ground for the Initial Point of Beginning on the Northeastly right of way line of the Old Pacific Highway, from which the Northwest Corner of Donation Land Claim No. 72, Township 38 South, Range 1 West, Willamette Meridian, Jackson County, Oregon, bears South 1102.02 feet and East 1136.17 feet; thence along the aforementioned Northeastly right of way line, North 46°25'10" West 361.56 feet to a 5/8 inch iron pin; thence North 40°17'30" East 475.64 feet to a 5/8 inch iron pin; thence South 46°25'10" East 466.61 feet to a 5/8 inch iron pin; thence South 40°17'30" West 210.69 feet to a 5/8 inch iron pin; thence North 46°25'10" West 30.05 feet to a 5/8 inch iron pin; thence South 40°17'30" West 123.00 feet to a 5/8 inch iron pin; thence North 46°25'10" West 75.00 feet to a 5/8 inch iron pin; thence South 40°17'30" West 141.95 feet to the Initial Point of Beginning.

Subscribed and sworn to before me this 5<sup>th</sup> day of September 1972

My commission expires the 14<sup>th</sup> day of September 1972.

Elmer R. Savikko  
ENGINEER

Annabelle Harmon  
NOTARY PUBLIC FOR OREGON