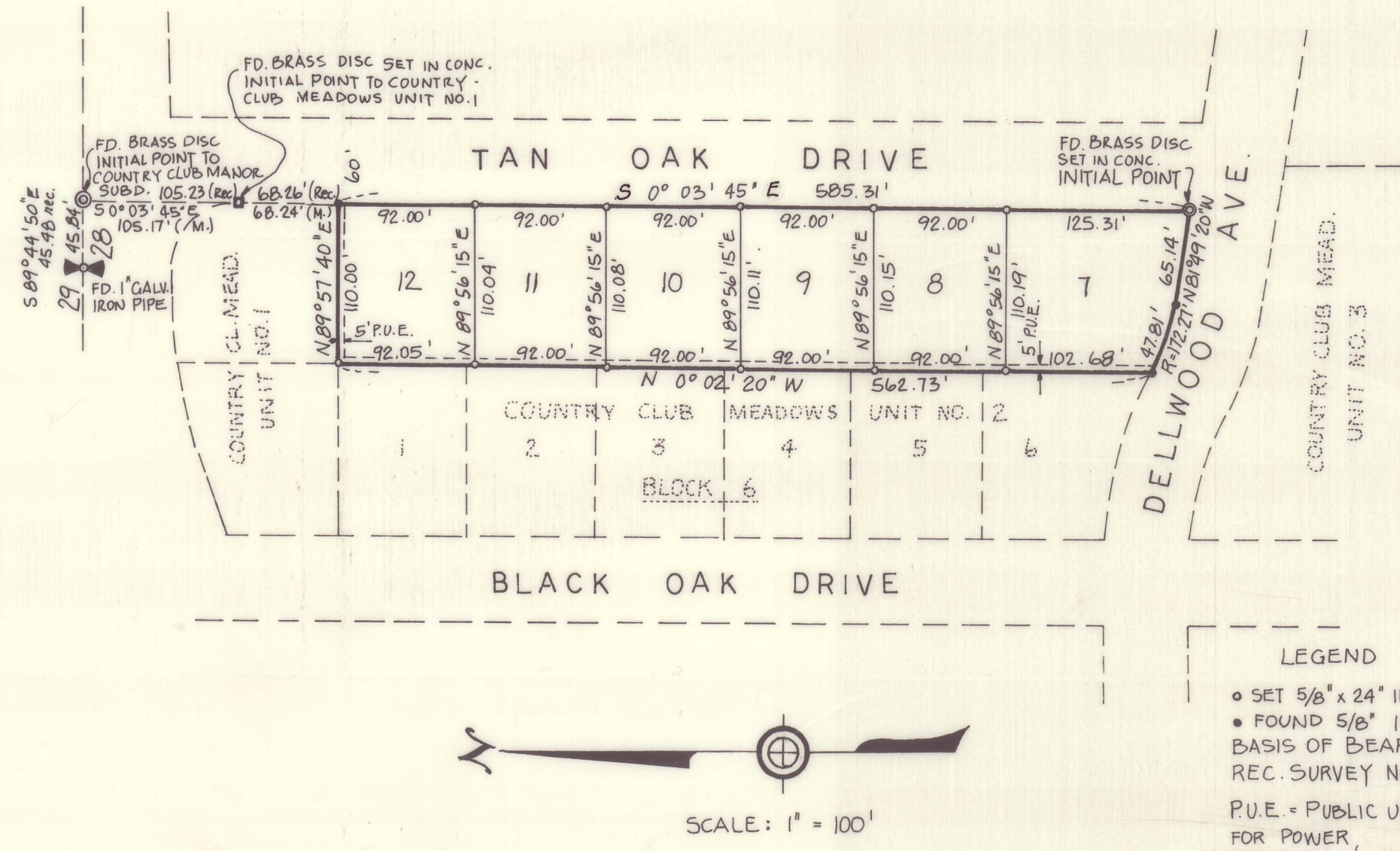


COUNTRY CLUB MEADOWS UNIT NO. 2 - EXTENSION
 LOCATED IN THE S.E. 1/4 SECTION 29 T. 37 S. R. 1 W. WILLAMETTE M.
 JACKSON COUNTY OREGON
 JULY 1972



ENGINEER'S CERTIFICATE

I, Per E. Zimmerlund, a duly registered engineer of the State of Oregon, being first duly sworn, do hereby certify that I have correctly surveyed and marked with the proper monuments as provided by law, the tract of land hereon shown and the said plat is a correct representation of the same and the following is an accurate description of the boundary lines.

Commencing at a brass disc set in concrete and Initial Point of Beginning, said brass disc also being the initial point of Country Club Meadows Unit No. 3, said brass disc bears South 89°44'50" East 45.84 feet (record 45.48 feet) and South 0°03'45" East 758.72 feet (record 758.80 feet) from the Quarter Corner of Sections 28 and 29, T. 37 S. R. 1 W. W.M., Jackson County, Oregon, thence North 81°49'20" West 65.14 feet; thence along the arc of a 172.27 foot radius curve to the right 47.81 feet (the longchord of which bears North 73°52'20" West 47.66 feet), thence North 0°02'20" West 562.73 feet along the easterly boundary line of Block 6 of Country Club Meadows Unit 2, thence North 89°57'40" East 110.00 feet along the southerly boundary of lot 2, Block 4 of Country Club Meadows Unit No. 1; thence South 10°03'45" East 585.31 feet to the Initial Point of Beginning.

Per E. Zimmerlund
 Engineer

Subscribed and sworn to before me this 24 day of July 1972

Sarah J. M'Quat
 Notary Public for Oregon

My Commission expires the 18 day of May 1976



DEDICATION

KNOW ALL MEN BY THESE PRESENTS that we B-Developers Inc., an Oregon Corporation, C.W. Brooks, Jewel Brooks, Robert A. Boyer and Marjorie A. Boyer, are the owners in fee simple of the lands hereon described and that we have subdivided the same into lots, and streets as shown hereon, and the number and size of the lots and the length of all lines are plainly set forth and that this plat is a correct representation of the said subdivision, and we do hereby dedicate to the public for public use all streets hereon together with all easements as shown hereon and we do hereby designate said subdivision as: COUNTRY CLUB MEADOWS UNIT NO. 2 - EXTENSION subdivision.

B-DEVELOPERS INC.

<i>C.W. Brooks</i> President	<i>Robert A. Boyer</i> Secretary
<i>C.W. Brooks</i> C.W. Brooks	<i>Jewel Brooks</i> Jewel Brooks
<i>Robert A. Boyer</i> Robert A. Boyer	<i>Marjorie A. Boyer</i> Marjorie A. Boyer

STATE OF OREGON }
 County of Jackson } S.S.

July 27 A.D. 1972

Personally appeared the above named Charles W. Brooks, President and Robert A. Boyer, Secretary of B-Developers Inc., an Oregon Corporation, C.W. Brooks, Jewel Brooks, Robert A. Boyer and Marjorie A. Boyer, and acknowledged the foregoing instrument to be their voluntary act and deed.

Before me: *Gaylene Reader* My Commission expires the 16th day of September 1972
 Notary Public for Oregon

I certify that pursuant to authority granted to us by the City of Medford Planning Commission in open meeting of August 10 1972 the above plat is hereby approved by the City of Medford Planning Commission.
 Dated this 10th day of August 1972

<i>Charles F. Shinn</i> President	<i>Richard Steven</i> Secretary
--------------------------------------	------------------------------------

Examined and approved this 14 day of August 1972

Diane J. Croppin
 City Engineer

Examined and approved this 7th day of SEPT 1972

Ray E. Stewart by David M. Hill
 County Assessor DEPUTY

All taxes paid in full to date this 7 day of Sept. 1972

Clarence H. King
 County Sheriff

Filed for record this the 8th day of September 1972, at 9:25 o'clock A. and recorded in Volume 11 of plats at page 49 of Records of Jackson County, Oregon.

Blaine C. Simpson
 County Clerk