

D'ANJOU VILLAGE UNIT NO. 4
 LOCATED IN D.L.C. NO. 43 T.37 S., R.1W., W.M., JACKSON
 COUNTY, OREGON

OCTOBER 1971

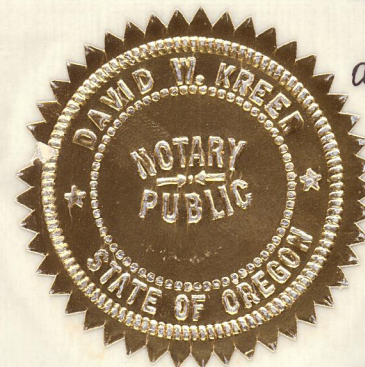
ENGINEER'S CERTIFICATE

DEDICATION

I, Per E. Zimmerlund, a duly registered Engineer of the State of Oregon, being first duly sworn, do hereby certify that I have correctly surveyed and marked with proper monuments as provided by law, the tract of land hereon shown and the said plat is a correct representation of the same and the following is an accurate description of the boundary lines:

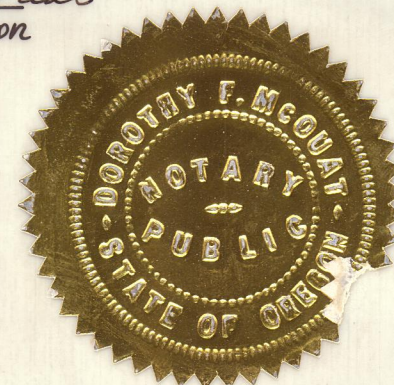
Commencing at a 3" Iron Pipe with a 3/4" Bronze Cap and Initial Point of Beginning, said pipe also being the initial point of D'Anjou Village Unit No. 1, which pipe bears South 89° 57' 00" West, 1385.26 feet and South 20.00 feet from the N.E. Corner of D.L.C. No. 43, T. 37 S., R. 1W., W.M.; thence South 0° 16' 20" West along the Eastline of Unit 1, 2 and 3 of said D'Anjou Village, 621.52 feet; thence North 89° 57' 00" East, 380.00 feet; thence North 47° 14' 40" East, 450.96 feet; thence North 0° 12' 00" East, 316.00 feet to the South Line of Garfield Road; thence South 89° 57' 00" West along said South Line, 708.98 feet to the Initial Point of Beginning.

Per E. Zimmerlund
 Engineer

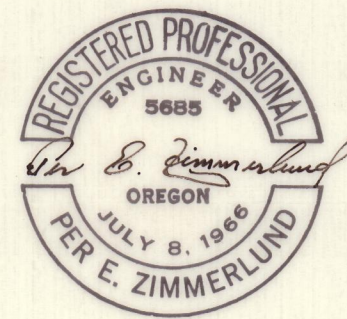


Subscribed and sworn to before me this 11th day of February 1972

Deborah J. McQuat
 Notary Public for Oregon



My commission expires the 18 day of May 1972



KNOW ALL MEN BY THESE PRESENTS, that we, Douglas L. Pickell and Ruth A. Pickell are the owners in fee simple of the lands hereon described and that we have subdivided the same into lots, blocks and streets as shown hereon and the number and size of the lots and blocks and the lengths of all lines are plainly set forth and that this plat is a correct representation of the said subdivision and we do hereby dedicate to the public for public use all streets hereon together with all easements as shown hereon and we do hereby designate said subdivision as: D'ANJOU VILLAGE NO. 4

IN WITNESS WHEREOF we have set our hands and seals this 15th day of February 1972

Douglas L. Pickell
 Douglas L. Pickell

Ruth A. Pickell
 Ruth A. Pickell

STATE OF OREGON }
 County of Jackson } SS.

February 15 A.D. 1972

Personally appeared the above named Douglas L. Pickell and Ruth A. Pickell and acknowledged the foregoing instrument to be their voluntary act and deed.
 Before me:

David W. Kneer
 Notary Public for Oregon

My Commission expires the 19 day of Sept. 1975

Examined and approved by the Medford Irrigation District in regular session this the 15 day of March 1972.

Robert M. James
 Secretary

Albert H. Hennes
 President

I certify that pursuant to authority granted to us by the Medford Planning Commission in open meeting at June 22 1972 the above plat is hereby approved by the Medford Planning Commission.

Dated this 22nd day of June 1972

Attest:

Richard Stevan
 Secretary

Charles J. Quinn
 President

Examined and approved this 8 day of May 1972

James J. Scroggin
 City Engineer

Examined and approved this 26th day of June 1972

Ray E. Stewart
 County Assessor

All taxes paid in full to date this 26th day of June 1972

Almond High
 County Sheriff

For order of the County Court approving this plat see Volume Page of County Commissioners' Journal of Proceedings.

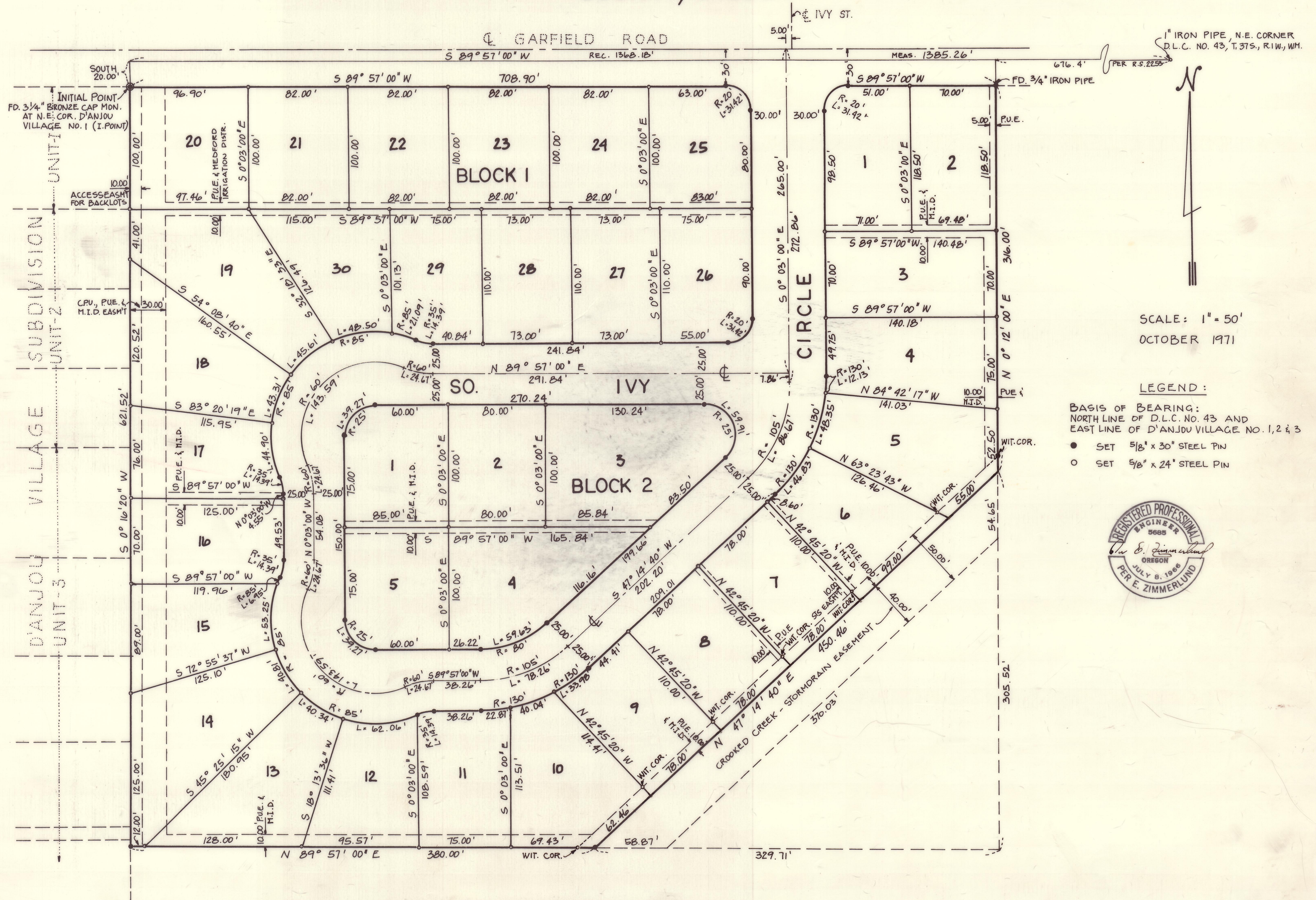
Harry Chipman
 County Clerk

Filed for record this the 19th day of July 1972 at o'clock 12:36 P.M. and recorded in Volume 11 of Plats at Page 46 of Records of Jackson County, Oregon

Harry Chipman
 County Clerk
 By: Ruby A. Poling
 Deputy

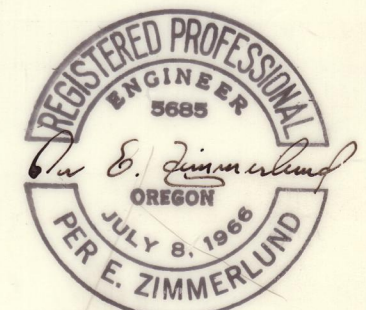
D'ANJOU VILLAGE UNIT NO. 4

LOCATED IN D.L.C. NO. 43, T.37S., R.1W., WM. JACKSON-COUNTY, OREGON



SCALE: 1" = 50'
OCTOBER 1971

- LEGEND:**
- BASIS OF BEARING:
NORTH LINE OF D.L.C. NO. 43 AND
EAST LINE OF D'ANJOU VILLAGE NO. 1, 2 & 3
- SET 5/8" x 30" STEEL PIN
 - SET 5/8" x 24" STEEL PIN



7R/64