

CINDERELLA HOMES SUBDIVISION UNIT NO 3

LOCATED IN D.L.C. NO. 45 SEC. 3, T.36 S., R.1 W., W.M., JACKSON COUNTY, OREGON
CITY OF EAGLE POINT

JUNE 1970
SCALE 1"=100'

RECEIVED-FILED

1970 DEC 16 PM 1 53

HARRY SWIPMAN
JACKSON COUNTY CLERK
DOCKETED BY _____

DEDICATION

KNOW ALL MEN BY THESE PRESENTS, That we Edward F. Hill and Opal W. Hill, are the owners in fee simple of the lands hereon described, and that we have subdivided the same into lots, blocks and streets as shown hereon, and the number and size of the lots and lengths of all lines are plainly set forth, and that this plat is a correct copy of the said subdivision, and we do hereby dedicate to the public for public use all streets and utility easements shown hereon, and we do hereby designate said subdivision as: CINDERELLA HOMES subdivision UNIT NO 3.

IN WITNESS WHEREOF we have hereunto set our hands and seals this 15 day of June, 1970

Edward F. Hill
Edward F. Hill

Opal W. Hill
Opal W. Hill

STATE OF OREGON } s.s.
County of Jackson }

15 June A.D. 1970

Personally appeared the above named Edward F. Hill and Opal W. Hill and acknowledged the foregoing instrument to be their voluntary act and deed.

Before me:

Juanita L. Lassell
Notary Public for Oregon



My commission expires the 19 day of March, 1972

I certify that, pursuant to authority granted to me by the Eagle Point Planning Commission in open meeting of April 21, 1970, this plat is hereby approved by the Eagle Point Planning Commission.

Dated this 23 day of June, 1970.

Attest: Ray C. Stewart
President

Ujainor Corepell
Secretary

Examined and approved by the Little Butte Migration Company in regular session this 3 day of August, 1970

Attest: Lewis Conger
President

Mary Isabel Huffman
Secretary

Examined and approved this 10 day of December, 1970

Ray C. Stewart
County Assessor

All taxes paid in full to date this 10 day of Dec., 1970

Os Leonard Leigh
County Sheriff

Examined and recommended for approval by the County Court this the 15 day of December, 1970

Neil E. Boyle
County Surveyor

For order of the County Court approving this plat see Volume _____ page _____ of County Commissioners' Journal of Proceedings.

By: _____
Deputy

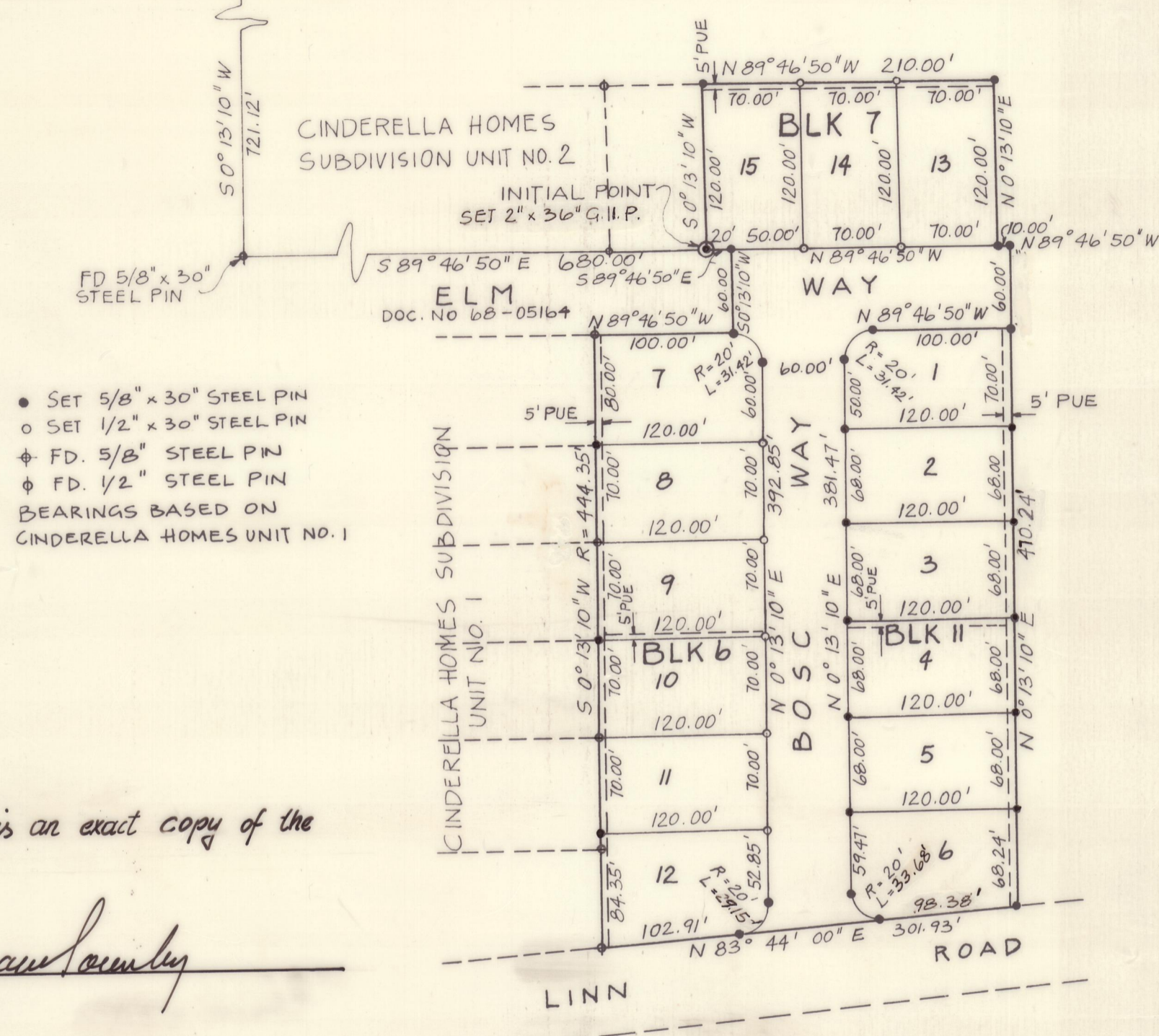
Harry Swipman
County Clerk

Filed for record this the 16 day of December, 1970 at 1:53 o'clock P.M. and recorded in Volume 11 of plats at page 32 of records of Jackson County, Oregon.

By: _____
Deputy

Harry Swipman
County Clerk

NW COR. D.L.C. NO 45
T.36 S. R.1 W. W.M.
N 89° 57' 50" E 266.00'
FD 3/4" IRON PIN



- SET 5/8" x 30" STEEL PIN
 - SET 1/2" x 30" STEEL PIN
 - ⊕ FD. 5/8" STEEL PIN
 - ⊕ FD. 1/2" STEEL PIN
- BEARINGS BASED ON CINDERELLA HOMES UNIT NO. 1

I hereby certify that this is an exact copy of the original plat.
Bryce W. Townley

ENGINEER'S CERTIFICATE

STATE OF OREGON } s.s.
County of Jackson }

I, Bryce W. Townley, a duly registered Engineer of the State of Oregon, being first duly sworn, do hereby certify that I have correctly surveyed and marked with proper monuments as provided by law the tract of land hereon shown and the said plat is a correct representation of the same and the following is an accurate description of the boundary lines:

Commencing at the Northwest corner of Donation Land Claim No 45 in Section 3 Township 36 South Range 1 West of the Willamette Meridian, Jackson County, Oregon; Thence along the North line of said claim, North 89° 57' 50" East 266.00 Feet; Thence South 0° 13' 10" West 721.12 Feet; Thence South 89° 46' 50" East 680.00 Feet to the initial point and the true point of beginning; Thence continue South 89° 46' 50" East 20.00 Feet; Thence South 0° 13' 10" West 60.00 Feet; Thence North 89° 46' 50" West 100.00 Feet; Thence South 0° 13' 10" West 444.35 Feet; Thence North 83° 44' 00" East 301.93 Feet; Thence North 0° 13' 10" East 410.24 Feet; Thence continue North 0° 13' 10" East 60.00 Feet; Thence North 89° 46' 50" West 10.00 Feet; Thence North 0° 13' 10" East 120.00 Feet; Thence North 89° 46' 50" West 210.00 Feet; Thence South 0° 13' 10" West 120.00 Feet to the initial point.

Excepting therefrom: That portion lying within Elm Way as described in Document No. 68-05164 of the official Records of Jackson County, Oregon.

Subscribed and sworn to before me this 10 day of June, 1970

My commission expires the 18 day of May, 1972

Bryce W. Townley
Engineer

Sarah J. McQuest
Notary Public for Oregon

