

# BLOSSOM HILL TERRACE UNIT NO. 5

LOCATED IN THE N.W. 1/4 SEC. 20, T. 37 S., R. 1 W., W.M.  
JACKSON COUNTY, OREGON

## DEDICATION

KNOW ALL MEN BY THESE PRESENTS, That we, *Homesites Incorporated*, an Oregon Corporation, are the owners in fee simple of the lands hereon described, and that we have subdivided the same into lots, block, and streets as shown hereon, and the number and size of the lots and the lengths of all lines are plainly set forth, and that this plat is a correct representation of the said subdivision, and we do hereby dedicate to the public for public use all streets and utility easements, shown hereon, and we do hereby designate said subdivision as, **BLOSSOM HILL TERRACE UNIT NO. 5** subdivision.

IN WITNESS WHEREOF, we have set our hands and seals this 27<sup>th</sup> day of October, 1969.

Homesites Incorporated:

*Clifford E. Lewis* Secretary  
*Roy P. Wilkes* President

STATE OF OREGON } ss  
County of Jackson

October 27, A. D. 1969.

Personally appeared the aboved named *Roy P. Wilkes*, President and *Clifford E. Lewis*, Secretary of *Homesites Incorporated*, an Oregon Corporation, and acknowledged the foregoing instrument to be their voluntary act and deed.

Before me:

*Andrew H. Smith*  
Notary Public for Oregon

My Commission expires the 4<sup>th</sup> day of March, 1973.

I certify that pursuant to authority granted to us by the Medford Planning Commission in open meeting of February 12, 1970, the above plat is hereby approved by the Medford Planning Commission. Dated this 24<sup>th</sup> day of June, 1970.

Attest:

*Richard Steven* Secretary  
*Richard Steven* Secretary

Examined and approved this 6<sup>th</sup> day of July, 1970.

*James Shoup*  
City Engineer

Examined and approved this 7 day of July, 1970.

*Kay E. Stewart*  
County Assessor

I hereby certify that this tracing is an exact copy of the original plat filed with the County Clerk

*J. A. Hoffbuhr*  
Surveyor

All taxes paid in full to date this the 8 day of July, 1970.

*Robert H. High*  
County Sheriff

Filed for record this the 8 day of July, 1970, at 1:26 P.M. and recorded in Volume 11 of plats at page 27 of Records of Jackson County, Oregon.

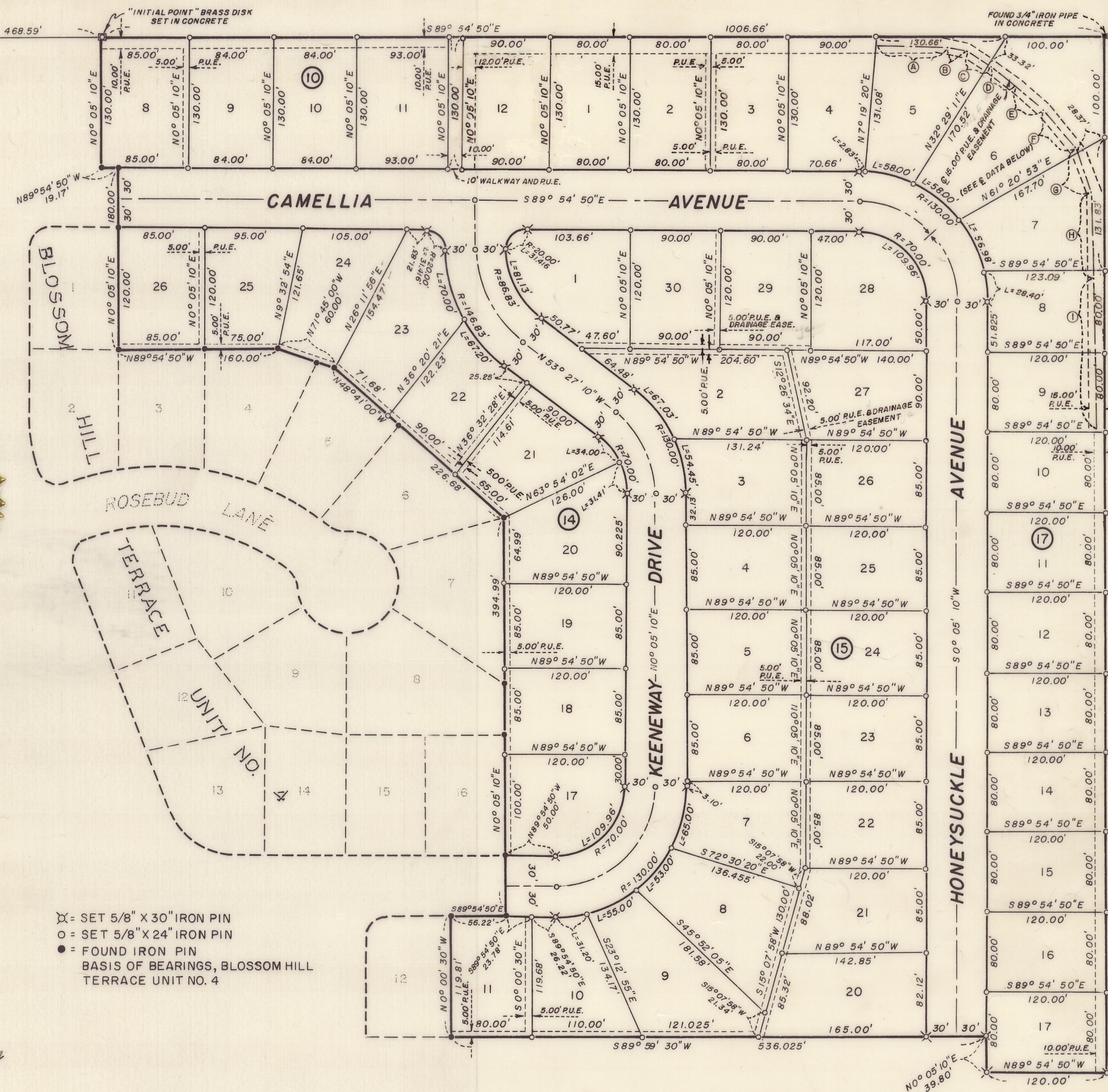
I hereby certify that this tracing is an exact copy of the original plat filed with the County Clerk

*J. A. Hoffbuhr*  
Surveyor

*Thelma C. McIntyre*  
Acting County Clerk

By \_\_\_\_\_ Deputy

SCALE: 1"=100'



⊗ = SET 5/8" X 30" IRON PIN  
○ = SET 5/8" X 24" IRON PIN  
● = FOUND IRON PIN  
BASIS OF BEARINGS, BLOSSOM HILL TERRACE UNIT NO. 4

### SURVEYOR'S CERTIFICATE

STATE OF OREGON } ss  
County of Jackson

*J. A. Hoffbuhr* a duly registered Surveyor of the State of Oregon, being first duly sworn, do hereby certify that I have correctly surveyed and marked with the proper monuments as provided by law the tract of land hereon shown and the said plat is a correct representation of the same, and the following is an accurate description of the boundary lines:-

COMMENCING AT THE SECTION CORNER COMMON TO SECTIONS 17, 18 AND 20, TOWNSHIP 37 SOUTH, RANGE 1 WEST OF THE WILLAMETTE MERIDIAN, JACKSON COUNTY, OREGON; THENCE ALONG THE NORTH LINE OF SAID SECTION 20, SOUTH 89° 54' 50" EAST 488.59 FEET TO A BRASS DISK SET IN CONCRETE, SAID BRASS DISK BEING THE MOST NORTHERLY NORTHEAST CORNER OF BLOSSOM HILL TERRACE, UNIT NO. 4 (RECORDED SUBDIVISION) AND THE INITIAL POINT OF BLOSSOM HILL TERRACE UNIT NO. 5 AND THE TRUE POINT OF BEGINNING; THENCE CONTINUING ALONG THE NORTH LINE OF SAID SECTION 20, SOUTH 89° 54' 50" EAST 1006.66 FEET; THENCE SOUTH 0° 05' 10" WEST 1031.83 FEET TO THE MOST EASTERLY NORTHEAST CORNER OF BLOSSOM HILL TERRACE UNIT NO. 4 (RECORDED SUBDIVISION); THENCE ALONG THE BOUNDARY LINE OF THE AFOREMENTIONED UNIT NO. 4 AS FOLLOWS: NORTH 89° 54' 50" WEST 120.00 FEET, NORTH 0° 05' 10" EAST 38.80 FEET, SOUTH 89° 54' 50" WEST 536.025 FEET, NORTH 0° 05' 10" WEST 119.81 FEET, SOUTH 89° 54' 50" EAST 56.22 FEET, NORTH 0° 05' 10" EAST 394.99 FEET, NORTH 48° 41' 00" WEST 226.68 FEET, NORTH 71° 45' 00" WEST 60.00 FEET, NORTH 89° 54' 50" WEST 160.00 FEET, NORTH 0° 05' 10" EAST 180.00 FEET, NORTH 89° 54' 50" WEST 19.17 FEET, NORTH 0° 05' 10" EAST 130.00 FEET TO THE INITIAL POINT.

Subscribed and sworn to before me this 27<sup>th</sup> day of October, 1969.  
My Commission expires the 4<sup>th</sup> day of March, 1973.

*J. A. Hoffbuhr* Surveyor  
*Andrew H. Smith* Notary Public for Oregon

### BEARINGS & DISTANCES FOR DRAINAGE EASEMENT THRU LOTS 5 TO 9, BLOCK 17

- Ⓐ 89° 54' 50" E 72.59'
- Ⓑ 70° 12' 01" E 19.22'
- Ⓒ 58° 23' 39" E 26.84'
- Ⓓ 53° 23' 57" E 35.21'
- Ⓔ 48° 39' 21" E 37.87'
- Ⓕ 43° 38' 26" E 51.71'
- Ⓖ 16° 35' 56" E 44.87'
- Ⓗ 3° 18' 05" E 87.77'
- Ⓙ 50° 05' 10" W 149.90'

