

GOLD MINE SUBDIVISION UNIT- NO. 1 DEDICATION

LOCATED IN
SOUTHWEST 1/4 OF SECTION 29, T. 37 S., R. 2 W., W.M.
JACKSON COUNTY, OREGON

KNOW ALL MEN BY THESE PRESENTS That we Ralph E. Rutherford and Ozella V. Rutherford are the owners in fee simple of the lands hereon described and that we have subdivided the same into lots, blocks, and streets as shown hereon, and the number and size of the lots and the length of all lines are plainly set forth, and that this plat is a correct representation of the said subdivision, and we do hereby dedicate to the public for public use all streets hereon together with all easements as shown hereon and we do hereby designate said subdivision as GOLD MINE SUBDIVISION - UNIT NO. 1

Ralph E. Rutherford *Ozella V. Rutherford*
RALPH E. RUTHERFORD OZELLA V. RUTHERFORD

STATE OF OREGON } SS
County of Jackson }
OCTOBER 25 A. D. 1967

Personally appeared the aboved named Ralph E. Rutherford and Ozella V. Rutherford and acknowledged the foregoing instrument to be their voluntary act and deed. Before me:

B. H. MacIntosh
Notary Public for Oregon

My Commission expires the 22 day of AUGUST 1968

Examined and approved by the Jacksonville City Planning Commission
in regular session this 16 day of NOV 1967

Attest:

Gerald M. Shaver *M. Benton Smith*
Secretary President

Examined and approved this 7th day of December 1967

Raymond C. Barker
County Assessor

I hereby certify that this tracing is an exact copy of the original plat filed with the County Clerk

J. A. Hoffbuhr
Surveyor

All taxes paid in full to date this the 7 day of Dec 1967

A. Howard Wright
County Sheriff

Examined and recommended for approval by the County Court
this the 11th day of DECEMBER 1967

Mark E. Boylan
County Surveyor

For order of the County Court approving this plat see Volume _____ page _____
of County Commissioners Journal of Proceedings.

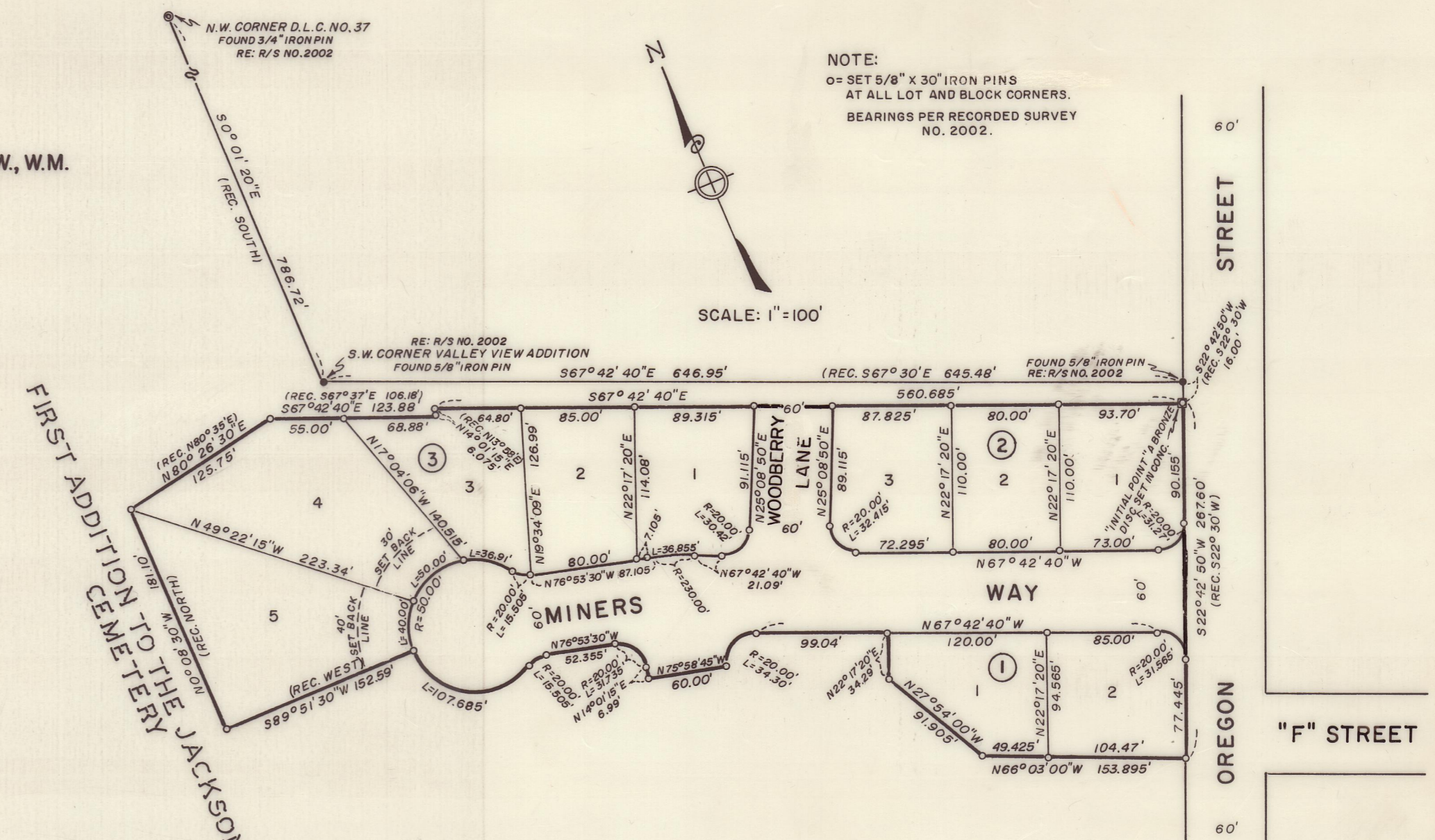
Emm Vahl
County Clerk

By: _____
Deputy

Filed for record this the 15 day of Dec 1967, at 11:30 O'Clock A M and
recorded in Volume 11 of plats at page 8 of Records of Jackson County, Oregon.

Emm Vahl
County Clerk

By: _____
Deputy



SURVEYOR'S CERTIFICATE

STATE OF OREGON } SS
County of Jackson }

I, J. A. Hoffbuhr a duly registered Surveyor of the State of Oregon, being first duly sworn, do hereby certify that I have correctly surveyed and marked with the proper monuments as provided by law the tract of land hereon shown and the said plat is a correct representation of the same, and the following is an accurate description of the boundary lines:-

COMMENCING AT THE NORTHWEST CORNER OF DONATION LAND CLAIM NO. 37, TOWNSHIP 37 SOUTH, RANGE 2 WEST, WILLAMETTE MERIDIAN, JACKSON COUNTY, OREGON; THENCE ALONG THE WEST LINE OF THE AFOREMENTIONED CLAIM LINE, SOUTH 0° 01' 20" EAST (RECORD SOUTH) 786.72 FEET TO A FIVE EIGHTH INCH IRON PIN AT THE SOUTHWEST CORNER OF VALLEY VIEW ADDITION (RECORDED SUBDIVISION); THENCE ALONG THE SOUTHERLY LINE AND ITS PROJECTION THEREOF, OF THE AFOREMENTIONED VALLEY VIEW ADDITION, SOUTH 67° 42' 40" EAST 646.95 FEET (RECORD SOUTH 67° 30' EAST 645.48 FEET) TO A FIVE EIGHTH INCH IRON PIN ON THE WESTERLY RIGHT OF WAY LINE OF OREGON STREET; THENCE ALONG THE AFOREMENTIONED WESTERLY RIGHT OF WAY LINE SOUTH 22° 42' 50" WEST (RECORD SOUTH 22° 30' WEST) 16.00 FEET TO A BRONZE DISC SET IN CONCRETE (INITIAL POINT); THENCE CONTINUE ALONG THE AFOREMENTIONED WESTERLY RIGHT OF WAY LINE, SOUTH 22° 42' 50" WEST (RECORD SOUTH 22° 30' WEST) 267.60 FEET TO A FIVE EIGHTH INCH IRON PIN; THENCE NORTH 66° 03' 00" WEST 153.895 FEET TO A FIVE EIGHTH INCH IRON PIN; THENCE NORTH 27° 54' 00" WEST 91.905 FEET TO A FIVE EIGHTH INCH IRON PIN; THENCE NORTH 22° 17' 20" EAST 34.29 FEET TO A FIVE EIGHTH INCH IRON PIN ON THE SOUTHERLY RIGHT OF WAY LINE OF MINERS WAY; THENCE ALONG THE AFOREMENTIONED SOUTHERLY RIGHT OF WAY LINE, NORTH 67° 42' 40" WEST 99.04 FEET TO A FIVE EIGHTH INCH IRON PIN AT A POINT OF CURVE; THENCE ALONG THE ARC OF A 20.00 FOOT RADIUS CURVE TO THE LEFT A DISTANCE OF 34.30 FEET (THE LONG CHORD WHICH BEARS SOUTH 63° 09' 20" WEST 30.25 FEET) TO A FIVE EIGHTH INCH IRON PIN AT A POINT OF TANGENT; THENCE NORTH 75° 58' 45" WEST 60.00 FEET TO A FIVE EIGHTH INCH IRON PIN; THENCE NORTH 14° 01' 15" EAST 6.99 FEET TO A FIVE EIGHTH INCH IRON PIN AT A POINT OF CURVE; THENCE ALONG THE ARC OF A 20.00 FOOT RADIUS CURVE TO THE LEFT A DISTANCE OF 31.735 FEET (THE LONG CHORD WHICH BEARS NORTH 31° 26' 10" WEST 28.51 FEET) TO A FIVE EIGHTH INCH IRON PIN AT A POINT OF TANGENT ON THE SOUTHERLY RIGHT OF WAY LINE OF MINERS WAY; THENCE ALONG THE AFOREMENTIONED SOUTHERLY RIGHT OF WAY LINE, NORTH 76° 53' 30" WEST 52.355 FEET TO A FIVE EIGHTH INCH IRON PIN AT A POINT OF CURVE; THENCE ALONG THE ARC OF A 20.00 FOOT RADIUS CURVE TO THE LEFT A DISTANCE OF 15.505 FEET (THE LONG CHORD WHICH BEARS SOUTH 80° 54' 00" WEST 15.12 FEET) TO A FIVE EIGHTH INCH IRON PIN AT A POINT OF REVERSE CURVE; THENCE ALONG THE ARC OF A 50.00 FOOT RADIUS CURVE TO THE RIGHT A DISTANCE OF 107.685 FEET (THE LONG CHORD WHICH BEARS NORTH 59° 36' 25" WEST 88.05 FEET) TO A FIVE EIGHTH INCH IRON PIN AT A POINT ON CURVE; THENCE SOUTH 89° 51' 30" WEST (RECORD WEST) 152.59 FEET TO A FIVE EIGHTH INCH IRON PIN ON THE EAST LINE OF THE FIRST ADDITION TO THE JACKSONVILLE CEMETERY (RECORDED); THENCE ALONG THE AFOREMENTIONED EAST LINE, NORTH 0° 08' 30" WEST (RECORD NORTH) 181.10 FEET TO A FIVE EIGHTH INCH IRON PIN ON THE NORTH LINE OF THE AFOREMENTIONED FIRST ADDITION; THENCE NORTH 80° 26' 30" EAST (RECORD NORTH 80° 35' EAST) 125.75 FEET TO A FIVE EIGHTH INCH IRON PIN; THENCE SOUTH 67° 42' 40" EAST 123.88 FEET (RECORD SOUTH 67° 37' EAST 106.18 FEET) TO A FIVE EIGHTH INCH IRON PIN; THENCE NORTH 14° 01' 15" EAST (RECORD NORTH 13° 58' EAST) 6.075 FEET TO A FIVE EIGHTH INCH IRON PIN; THENCE SOUTH 67° 42' 40" EAST 560.685 FEET TO THE INITIAL POINT.



J. A. Hoffbuhr
Surveyor
Subscribed and sworn to before me this 20th day of OCTOBER 1967
My Commission expires the 22nd day of JUNE 1968 *Larry N. Schade*