

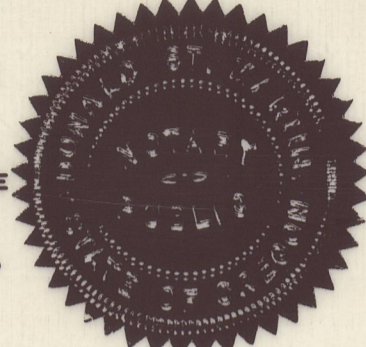
SURVEYOR'S CERTIFICATE

STATE OF OREGON SS  
COUNTY OF JACKSON

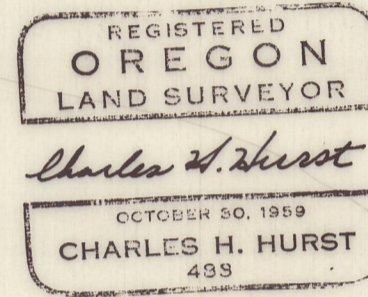
I, CHARLES H. HURST, A DULY REGISTERED SURVEYOR IN THE STATE OF OREGON, BEING FIRST DULY SWORN, DO HEREBY CERTIFY THAT I HAVE CORRECTLY SURVEYED AND MARKED WITH PROPER MONUMENTS AS PROVIDED BY LAW THE TRACT OF LAND HEREON SHOWN AND THE SAID PLAT IS A CORRECT REPRESENTATION OF THE SAME, AND THE FOLLOWING IS AN ACCURATE DESCRIPTION OF THE BOUNDARY LINES:

BEGINNING AT A POINT WHICH BEARS NORTH 330.11' AND EAST 212.78' FEET FROM THE SOUTHWEST CORNER OF DONATION LAND CLAIM 41, TOWNSHIP 35 SOUTH, RANGE 1 WEST OF THE WILLAMETTE MERIDIAN, JACKSON COUNTY, OREGON, THENCE N 2°47'25" W ALONG THE WEST BOUNDARY OF THAT TRACT OF LAND DESCRIBED IN OFFICIAL RECORDS NUMBER 67-00140 OF JACKSON COUNTY, OREGON, A DISTANCE OF 1701.90 FEET, THENCE ALONG THE ARC OF A 520.87 FEET RADIUS CURVE RIGHT 435.39 FEET, THENCE N 48°06'10" E 41.00 FEET, THENCE LEAVE SAID WEST BOUNDARY AND RUN S 44°53'50" E 30.00 FEET, THENCE ALONG THE ARC OF A 100.09 FEET RADIUS CURVE RIGHT 199.68 FEET, THENCE S 20°35'20" E 53.52 FEET, THENCE ALONG THE ARC OF A 97.11 FEET RADIUS CURVE LEFT 60.85 FEET, THENCE S 56°29'35" E 50.62 FEET, THENCE ALONG THE ARC OF A 159.16 FEET RADIUS CURVE RIGHT 35.63 FEET, THENCE S 43°39'55" E 134.77 FEET, THENCE ALONG THE ARC OF A 86.81 FEET RADIUS CURVE RIGHT 107.73 FEET, THENCE S 27°26'05" W 32.05 FEET, THENCE ALONG THE ARC OF A 86.81 FEET RADIUS CURVE LEFT 126.99 FEET, THENCE ALONG THE ARC OF A 263.80 FEET RADIUS CURVE RIGHT 54.57 FEET, THENCE S 44°31'55" E 43.31 FEET, THENCE ALONG THE ARC OF A 53.05 FEET RADIUS CURVE LEFT 44.47 FEET, THENCE S 63°01'20" E 32.58 FEET, THENCE ALONG THE ARC OF A 146.91 FEET RADIUS CURVE RIGHT 75.74 FEET, THENCE S 63°01'20" E 17.14 FEET, THENCE ALONG THE ARC OF A 286.48 FEET RADIUS CURVE RIGHT 66.60 FEET, THENCE S 49°42'10" E 37.46 FEET, THENCE ALONG THE ARC OF A 249.11 FEET RADIUS RIGHT 63.42 FEET, THENCE S 35°06'55" E 58.44 FEET, THENCE ALONG THE ARC OF A 55.63 FEET RADIUS CURVE LEFT 53.29 FEET, THENCE EAST 46.77 FEET, THENCE ALONG THE ARC OF A 36.97 FEET RADIUS CURVE RIGHT 23.82 FEET, THENCE S 53°05'00" E 137.43 FEET, THENCE ALONG THE ARC OF A 61.61 FEET RADIUS CURVE RIGHT 31.07 FEET, THENCE S 24°11'15" E 66.97 FEET, THENCE ALONG THE ARC OF A 150.78 FEET RADIUS CURVE RIGHT 90.25 FEET, THENCE S 10°06'20" W 31.50 FEET, THENCE ALONG THE ARC OF A 56.73 FEET RADIUS CURVE LEFT 29.65 FEET, THENCE S 19°50'25" E 29.24 FEET, THENCE ALONG THE ARC OF 229.18 FEET RADIUS CURVE RIGHT 60.20 FEET, THENCE S 4°47'20" E 26.35 FEET, THENCE ALONG THE ARC OF A 163.70 FEET RADIUS CURVE LEFT 51.64 FEET, THENCE S 22°51'45" E 125.63 FEET, THENCE ALONG THE ARC OF A 139.75 FEET RADIUS CURVE RIGHT 61.67 FEET, THENCE S 2°25'25" W 90.72 FEET, THENCE ALONG THE ARC OF A 52.09 FEET RADIUS CURVE LEFT 34.54 FEET, THENCE S 35°34'25" E 19.66 FEET, THENCE ALONG THE ARC OF A 71.62 FEET RADIUS CURVE RIGHT 33.52 FEET, THENCE S 8°45'50" E 470.73 FEET TO A POINT 330.00' NORTH OF THE SOUTH BOUNDARY OF DONATION LAND CLAIM 41, SAID TOWNSHIP AND RANGE, THENCE S 89°58'10" W PARALLEL TO SAID BOUNDARY A DISTANCE OF 1402.44 FEET TO THE POINT OF BEGINNING.

Charles H. Hurst  
SURVEYOR



SUBSCRIBED AND SWORN TO BEFORE ME THIS 6<sup>th</sup> DAY OF September, 1966  
NOTARY PUBLIC FOR OREGON Donald St. Martin  
MY COMMISSION EXPIRES THE 26<sup>th</sup> DAY OF May, 1970



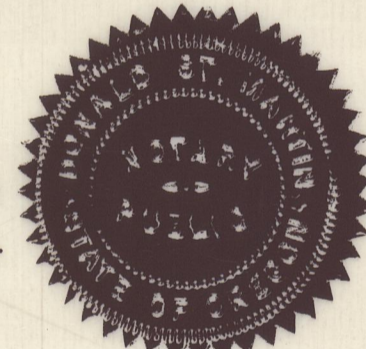
DEDICATION

EUGENE L. GARNER & HELEN C. GARNER  
HAROLD A. AMES & VERA M. AMES

KNOW ALL MEN BY THESE PRESENTS THAT WE ARE THE OWNERS IN FEE SIMPLE OF LAND HEREON DESCRIBED AND THAT WE HAVE SUBDIVIDED THE SAME INTO LOTS, BLOCKS AND STREETS AS SHOWN HEREON, AND THE NUMBER AND SIZE OF THE LOTS AND THE LENGTH OF ALL LINES ARE PLAINLY SET FORTH, AND THAT THIS PLAT IS A CORRECT REPRESENTATION OF THE SAID SUBDIVISION, AND WE DO HEREBY DEDICATE TO THE PUBLIC FOR PUBLIC USE ALL STREETS AND EASEMENTS AS SHOWN HEREON AND WE DO HEREBY DESIGNATE SAID SUBDIVISION AS HILLDALE PARK SUBDIVISION.

IN WITNESS WHEREOF WE HAVE SET OUR HANDS AND SEALS THIS 6<sup>th</sup> DAY OF September, 1966

Eugene L. Garner  
Helen C. Garner  
Harold A. Ames  
Vera M. Ames  
STATE OF OREGON SS  
COUNTY OF JACKSON



SEPTEMBER 6TH, AD, 1966  
PERSONALLY APPEARED THE ABOVE NAMED  
FOREGOING INSTRUMENT TO BE THEIR VOLUNTARY ACT AND DEED. BEFORE ME  
AND ACKNOWLEDGED THE  
NOTARY PUBLIC FOR OREGON  
MY COMMISSION EXPIRES THE 26<sup>th</sup> DAY OF May, 1970

EXAMINED AND APPROVED FOR THE USE OF INDIVIDUAL WELLS AND INDIVIDUAL SEWAGE DISPOSAL FACILITIES  
THIS 1 DAY OF Sept., 1966  
County Health Officer

EXAMINED AND APPROVED BY THE EAGLE POINT IRRIGATION DISTRICT IN SESSION THIS 2<sup>nd</sup> DAY OF August 1966  
Secretary  
President

EXAMINED AND APPROVED THIS 20<sup>th</sup> DAY OF October, 1966  
County Assessor

ALL TAXES PAID IN FULL TO DATE THIS THE 30<sup>th</sup> DAY OF Oct., 1966  
County Sheriff

EXAMINED AND RECOMMENDED FOR APPROVAL BY THE COUNTY COURT THIS THE 9<sup>th</sup> DAY OF Jan., 1967.  
County Surveyor

EXAMINED AND APPROVED BY THE JACKSON COUNTY PLANNING COMMISSION IN SESSION THE 13<sup>th</sup> DAY OF July, 1966

George James  
SECRETARY  
Wilbur  
VICE PRESIDENT

FOR ORDER OF THE COUNTY COURT APPROVING THIS PLAT SEE VOLUME PAGE OF COUNTY COMMISSIONER'S JOURNAL OF PROCEEDINGS.

County Clerk

BY Deputy

FILED FOR RECORD THIS THE 13<sup>th</sup> DAY OF January, 1967 AT 12:28 O'CLOCK P.M. AND RECORDED IN VOLUME 10 OF PLATS AT PAGE 57 OF RECORDS OF JACKSON COUNTY

County Clerk

BY Deputy

HILLDALE PARK SUBDIVISION  
LOCATED IN D.L.C. 41, SECTION 14  
T.35 S., R.1 W., W.M., JACKSON COUNTY, OREGON

I HEREBY CERTIFY THAT THIS TRACING IS AN EXACT COPY OF THE ORIGINAL PLAT.

Charles H. Hurst  
SURVEYOR

FD. SW COR. D.L.C. 41  
SET 3/4"x30" IRON PIN  
& BRASS CAP

NORTH  
350.11'

LINE OF SIGHT TO SE COR. D.L.C. 41  
N 89° 58' 10" E

30.03'

N 2° 47' 25" W  
234.16'

INITIAL PT.  
BR. DISC &  
CONG. MON.

300.00'

EAST 212.78'

300.00'

N 2° 47' 25" W  
239.76'

220.00'

N 2° 47' 25" W  
244.27'

1372.41'

S 89° 58' 10" W  
334.06'

300.00'

N 2° 47' 25" W  
306.01'

387.76'

25.16'

N 6° 48' 40" W  
46.07'

49.04'

73.84'

105.42'

118.05'

218.94'

470.73'

60.71'

99.02'

33.55'

34.64'

61.67'

125.63'

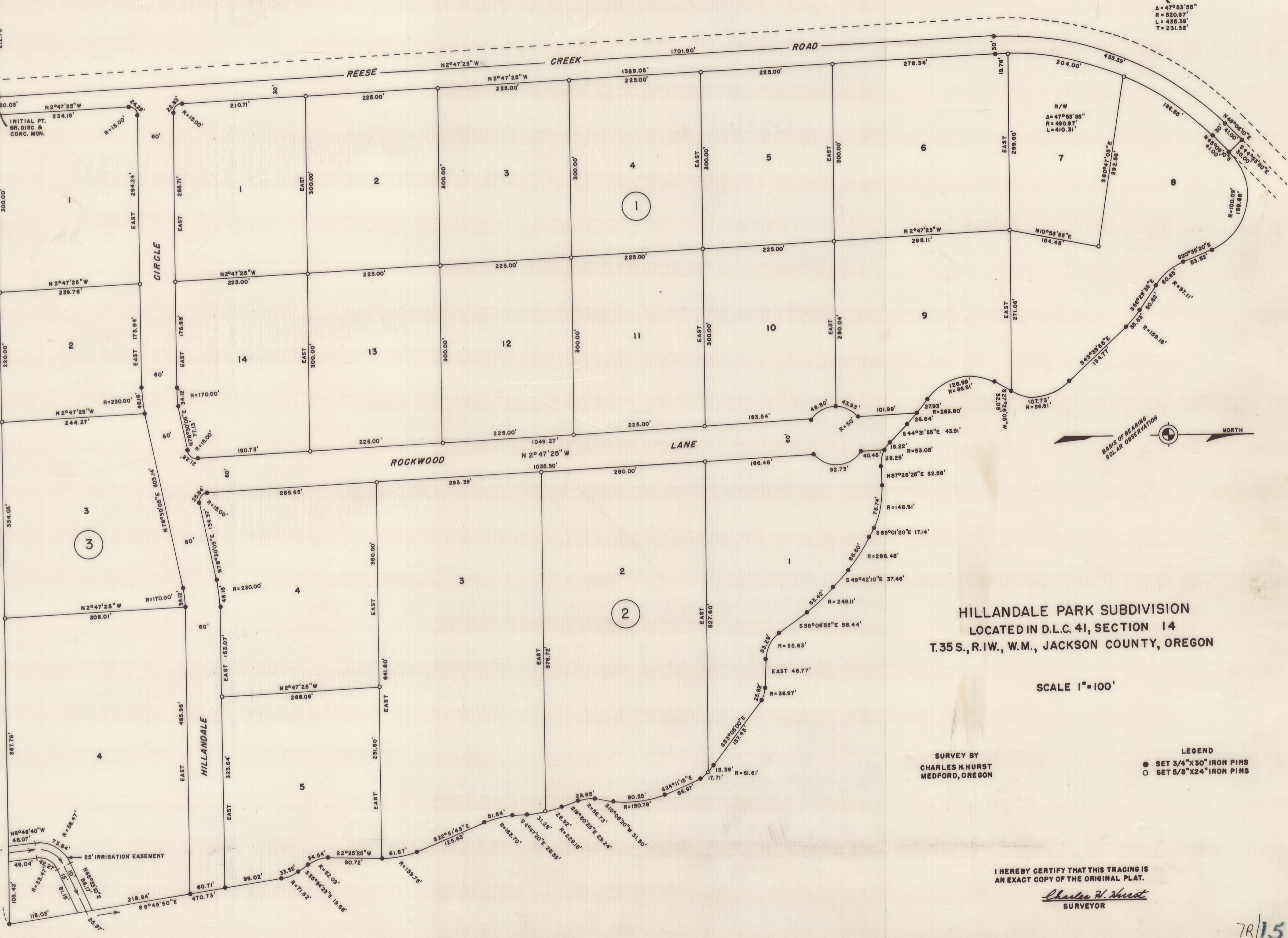
125.63'

125.63'

125.63'

125.63'

125.63'



Δ = 47° 53' 55"  
R = 520.87'  
L = 435.39'  
T = 231.32'

R/W  
Δ = 47° 53' 55"  
R = 490.87'  
L = 410.31'

25.99'  
R = 86.81'

107.73'  
R = 86.81'

16.22'  
R = 55.05'

17.14'  
R = 286.48'

37.46'  
R = 249.11'

36.97'  
R = 36.97'

17.71'  
R = 61.61'

13.36'  
R = 61.61'

66.97'  
R = 150.78'

24.92'  
R = 229.19'

24.92'  
R = 229.19'

HILLANDALE PARK SUBDIVISION  
LOCATED IN D.L.C. 41, SECTION 14  
T.35S., R.1W., W.M., JACKSON COUNTY, OREGON

SCALE 1" = 100'

SURVEY BY  
CHARLES H. HURST  
MEDFORD, OREGON

LEGEND  
● SET 3/4"x30" IRON PINS  
○ SET 5/8"x24" IRON PINS

I HEREBY CERTIFY THAT THIS TRACING IS  
AN EXACT COPY OF THE ORIGINAL PLAT.

*Charles H. Hurst*  
SURVEYOR