

WEST PINE VILLA SUBDIVISION

LOCATED IN THE NORTHWEST 1/4 OF SECTION 10, TOWNSHIP 37 SOUTH, RANGE 2 WEST OF THE WILLAMETTE MERIDIAN
JACKSON COUNTY, OREGON

DEDICATION

KNOW ALL MEN BY THESE PRESENTS That we N. A. Mead and Rachel M. Mead are the owners in fee simple of the lands hereon described and that we have subdivided the same into lots, blocks, and streets as shown hereon, and the number and size of the lots and the length of all lines are plainly set forth, and that this plat is a correct representation of the said subdivision, and we do hereby dedicate to the public for public use all streets hereon together with all easements as shown hereon and we do hereby designate said subdivision as WEST PINE VILLA SUBDIVISION.

N.A. Mead
N.A. MEAD

Rachel M. Mead
RACHEL M. MEAD

STATE OF OREGON }
County of Jackson } SS

August 11 A.D. 1966.

Personally appeared the aboves named N. A. Mead and Rachel M. Mead and acknowledged the foregoing instrument to be their voluntary act and deed. Before me:

Larry G. Schade
Notary Public for Oregon

My Commission expires the 22nd day of June 1968.

Examined and approved by the City of Central Point Planning Commission in regular session this 29th day of March 1966.

Norman R. Bruce
Secretary

Lewis J. Co
President

Examined and approved by the Rogue River Valley Irrigation District in regular session this 6th day of Sept. 1966.

Lorraine A. Beard
Acting Secretary

Otto Bohmert
President

Examined and approved this 13th day of September 1966.

Thos. W. Hutton
County Assessor, Home & Wood Dep.

All taxes paid in full to date this the 14th day of Sept. 1966.

Ar. Arnold Light
County Sheriff

Examined and recommended for approval by the County Court this the 20th day of Sept. 1966.

Jack E. Boyd
County Surveyor

For order of the County Court approving this plat see Volume _____ page _____ of County Commissioners Journal of Proceedings.

Ermy Adell
County Clerk

By _____
Deputy

Filed for record this the 30th day of September 1966, at 10:39 O'Clock A.M. and recorded in Volume 10 of plats at page 46 of Records of Jackson County, Oregon.

Ermy Adell
County Clerk

By _____
Deputy

SURVEYOR'S CERTIFICATE

STATE OF OREGON }
County of Jackson } SS

I, J. A. Hoffbuhr a duly registered Surveyor of the State of Oregon, being first duly sworn, do hereby certify that I have correctly surveyed and marked with the proper monuments as provided by law the tract of land hereon shown and the said plat is a correct representation of the same, and the following is an accurate description of the boundary lines:-

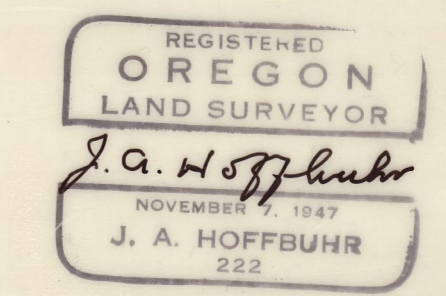
COMMENCING AT THE NORTHWEST CORNER OF DONATION LAND CLAIM NO. 53 IN TOWNSHIP 37 SOUTH RANGE 2 WEST OF THE WILLAMETTE MERIDIAN, JACKSON COUNTY, OREGON; THENCE SOUTH 0° 04' 15" WEST 917.40 FEET TO A BRASS DISC SET IN CONCRETE FOR THE INITIAL POINT AND THE TRUE POINT OF BEGINNING; THENCE NORTH 89° 49' 15" EAST 939.84 FEET; THENCE SOUTH 0° 04' 15" WEST 991.4 FEET; THENCE SOUTH 89° 55' 45" EAST 139.27 FEET; THENCE SOUTH 0° 04' 15" WEST 558.56 FEET; THENCE SOUTH 38° 10' 50" WEST 322.12 FEET; THENCE SOUTH 35° 08' 30" EAST 179.00 FEET TO A POINT ON THE NORTHERLY RIGHT OF WAY LINE OF PINE STREET; THENCE ALONG THE SAID NORTHERLY RIGHT OF WAY LINE, SOUTH 54° 51' 30" WEST 499.73 FEET; THENCE NORTH 35° 08' 30" WEST 20.00 FEET; THENCE SOUTH 54° 51' 30" WEST 59.41 FEET; THENCE SOUTH 35° 08' 30" EAST 20.00 FEET; THENCE SOUTH 54° 51' 30" WEST 20.00 FEET TO A POINT OF CURVE; THENCE ALONG THE ARC OF A 290.44 FOOT RADIUS CURVE TO THE LEFT 76.90 FEET, (THE LONG CHORD WHICH BEARS SOUTH 47° 16' 24" WEST 76.67 FEET); THENCE NORTH 0° 04' 15" EAST 144.41 FEET; THENCE NORTH 89° 55' 45" WEST 435.60 FEET; THENCE NORTH 0° 04' 15" EAST 14.52 FEET; THENCE NORTH 89° 55' 45" WEST 18.48 FEET; THENCE NORTH 0° 04' 15" EAST 1280.40 FEET TO THE INITIAL POINT. (EXCEPTING THEREFROM THE 1 FOOT RESERVED STRIPS OFF THE NORTHERLY ENDS OF DONNA WAY AND BRAD WAY AS DELINEATED HEREON.)

J. A. Hoffbuhr
Surveyor

Subscribed and sworn to before me this 9th day of August 1966.

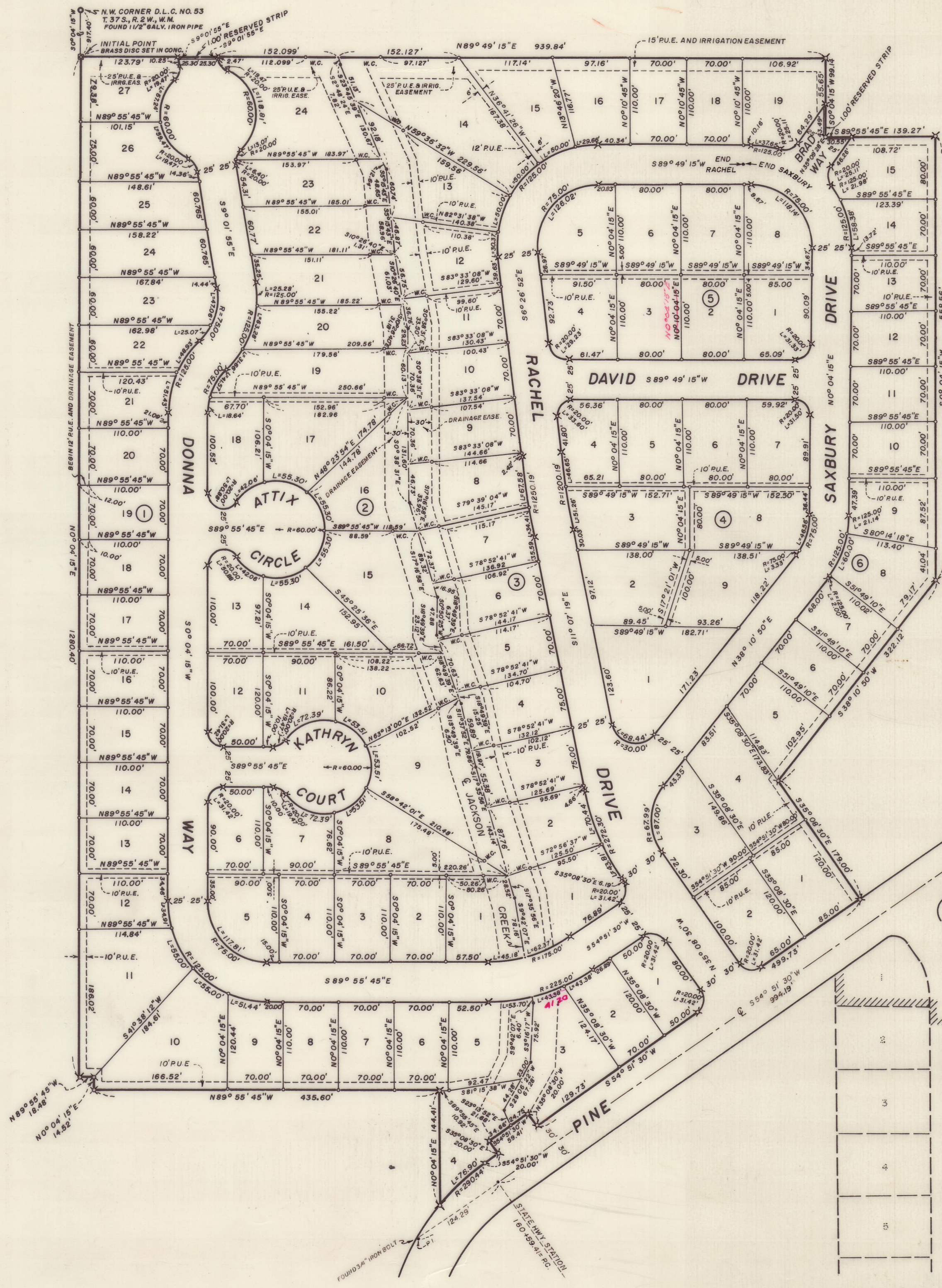
Larry G. Schade
Notary Public for Oregon

My Commission expires the 22nd day of June 1968.



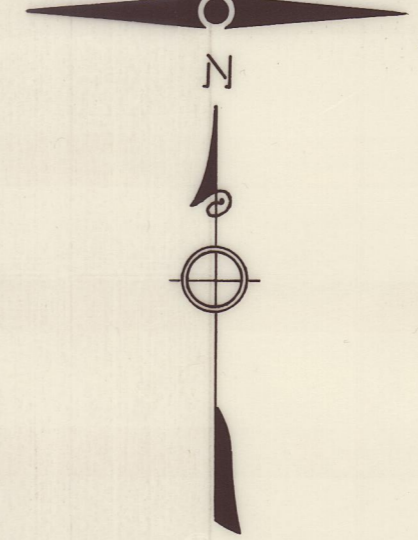
I hereby certify that this tracing is an exact copy of the original plat filed with the County Clerk

J. A. Hoffbuhr
Surveyor



WEST PINE VILLA SUBDIVISION

LOCATED IN THE
NORTHWEST 1/4 OF SECTION 10,
TOWNSHIP 37 SOUTH, RANGE 2 WEST
OF THE WILLAMETTE MERIDIAN
JACKSON COUNTY, OREGON



SCALE: 1"=100'

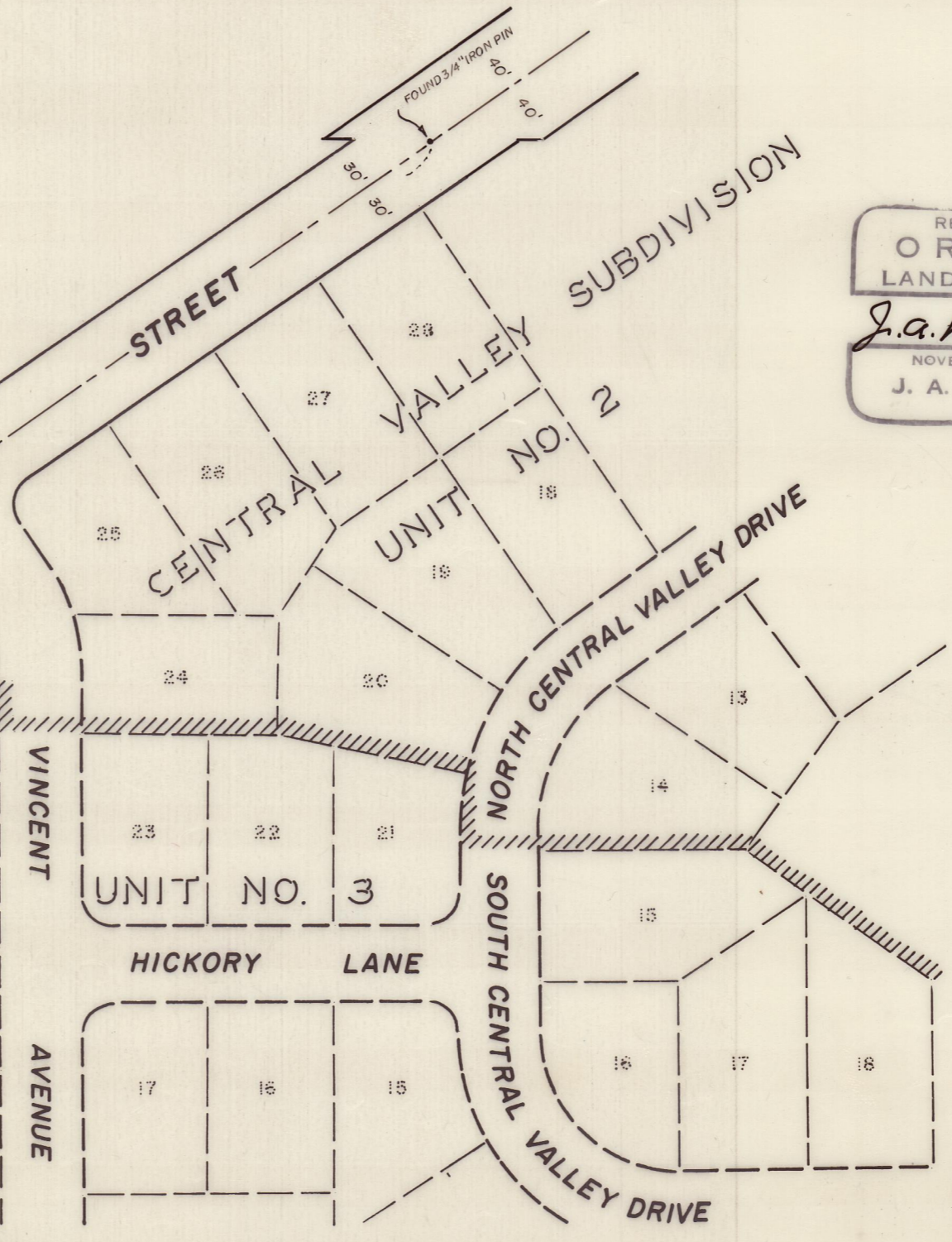
NOTE

- SET 5/8" X 24" IRON PIN
- ✱ SET 5/8" X 30" IRON PIN BLOCK CORNERS
- W.C. - SET 5/8" X 24" IRON PIN WITNESS CORNER

BASIS OF BEARING:--CENTRAL VALLEY SUBDIVISION UNIT NO. 1

FOR ORDER FOR PLAT
CORRECTION SEE
OFFICIAL RECORDS
DOC. NO. 67-00816
19 E. BOYDEN 2/14/67
L.P.

REGISTERED
OREGON
LAND SURVEYOR
J. A. Hoffburr
NOVEMBER 7, 1947
J. A. HOFFBURR
222



I hereby certify that this tracing is an
exact copy of the original plat filed
with the County Clerk

J. A. Hoffburr
Surveyor