

CENTRAL VALLEY SUBDIVISION LOCATED IN SEC.10, T.37S.,R.2W.,WM.

DEDICATION

KNOW ALL MEN BY THESE PRESENTS THAT WE MYRON E. CORCORAN, ESTHER A. CORCORAN, KENNETH L. CURTIS, LILY F. CURTIS AND JENNIE V. ST. ARNOLD ARE THE OWNERS IN FEE SIMPLE OF THE LANDS HEREON DESCRIBED AND THAT WE HAVE SUBDIVIDED INTO LOTS, BLOCKS AND STREETS AS SHOWN HEREON AND THE NUMBER AND SIZE OF LOTS AND LENGTH OF ALL LINES ARE PLAINLY SET FORTH, AND THAT THIS PLAT IS A CORRECT REPRESENTATION OF SAID SUBDIVISION, AND WE DO HEREBY DEDICATE TO THE PUBLIC FOR PUBLIC USE ALL STREETS AS SHOWN HEREON, AND WE DO HEREBY DESIGNATE SAID SUBDIVISION AS CENTRAL VALLEY SUBDIVISION

IN WITNESS WHEREOF WE HAVE SET OUR HANDS AND SEALS THIS 24th DAY OF August, 1961

Myron E. Corcoran
Esther A. Corcoran
Jennie V. St. Arnold
Kenneth L. Curtis
Lily F. Curtis

STATE OF OREGON)
COUNTY OF JACKSON)
August 24 AD. 1961

PERSONALLY APPEARED THE ABOVE NAMED MYRON E. CORCORAN, ESTHER A. CORCORAN, KENNETH L. CURTIS, LILY F. CURTIS, AND JENNIE V. ST. ARNOLD AND ACKNOWLEDGED THE FOREGOING INSTRUMENT TO BE THEIR VOLUNTARY ACT AND DEED. BEFORE ME December Hopkins
Notary Public for Oregon

MY COMMISSION EXPIRES THE 15th DAY OF June 1964

EXAMINED AND APPROVED BY THE CITY OF CENTRAL POINT PLANNING COMMISSION IN REGULAR SESSION THIS 28 DAY OF August 1961

ATTEST: Robert C. Jantzen Secretary
Dale Bartley President

EXAMINED AND APPROVED BY THE ROGUE RIVER VALLEY IRRIGATION DISTRICT IN REGULAR SESSION THIS 5th DAY OF Sept. 1961

ATTEST: Harold W. Lister Secretary
Otto Bohmert President

EXAMINED AND APPROVED THIS 11th DAY OF October 1961

Thad W. Hatten
County Assessor

ALL TAXES PAID IN FULL TO DATE THIS THE 17th DAY OF October 1961

EXAMINED AND RECOMMENDED FOR APPROVAL BY THE COUNTY COURT THIS THE 13th DAY OF October 1961

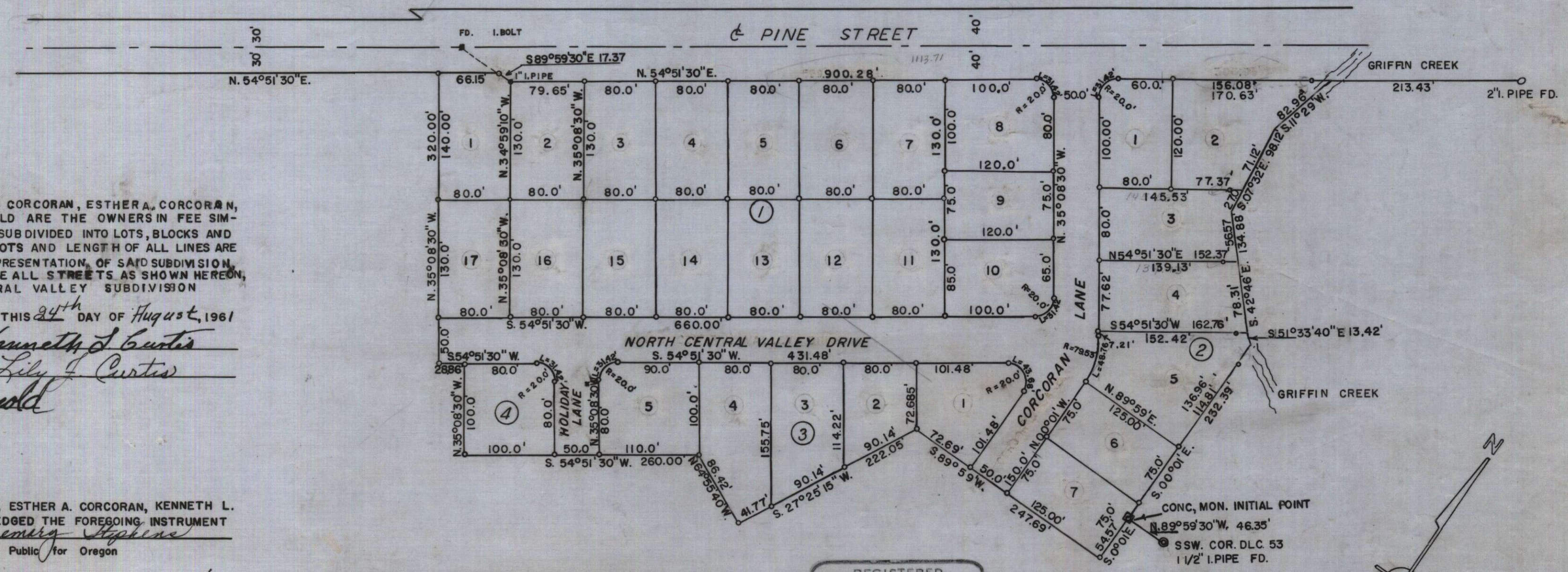
Mark E. Bayless
County Surveyor

FOR ORDER OF THE COUNTY COURT APPROVING THIS PLAT SEE VOLUME 55, PAGE 62, OF COUNTY COMMISSIONER'S JOURNAL OF PROCEEDINGS.

mm adde
County Clerk

523803
FILED FOR RECORD THIS THE 20 DAY OF October 1961 AT 3:47 O'CLOCK P. M. AND RECORDED IN VOLUME 8 OF PLATS AT PAGE 55 OF RECORDS OF JACKSON COUNTY.

mm adde
County Clerk



BEARING = SOLAR OBSERVATION
o = 5/8" IRON PIN
SCALE 1" = 100 FEET



SURVEYOR'S CERTIFICATE

STATE OF OREGON)
COUNTY OF JACKSON)
I EDWARD A. MC GINTY A DULY REGISTERED SURVEYOR OF STATE OF OREGON, BEING FIRST DULY SWORN, DO HEREBY CERTIFY THAT I HAVE CORRECTLY SURVEYED AND MARKED WITH THE PROPER MONUMENTS AS PROVIDED BY LAW THE TRACT OF LAND SHOWN HEREON AND SAID PLAT IS A CORRECT REPRESENTATION OF THE SAME, AND THE FOLLOWING IS AN ACCURATE DESCRIPTION OF THE BOUNDARY LINES:
COMMENCING AT SOUTH - SOUTHWEST CORNER OF D.L.C. No. 53, TOWNSHIP 37 SOUTH, RANGE 2 WEST, WILLAMETTE MERIDIAN, JACKSON COUNTY, OREGON;
THENCE N. 89° 59' 30" W., 46.35 FEET TO CONCRETE MONUMENT 8 INS. DIAMETER, 24 INS. LONG WITH 1/2 IN. IRON PIN BEING THE INITIAL POINT; THENCE S. 0° 0' E., 54.57 FEET; THENCE S. 89° 59' W., 247.69 FEET; THENCE S. 27° 25' 15" W., 222.05 FEET; THENCE N. 64° 55' 40" W., 86.42 FEET, THENCE S. 54° 51' 30" W., 260.0 FEET; THENCE N. 35° 08' 30" W., 100.0 FEET; THENCE S. 54° 51' 30" W., 28.86 FEET; THENCE N. 35° 08' 30" W., 320.0 FEET TO THE SOUTHERLY LINE PINE STREET; THENCE ALONG SAID STREET N. 54° 51' 30" E., 66.15 FEET; THENCE S. 89° 59' 30" E., 17.37 FEET; THENCE CONTINUING ALONG THE SOUTHERLY LINE PINE STREET N. 54° 51' 30" E., 900.28 FEET TO GRIFFIN CREEK; THENCE ALONG SAID CREEK S. 11° 29' W., 82.96 FEET; S. 7° 32' E., 98.12 FEET; THENCE S. 42° 46' E., 134.88 FEET; THENCE S. 51° 33' 40" E., 13.42 FEET; THENCE S. 0° 0' E., 232.39 FEET TO THE INITIAL POINT.

SUBSCRIBED AND SWORN TO BEFORE ME THIS 24th DAY OF August 1961.

Delpha Offenhacker
NOTARY PUBLIC FOR OREGON

MY COMMISSION EXPIRES THE 25th DAY OF August 1962

I HEREBY CERTIFY THAT THIS TRACING IS AN EXACT COPY OF THE ORIGINAL PLAT FILED WITH THE COUNTY CLERK.

Edward A. McGinty
Surveyor