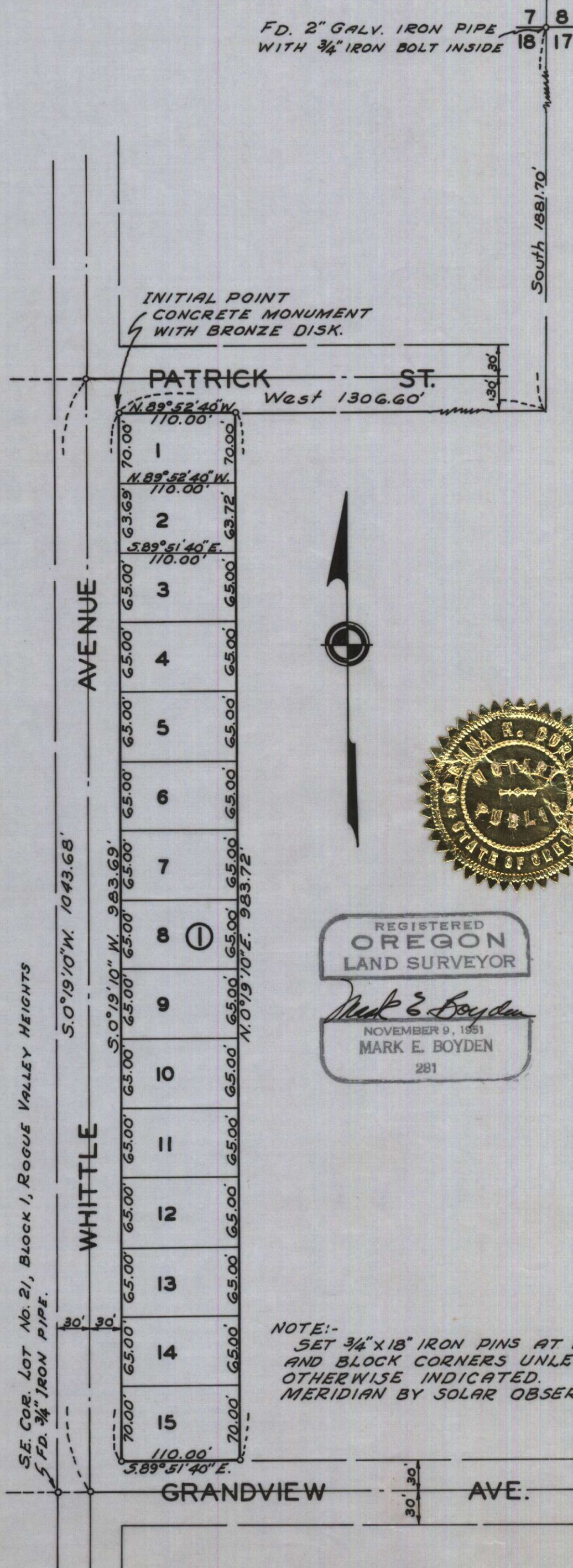


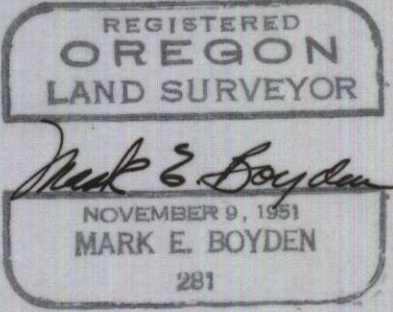
# ROGUE TERRACE - UNIT NO. 1

LOCATED IN SEC. 18, T.37S., R. 1W.W.M.  
MEDFORD, OREGON  
SCALE: 1" = 100'



FD. 2" GALV. IRON PIPE WITH 3/4" IRON BOLT INSIDE

INITIAL POINT CONCRETE MONUMENT WITH BRONZE DISK.



NOTE:-  
SET 3/4" X 18" IRON PINS AT ALL LOT AND BLOCK CORNERS UNLESS OTHERWISE INDICATED.  
MERIDIAN BY SOLAR OBSERVATION.

## DEDICATION

KNOW ALL MEN BY THESE PRESENTS, That we, Crater Land Development Co. and Rogue Valley Land Co., are Oregon Corporations, and Dwight L. Houghton, Janice G. Houghton, Harold E. Ellis and Nadene A. Ellis, are the owners in fee simple of the lands hereon described, and that we have subdivided the same into lots and block as shown hereon, and the number and size of the lots and lengths of all lines are plainly set forth, and that this plat is a correct representation of the said subdivision, and we do hereby dedicate to the public for public use all streets, shown hereon, and we do hereby designate said subdivision as, ROGUE TERRACE-UNIT No. 1.

IN WITNESS WHEREOF, we have hereunto set our hands and seals this 27<sup>th</sup> day of April, 1961.

Crater Land Development Co.  
A. Norton Smith Secretary      Homer M. Ball President

Rogue Valley Land Co.  
Dwight L. Houghton Partner      Harold E. Ellis  
Janice G. Houghton Partner      Nadene A. Ellis

STATE OF OREGON } ss.  
County of Jackson }  
April 27 A.D. 1961.

Personally appeared the above-named Homer Ball President and A. Norton Smith Secretary of Crater Land Development Co., an Oregon Corp., Robert E. McIntyre Partner of Rogue Valley Land Co., an Oregon Corp., Dwight L. Houghton, Janice G. Houghton, Harold E. Ellis and Nadene A. Ellis, and acknowledged the foregoing instrument to be their voluntary act and deed. Before me:

Glenna H. Carson  
 Notary Public for Oregon  
 My commission expires the 20<sup>th</sup> day of August, 1964.

Examined and approved by the City of Medford Planning Commission in regular session this the 26<sup>th</sup> day of September, 1961.

Attest: Joanne Simmons Secretary      Jack A. Adson President

Examined and approved this 26<sup>th</sup> day of September, 1961.

James Shorge  
 City Engineer

Examined and approved this 29<sup>th</sup> day of September, 1961.

Mad W. Hatten  
 County Assessor

All taxes paid in full to date this the 29<sup>th</sup> day of September, 1961.

Joseph D. Tolsted  
 County Sheriff

## SURVEYOR'S CERTIFICATE

STATE OF OREGON } ss.  
County of Jackson }

I, Mark E. Boyden, a duly registered surveyor of the State of Oregon, being first duly sworn, do hereby certify that I have correctly surveyed and marked with proper monuments as provided by law the tract of land hereon shown and the said plat is a correct representation of the same, and the following is an accurate description of the boundary lines: Commencing at the corner common to Sections 7, 8, 17 and 18, Township 37 South, Range 1 West, Willamette Meridian, Jackson County, Oregon; thence South 1881.70 feet and West 1306.60 feet to a concrete monument with bronze disk located on the East boundary of Whittle Avenue for the Initial Point of Beginning; thence S. 0° 19' 10" W. along the East boundary of Whittle Avenue 983.69 feet to the North boundary of Grandview Avenue; thence S. 89° 51' 40" E. along the North boundary of Grandview Avenue 110.00 feet; thence N. 0° 19' 10" E., 983.72 feet; thence N. 89° 52' 40" W. parallel with and 30.00 feet southerly at right angles from the North boundary of Lot No. 11, Block No. 2 of ROGUE VALLEY HEIGHTS, 110.00 feet to the Initial Point of Beginning.

Mark E. Boyden  
 Surveyor  
 Subscribed and sworn to before me this 26<sup>th</sup> day of April, 1961.  
Lyda L. Ship  
 Notary Public for Oregon  
 My commission expires the 23<sup>rd</sup> day of November, 1964.

Examined and approved by the Medford Irrigation District in regular session this the 2<sup>nd</sup> day of May, 1961.

Attest: J. A. Adson Secretary      Paul Culbertson President

592792

Filed for record this the 6<sup>th</sup> day of October, 1961, at 12:01 o'clock P.M. and recorded in 8 Volume of plats at page 54 of records of Jackson County, Oregon.

Wm. Adson  
 County Recorder

I hereby certify that this tracing is an exact copy of the original plat filed with the County Clerk.

Mark E. Boyden  
 Surveyor

For order of the County Court approving this plat see Volume 55, Page 10, of County Commissioners' Journal of Proceedings.

Wm. Adson  
 County Clerk