

HOMESTEAD PARK - UNIT NO. 1

LOCATED IN SEC. 11, T. 37S., R. 2W. W.M.
CENTRAL POINT, OREGON

DEDICATION

KNOW ALL MEN BY THESE PRESENTS, That we, John O. Cupp and Glades W. Cupp are the owners in fee simple of the lands hereon described, and that we have subdivided the same into lots, blocks and streets as shown hereon, and the number and size of the lots and lengths of all lines are plainly set forth, and that this plat is a correct representation of the said subdivision, and we do hereby dedicate to the public for public use all streets, shown hereon, and we do hereby designate said subdivision as, HOMESTEAD PARK - UNIT NO. 1.

IN WITNESS WHEREOF, we have hereunto set our hands and seals this 10th day of AUGUST, 1961.

John O. Cupp

Glades W. Cupp

By John O. Cupp Attorney-in-fact

STATE OF OREGON } ss.
County of Jackson }

AUGUST 10 A.D. 1961.

Personally appeared the above-named John O. Cupp and Glades W. Cupp, and acknowledged the foregoing instrument to be their voluntary act and deed. Before me:

Messine V. Martin

Notary Public for Oregon

My commission expires the 10th day of JANUARY, 1964.

Examined and approved by the City of Central Point Planning Commission in regular session this the 10th day of AUGUST, 1961.

Attest: Robert C. Ventner
Secretary

Dale L. Bartley
President

Examined and approved by the Rogue River Valley Irrigation District in regular session this the 9 day of August, 1961.

Attest: Harold W. Austin
Secretary

Otto Bohnerst
President

Examined and approved this 17th day of August, 1961.

Thad W. Hatten
County Assessor

All taxes paid in full to date this the 17th day of August, 1961.

Joseph D. Walsh
County Sheriff



SURVEYOR'S CERTIFICATE

STATE OF OREGON } ss.
County of Jackson }

I, Leland P. Lovejoy, a duly registered surveyor of the State of Oregon, being first duly sworn, do hereby certify that I have correctly surveyed and marked with proper monuments as provided by law the tract of land hereon shown and the said plat is a correct representation of the same, and the following is an accurate description of the boundary lines: Commencing at the Southwest Corner of Donation Land Claim No. 56, Township 37 South, Range 2 West, Willamette Meridian, Jackson County, Oregon; thence South 23.82 feet and West 681.76 feet to a 2" Brass Cap Monument for the Initial Point located on the South line of Hopkins Road; thence along the South line of said Hopkins Road as follows: N. 89° 57' 10" E., 34.12 feet to a point of curve, Southeasterly on the Arc of a 130.52 foot radius curve to left for 12.38 feet (Long chord bears S. 87° 09' 55" E., 12.38 feet) to a point of tangent and S. 89° 53' 00" E., 446.20 feet to the easterly line of a five (5) foot wide drainage easement; thence along said easterly line as follows: S. 16° 47' 10" W., 30.26 feet, S. 11° 54' 20" E., 172.37 feet, S. 9° 25' 30" E., 147.80 feet and S. 0° 43' 00" W., 214.66 feet; thence S. 89° 57' 10" W., 540.57 feet; thence N. 0° 43' 50" W., 560 feet to Initial Point.

Leland P. Lovejoy
Surveyor

Subscribed and sworn to before me this 9th day of AUGUST, 1961.

Ed Perkins
Notary Public for Oregon

My commission expires the 24th day of AUGUST, 1964.

Examined and recommended for approval of the County Court.

Mark E. Baerlein
County Surveyor

For order of the County Court approving this plat see Volume 54, Page 637, of County Commissioners' Journal of Proceedings.

Emm Adde
County Clerk

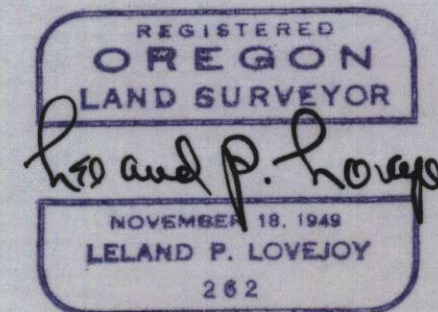
520010

Filed for record this the 25th day of August, 1961, at 4:29 o'clock P.M. and recorded in 8 Volume of plats at page 51 of records of Jackson County, Oregon.

Emm Adde
County Recorder

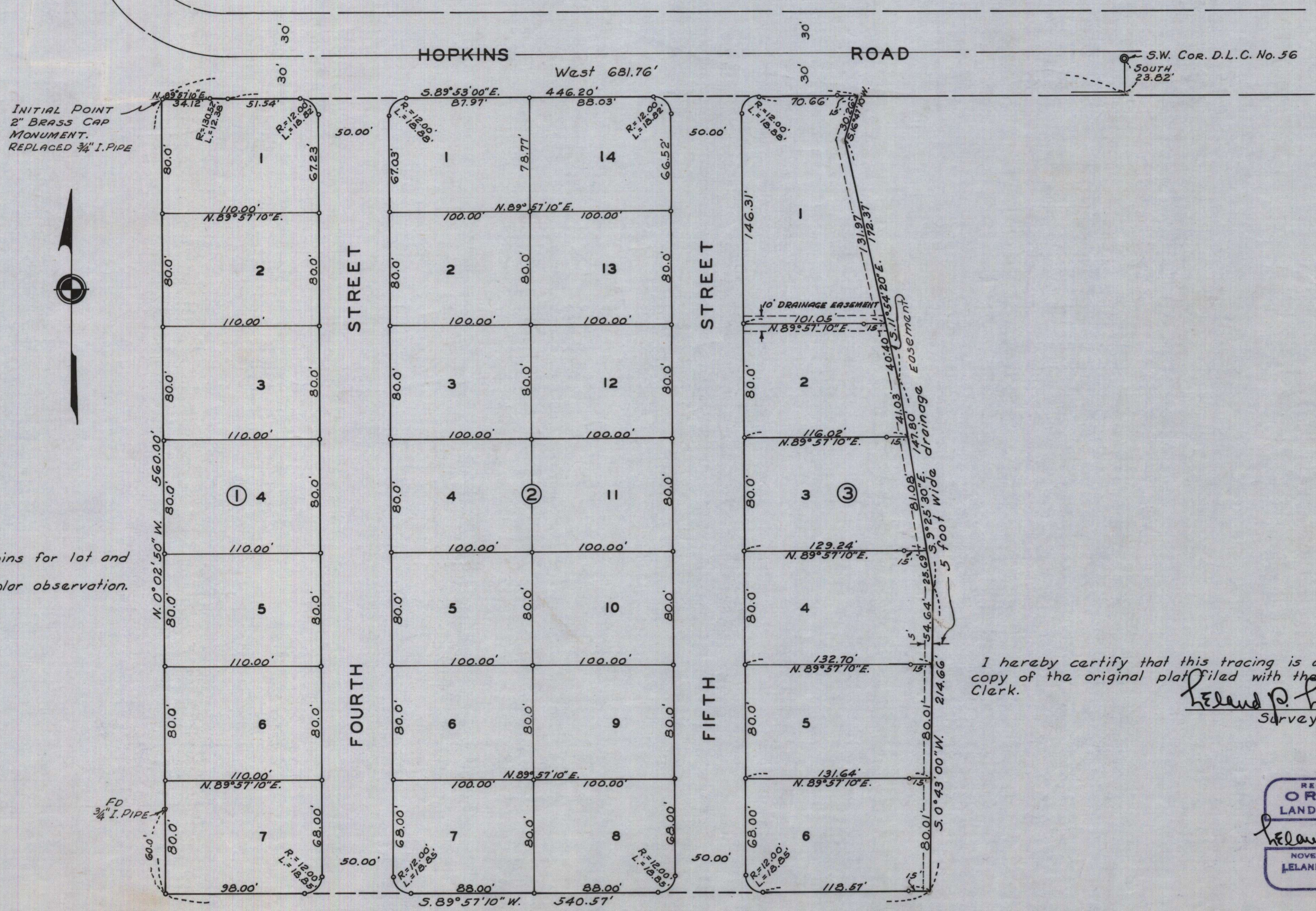
I hereby certify that this tracing is an exact copy of the original plat filed with the County Clerk.

Leland P. Lovejoy
Surveyor



HOMESTEAD PARK - UNIT NO. 1

LOCATED IN SEC. 11, T.37S., R.2W.W.M.
CENTRAL POINT, OREGON
SCALE: - 1" = 50'



INITIAL POINT
2" BRASS CAP
MONUMENT.
REPLACED 3/4" I. PIPE



NOTE:
• Set 5/8" Iron pins for lot and block corners.
Meridian by solar observation.

I hereby certify that this tracing is an exact copy of the original plat filed with the County Clerk.
Leland P. Lovejoy
Surveyor

REGISTERED
OREGON
LAND SURVEYOR

Leland P. Lovejoy

NOVEMBER 8, 1949
LELAND P. LOVEJOY
262