

GRIFFIN PARK SUBDIVISION

LOCATED IN SEC. 11, T.38 S., R.2 W., W.M.

CORNER OF
E.S.E. DLG. 46

DEDICATION

KNOWN ALL MEN BY THESE PRESENTS

THAT WE GORDON P. KERSHAW AND AUGUSTA H. KERSHAW ARE THE OWNERS IN FEE SIMPLE OF LANDS HEREON DESCRIBED AND THAT WE HAVE SUBDIVIDED THE SAME INTO LOTS, BLOCKS AND STREETS AS SHOWN HEREON AND THE NUMBER AND SIZE OF LOTS AND THE LENGTH OF ALL LINES ARE PLAINLY SET FORTH, AND THAT THIS PLAT IS A CORRECT REPRESENTATION OF THE SAID SUBDIVISION, AND WE DO HEREBY DEDICATE TO THE PUBLIC FOR PUBLIC USE ALL STREETS, AS SHOWN HEREON AND WE DO HEREBY DESIGNATE SAID SUBDIVISION AS GRIFFIN PARK SUBDIVISION.

IN WITNESS WHEREOF WE SET OUR HANDS AND SEALS THIS 14 DAY OF February 1961
Gordon P. Kershaw Augusta H. Kershaw
STATE OF OREGON)
COUNTY OF JACKSON) ss

February 14 AD. 1961
PERSONALLY APPEARED THE ABOVE NAMED GORDON P. KERSHAW AND AUGUSTA H. KERSHAW AND ACKNOWLEDGED THE FOREGOING INSTRUMENT TO BE THEIR VOLUNTARY ACT AND DEED BEFORE ME.

Mydab Neis
NOTARY PUBLIC FOR OREGON
MY COMMISSION EXPIRES THE 23rd DAY OF November 1964

EXAMINED AND APPROVED BY JACKSON COUNTY PLANNING COMMISSION IN THIS REGULAR SESSION ON 8th DAY OF March 1961

ATTEST: Daniel B. Roney SECRETARY Goagoy PRESIDENT

EXAMINED AND APPROVED BY TALENT IRRIGATION DISTRICT IN REGULAR SESSION ON THIS 3rd DAY OF JANUARY 1961

ATTEST: W. H. Hays SECRETARY Hanna Moore PRESIDENT

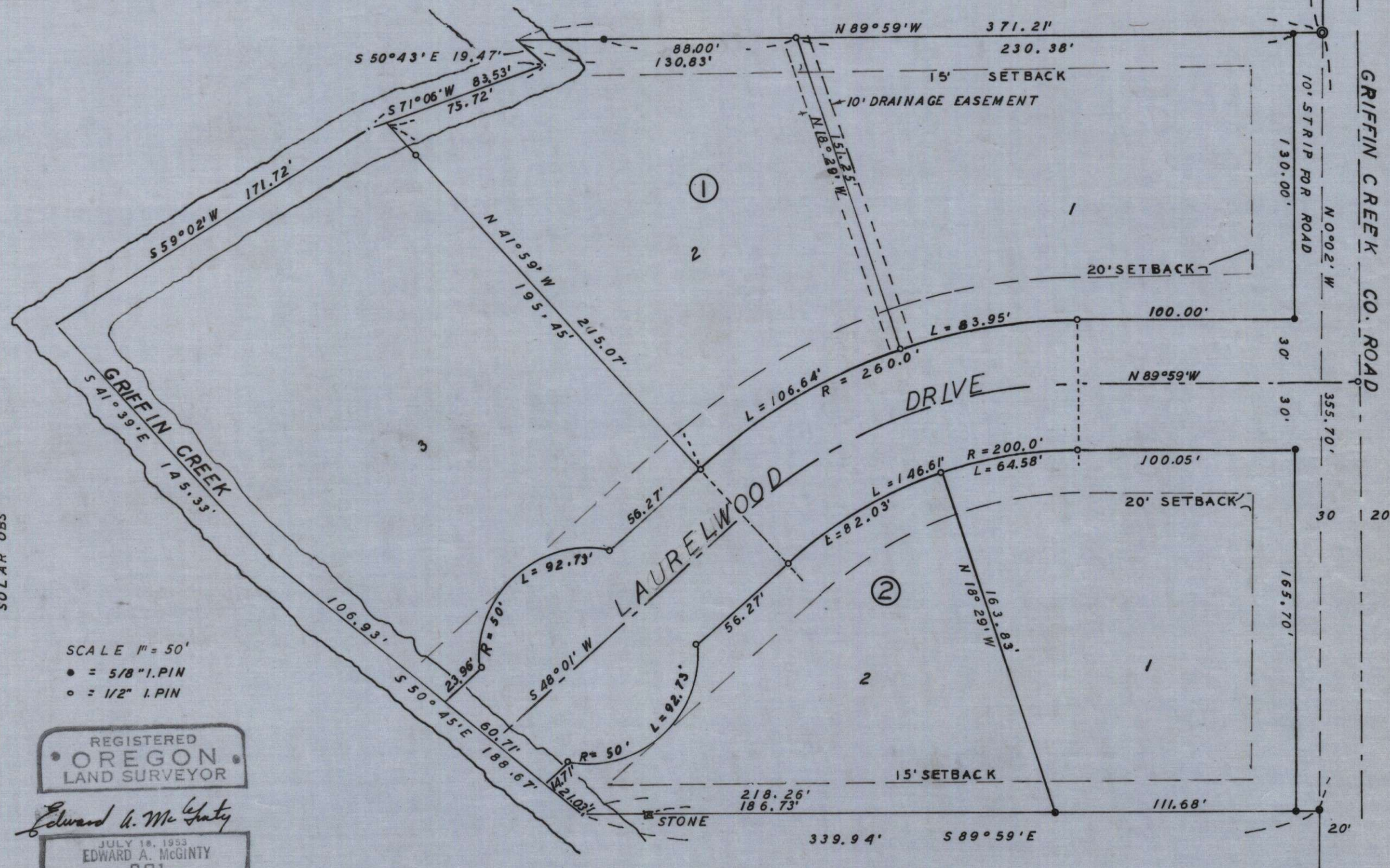
EXAMINED AND APPROVED THIS 28th DAY OF Feb. 1961
Roy Schumacher
COUNTY ASSESSOR

ALL TAXES PAID IN FULL TO DATE THIS 28th DAY OF February 1961
Joseph D. Walsh
COUNTY SHERIFF

EXAMINED AND RECOMMENDED FOR APPROVAL BY THE COUNTY COURT THIS THE 7th DAY OF MARCH 1961
Ed E. Boyden
COUNTY SURVEYOR

FOR THE ORDER OF THE COUNTY COURT APPROVING THIS PLAT SEE VOLUME 53 PAGE 432, OF COUNTY COMMISSIONER'S JOURNAL OF PROCEEDINGS.
Emmadel
COUNTY CLERK

FILES FOR RECORD THIS THE 13th DAY OF March 1961 AT 2:01 O'CLOCK P. M. AND RECORDED IN VOLUME 8 OF PLATS AT PAGE 45 OF RECORDS OF JACKSON COUNTY
Emmadel
COUNTY CLERK



SCALE 1" = 50'
• = 5/8" I.P.I.N
○ = 1/2" I.P.I.N

REGISTERED
OREGON
LAND SURVEYOR

Edward A. McGinty
JULY 18, 1953
EDWARD A. MCGINTY
301

SURVEYORS CERTIFICATE

STATE OF OREGON)
COUNTY OF JACKSON) ss
I, EDWARD A. MCGINTY A. DULY REGISTERED SURVEYOR OF STATE OF OREGON, BEING FIRST DULY SWORN DO HEREBY CERTIFY THAT I HAVE CORRECTLY SURVEYED AND MARKED WITH PROPER MONUMENTS AS PROVIDED BY LAW THE TRACT OF LAND HEREON SHOWN AND SAID PLAT IS A CORRECT REPRESENTATION OF THE SAME AND THE FOLLOWING IS AN ACCURATE DESCRIPTION OF THE BOUNDARY LINES:
COMMENCING AT EAST SOUTH EAST DLG. 46, T.38 S., R.2 W., W.M., JACKSON COUNTY, OREGON; THENCE S.89°59'E., 103.25 FEET; THENCE S.0°02' E., 674.39 FEET TO A 2" IRON PIPE BEING THE INITIAL POINT; THENCE N.89°59'W., 371.21 FEET; THENCE S.50°43'E., 19.47 FEET; THENCE S.71°06'W., 83.53 FEET; THENCE S.59°02'W., 171.72 FEET; THENCE S.41°39'E., 145.33 FEET; THENCE S.50°45'E., 188.67 FEET; THENCE S.89°59'E., 339.94 FEET; THENCE N.0°02'W., 355.70 FEET TO THE POINT OF BEGINNING.

SUBSCRIBED AND SWORN BEFORE ME THIS 10th DAY OF November 1960
Mydab Neis
NOTARY PUBLIC FOR OREGON
MY COMMISSION EXPIRES THE 23rd DAY OF November 1960
Edward A. McGinty
SURVEYOR

I HEREBY CERTIFY THAT THIS TRACING IS AN EXACT COPY OF THE ORIGINAL PLAT FILED WITH THE COUNTY CLERK

Edward A. McGinty
SURVEYOR

