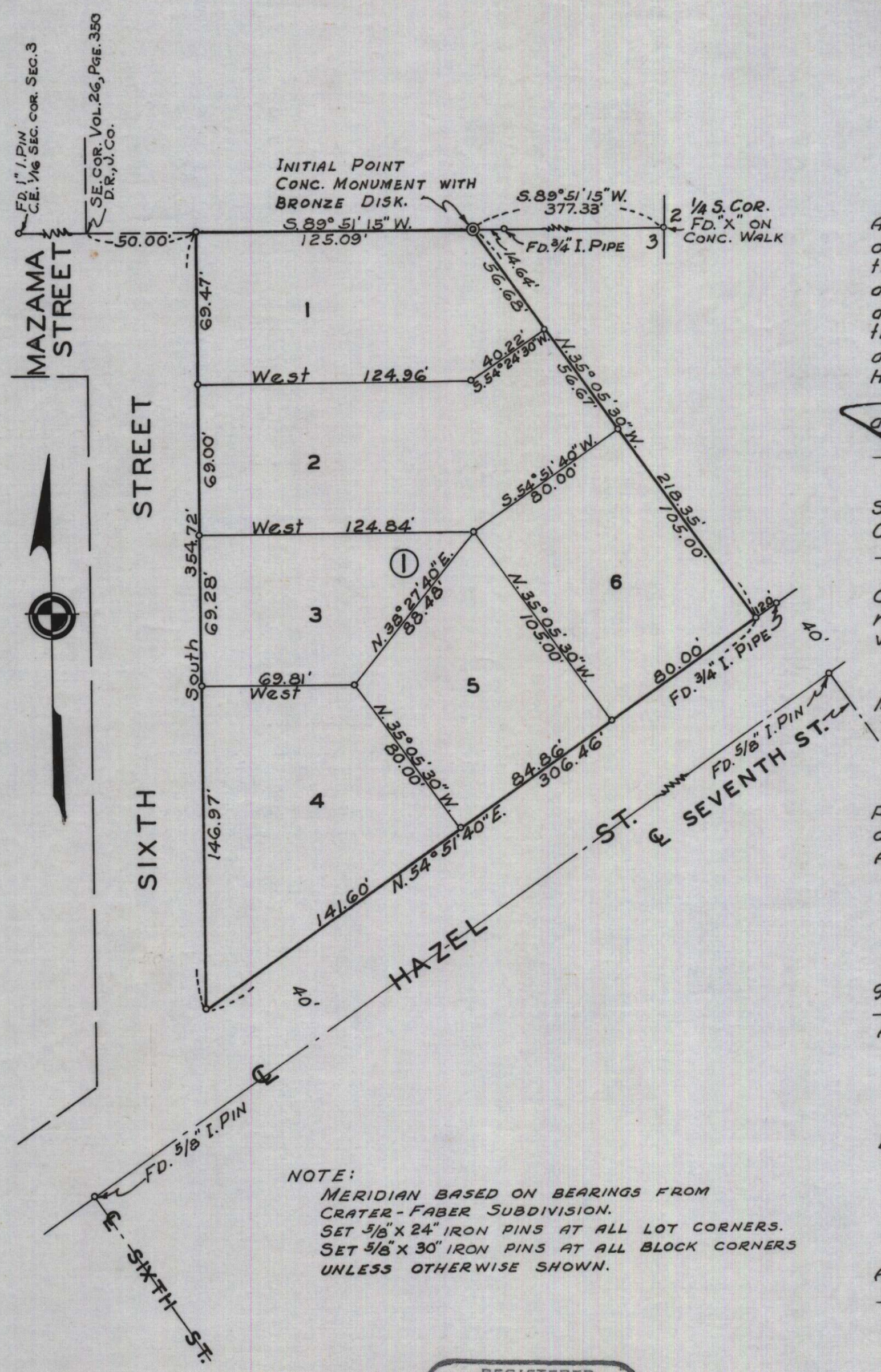


# SIERRA HEIGHTS SUBDIVISION

## LOCATED IN SEC. 3, T.37S., R.2W.W.M.

### CENTRAL POINT, OREGON

SCALE: 1" = 50'



INITIAL POINT  
CONC. MONUMENT WITH  
BRONZE DISK.  
S. 89° 51' 15" W.  
125.09'

NOTE:  
MERIDIAN BASED ON BEARINGS FROM  
CRATER-FABER SUBDIVISION.  
SET 5/8" X 24" IRON PINS AT ALL LOT CORNERS.  
SET 5/8" X 30" IRON PINS AT ALL BLOCK CORNERS  
UNLESS OTHERWISE SHOWN.

REGISTERED  
**OREGON**  
LAND SURVEYOR  
  
*Mark E. Boyden*  
NOVEMBER 9, 1951  
**MARK E. BOYDEN**  
281

### DEDICATION

KNOW ALL MEN BY THESE PRESENTS, That we, Vernon A. Capps, Darlene M. Capps and Park D. Ewing, are the owners in fee simple of the lands hereon described, and that we have subdivided the same into lots and block as shown hereon, and the number and size of the lots and lengths of all lines are plainly set forth, and that this plat is a correct representation of the said subdivision, and we do hereby designate said subdivision as, SIERRA HEIGHTS SUBDIVISION.

IN WITNESS WHEREOF, we have hereunto set our hands and seals this 21<sup>ST</sup> day of February, 1961.  
*Park D. Ewing*      *Vernon A. Capps*  
*Darlene M. Capps*

STATE OF OREGON } ss.  
County of Jackson }  
February 21 A.D. 1961.  
Personally appeared the above-named Vernon A. Capps, Darlene M. Capps and Park D. Ewing, and acknowledged the foregoing instrument to be their voluntary act and deed. Before me:  
*Betty L. Ladd*  
Notary Public for Oregon  
My commission expires the 28<sup>th</sup> day of February, 1964.

Examined and approved by the City of Central Point Planning Commission in regular session this the day of Jan 30, 1961.  
Attest: *Frank S. Bruce* Secretary      *Dale Bartley* President

Examined and approved by the Rogue River Valley Irrigation District in regular session this the 7 day of February, 1961.  
Attest: *Harold V. Lister* Secretary      *Otto Bohmert* President

Examined and approved this 28<sup>th</sup> day of Feb, 1961.  
*Ray Schumaker*  
County Assessor

All taxes paid in full to date this the 28<sup>th</sup> day of February, 1961.  
*Joseph D. Walsh*  
County Sheriff

### SURVEYOR'S CERTIFICATE

STATE OF OREGON } ss.  
County of Jackson }  
I, Mark E. Boyden, a duly registered surveyor of the State of Oregon, being first duly sworn, do hereby certify that I have correctly surveyed and marked with proper monuments as provided by law the tract of land hereon shown and the said plat is a correct representation of the same, and the following is an accurate description of the boundary lines: Commencing at the quarter corner common to Sections 2 and 3, Township 37 South, Range 2 West, Willametta Meridian, Jackson County, Oregon; thence S. 89° 51' 15" W. along the East and West centerline of said Section 3, 377.33 feet to a concrete monument with bronze disk set 6" below the surface of the ground for the Initial Point of Beginning; thence continuing S. 89° 51' 15" W., 125.09 feet; thence South 354.72 feet to intersect the northwesterly boundary of Hazel Street; thence N. 54° 51' 40" E. along said street boundary 306.46 feet; thence N. 35° 05' 30" W., 218.35 feet to the Initial Point of Beginning.

*Mark E. Boyden*  
Surveyor  
Subscribed and sworn to before me this 24<sup>th</sup> day of January, 1961.  
*Nydas Neil*  
Notary Public for Oregon  
My commission expires the 23<sup>rd</sup> day of January, 1961.

Examined and recommended for approval of the County Court.  
*Mark E. Boyden*  
County Surveyor

For order of the County Court approving this plat see Volume 53, Page 417, of County Commissioners' Journal of Proceedings.  
*Emmadel*  
County Clerk

507709  
Filed for record this the 8 day of March, 1961, at 2:56 o'clock P.M. and recorded in 8 Volume of plats at page 44 of records of Jackson County, Oregon.  
*Emmadel*  
County Recorder

I hereby certify that this tracing is an exact copy of the original plat filed with the County Clerk.  
*Mark E. Boyden*  
Surveyor