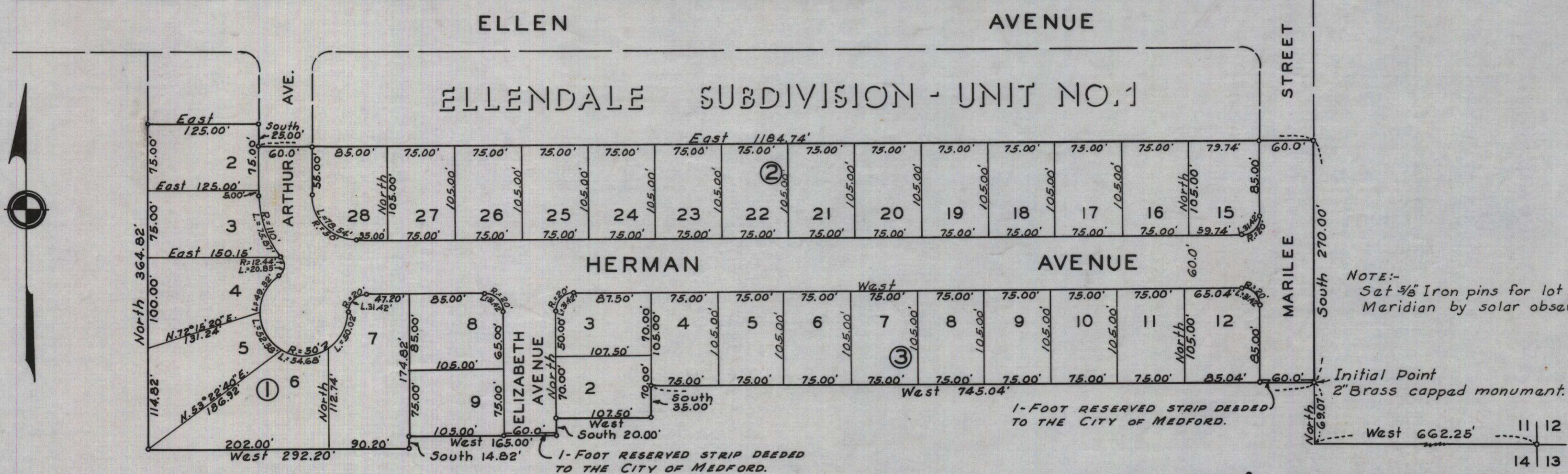


**ELLENDALE SUBDIVISION - UNIT NO.2**  
 LOCATED IN SEC. II, T.37S.,R.2W.W.M.  
**JACKSON COUNTY, OREGON**  
 SCALE: 1"=100'



**DEDICATION**

KNOW ALL MEN BY THESE PRESENTS, That we, The Dan Patch Company Inc., an Oregon Corp, are the owners in fee simple of the lands hereon described, and that we have subdivided the same into lots, blocks and streets as shown hereon, and the number and size of the lots and lengths of all lines are plainly set forth, and that this plat is a correct representation of the said subdivision, and we do hereby dedicate to the public for public use all streets, shown hereon, and we do hereby designate said subdivision as, ELLENDALE SUBDIVISION - UNIT No. 2.

IN WITNESS WHEREOF, we have hereunto set our hands and seals this 19 day of JULY, 1960.

Herman L. Ekerson Secretary  
Dan Patch President

STATE OF OREGON } ss.  
 County of Jackson }  
July 19, A.D. 1960.

Personally appeared the above-named Dan L. Patch President and Herman L. Ekerson Secretary of The Dan Patch Company Inc., an Oregon Corp., and acknowledged the foregoing instrument to be their voluntary act and deed. Before me:

W. N. MacIntosh  
 Notary Public for Oregon

My commission expires the 22 day of AUGUST, 1960.

Examined and approved by the City of Medford Planning Commission in regular session this the 1st day of Sept., 1960.  
 Attest: Francis J. Mullen Secretary  
Paul J. Seely President

Examined and approved by the Rogue River Valley Irrigation District in regular session this the 6 day of September, 1960.  
 Attest: Ronald W. Lutton Secretary  
Otto Bohm President

Examined and approved this 29th day of August, 1960.  
Samuel Shupe  
 City Engineer

Examined and approved this 8th day of Sept., 1960.  
Roy Dehman  
 County Assessor

All taxes paid in full to date this the 9th day of September, 1960.  
Joseph W. Walsh  
 County Sheriff

**SURVEYOR'S CERTIFICATE**

STATE OF OREGON } ss.  
 County of Jackson }

I, Leland P. Lovejoy, a duly registered surveyor of the State of Oregon, being first duly sworn, do hereby certify that I have correctly surveyed and marked with proper monuments as provided by law the tract of land hereon shown and the said plat is a correct representation of the same, and the following is an accurate description of the boundary lines: Commencing at the section corner common to Section 11, 12, 13 and 14, Township 37 South, Range 2 West, Willamette Meridian, Jackson County, Oregon; thence West 662.25 feet and North 69.07 feet to a 2" brass capped monument for the Initial Point; thence West 745.04 feet; thence South 35.00 feet; thence West 107.50 feet; thence South 20.00 feet; thence West 165.00 feet; thence South 14.82 feet; thence West 292.20 feet; thence North 364.82 feet to the southwest corner of Ellendale Subdivision-Unit No.1 filed with County Clerk; thence East along the south boundary of said Subdivision 125.00 feet; thence South 25.00 feet; thence East 1184.74 feet; thence South 270.00 feet to the Initial Point.

Subscribed and sworn to before me this 16 day of July, 1960.  
Leland P. Lovejoy Surveyor  
Roy Patton Notary Public for Oregon

My commission expires the 3 day of Feb., 1961.

Examined and recommended for approval of the County Court.  
 \_\_\_\_\_  
 County Surveyor

For order of the County Court approving this plat see Volume 52, Page 637, of County Commissioners' Journal of Proceedings.  
M. Madde  
 County Clerk

497324  
 Filed for record this the 12th day of September, 1960, at 3:39 o'clock P.M. and recorded in 2 Volume of plats at page 41 of records of Jackson County, Oregon.  
M. Madde  
 County Recorder

I hereby certify that this tracing is an exact copy of the original plat filed with the County Clerk.  
Leland P. Lovejoy  
 Surveyor