

# EAGLE PARK SUBDIVISION

LOCATED IN SEC. 3, T. 36S., R. 1 W.W.M.  
EAGLE POINT, OREGON

## DEDICATION

KNOW ALL MEN BY THESE PRESENTS, That we, Ray E. Barrow and Helen E. Barrow, are the owners in fee simple of the lands hereon described, and that we have subdivided the same into lots, blocks and streets as shown hereon, and the number and size of the lots and lengths of all lines are plainly set forth, and that this plat is a correct representation of the said subdivision, and we do hereby dedicate to the public for public use all streets and easements, shown hereon, and we do hereby designate said subdivision as, EAGLE PARK SUBDIVISION.

IN WITNESS WHEREOF, we have hereunto set our hands and seals this 15th day of July, 1960.

Ray E. Barrow Helen E. Barrow

STATE OF OREGON } ss.  
County of Jackson }  
July 15<sup>th</sup> A.D. 1960.

Personally appeared the above-named Ray E. Barrow and Helen E. Barrow, and acknowledged the foregoing instrument to be their voluntary act and deed. Before me:

Thelma Short  
Notary Public for Oregon

My commission expires the 8<sup>th</sup> day of June, 1964.

Examined and approved by the Eagle Point Planning Commission in regular session this the 15 day of July, 1960.

Attest: Stewart Hopper Secretary Marion H. Johnson President

Examined and approved by the Little Butte Irrigation Company in regular session this the 15 day of July, 1960.

Attest: Marion Nagel Secretary W. R. Hubbard President

Examined and approved this 27<sup>th</sup> day of July, 1960.  
Ray Ornumacher  
County Assessor

All taxes paid in full to date this the 27<sup>th</sup> day of July, 1960.  
Joseph D. Wald  
County Sheriff

## SURVEYOR'S CERTIFICATE

STATE OF OREGON } ss.  
County of Jackson }

I, Mark E. Boyden, a duly registered surveyor of the State of Oregon, being first duly sworn, do hereby certify that I have correctly surveyed and marked with proper monuments as provided by law the tract of land hereon shown and the said plat is a correct representation of the same, and the following is an accurate description of the boundary lines: Commencing at the northeast corner of Donation Land Claim No. 46, Township 36 South, Range 1 West, Willamette Meridian, Jackson County, Oregon; thence N. 82° 13' W, 75.17 feet to a concrete monument with bronze disk for the initial point of beginning; thence N. 64° 37' 30" W. to and along the southwesterly boundary of Seventh Street (formerly Park Avenue in Central Addition to the Town of Eagle Point) and the northeasterly boundary of Lot No. 6 of Block No. 12 of said Addition 673.97 feet to the most-northerly corner of said Lot No. 6; thence S. 19° 18' 50" W. along the northwesterly boundary of said Lot 317.35 feet to intersect the north boundary of said Claim No. 46; thence N. 89° 57' 50" E. along the north boundary of said Claim 288.11 feet to an intersection with the northwesterly boundary of Block No. 1 of J.J. Fryer's Division of Eagle Point; thence S. 47° 24' W, 210.69 feet to the most-westerly corner of said Block No. 1; thence S. 42° 36' E., 280.50 feet to the most-southerly corner of said Block No. 1; thence N. 47° 24' E. along the southeasterly boundary of said Block No. 1 and the northeasterly projection thereof 531.24 feet to the initial point of beginning.

Mark E. Boyden  
Surveyor

Subscribed and sworn to before me this 12<sup>th</sup> day of July, 1960.

Myrtle Neil  
Notary Public for Oregon

My commission expires the 29<sup>th</sup> day of November, 1962.

Examined and recommended for approval of the County Court.

Paul B. Cunningham  
County Surveyor

For order of the County Court approving this plat see Volume 52, Page 609, of County Commissioners' Journal of Proceedings.

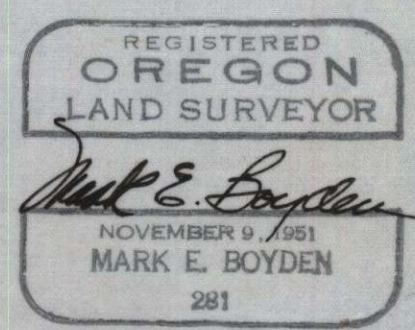
E. M. Madden  
County Clerk  
By Thelma C. McIntyre  
Deputy

496015  
Filed for record this the 23 day of August, 1960, at 3:35 o'clock P.M. and recorded in 8 Volume of plats at page 37 of records, of Jackson County, Oregon.

E. M. Madden  
County Recorder  
By Thelma C. McIntyre  
Deputy

I hereby certify that this tracing is an exact copy of the original plat filed with the County Clerk.

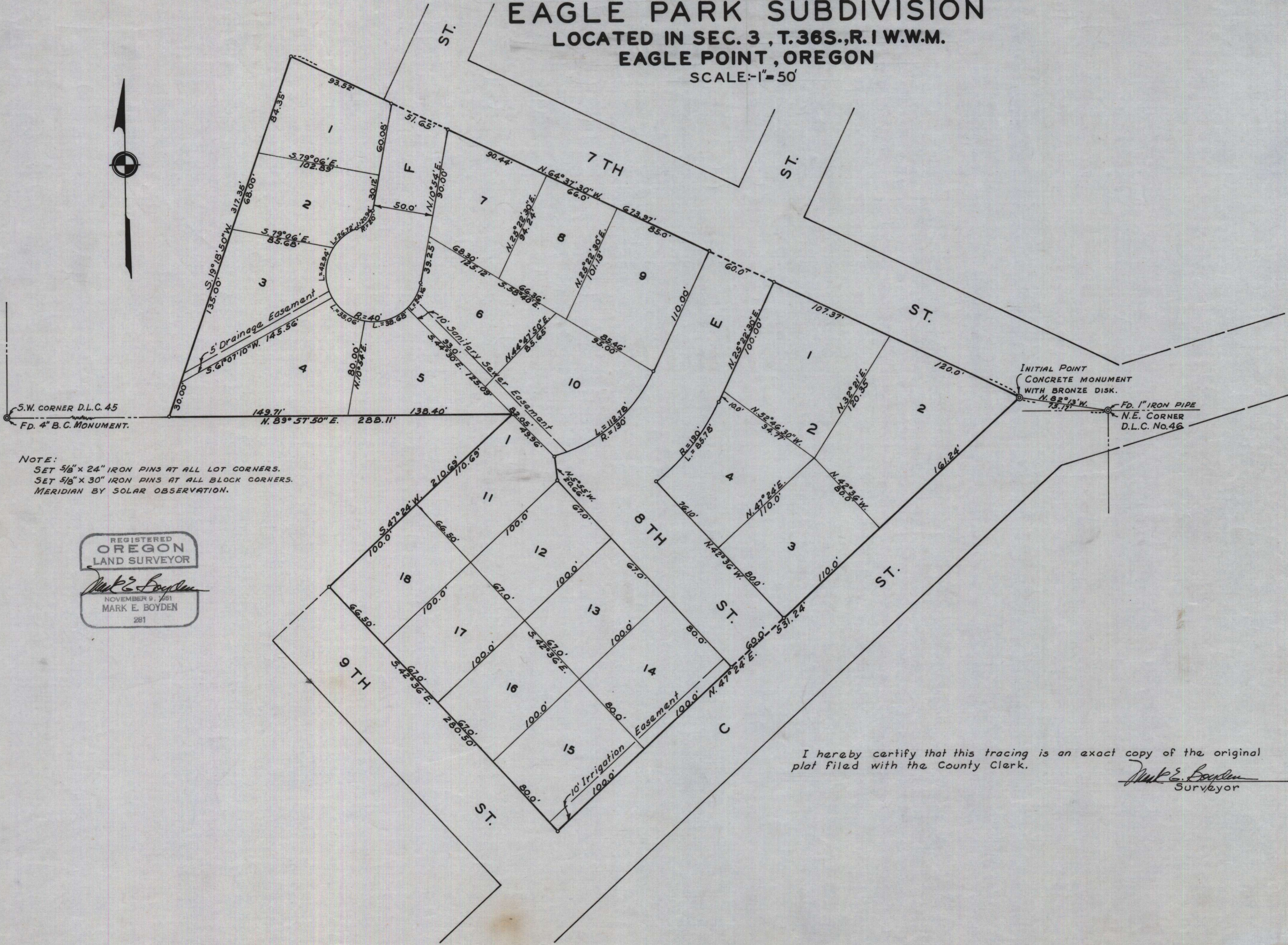
Mark E. Boyden  
Surveyor





# EAGLE PARK SUBDIVISION

LOCATED IN SEC. 3, T.36S., R.1 W.W.M.  
EAGLE POINT, OREGON  
SCALE: 1" = 50'



S.W. CORNER D.L.C. 45  
FD. 4" B.C. MONUMENT.

INITIAL POINT  
CONCRETE MONUMENT  
WITH BRONZE DISK.  
FD. 1" IRON PIPE  
N.E. CORNER  
D.L.C. No. 46

NOTE:  
SET 5/8" x 24" IRON PINS AT ALL LOT CORNERS.  
SET 5/8" x 30" IRON PINS AT ALL BLOCK CORNERS.  
MERIDIAN BY SOLAR OBSERVATION.

REGISTERED  
OREGON  
LAND SURVEYOR  
*Mark E. Boyden*  
NOVEMBER 9, 1951  
MARK E. BOYDEN  
281

I hereby certify that this tracing is an exact copy of the original plat filed with the County Clerk.

*Mark E. Boyden*  
Surveyor