

# WELDON SUBDIVISION LOCATED IN SEC. 23, T. 37S., R. 2W.W.M. JACKSON COUNTY, OREGON

N.E. cor. D.L.C. No. 73  
FD. 1 1/2" Iron Pipe

## DEDICATION

KNOW ALL MEN BY THESE PRESENTS, That we, Donald E. Harriad, Joan M. Harriad, Frona Vilas, George W. Vilas, Joe E. Brooks, Frances M. Brooks, Armin C. Richter and Ruth P. Richter, are the owners in fee simple of the lands hereon described, and that we have subdivided the same into lots, blocks and streets as shown hereon, and the number and size of the lots and lengths of all lines are plainly set forth, and that this plat is a correct representation of the said subdivision, and we do hereby dedicate to the public for public use all streets, shown hereon, and we do hereby designate said subdivision as, WELDON SUBDIVISION.

IN WITNESS WHEREOF, we have hereunto set our hands and seals this 24 day of April, 1962.

Joe E. Brooks  
Frances M. Brooks  
Armin C. Richter  
Ruth P. Richter  
Donald E. Harriad  
Joan M. Harriad  
Frona Vilas  
George W. Vilas

STATE OF OREGON } ss.  
County of Jackson }

Personally appeared the above-named, Donald E. Harriad, Joan M. Harriad, Frona Vilas, George W. Vilas, Joe E. Brooks, Frances M. Brooks, Armin C. Richter and Ruth P. Richter, and acknowledged the foregoing instrument to be their voluntary act and deed. Before me:

Robert A. Boyer  
Notary Public for Oregon

My commission expires the 2nd day of March, 1962.

## SURVEYOR'S CERTIFICATE

STATE OF OREGON } ss.  
County of Jackson }

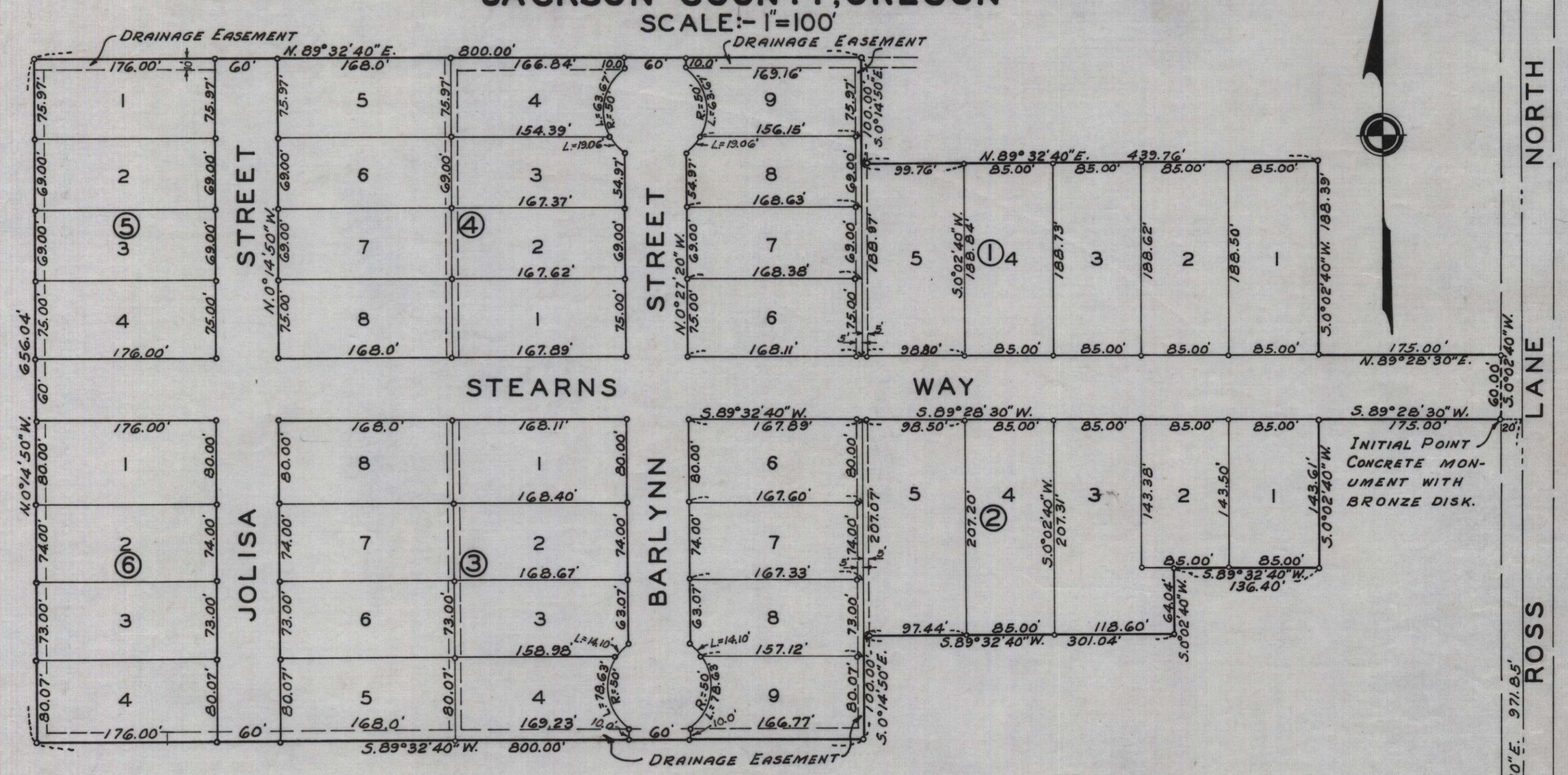
I, Mark E. Boyden, a duly registered surveyor of the State of Oregon, being first duly sworn, do hereby certify that I have correctly surveyed and marked with proper monuments as provided by law the tract of land hereon shown and the said plat is a correct representation of the same, and the following is an accurate description of the boundary lines: Commencing at the Southeast corner of Donation Land Claim No. 73, Township 37 South, Range 2 West, Willamette Meridian, Jackson County, Oregon; thence N.0°02'40"E. along the East boundary of said Claim 971.85 feet; thence S.89°28'30"W., 20.00 feet to a 6"x6"x24" concrete monument with bronze disk located on the West boundary of Ross Lane North for the initial point of beginning; thence S.89°28'30"W. along the South boundary of Stearns Way (as the same was found to be monumented) 175.00 feet; thence S.0°02'40"W., 143.61 feet; thence S.89°32'40"W., parallel with the South boundary of said Claim 136.40 feet; thence S.0°02'40"W., 64.04 feet; thence S.89°32'40"W., 301.04 feet; thence S.0°14'50"E., 100.00 feet; thence S.89°32'40"W., 800.00 feet; thence N.0°14'50"W., 656.04 feet; thence N.89°32'40"E., 800.00 feet; thence S.0°14'50"E., 100.00 feet; thence N.89°32'40"E., 439.76 feet; thence S.0°02'40"W., 188.39 feet; thence N.89°28'30"E., 175.00 feet to the West boundary of Ross Lane North; thence S.0°02'40"W., 60.00 feet to the initial point of beginning.

Subscribed and sworn to before me this 4th day of April, 1962.

My commission expires the 29th day of November, 1962.

Examined and approved by the Jackson County Planning Commission in regular session this the 11th day of May, 1962.  
Attest: Robert A. Boyer Secretary Ronald M. James President

Examined and approved by the Medford Irrigation District in regular session this the 5th day of April, 1962.  
Attest: J. G. H. ... Secretary Paul Culbertson President



NOTE:-  
Set 3/8"x24" iron pins at all lot corners or witness corners  
Set 5/8"x30" iron pins at all block corners.  
Meridian was derived from the City Plane Coordinate System, corrected to true meridian.

NOTE:-  
All drainage easements shown hereon are 10' wide and can be also used for irrigation purposes.

Examined and approved this 11th day of April, 1962.  
Ray Schumaker  
County Assessor

All taxes paid in full to date this the 11th day of April, 1962.  
Joseph D. Walsh  
County Sheriff

Examined and recommended for approval of the County Court.  
Paul D. ...  
County Surveyor

For order of the County Court approving this plat see Volume 52 Page 173, of County Commissioners' Journal of Proceedings. C. M. Madh  
County Clerk

Filed for record this 24 day of May, 1962, at 3:52 o'clock P.M. and recorded in 2 Volume of plats at Page 34 of records of Jackson County, Oregon.  
C. M. Madh  
County Recorder

I hereby certify that this tracing is an exact copy of the original plat filed with the County Clerk.  
Mark E. Boyden  
Surveyor

THORN-OAK DR.

S.E. cor. D.L.C. No. 73  
FD. 1 1/2" IRON PIPE

