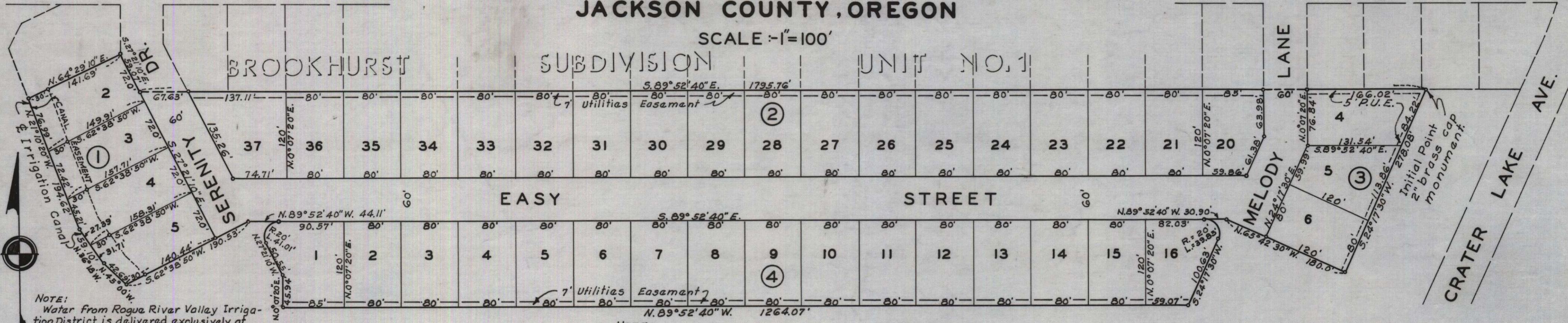


# BROOKHURST SUBDIVISION UNIT NO.2 LOCATED IN SECTION 18, T.37S.,R.1W.W.M. JACKSON COUNTY, OREGON



NOTE:  
Water from Rogue River Valley Irrigation District is delivered exclusively at present point of delivery, being a point where said canal or lateral crosses at or near the common line to Sec's 18 & 19, T.37S., R.1W.W.M. and near a natural draw.

NOTE:  
5/8" Iron pins at all lot and block corners.  
Meridian by solar observation.

### DEDICATION

KNOW ALL MEN BY THESE PRESENTS, That we, Homasites, Inc., an Oregon Corp., are the owners in fee simple of the lands hereon described, and that we have subdivided the same into lots, blocks and streets as shown hereon, and the number and size of the lots and lengths of all lines are plainly set forth, and that this plat is a correct representation of the said subdivision, and we do hereby dedicate to the public for public use all streets and utility easements, shown hereon, and we do hereby designate said subdivision as, BROOKHURST SUBDIVISION UNIT No. 2.

IN WITNESS WHEREOF, we have hereunto set our hands and seals this 6<sup>th</sup> day of February, 1959.

Clifford E. Lewis Homasites, Inc. Secretary  
Roy P. Wilkes President

STATE OF OREGON } ss.  
County of Jackson }  
February 6 A.D. 1959.

Personally appeared the above-named Roy P. Wilkes President and Clifford E. Lewis Secretary of Homasites, Inc., an Oregon Corp., and acknowledged the foregoing instrument to be their voluntary act and deed. Before me:

Clifford B. Collins  
Notary Public for Oregon

My commission expires the 14<sup>th</sup> day of October, 1959.

Examined and approved by the City of Medford Planning Commission in regular session this the 12<sup>th</sup> day of February, 1959.  
Attest: Narothy Smedden Secretary, Paul J. Sallee President

Examined and approved by the Rogue River Valley Irrigation District in regular session this the 4<sup>th</sup> day of August, 1952.  
Attest: Ronald W. Austin Secretary, Otto Bohnert President

Examined and approved this 12<sup>th</sup> day of February, 1959.  
Simon Shupe  
City Engineer

Examined and approved this 3<sup>rd</sup> day of Sept, 1959.  
Roy J. Schumacher  
County Assessor  
By Edna Jennings, Chief Deputy

All taxes paid in full to date this the 3<sup>rd</sup> day of Sept, 1959.  
Joseph S. Walsh  
County Sheriff

### SURVEYOR'S CERTIFICATE

STATE OF OREGON } ss.  
County of Jackson }  
I, Leland P. Lovajoy, a duly registered surveyor of the State of Oregon, being first duly sworn, do hereby certify that I have correctly surveyed and marked with proper monuments as provided by law the tract of land hereon shown and the said plat is a correct representation of the same, and the following is an accurate description of the boundary lines: Commencing at the Southeast corner of Donation Land Claim No. 39, Township 37 South, Range 1 West, Willamette Meridian, Jackson County, Oregon; thence North 188.77 feet and East 2387.20 feet to a 2" brass cap monument on the south line of Brookhurst Subdivision - Unit No. 1 for the Initial Point; thence South 24°17'30" West, 278.08 feet; thence North 65°42'30" West, 180.00 feet; thence North 89°52'40" West, 30.90 feet; thence along the arc of a 20.0 foot radius curve to the southeast 39.85 feet (the long chord of which curve bears South 32°47'35" East, 33.58 feet); thence South 24°17'30" West, 100.63 feet; thence North 89°52'40" West, 1264.07 feet; thence North 0°07'20" East, 45.94 feet; thence North 27°21'10" West, 50.55 feet; thence along the arc of a 20.0 foot radius curve to the right 41.01 feet (the long chord of which curve bears North 31°23'05" East, 34.19 feet); thence North 89°52'40" West, 44.11 feet; thence South 62°38'50" West, 190.53 feet to the centerline of the Rogue River Valley Irrigation Canal; thence along centerline of said canal as follows: North 45°00' West, 42.69 feet; North 36°18' West, 59.10 feet; North 21°10'20" West, 194.62 feet to the south line of Brookhurst Subdivision - Unit No. 1; thence North 64°29'10" East along said south line 141.69 feet; thence South 27°21'10" East, 59.07 feet; thence South 89°52'40" East, 1795.76 feet to the Initial Point.

Subscribed and sworn to before me this 6<sup>th</sup> day of February, 1959.  
Leland P. Lovajoy Surveyor  
Roy Patton Notary Public for Oregon

My commission expires the 3<sup>rd</sup> day of February, 1961.  
Examined and recommended for approval of the County Court.  
Paul B. Lymning County Surveyor

For order of the County Court approving this plat see Volume 51, Page 85, of County Commissioners' Journal of Proceedings.  
477926  
E.M. Madd County Clerk

Filed for record this the 3<sup>rd</sup> day of November, 1959, at 10:39 o'clock A.M. and recorded in 8 Volume of plats at page 31 of records of Jackson County, Oregon.  
E.M. Madd County Recorder

I hereby certify that this tracing is an exact copy of the original plat filed with the County Clerk.  
Leland P. Lovajoy Surveyor

