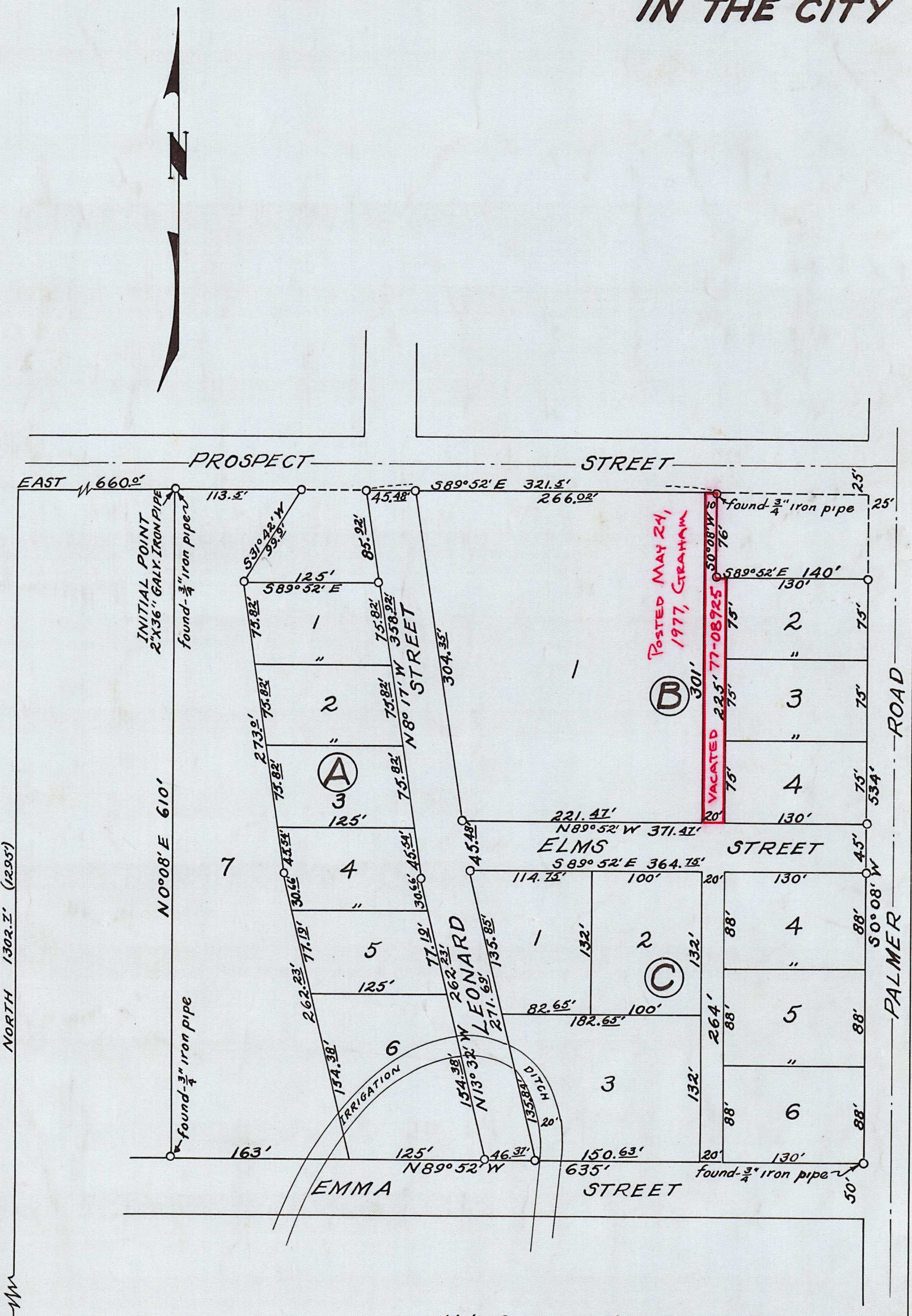


# HILLTOP SUBDIVISION

## IN THE CITY OF ASHLAND, JACKSON COUNTY, OREGON

SCALE: 1" = 100'



1" Iron Pipe - 30" deep  
 QUARTER CORNER COMMON  
 TO SECTIONS 15 and 16  
 T.39S. R.1E. W.M.

Note: Bearings by Solar Observation  
 Iron pipes set at all lot  
 and block corners.

### DEDICATION

KNOW ALL MEN BY THESE PRESENTS, That we, Herbert E. Specht and Dorothy F. Specht, are the owners in fee simple of the lands hereon described, and that we have subdivided the same into lots, blocks, and streets as shown hereon, and the number and size of the lots and the lengths of all lines are plainly set forth, and that this plat is a correct representation of the said subdivision, and we do hereby dedicate to the public for public use all streets shown hereon, and we do hereby designate said subdivision as: Hilltop Subdivision.

IN WITNESS WHEREOF we have hereunto set our hands and seals this 30<sup>th</sup> day of July 1959

Erwin J. Wilkinson, Witness Herbert E. Specht  
 Mary M. McLaughlin, Witness Dorothy F. Specht  
 STATE OF OREGON } ss. Mary M. McLaughlin  
 County of Jackson }  
 July 30 A.D. 1959.

Personally appeared the above named Herbert E. Specht and Dorothy F. Specht and acknowledged the foregoing instrument to be their voluntary act and deed, Before me:

Annabelle Harmon  
 Notary Public for Oregon  
 My commission expires the 14<sup>th</sup> day of Sept 1956

Examined and approved by the City of Ashland Planning Commission in regular session this the 4<sup>th</sup> day of May 1959  
 Attest: W. P. Wright Secretary N. J. Baratti President

Examined and approved by the Talent Irrigation District in regular session this the \_\_\_ day of 195\_\_  
 Attest: \_\_\_\_\_ Secretary \_\_\_\_\_ President

Examined and approved for the City of Ashland  
E. C. Beigel  
 City Engineer

Examined and approved this 3<sup>rd</sup> day of Aug. 1959.  
Ray DeLumacher  
 County Assessor

All taxes paid in full to date this the 3<sup>rd</sup> day of August 1959.  
Joseph D. Walsh  
 County Sheriff

### SURVEYOR'S CERTIFICATE

STATE OF OREGON } ss.  
 COUNTY of JACKSON }  
 I, H.B. Brown, a duly registered civil engineer of the State of Oregon, being first duly sworn, do hereby certify that I have correctly surveyed and marked with proper monuments as provided by law, the tract of land hereon shown and the said plat is a correct representation of the same, and the following is an accurate description of the boundary lines of the subdivision:

Beginning at a 2"x36" galvanized iron pipe set six inches below the surface of the ground for the Initial point, said point being on the South line of Prospect Street, in the City of Ashland, Jackson County, Oregon, from which the Quarter corner common to Sections 15 and 16, T.39S., R.1E., W.M., Oregon bears West 660.2 feet and South 1302.2 feet; thence, S89°52'E 113.5 feet; thence, S31°42'W 99.2 feet; thence, S89°52'E 125.2 feet; thence, N 8°17'W 85.23 feet; thence, S89°52'E 321.5 feet; thence, S0°08'W 76.2 feet; thence, S89°52'E 140.2 feet, to a point on the West line of Palmer Road; thence, S0°08'W along said Road 534.2 feet to an intersection with the North line of Emma Street; thence, along said Street N89°52'W 635.2 feet; thence, N0°08'E 610.2 feet to the point of beginning.

Horace B. Brown  
 Engineer

Subscribed and sworn to before me this 30<sup>th</sup> day of July 1959  
C. H. Dingler  
 Notary Public for Oregon  
 My commission expires the 13<sup>th</sup> day of Feb 1953

Examined and recommended for approval of the County Court.  
Paul D. Rynning  
 County Surveyor

For order of the County Court approving this plat see Volume 50, Page 539, of the County Commissioner's Journal of Proceedings.  
E. M. Madde  
 County Clerk

473964  
 Filed for record this the 27 day of August 1959 at 4:54 o'clock P.M. and recorded in Volume 8 of plats at page 29 of records of Jackson, County, Oregon.

E. M. Madde  
 County Recorder

I hereby certify that this tracing is an exact copy of the original plat filed with the County Clerk.  
Horace B. Brown  
 Engineer

