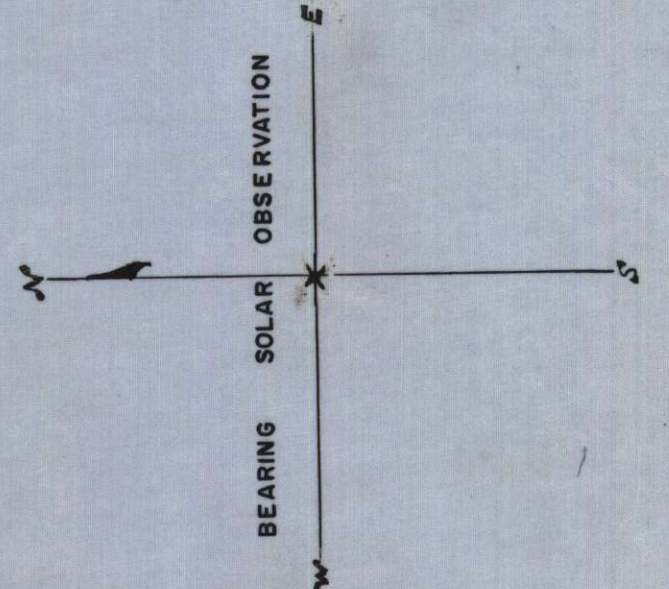
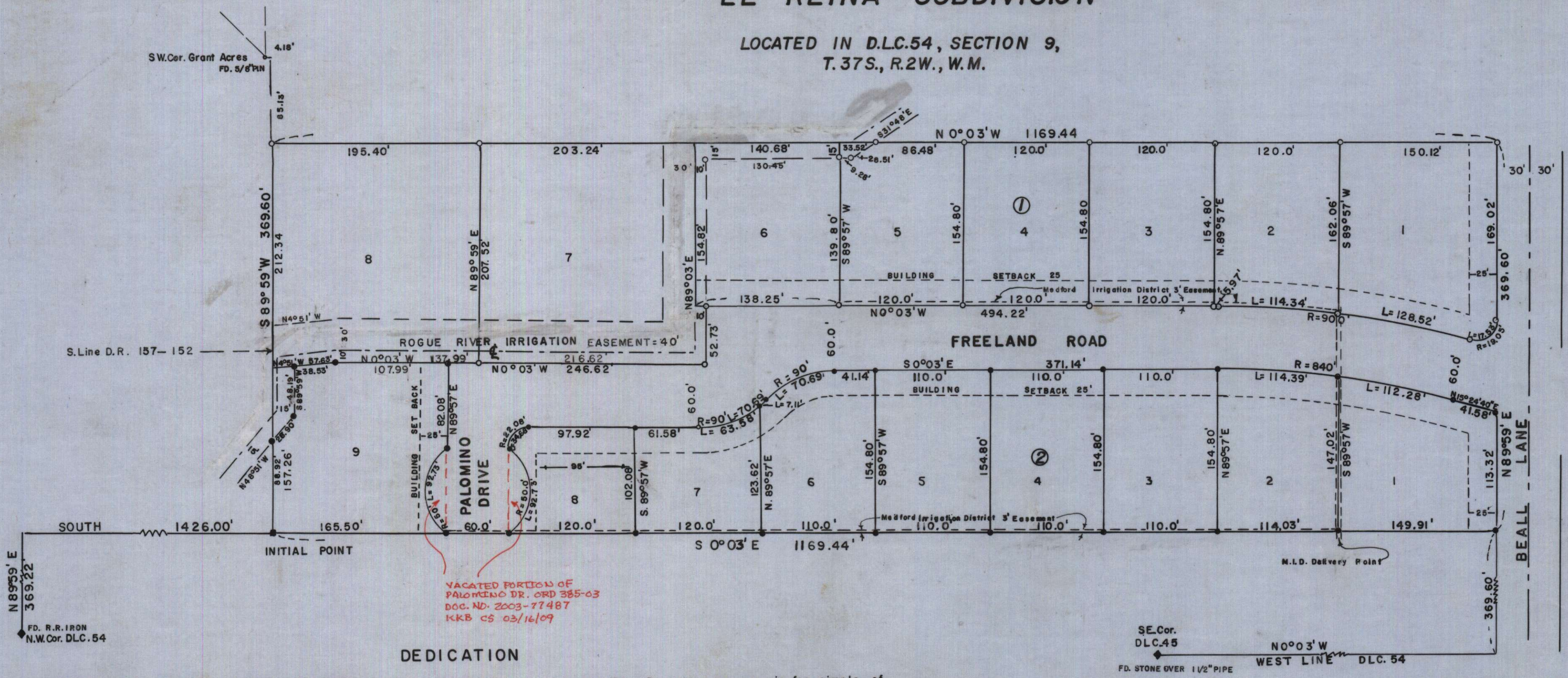


EL-REINA SUBDIVISION

LOCATED IN D.L.C.54, SECTION 9,
T.37S., R.2W., W.M.



SCALE 1" = 80'
 ○ = 3/4" I. PIPE
 ● = 1/2" I. PIN

REGISTERED
 OREGON
 LAND SURVEYOR
 Edward A. McGinty
 JULY 10, 1953
 EDWARD A. MCGINTY
 301

DEDICATION

KNOWN ALL MEN BY THESE PRESENTS, That we Robert Russell and Virginia Russell are owners in fee simple of the lands hereon described, and that we have subdivided the same into lots, blocks and streets as shown hereon and the number and size of lots and the lengths of all lines are plainly set forth, and that this plat is a correct representation of the said subdivision, and we do hereby dedicate to the public for public use all streets, shown hereon and we do hereby designate said subdivision as EL-REINA SUBDIVISION.

IN WITNESS WHEREOF we have hereunto set our hands and seals this 20 day of May, 1959.

STATE OF OREGON)
 COUNTY OF JACKSON)
 Robert Russell
 Virginia Russell

May 20, A.D. 1959
 Personally appeared the above-named, Robert Russell and Virginia Russell and acknowledged the foregoing instrument to be their voluntary act and deed. Before me.

My commission expires the 29 day of July, 1959

Examined and approved by the Central Point Planning Commission in this regular session this the 25 day of May, 1959
 Attest: John L. Smack Secretary Dale Barthel President

Examined and approved by the Rogue River Valley Irrigation District in regular session this the 7th day of June, 1959
 Attest: Donald W. Sutton Secretary Otto Bohner President

Examined and approved by the Medford Irrigation District in regular session this the 2nd day of June, 1959
 Attest: J. A. H. Phillips Secretary Paul C. Peterson President

Examined and approved this 1th day of July, 1959
Ray Schumacher
 County Assessor

All taxes paid in full to date this 22nd day of June, 1959
Joseph D. Walsh
 County Sheriff

Examined and recommended for the approval of the County Court
Paul D. Manning
 County Surveyor

SURVEYOR'S CERTIFICATE

STATE OF OREGON)
 COUNTY OF JACKSON)
 I, Edward A. McGinty, a duly registered surveyor of the State of Oregon, being first duly sworn, do hereby certify that I have correctly surveyed and marked with proper monuments as provided by law the tract of land hereon shown and the said plat is a correct representation of the same and the following is an accurate description of the boundary lines; Commencing at the northwest corner of Donation Land Claim No. 54, Township 37 South, Range 2 West, Willamette Meridian, Jackson County, Oregon; thence N 89° 59' E. 369.22 feet; thence South 1426.00 feet to the initial point, being a concrete monument with a bronze disc; thence S 0° 03' E. 1169.44 feet; thence N. 89° 59' E. along the North line of Beall Lane 369.60 feet; thence N. 0° 03' W. 1169.44 feet; thence S. 89° 59' W. 369.60 feet to the Initial Point.

Edward A. McGinty
 Surveyor

Subscribed and sworn before me this 19th day of May, 1959.

Myrtle Neil
 Notary Public for Oregon

My commission expires the 23rd day of November, 1960.

For order of the County Court approving this plat see Volume 50, Page 411 of County Commissioner's Journal of Proceedings.

E. M. Madde
 County Clerk

471776
 Filed for record this 23 day of July, 1959, at _____ o'clock _____ and recorded in # 8 Volume of Plats pg. 28 of records of Jackson County Oregon.

I hereby certify that this tracing is an exact copy of the original plat filed with the County Clerk.

Edward A. McGinty
 Surveyor