

ROYAL HEIGHTS

A RE-SUBDIVISION OF PART OF LOTS 5 & 6 AMY'S COTTAGE ADDITION To CENTRAL POINT, JACKSON COUNTY, OREGON.

DEDICATION

KNOW ALL MEN BY THESE PRESENTS, That we N.A. MEAD and Rachel M. Mead, are the owners in fee simple of the lands hereon described, and that we have subdivided the same into lots, blocks and streets as shown hereon, and the number and size of the lots and lengths of all lines are plainly set forth, and that this plat is a correct representation of the said subdivision, and we do hereby dedicate to the public for public use all streets and alleys and easements for public utilities, shown hereon, and we do hereby designate said subdivision as ROYAL HEIGHTS.

IN WITNESS WHEREOF we have hereunto set our hands and seals this 28 day of Jan 1959

N.A. Mead WITNESS *N.A. Mead*
Rachel M. Mead WITNESS *Rachel M. Mead*

SEAL
SEAL

STATE OF OREGON)
COUNTY OF JACKSON) s.s.
January 28 A.D. 1959

Personally appeared the above named N.A. Mead and Rachel M. Mead and acknowledged the foregoing instrument to be their voluntary act and deed. Before me:

Stewart Dallaire
NOTARY PUBLIC FOR OREGON.

My commission expires the 15th day of September, 1962

SURVEYOR'S CERTIFICATE

STATE OF OREGON)
COUNTY OF JACKSON) s.s.

I, L.N. Dow, a duly registered surveyor of the State of Oregon, being first duly sworn do hereby certify that I have correctly surveyed and marked with proper monuments as provided by law the tract of land hereon shown and the said plat is a correct representation of the same, and the following is an accurate description of the boundary lines: Beginning at a concrete monument with lead tablet set six inches below the surface of the ground on the west line of Upton Road at a point N0°16'W, 648.00 feet from the east 1/16th corner on the east-west centerline of Section 3, said 1/16th corner being S89°53'50" W 1330.9 feet from the 1/4 Section corner on the east line of Section 3, Township 37 South, Range 2 West, Willamette Meridian, Jackson County, Oregon; thence S0°16'E along the west line of Upton Road 648.00 feet to the east 1/16th corner on the east-west centerline of Section 3, thence S89°53'50" W 762.00 feet, thence N0°16' W 648.00 feet, thence N89°53'50" E 762.00 feet to the point of beginning.

L.N. Dow
SURVEYOR

Subscribed and sworn to before me this 26 day of January, 1959

John C. Smith
NOTARY PUBLIC FOR OREGON

My commission expires the 6th day of September, 1960

Examined and approved by the City of Central Point Planning Commission in regular session this the 28th day of January, 1959

Attest: *John H. Smock*
SECRETARY

Dale Bartley
PRESIDENT

Examined and approved by the Rogue River Valley Irrigation District in regular session this the 6 day of February, 1959

Attest: *Harold W. Sexton*
SECRETARY

Otto Bohmert
PRESIDENT

Examined and approved this 13th day of Feb., 1959

Ray Schumacher
COUNTY ASSESSOR

All taxes paid in full to date this the 13th day of February, 1959

Joseph D. Walsh
COUNTY SHERIFF

Examined and recommended for approval of the County Court.

Paul B. Jennings
COUNTY SURVEYOR

For order of the County Court approving this plat see Volume 48 Page 656, of County Commissioners' Journal of Proceedings

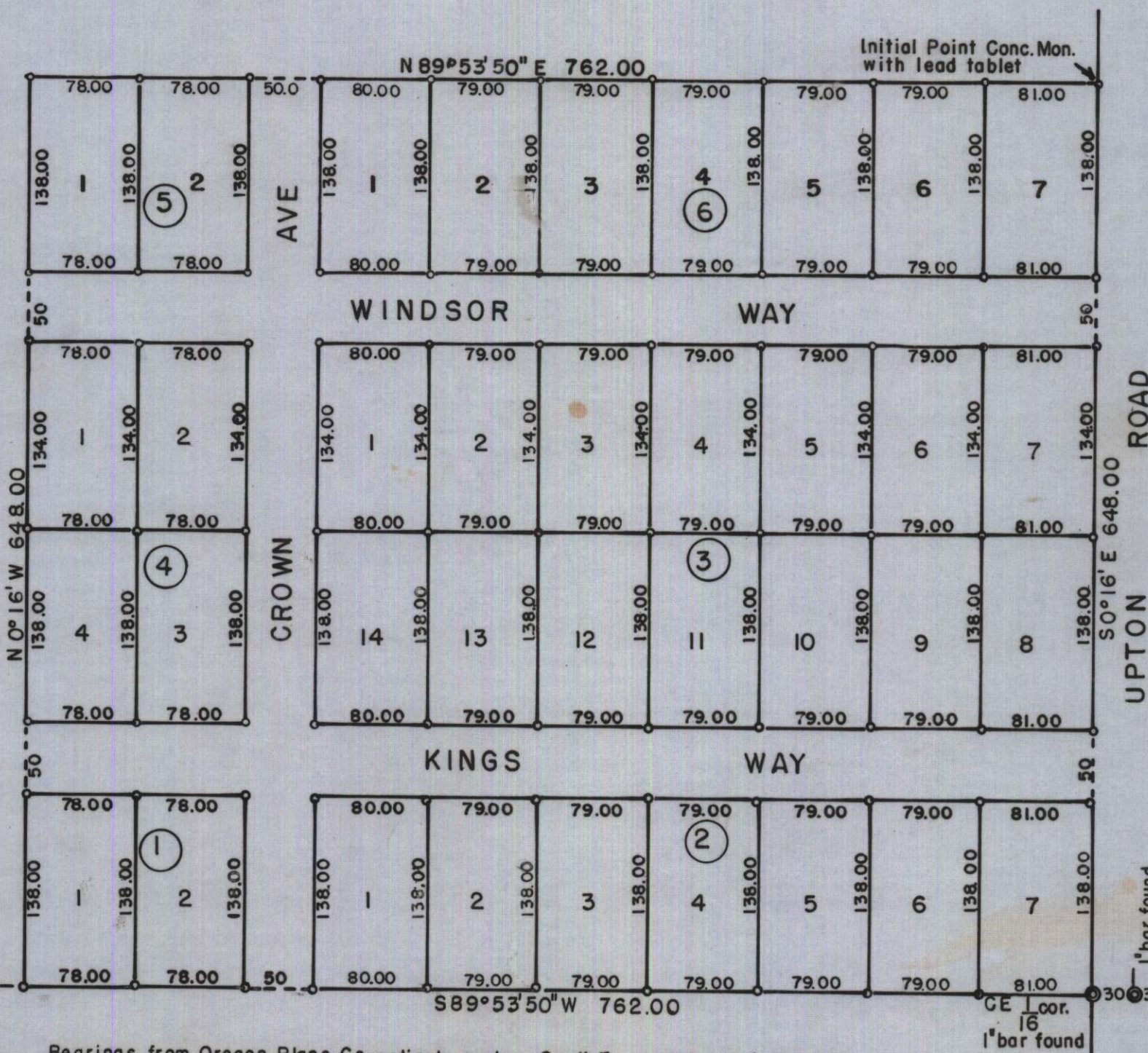
E.M. Maddala
COUNTY CLERK

462216
Filed for record this 20 day of February, 1959, at 10:42 o'clock A.M. and recorded in 8 Volume of Plats at Page 22 of records of Jackson County, Oregon.

E.M. Maddala
COUNTY RECORDER

I hereby certify that this tracing is an exact copy of the original plat filed with the County Clerk.

L.N. Dow



3/4\" bar found.
County Road intersection.



SCALE 1\" = 100'

1\" bar found
1\" bar found

S89°53'50\" W 1270.9
3\" 2
1/4 Cor.
x in sidewalk found

Bearings from Oregon Plane Co-ordinate system, South Zone converted to true.
Lot corners are 5/8\" iron bars.