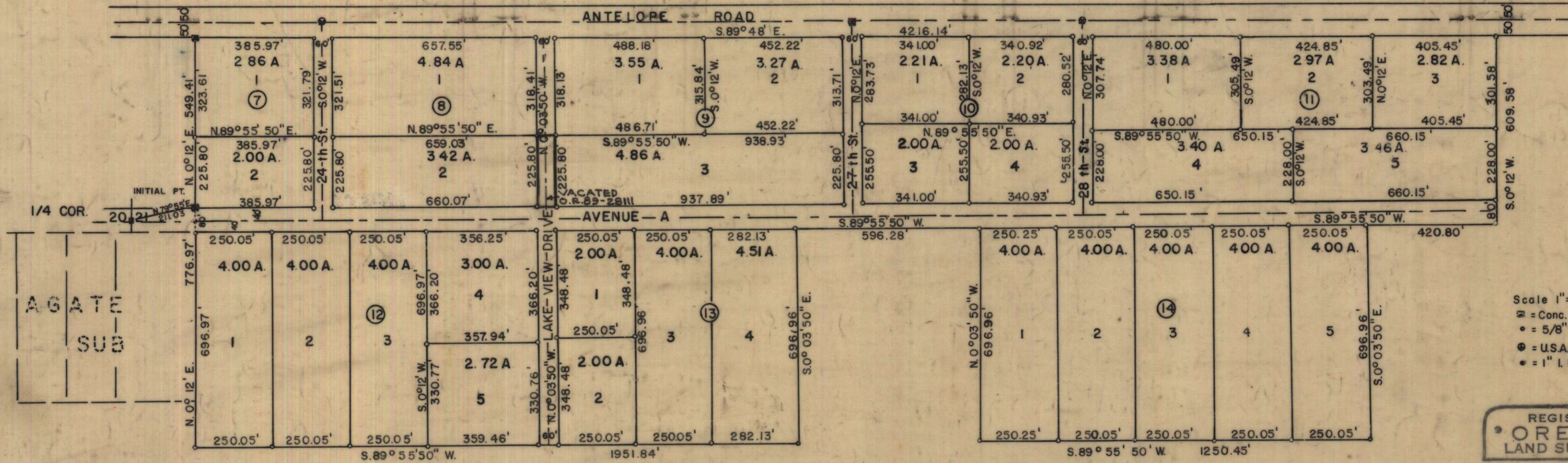


AGATE SUBDIVISION EXTENSION NO. 2

BEING A PORTION OF LOTS 153, 162, 164, 174, & 175
OF ROGUELAND IRRIGATED ORCHARD TRACT
LOCATED IN SEC. 21, T. 36 S., R. 1 W., W.M.



Scale 1" = 300'
 □ = Conc. Mon.
 ● = 5/8" I. Pin
 ⊙ = U.S.A.E. Disc Fd.
 * = 1" I. Pin Fd.

REGISTERED
 OREGON
 LAND SURVEYOR

Edward A. McGinty
 EDWARD A. MCGINTY

JULY 10, 1953
 EDWARD A. MCGINTY
 301

DEDICATION

SURVEYOR'S CERTIFICATE

KNOWN ALL MEN BY THESE PRESENTS, That we C. C. Hoover, Elsie Hoover, M.F. Hoover and Rosalind Hoover are the owners in fee simple of the lands hereon described, and that we have subdivided the same into lot, blocks and streets as shown hereon, and the number and size of the lots and lengths of all lines are plainly set forth, and that this plat is a correct representation of the said subdivision, and we do hereby dedicate to the public for public use all streets, shown hereon, and we do hereby designate said subdivision as AGATE SUBDIVISION EXTENSION NO. 2.

STATE OF OREGON)
 COUNTY OF JACKSON)
 I, Edward A. McGinty, a duly registered surveyor of the State of Oregon, being first duly sworn, do hereby certify that I have correctly surveyed and marked with proper monuments as provided by law the tract of land hereon shown and the said plat is a correct representation of the same and the following is an accurate description of the boundary lines: Commencing at quarter corner common to Sections 20 and 21, Township 36 South, Range 1 West, Willamette Meridian, Jackson County, Oregon; thence North 79° 55' East, 211.03 feet to the Initial Point, being a concrete monument with a bronze disc; thence N. 0° 12' E. 549.41 feet to the South line of Antelope Road; thence S. 89° 48' E. along the South line Antelope Road 4216.14 feet; thence S. 0° 12' W. 609.58 feet; thence S. 89° 55' 50" W. 420.80 feet; thence S. 0° 03' 50" E. 696.96 feet; thence S. 89° 55' 50" W. 1250.45 feet; thence N. 0° 03' 50" W. 696.96 feet; thence S. 89° 55' 50" W. 596.28 feet; thence S. 89° 55' 50" W. 1951.84 feet; thence N. 0° 12' E. 776.97 feet, to the Initial Point.

IN WITNESS WHEREOF we have hereunto set our hands and seals this 15 day of DECEMBER, 1958.

C. C. Hoover
Elsie Hoover
M. F. Hoover
Rosalind Hoover

Edward A. McGinty
 Surveyor

STATE OF OREGON)
 COUNTY OF JACKSON)
 December 15, A.D. 1958
 Personally appeared the above-named, C. C. Hoover, Elsie Hoover, M.F. Hoover and Rosalind Hoover, and acknowledged the foregoing instrument to be their voluntary act and deed. Before me, *Kenneth E. Dorman*
 Notary Public For Oregon

Subscribed and sworn before me this 15 day of December, 1958.
Mydala Reis
 Notary Public for Oregon
 My Commission expires the 23rd day of November, 1960.

My commission expires the 21st day of April, 1959.
 Examined and approved by the Central Point Planning Commission in regular session this the 8th day of December, 1958.
 Attest: *William D. Colley* Secretary, *F. W. Mason* President
 Examined and approved by the Rogue River Valley Irrigation District in regular session this the 5th day of Dec., 1958.
 Attest: *Honold W. Supton* Secretary, *Otto Bohneat* President

For order of the County Court approving this plat see Volume 48 Page 174 of County Commissioner's Journal of Proceedings.
Bessie Hopkins
 County Clerk
 459006
 Filed for record this 29 day of December, 1958, at 1:30 o'clock P.M. and recorded in 8 Volume of Plats pg. 20 of records of Jackson County, Oregon.
Bessie Hopkins
 County Clerk

Examined and approved this 15 day of December, 1958.
Ray J. Schumaker County Assessor, *By Elva Jennings Chief Deputy*
 All taxes paid in full to date this 15 day of December, 1958.
Howard Bault
 County Sheriff

I hereby certify that this tracing is an exact copy of the original plat filed with the County Clerk.
Edward A. McGinty
 Surveyor

Examined and recommended for the approval of the County Court.
Paul C. Symning
 County Surveyor