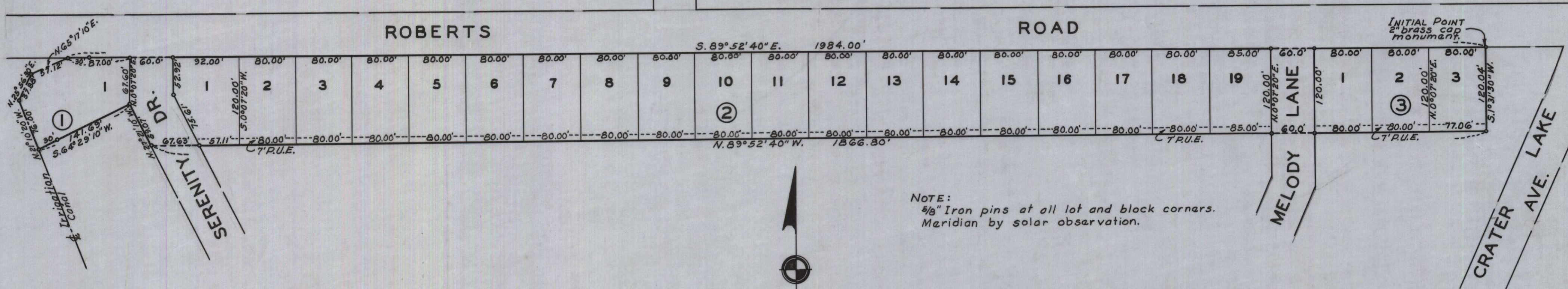


BROOKHURST SUBDIVISION UNIT NO. 1 LOCATED IN SECTION 18, T. 37 S., R. 1 W., W. M. JACKSON COUNTY, OREGON

SCALE: 1"=100'



DEDICATION

KNOW ALL MEN BY THESE PRESENTS, That we, Roy P. Wilkes and Lanell Wilkes are the owners in fee simple of the lands hereon described, and that we have subdivided the same into lots, blocks and streets as shown hereon, and the number and size of the lots and lengths of all lines are plainly set forth, and that this plat is a correct representation of the said subdivision, and we do hereby dedicate to the public for public use all streets and easements for public utilities, shown hereon, and we do hereby designate said subdivision as: BROOKHURST SUBDIVISION UNIT NO. 1.

IN WITNESS WHEREOF, we have hereunto set our hands and seals this 10th day of July, 1958.

Roy P. Wilkes Lanell Wilkes

STATE OF OREGON }
County of Jackson } ss.
July 10th, A.D. 1958.

I personally appeared the above-named Roy P. Wilkes and Lanell Wilkes and acknowledged the foregoing instrument to be their voluntary act and deed.

H. D. Martin
Notary Public for Oregon

My commission expires the 20th day of March, 1959.

Examined and approved by the City of Medford Planning Commission in regular session this the 14th day of July, 1958.

Attest: Suzette Anderson Secretary M. Illway President

Examined and approved by the Rogue River Valley Irrigation District in regular session this the 5th day of August, 1958.

Attest: Ronald M. Supton Secretary Otto Bohmert President

Examined and approved this 20th day of August, 1958.

Oswald Thorge
City Engineer

Examined and approved this 21st day of October, 1958.

Ray Schumacher
County Assessor

All taxes paid in full to date this the 21st day of October, 1958.

Howard Sault
County Sheriff

SURVEYOR'S CERTIFICATE

STATE OF OREGON }
County of Jackson } ss.

I, Leland P. Lovejoy, a duly registered surveyor of the State of Oregon, being first duly sworn, do hereby certify that I have correctly surveyed and marked with proper monuments as provided by law the tract of land hereon shown and the said plat is a correct representation of the same, and the following is an accurate description of the boundary lines: Beginning at a 2" brass cap monument on the south line of Roberts Road for the Initial Point, said monument bears North 308.61 feet and East 2461.44 feet of the Southeast corner of D.L.C. No. 39, Township 37 South, Range 1 West Willamette Meridian, Jackson County, Oregon; thence S. 1° 31' 30" W., 120.04 feet; thence N. 89° 52' 40" W., 1866.80 feet to west line of Serenity Drive; thence N. 27° 21' 10" W. along said west line 59.07 feet; thence S. 64° 29' 10" W., 141.69 feet to centerline of Rogue River Valley Irrigation Canal; thence along centerline of said canal as follows: N. 21° 10' 20" W., 76.00 feet, N. 25° 56' 30" E., 37.88 feet and N. 65° 17' 10" E., 57.12 feet to intersect south line of Roberts Road; thence South 89° 52' 40" East 1984.00 feet along said south line to the Initial Point of Beginning.

Leland P. Lovejoy
Surveyor

Subscribed and sworn to before me this 8th day of July, 1958.

Mary Elizabeth Cronin
Notary Public for Oregon

My commission expires the 1st day of January, 1959.

Examined and recommended for approval of the County Court.

Paul D. Lymington
County Surveyor

For order of the County Court approving this plat see Volume 47, Page 453, of County Commissioners' Journal of Proceedings.

Bereth Hopkins
County Clerk

455624

Filed for record this the 27th day of October, 1958, at 9:45 o'clock A.M. and recorded in 8 Volume of plats at page 18 of records of Jackson County, Oregon.

Bereth Hopkins
County Recorder

I hereby certify that this tracing is an exact copy of the original plat filed with the County Clerk.

Leland P. Lovejoy
Surveyor

