

EDGEMONT SUBDIVISION

IN D.L.C. 51, T. 37 S. R. 1 W. (W.M.)
JACKSON COUNTY, OREGON.

DEDICATION

KNOW ALL MEN BY THESE PRESENTS, That we Mark A. Goldy and Nellie C. Goldy, are the owners in fee simple of the lands hereon described, and that we have subdivided the same into lots, blocks and streets as shown hereon, and the number and size of the lots and lengths of all lines are plainly set forth, and that this plat is a correct representation of the said subdivision, and we do hereby dedicate to the public for public use all streets and alleys and easements for public utilities, shown hereon, and we do hereby designate said subdivision as EDGEMONT SUBDIVISION.

IN WITNESS WHEREOF we have hereunto set our hands and seals this 6th day of September, 1958.



Witness

Mark A. Goldy
Nellie C. Goldy

SEAL.

Witness

SEAL.

STATE OF OREGON s.s.
COUNTY OF JACKSON

September 6th, A.D. 1958.

Personally appeared the above named Mark A. Goldy and Nellie C. Goldy and acknowledged the foregoing instrument to be their voluntary act and deed. Before me:

Richard L. Newellman
NOTARY PUBLIC FOR OREGON

My commission expires the 18th day of November, 1959

STATE OF OREGON s.s.
COUNTY OF JACKSON

Sept 4 A.D. 1958.

SURVEYOR'S CERTIFICATE

I, L.N. Dow, a duly registered surveyor of the State of Oregon, being first duly sworn, do hereby certify that I have correctly surveyed and marked with proper monuments as provided by law the tract of land hereon shown and the said plat is a correct representation of the same, and the following is an accurate description of the boundary lines: Beginning at a concrete monument set six inches below the surface of the ground on the south line of Barnett Road, said point being N0°04'W 1899.75 feet, thence N89°42'W 651.77 feet from the east south east corner of Donation Land Claim NO. 51, Township 37 South, Range 1 West (W.M.) Jackson County, Oregon; thence S0°18'W 159.47 feet, thence N82°00'W 86.65 feet, thence S16°00'W 150.0 feet, thence S51°00'W 302.00 feet, thence S 70°00'W 310.0 feet, thence North 86.50 feet, thence N89°42'W 219.12 feet, thence South 87.65 feet, thence West 60.0 feet, thence North 557.80 feet to the south line of Barnett Road, thence on the arc of a 1402.5 foot radius curve (the chord bears N78°40'14"E 61.19 feet) a distance of 61.19 feet, thence South 145.0 feet, thence N 83°36'06"E 179.87 feet, thence North 145.0 feet to the south line of Barnett Road, thence on the arc of a 1402.5 foot radius curve (the chord bears N88°47'15"E 74.04 feet) a distance of 74.10 feet, thence S89°42'E 620.38 feet to the point of beginning.

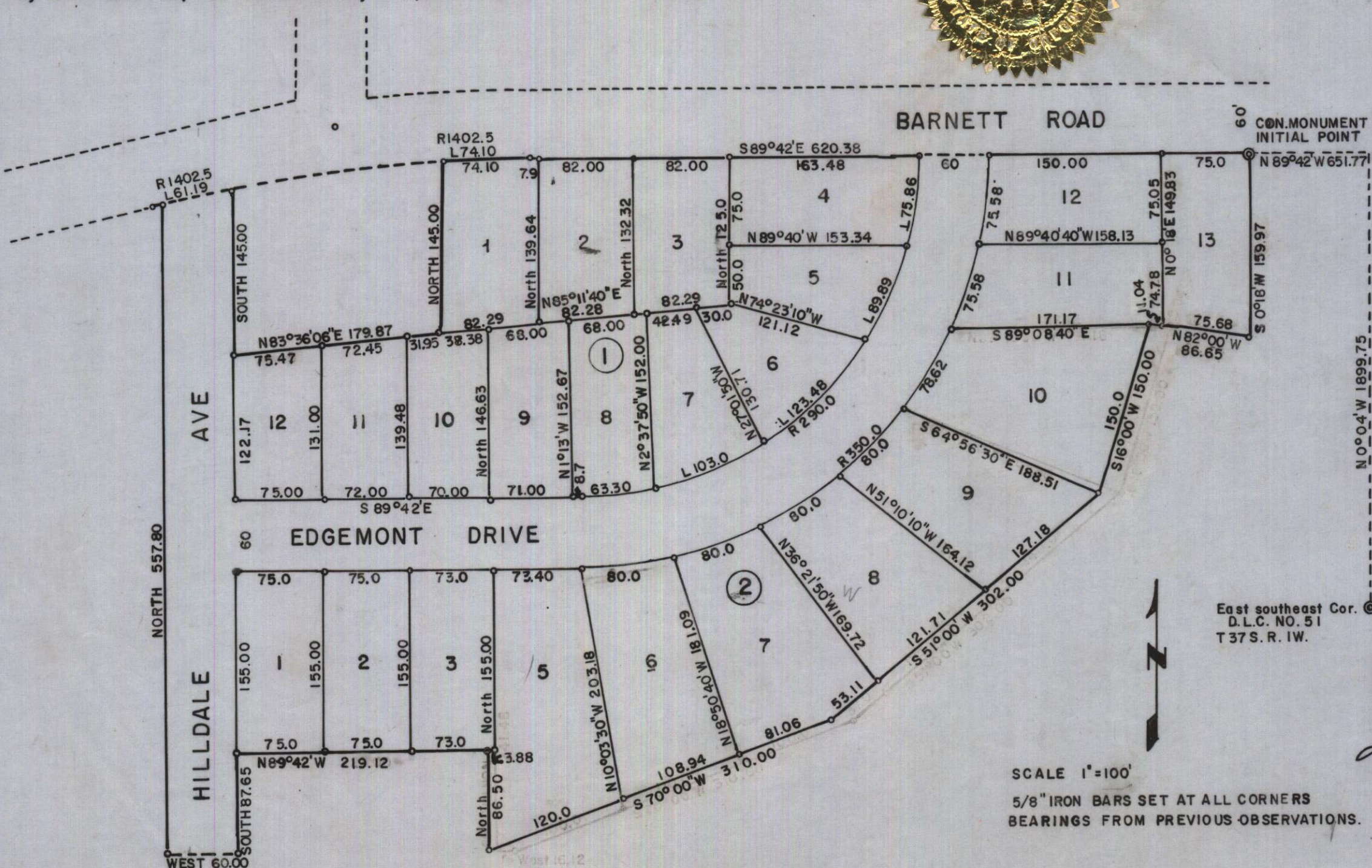
L.N. Dow
SURVEYOR



Subscribed and sworn to before me this 4th day of September 1958.

Richard L. Newellman
NOTARY PUBLIC FOR OREGON

My commission expires the 18th day of November, 1959



Examined and approved by the City of Medford Planning Commission in regular session this the 7th day of Sept., 1958.

M. J. Wray
SECRETARY
Norothy Suddens
PRESIDENT

Examined and approved by the Medford Irrigation District in regular session this the 2nd day of September, 1958.

J. L. Phillips
SECRETARY
Paul Culbertson
PRESIDENT

Examined and approved this 23rd day of September, 1958.

James Hoyle
CITY ENGINEER

Examined and approved this 7th day of October, 1958.

Ray J. Schumacher
COUNTY ASSESSOR.
By *E. L. Jennings*, Chief Deputy

All taxes paid in full to date this the 7th day of October, 1958

Howard Gault
COUNTY SHERIFF

Examined and recommended for approval of the County Court.

Paul D. Byrning
COUNTY SURVEYOR

For order of the County Court approving this plat see Volume 47, Page 354 of County Commissioners' Journal of Proceedings.

Beresh Hopkins
COUNTY CLERK

454581
Filed for record this 9 day of October, 1958, at 1:20 o'clock P. M. and recorded in 8 Volume of Plats at Page 16 of records of Jackson County, Oregon.

Beresh Hopkins
COUNTY RECORDER

I hereby certify that this tracing is an exact copy of the original plat filed with the County Clerk. *L. N. Dow*



SCALE 1"=100'
5/8" IRON BARS SET AT ALL CORNERS
BEARINGS FROM PREVIOUS OBSERVATIONS.