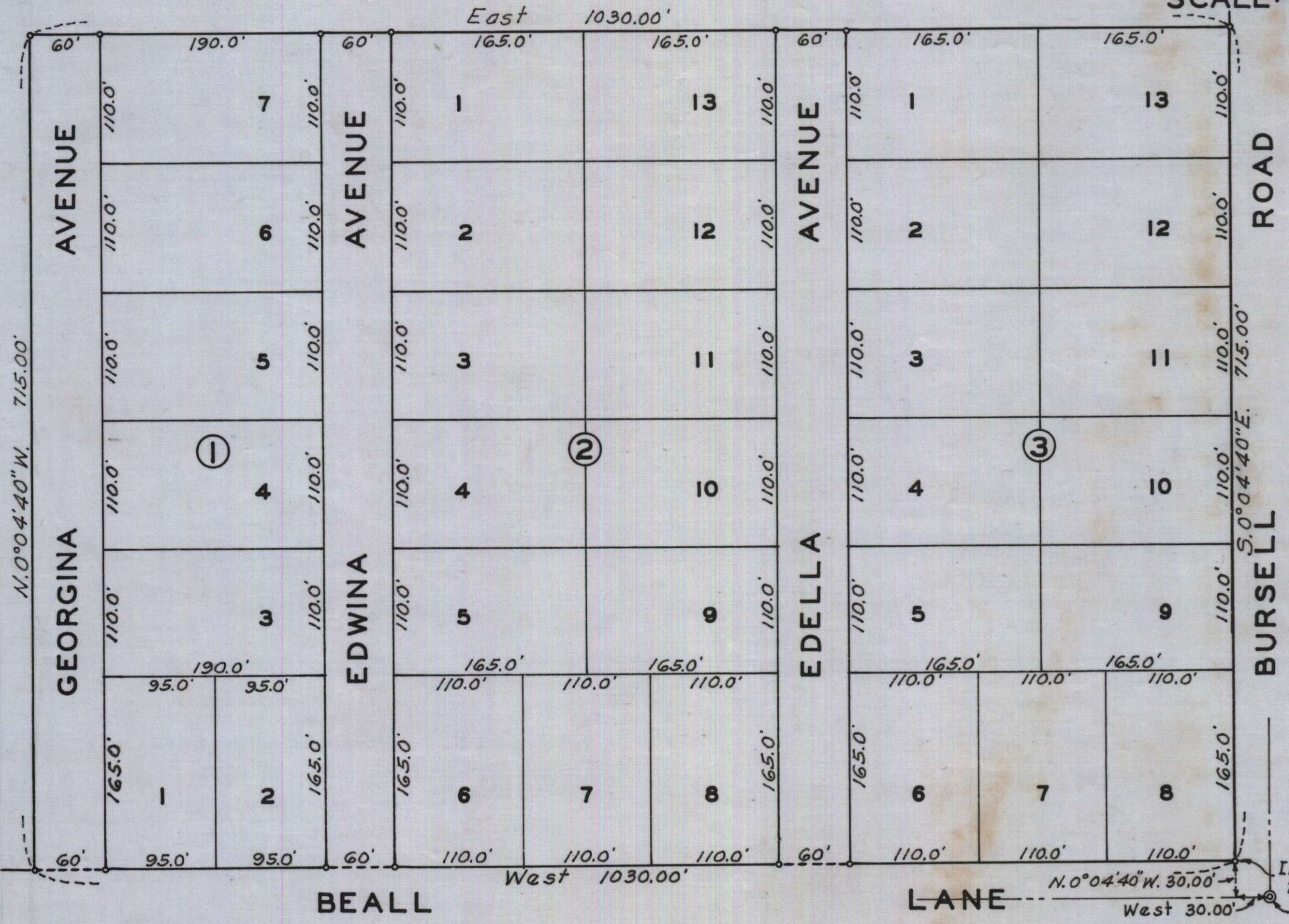


HOMESTEAD ACRES LOCATED IN SEC. 11, T.37S., R.2W.W.M. JACKSON COUNTY, OREGON

SCALE: 1"=100'



SURVEYOR'S CERTIFICATE

STATE OF OREGON } ss.
County of Jackson }

I, Leland P. Lovejoy, a duly registered surveyor of the State of Oregon, being first duly sworn, do hereby certify that I have correctly surveyed and marked with proper monuments as provided by law the tract of land hereon shown and the said plat is a correct representation of the same, and the following is an accurate description of the boundary lines: Beginning at a 2" brass capped monument at the northwest corner of the intersection of Beall Lane and Bursell Road for the Initial Point, said monument bears N.0°04'40"W, 30.00 feet and West 30.00 feet from the Southeast corner of Donation Land Claim No. 54, Township 37 South, Range 2 West, Willamette Meridian, Jackson County, Oregon; thence West 1030.00 feet along the north line of Beall Lane; thence N.0°04'40"W, 715.00 feet; thence East 1030.00 feet to the west line of Bursell Road; thence S.0°04'40"E, 715.00 feet along west line of Bursell Road to the Initial Point of beginning.

Subscribed and sworn to before me this 9th day of August, 1958.

My commission expires the 3rd day of February, 1961.

Examined and approved by the City of Central Point Planning Commission in regular session this the 11th day of August, 1958.

Attest: William D. Colley Secretary J. W. Mason President

Examined and approved by the Rogue River Valley Irrigation District in regular session this the 20th day of August, 1958.

Attest: Donald W. Siston Secretary Olle Bohner President

Examined and approved this 21st day of August, 1958.

Ray J. Schumacher
County Assessor
Viv Elva Jennings
City Planning Deputy

All taxes paid in full to date this the 13th day of August, 1958.

Howard Hunt
County Sheriff

Examined and recommended for approval of the County Court.

Paul D. Jennings
County Surveyor

For order of the County Court approving this plat see Volume 47, Page 140, of County Commissioners' Journal of Proceedings.

Bertha Neptuno
County Clerk

451912

Filed for record this 22nd day of August, 1958, at 4 o'clock P.M. and recorded in 8 Volume of plats at Page 15 of records of Jackson County, Oregon.

Bertha Neptuno
County Recorder

I hereby certify that this tracing is an exact copy of the original plat filed with the County Clerk.

Leland P. Lovejoy
Surveyor

NOTE:
Meridian by Solar Observation.
3/4" Pipe at all lot corners.
1" Pipe at all block corners.

DEDICATION

KNOW ALL MEN BY THESE PRESENTS, That we John O. Cupp and Glades W. Cupp, are the owners in fee simple of the lands hereon described, and that we have subdivided the same into lots, blocks and streets as shown hereon, and the number and size of the lots and lengths of all lines are plainly set forth, and that this plat is a correct representation of the said subdivision, and we do hereby dedicate to the public for public use all streets, shown hereon, and we do hereby designate said subdivision as, HOMESTEAD ACRES.

IN WITNESS WHEREOF we have hereunto set our hands and seals this 13 day of August, 1958.

John O. Cupp Glades W. Cupp

STATE OF OREGON } ss.
County of Jackson }

Personally appeared the above named John O. Cupp and Glades W. Cupp, and acknowledged the foregoing instrument to be their voluntary act and deed. Before me:

My commission expires the 9th day of August, 1958 & 2.

C. F. Hansen
Notary Public for Oregon

