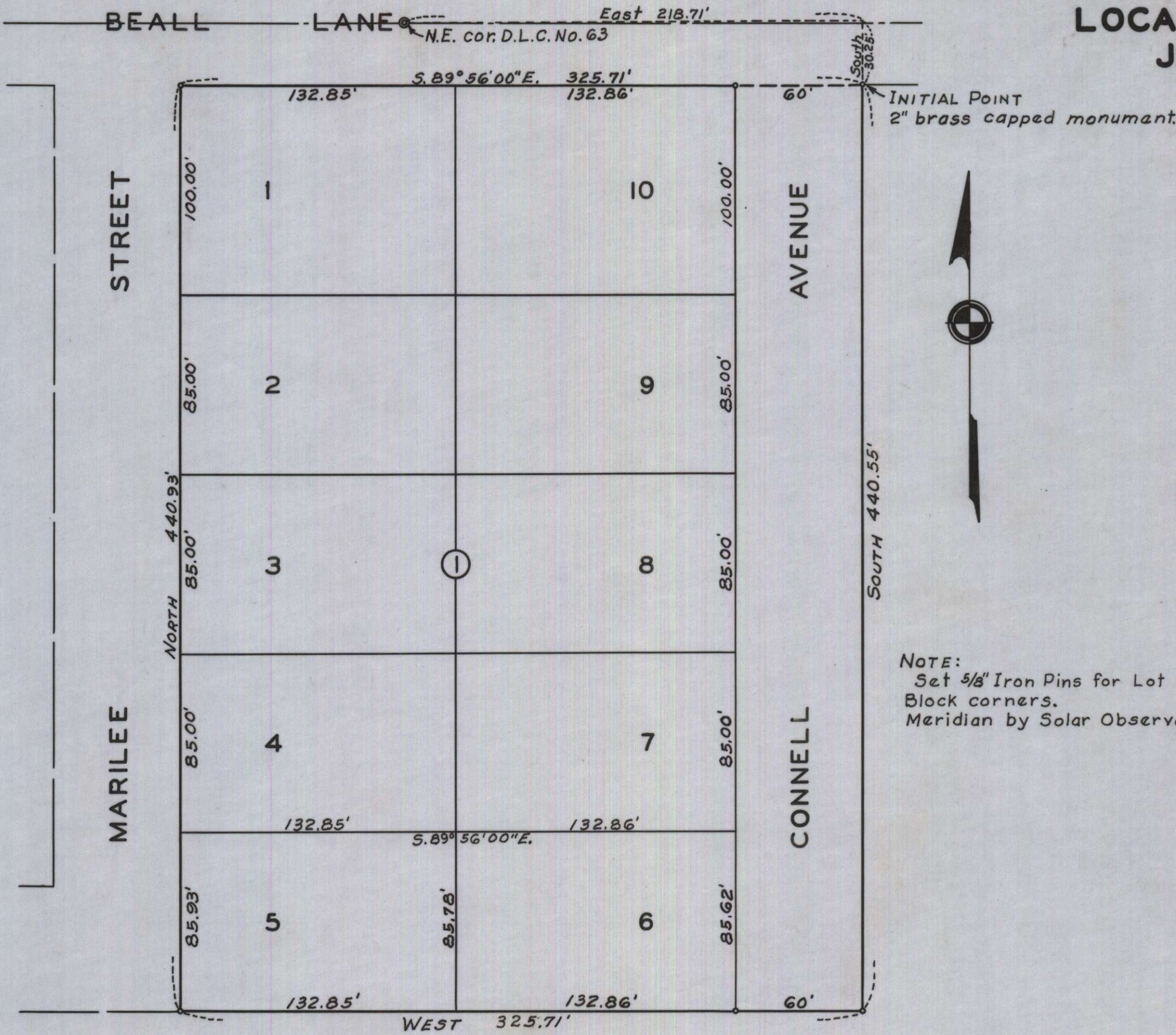


ROSEDALE SUBDIVISION LOCATED IN SEC. II, T.37S., R.2W.W.M. JACKSON COUNTY, OREGON

SCALE: 1" = 50'



NOTE:
Set 5/8" Iron Pins for Lot and Block corners.
Meridian by Solar Observation.

SURVEYOR'S CERTIFICATE

STATE OF OREGON } ss.
County of Jackson }
I, L.P. Lovejoy, a duly registered surveyor of the State of Oregon, being first duly sworn, do hereby certify that I have correctly surveyed and marked with proper monuments as provided by law the tract of land hereon shown and the said plat is a correct representation of the same, and the following is an accurate description of the boundary lines: Beginning at a 2" brass capped monument on the south line of Beall Lane, for the Initial Point, said monument bears South 30.25 feet and East 218.71 feet from the Northeast corner of Donation Land Claim No. 63, Township 37 South, Range 2 West Willamette Meridian, Jackson County, Oregon; thence South 440.55 feet; thence West 325.71 feet; thence North 440.93' to the south line of Beall Lane; thence S. 89° 56' E. along said south line 325.71 feet to the Initial Point of beginning.

Subscribed and sworn to before me this 3 day of July, 1958.
My commission expires the 1 day of January, 1959.

Examined and approved by the City of Medford Planning Commission in regular session this the 14 day of July, 1958.
Attest: Secretary President

Examined and approved by the Rogue River Irrigation District in regular session this the 5 day of August, 1958.
Attest: Secretary President

Examined and approved this 7 day of August, 1958.
All taxes paid in full to date this the 7 day of August, 1958.

Examined and recommended for approval of the County Court.
County Surveyor

For order of the County Court approving this plat see Volume 47, Page 38, of County Commissioners' Journal of Proceedings.
County Clerk

451117
Filed for record this the 7 day of August, 1958, at 4:40 o'clock P.M. and recorded in 2 Volume of plats at page 14 of records of Jackson County, Oregon.
County Recorder

I hereby certify that this tracing is an exact copy of the original plat filed with the County Clerk.
Surveyor

DEDICATION

KNOW ALL MEN BY THESE PRESENTS, That we, The Dan Patch Company Inc., an Oregon Corp., are the owners in fee simple of the lands hereon described, and that we have subdivided the same into lots, block and street as shown hereon, and the number and size of the lots and lengths of all lines are plainly set forth, and that this plat is a correct representation of the said subdivision, and we do hereby dedicate to the public for public use all streets, shown hereon, and we do hereby designate said subdivision as, ROSEDALE SUBDIVISION.

IN WITNESS WHEREOF, we have hereunto set our hands and seals this 11 day of July, 1958.
Secretary President

STATE OF OREGON } ss.
County of Jackson }
July 11 A.D. 1958.
Personally appeared the above-named Dan L. Patch President and Herman L. Ekerson Secretary of The Dan Patch Company Inc., an Oregon Corp., and acknowledged the foregoing instrument to be their voluntary act and deed. Before me:
Notary Public for Oregon
My commission expires the 21 day of May, 1962.

