

# CRATER FABER SUBDIVISION

## DEDICATION

KNOW ALL MEN BY THESE PRESENTS, That we, Donald E. Faber & Leola Faber, husband & wife are the owners in fee simple of the lands hereon described, and that we have subdivided the same into lots, blocks and streets as shown hereon, and the number and size of the lots and lengths of all lines are plainly set forth, and that this plat is a correct representation of the said subdivision, and we do hereby dedicate to the public for public use all streets, shown hereon, and we do hereby designate said subdivision as; CRATER FABER SUBDIVISION

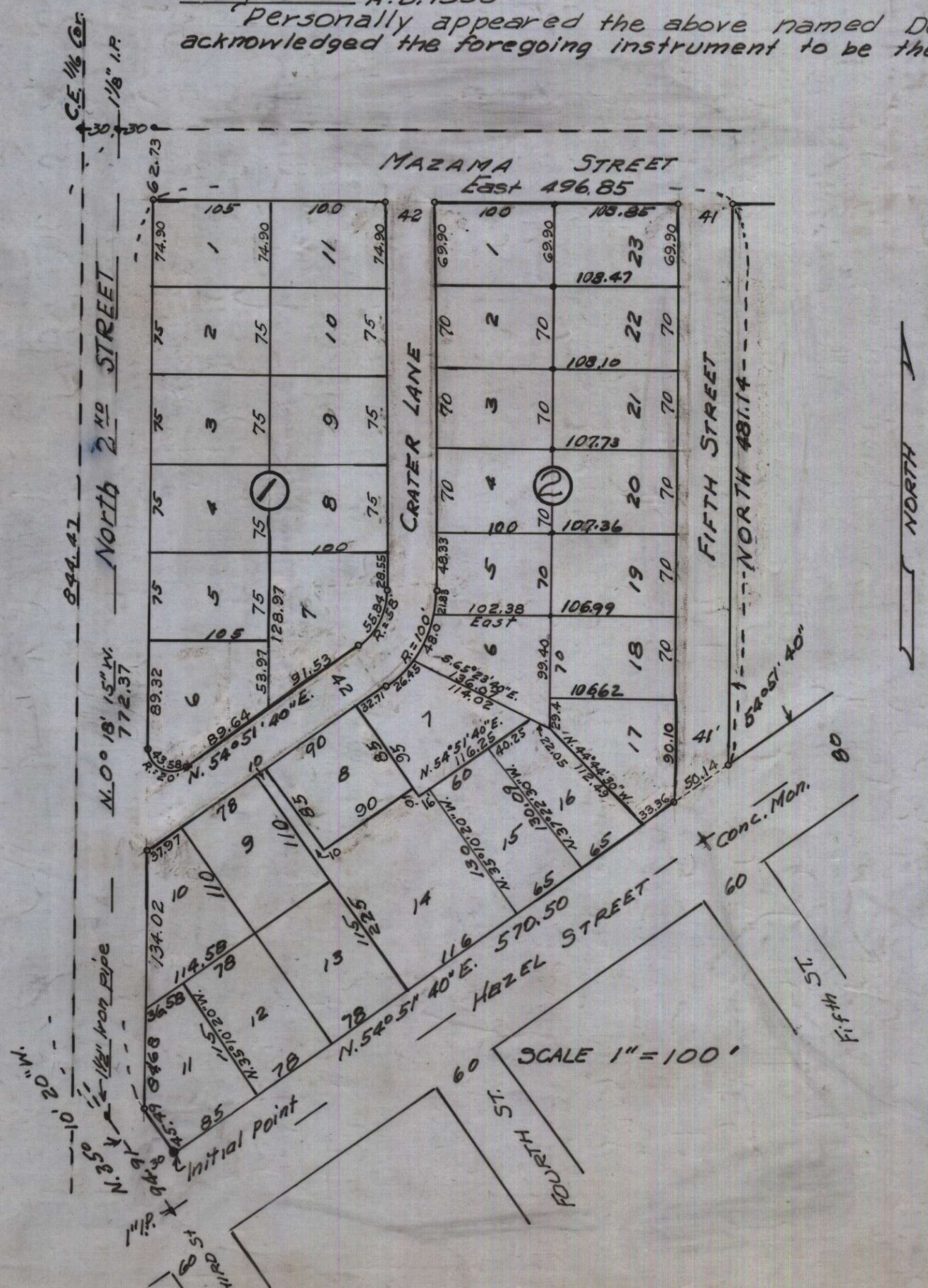
IN WITNESS WHEREOF we have hereunto set our hands and seals this 13 day of May 1958

Donald E. Faber  
Leola Faber

STATE OF OREGON }  
County of Jackson }  
May 13<sup>th</sup> - A.D. 1958

Personally appeared the above named Donald E. Faber and Leola Faber and acknowledged the foregoing instrument to be their voluntary act and deed, Before me:

Richard L. Sturton  
Notary Public for Oregon  
My Commission expires the 27 day of April 1961



NOTE: For the Initial Point, set 6" dia. Concrete Monument with brass center, the top 6" below ground surface. S.C.W.

## ENGINEERS CERTIFICATE



STATE OF OREGON }  
County of Jackson }  
I, S.C. Watkins a duly registered professional Engineer of the State of Oregon, being first duly sworn, do hereby certify that I have correctly surveyed and marked with proper monuments as provided by law the tract of land hereon shown and the said plat is a correct representation of the same, and the following is an accurate description of the boundary lines; Beginning at a point in the City of Central Point, Oregon where the easterly line of Third Street intersects the northerly line of Hazel Street in said city; Thence N. 54° 51' 40" E. along the northerly line of Hazel Street 570.5 feet; Thence North 481.14 feet; Thence Due West 496.85 feet, to the east line of North 2<sup>nd</sup> St.; Thence S. 0° 18' 15" E. along the said east line 772.37 feet, to an angle point in said east line; Thence S. 35° 10' 20" E. 45.49 feet to the Point of Beginning; said point of beginning is the Initial Point of this Plat, and is 575.43 feet South, and 1240.12 West of the 1/4 Corner between Secs. 26, 3, Twp. 37 S., R. 2 W., W.M. Initial Point is marked with 6" dia. Concrete Monument with brass center the top 6" below ground surface.

S.C. Watkins  
Professional Engineer

Subscribed and sworn to before me this 6th day of May 1958  
Clifford G. DeWitt  
Notary Public for Oregon

My Commission expires the 20th day of December 1958

Examined by and approved by the City of Central Point Planning Commission in regular session this 12th day of May 1958  
Attest: William D. Colby Secretary, F.W. Mason President

Examined and Approved, by the Mayor and City Council, City of Central Point, Oregon, this 13 day of May 1958  
Attest: Lois Paull City Clerk, Donald E. Faber Mayor

Examined and approved this 11th day of June 1958  
Paul W. Schumacher  
COUNTY ASSESSOR

All Taxes paid in full to date this the 21 day of May 1958  
Howard Hault  
COUNTY SHERIFF

Examined and recommended for approval of the County Court  
Paul B. Byrnes  
COUNTY SURVEYOR

For order of the County Court approving this plat see Volume 46, Page 357, of County Commissioners' Journal of Proceedings.

Breth Hopkins  
COUNTY CLERK

447734  
Filed for record this 12 day of June 1958 at 4:30 o'clock P.M. and recorded in 8 Volume of plats at page 11 of records of Jackson County, Oregon.

Breth Hopkins  
COUNTY RECORDER

I hereby certify that this tracing is an exact copy of the Original Plat filed with the County Clerk.

S.C. Watkins  
PROFESSIONAL ENGINEER

