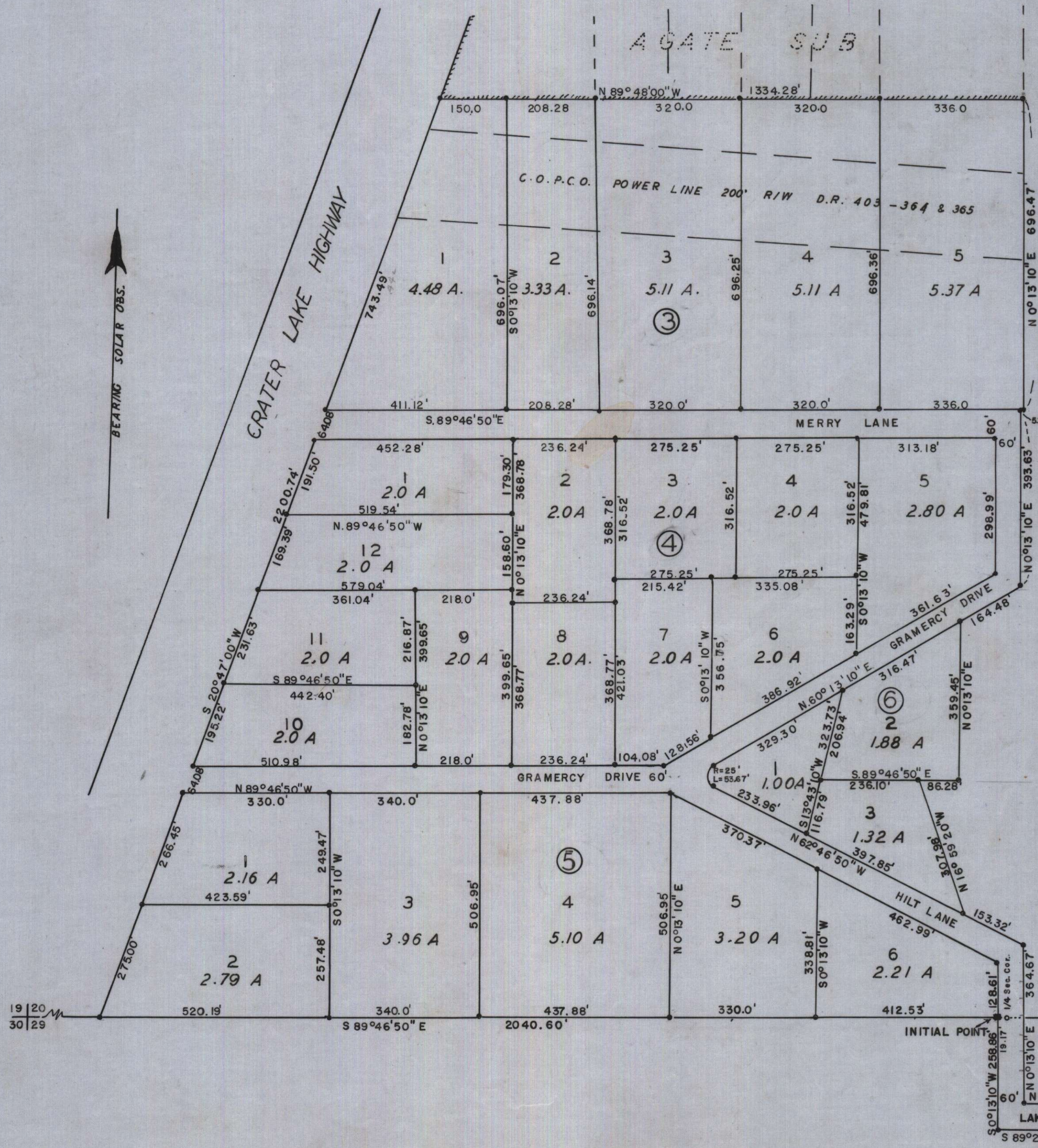


AGATE SUBDIVISION EXTENSION NO. 1

BEING A PORTION OF LOTS 118, 119, 131, 132, 133, 138, 139 & 140 OF ROGUELANDS IRRIGATED ORCHARD TRACT LOCATED IN SECTION 20 & 29, T.36S., R.1W., W.M.

SCALE 1" = 200'
• = 5/8" I. PINS
○ = 1" I. PIPE
■ = CONC. MONU.



DEDICATION

KNOW ALL MEN BY THESE PRESENTS, That we C.C. Hoover, Elsie Hoover, M.F. Hoover and Rosalind Hoover, are the owners in fee simple of the lands hereon described, and that we have subdivided the same into lots, blocks and streets as shown hereon, and the number and size of the lots and lengths of all lines are plainly set forth, and that this plat is a correct representation of the said subdivision, and we do hereby dedicate to the public for public use all streets, shown hereon, and we do hereby designate said subdivision as, Agate Subdivision Extension No. 1

IN WITNESS WHEREOF we have hereunto set our hands and seals this 15 day of October, 1957

C.C. Hoover
Elsie Hoover
Rosalind Hoover

STATE OF OREGON)
COUNTY OF JACKSON) ss

October 15 A.D. 1957.

Personally appeared the above named C.C. Hoover, Elsie Hoover, M.F. Hoover and Rosalind Hoover, and acknowledged the foregoing instrument to be their voluntary act and deed Before me,

Alta C. Blahase
Notary Public for Oregon

My commission expires the 11 day of March, 1960.

Examined and approved by the Central Point Planning Commission in regular session on this 14 day of October, 1957.
Attest: Edward P. Hoover Secretary, F.W. Mason President

Examined and approved by the Rogue River Valley Irrigation District in regular session on this 11 day of Oct, 1957.
Attest: Harold W. Linton Secretary, Olto Bohner President

Examined and approved this 22 day of October, 1957
Ray Schumacher
County Assessor

All taxes paid in full to date this 21 day of October, 1957.
Howard Gault
County Sheriff

Examined and Recommended for approval of the County Court.
Paul B. Jennings
County Surveyor

SURVEYOR'S CERTIFICATE

STATE OF OREGON)
COUNTY OF JACKSON) ss

I, E.A. McGinty, a duly registered surveyor of the State of Oregon, being first duly sworn, do hereby certify that I have correctly surveyed and marked with proper monuments as provided by law the tract of land hereon shown and the said plat is a correct representation of the same and the following is an accurate description of the boundary lines: Commencing at the quarter corner common to Sections 20 and 29, Township 36 South, Range 1 West, Willamette Meridian, Jackson County, Oregon; thence N.89°46'50"W. 19.17 feet to the initial Point being a concrete monument with bronze disc; thence S.0°13'10"W. 258.86 feet; thence S.89°22'30"E. 432.80 feet; thence North 60 feet to N.W. corner Lotus Subdivision Extension No. 3, of record; thence N.89°22'30"W. 372.58 feet; thence N.0°13'10"E. 364.67 feet; thence N.62°46'50"W. 153.32 feet; thence N.16°59'20"W. 307.98 feet; thence S.89°46'50"E. 86.28 feet; thence N.0°13'10"E. 359.45 feet; thence N.60°13'10"E. 164.48 feet; thence M.0°13'10"E. 393.63 feet; thence S.89°46'50"E. 5.71 feet; thence N.0°13'10"E. 696.47 feet to S.E. corner of lot 6 block 1, Agate Sub-d. of record; thence N.89°48'W along said subdivision 1334.28 feet to the East right of way line of Crater Lake Highway; thence S.20°47'W. along said highway 2200.74 feet to the section line between said Section 20 and 29; thence S.89°46'50"E. along said section line 2040.60 feet to the initial Point.

Edward A. McGinty
Surveyor

Subscribed and sworn before me this 1st day of October, 1957.
Mydiah Neil
Notary Public for Oregon

My Commission expires the 23rd day of November, 1957.

For order of the County Court approving this plat see Volume 45, Page 43 of County Commissioner's Journal of Proceedings.

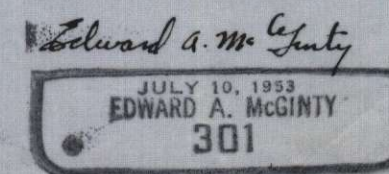
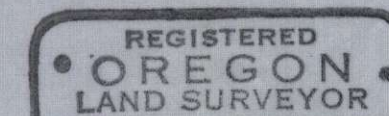
436145
Bereth P. Hopkins
County Clerk

Filed for record this 12 day of November, 1957, at 9:45 o'clock a.m. and recorded in 8 Volume of plats of Page 5 of records of Jackson County, Oregon.

Bereth P. Hopkins
County Recorder

I hereby certify that this tracing is an exact copy of the original plat filed with the County Clerk

Edward A. McGinty
Surveyor



LOTUS EXT. 3