

# DOUGLAS ADDITION NO. 1

LOCATED IN S.36, T.37 S. R. 2 W., (W.M.)  
JACKSON COUNTY, OREGON.

### DEDICATION

KNOW ALL MEN BY THESE PRESENTS, That we W. Benton Smith and Frances Ellen Smith, are the owners in fee simple of the lands hereon described, and that we have subdivided the same into lots blocks and streets as shown hereon, and the number and size of the lots and lengths of all lines are plainly set forth, and that this plat is a correct representation of the said subdivision, and we do hereby dedicate to the public for public use all streets and alleys and easements for public utilities, shown hereon, and we do hereby designate said subdivision as DOUGLAS ADDITION NO. 1.

IN WITNESS WHEREOF we have hereunto set our hands and seals this 20<sup>th</sup> day of February 1957

Witness *W. Benton Smith* SEAL

Witness *Frances Ellen Smith* SEAL

STATE OF OREGON } s.s.  
COUNTY OF JACKSON }  
*Feb. 20<sup>th</sup>* A.D. 1957

Personally appeared the above named W. Benton Smith and Frances Ellen Smith, and acknowledged the foregoing instrument to be their voluntary act and deed. Before me:

*Mabel Wiley*  
NOTARY PUBLIC FOR OREGON

My commission expires the 4<sup>th</sup> day of May, 1959

### SURVEYOR'S CERTIFICATE

STATE OF OREGON } s.s.  
COUNTY OF JACKSON }

I, L.N. Dow, a duly registered surveyor of the State of Oregon, being first duly sworn, do hereby certify that I have correctly surveyed and marked with proper monuments as provided by law the tract of land hereon shown and the said plat is a correct representation of the same, and the following is an accurate description of the boundary lines:

Beginning at a concrete monument with lead tablet set six inches below the surface of the ground at the point of intersection of the west line of Columbus Avenue with the north line of Douglas Addition to the City of Medford, said point of beginning being North 840.81 feet, and West 668.34 feet from the north west corner of Donation Land Claim No. 84, Township 37 South, Range 2 West, Willamette Meridian, Jackson County, Oregon., thence N89°56'W along the north line of Douglas Addition 247.46 feet to the northwest corner thereof, thence South 20.00 feet, thence N89°56'W 165.12 feet, thence N0°04'E 342.00 feet, thence S89°56'E 412.72 feet, thence S0°07'34"E 322.00 feet, thence N89°56'W 1.25 feet to the point of beginning.

*L. N. Dow*  
SURVEYOR

Subscribed and sworn to before me this 8<sup>th</sup> day of October, 1956

*New G. Samuels*  
NOTARY PUBLIC FOR OREGON

My commission expires the 29<sup>th</sup> day of September 1960

Examined and approved by the City of Medford Planning Commission in regular session this the 8 day of Oct. 1956

Attest: *Edward D. McKinstry*  
SECRETARY

PRESIDENT *M. McKeay*

Examined and approved by the Medford Irrigation District in regular session this the 2<sup>nd</sup> day of April, 1956

Attest: *J. G. Ashbaugh*  
SECRETARY

PRESIDENT *Paul Culbertson*

Examined and approved this 11<sup>th</sup> day of April, 1957

*Ray Schumacher*  
COUNTY ASSESSOR

All taxes paid in full to date this the 5 day of April, 1957

*Howard Vault*  
COUNTY SHERIFF

Examined and recommended for approval of the County Court

*Paul B. Gunning*  
COUNTY SURVEYOR

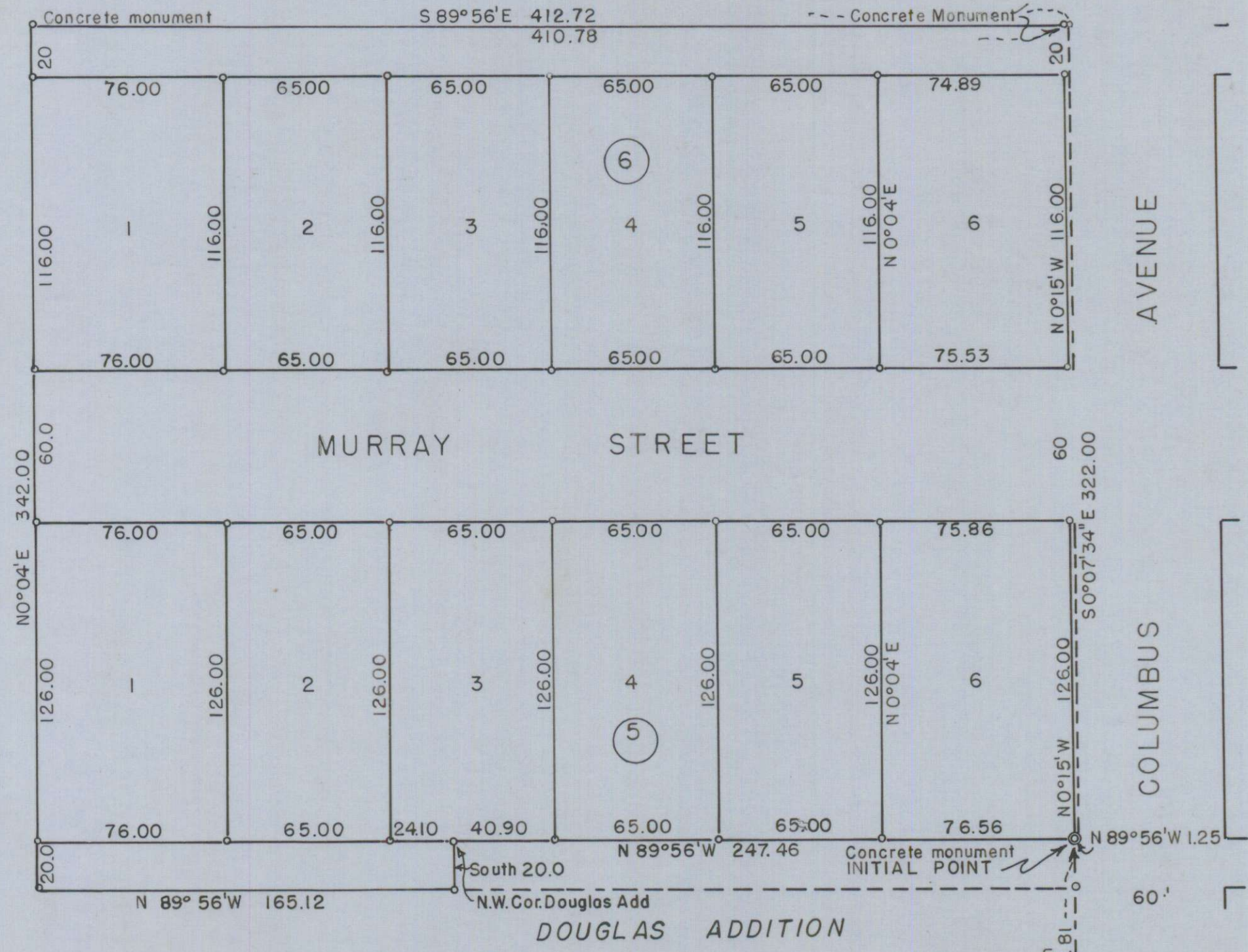
For order of the County Court approving this plat see Volume 43 Page 411, of County Commissioner's Journal of Proceedings.

424886  
Filed for record this 18 day of April, 1957, at 9:00 o'clock a.m. and recorded in 7 Volume of Plots at Page 51 of records of Jackson County, Oregon.

*Bereth P. Hopkins*  
COUNTY RECORDER  
By *Alton Carter*, Deputy

I hereby certify that this tracing is an exact copy of the original plat filed with the County Clerk.

*L. N. Dow*



Bearings are from Solar Observations  
All corners are 5/8" Iron bars except conc monuments as indicated.  
SCALE 1" = 50'

