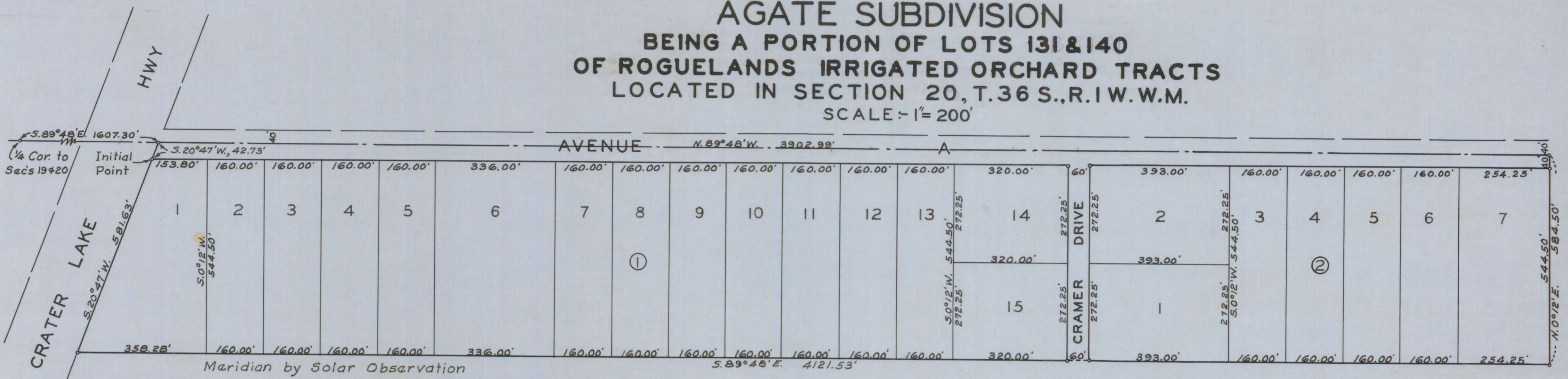


AGATE SUBDIVISION

BEING A PORTION OF LOTS 131 & 140 OF ROGUELANDS IRRIGATED ORCHARD TRACTS LOCATED IN SECTION 20, T.36 S., R.1 W. W.M.

SCALE - 1" = 200'



DEDICATION

KNOW ALL MEN BY THESE PRESENTS, That we, C.C. Hoover, Elsie Hoover, M.F. Hoover and Rosalind Hoover, are the owners in fee simple of the lands hereon described, and that we have subdivided the same into lots, blocks and streets as shown hereon, and the number and size of the lots and lengths of all lines are plainly set forth, and that this plat is a correct representation of the said subdivision, and we do hereby dedicate to the public for public use all streets, shown hereon, and we do hereby designate said subdivision as, Agate Subdivision

IN WITNESS WHEREOF we have hereunto set our hands and seals this 27 day of August, 1956.

M. F. Hoover
Rosalind O. Hoover
C. C. Hoover
Elsie Hoover

STATE OF OREGON } ss.
 County of Jackson }
August 27 A.D. 1956.

Personally appeared the above-named, C.C. Hoover, Elsie Hoover, M.F. Hoover and Rosalind Hoover, and acknowledged the foregoing instrument to be their voluntary act and deed. Before me.

Alan C. Blaker
 Notary Public for Oregon
 My commission expires the 11 day of MARCH, 1960.

Examined and approved by the Central Point Planning Commission in regular session this the 10 day of September, 1956.

Attest: Donald A. Dyer Secretary W. B. Dineen President

Examined and approved by the Rogue River Valley Irrigation District in regular session this the 11 day of Sept, 1956.

Attest: Donald R. Sexton Secretary Otto Bohner President

Examined and approved this 10 day of October, 1956.

Elna Jennings
County Assessor

All taxes paid in full to date this the 4 day of October, 1956.

Howard Bault
County Sheriff

Examined and recommended for approval of the County Court.

Paul B. Lyman
County Surveyor

ENGINEER'S CERTIFICATE

STATE OF OREGON } ss.
 County of Jackson }
 I, J.H. Clabby, a duly registered engineer of the State of Oregon, being first duly sworn, do hereby certify that I have correctly surveyed and marked with proper monuments as provided by law the tract of land hereon shown and the said plat is a correct representation of the same, and the following is an accurate description of the boundary lines: Commencing at the quarter corner common to Sections 19 and 20, Township 36 South, Range 1 West, Willamette Meridian, Jackson County, Oregon; thence S. 89° 48' E., 1607.30 feet to a point on the easterly right-of-way line of the Crater Lake Highway; thence S. 20° 47' W., 42.73 feet along said right-of-way line for the Initial Point, a concrete monument with bronze disk; thence S. 20° 47' W. along said right-of-way line 581.63 feet; thence S. 89° 48' E., 4121.53 feet; thence N. 0° 12' E., 584.50 feet; thence N. 89° 48' W., 3902.99 feet; thence S. 20° 47' W., 42.73 feet to the Initial Point.

J. H. Clabby
 Engineer
 Subscribed and sworn to before me this 23rd day of August, 1956.
Norman T. Spitzer
 Notary Public for Oregon
 My commission expires the 12th day of June, 1960.

For order of the County Court approving this plat see Volume 42, Page 403, of County Commissioners' Journal of Proceedings.

Bereth Hepburn
 County Clerk

415616

Filed for record this 25 day of Oct., 1956, at 8:30 o'clock A.M. and recorded in 7 Volume of plats at Page 47 of records of Jackson County, Oregon.

Bereth Hepburn
 County Recorder

I hereby certify that this tracing is an exact copy of the original plat filed with the County Clerk.

J. H. Clabby
 Engineer

