

LOTUS SUBDIVISION EXTENSION NO. 3
BEING A PORTION OF LOTS 138 & 151
OF ROGUELANDS IRRIGATED ORCHARD TRACTS
LOCATED IN SECTIONS 28 & 29, T.36 S., R.1 W., W.M.
 SCALE - 1" = 200'

vacated 12/15/2017
 Dec. # 2017-042128

DEDICATION

KNOW ALL MEN BY THESE PRESENTS, That we, C.C. Hoover, Elsie Hoover, M.F. Hoover and Rosalind Hoover, are the owners in fee simple of the lands hereon described, and that we have subdivided the same into lots, blocks and streets as shown hereon, and the number and size of the lots and lengths of all lines are plainly set forth, and that this plat is a correct representation of the said subdivision, and we do hereby dedicate to the public for public use all streets, shown hereon, and we do hereby designate said subdivision as, Lotus Subdivision Extension No. 3.

IN WITNESS WHEREOF we have hereunto set our hands and seals this 27 day of August, 1956.

M. F. Hoover E. C. Hoover
Rosalind O. Hoover Elsie Hoover

STATE OF OREGON } ss.
 County of Jackson }

August 27 A. D. 1956.
 Personally appeared the above-named, C.C. Hoover, Elsie Hoover, M.F. Hoover and Rosalind Hoover, and acknowledged the foregoing instrument to be their voluntary act and deed.
Clara C. Blanton
 Notary Public for Oregon

My commission expires the 11 day of MARCH, 1962.

Examined and approved by the Central Point Planning Commission in regular session this the 10 day of Sept., 1956.
 Attest: Richard A. Seymour Secretary W. D. Sinclair President

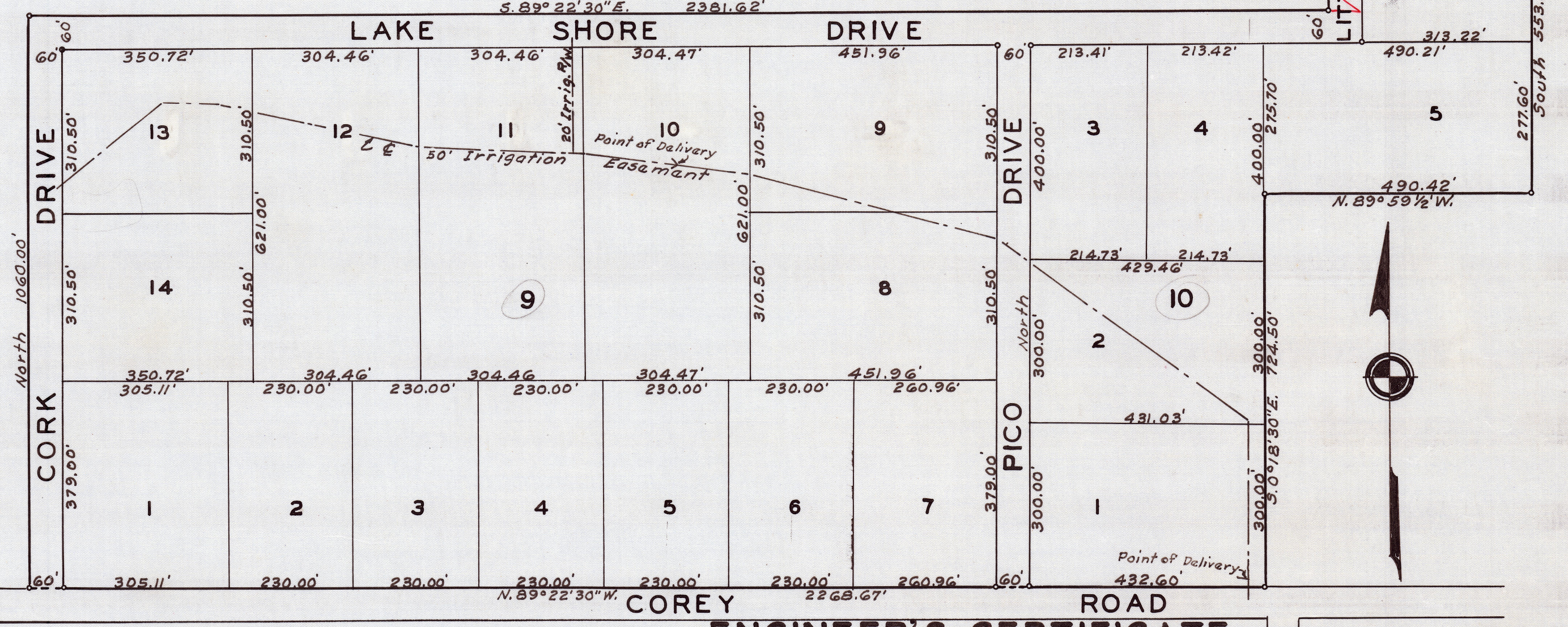
Examined and approved by the Rogue River Valley Irrigation District in regular session this the 11 day of Sept., 1956.
 Attest: Harold W. Sexton Secretary Otto Johnson President

Examined and approved this 11 day of October, 1956.
Clara Jennings
 County Assessor

All taxes paid in full to date this the 11 day of October, 1956.
Howard Jault
 County Sheriff

Examined and recommended for approval of the County Court.
Paul W. Byrning
 County Surveyor

I hereby certify that this tracing is an exact copy of the original plat filed with the County Clerk.
J. H. Clabby
 Engineer



ENGINEER'S CERTIFICATE

STATE OF OREGON } ss.
 County of Jackson }

I, J.H. Clabby, a duly registered engineer of the State of Oregon, being first duly sworn, do hereby certify that I have correctly surveyed and marked with proper monuments as provided by law the tract of land hereon shown and the said plat is a correct representation of the same, and the following is an accurate description of the boundary lines: Commencing at the section corner common to Sections 20, 21, 28 and 29, Township 36 South, Range 1 West, Willamette Meridian, Jackson County, Oregon; thence S. 89° 59' 30\" E., 141.70 feet to the Initial Point of beginning, a concrete monument with bronze disc; thence S. 89° 59' 30\" E., 373.22 feet; thence South 553.56 feet; thence N. 89° 59' 30\" W., 490.42 feet; thence S. 0° 18' 30\" E., 724.50 feet to the north right-of-way line of Corey Road; thence N. 89° 22' 30\" W. along said right-of-way line 2268.67 feet; thence North 1060.00 feet; thence S. 89° 22' 30\" E., 2381.62 feet; thence North 219.49 feet to the Initial Point.

J. H. Clabby
 Engineer
 Subscribed and sworn to before me this 23rd day of August, 1956.
Norman F. Gannon
 Notary Public for Oregon

My commission expires the 12th day of June, 1962.

For order of the County Court approving this plat see Volume 42, Page 404, of County Commissioners' Journal of Proceedings.
Bereth Hopkins
 County Clerk

415615

Filed for record this 25 day of Oct., 1956, at 8:30 o'clock A. M. and recorded in 7 Volume of plats at Page 46 of records of Jackson County, Oregon.
Bereth Hopkins
 County Recorder

