

# JEFFERSON SUBDIVISION

IN D.L.C.45, T.37S.R.1W.(W.M.)  
JACKSON COUNTY, OREGON.

### DEDICATION

KNOW ALL MEN BY THESE PRESENTS, That we, Phyllis E. Simmons and Lois E. Simmons, are the owners in fee simple of the lands hereon described, and that we have subdivided the same into lots, blocks and streets as shown hereon, and the number and size of the lots and lengths of all lines are plainly set forth, and that this plat is a correct representation of the said subdivision, and we do hereby dedicate to the public for public use all streets and alleys and easements for public utilities, shown hereon, and we do hereby designate said subdivision as JEFFERSON SUBDIVISION.

IN WITNESS WHEREOF we have hereunto set our hands and seals this 4<sup>th</sup> day of April, 1956

Witness Phyllis E. Simmons SEAL

Witness Lois E. Simmons SEAL

STATE OF OREGON }  
COUNTY OF JACKSON } s.s.

April 4, A.D. 1956

Personally appeared the above named Phyllis E. Simmons and Lois E. Simmons and acknowledged the foregoing instrument to be their voluntary act and deed. Before me:

Richard L. Kerschman

NOTARY PUBLIC FOR OREGON

My commission expires the 8<sup>th</sup> day of November, 1957



### SURVEYOR'S CERTIFICATE

STATE OF OREGON }  
COUNTY OF JACKSON } s.s.

I, L. N. Dow, a duly registered surveyor of the State of Oregon, being first duly sworn, do hereby certify that I have correctly surveyed and marked with proper monuments as provided by law the tract of land hereon shown and the said plat is a correct representation of the same, and the following is an accurate description of the boundary lines:

Beginning at a point on the north line of Garfield Road, said point of beginning being a concrete monument with lead tablet set six inches below the surface of the ground at a point N89°57'E (along the D.L.C. line) 1318.49 feet, thence N0°03'W 40.00 feet from the southwest corner of Donation Land Claim No.85, Township 37 South Range 2 West, Willamette Meridian, Jackson County, Oregon; from this point of beginning thence N0°03'W 1219.73 feet to the south line of Holmes Avenue, thence N89°57'E along the south line of Holmes Avenue 334.00 feet; thence S0°03'E 1219.53 feet to the north line of Garfield Road; thence S89°57'W along the north line of Garfield Road 334.00 feet to the point of beginning.

L. N. Dow

SURVEYOR

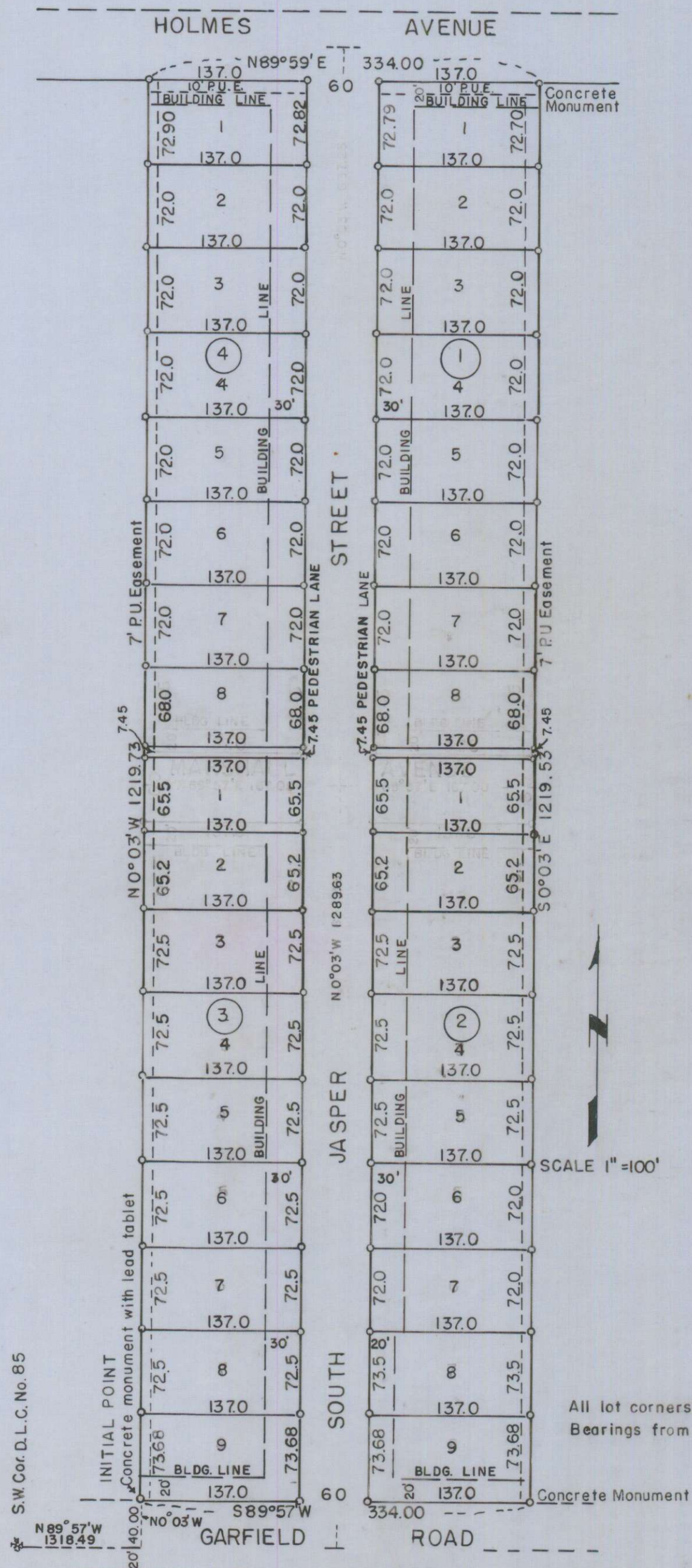
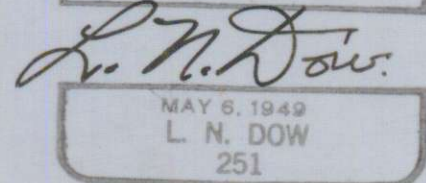
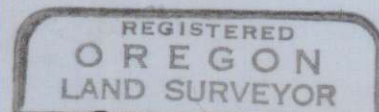
Subscribed and sworn to before me this 3rd day of April, 1956

Neva G. Samuels

NOTARY PUBLIC FOR OREGON

My commission expires the 29th day of September, 1956

All lot corners are 5/8"x30" Iron bars  
Bearings from solar observations



Examined and approved by the City of Medford Planning Commission in regular session this the 23 day of APRIL, 1956

Attest: Edward M. Kinsley  
SECRETARY

M. J. Kelley  
PRESIDENT

Examined and approved by the Medford Irrigation District in regular session this the 1<sup>st</sup> day of May, 1956

J. G. Ashbaugh  
SECRETARY

Paul Culbertson  
PRESIDENT

Examined and approved this 23 day of APRIL, 1956

Edward M. Kinsley  
CITY ENGINEER

Examined and approved this 16 day of May, 1956

Elva Jennings  
COUNTY ASSESSOR

All taxes paid in full to date this the 16 day of May, 1956

Howard Gault  
COUNTY SHERIFF  
Marjorie Brooks  
deputy

Examined and recommended for approval of the County Court

Paul D. Symington  
COUNTY SURVEYOR

For order of the County Court approving this plat see Volume 41 Page 737, of County Commissioners' Journal of Proceedings.

Breth Hopkins  
COUNTY CLERK

406718

Filed for record this 19 day of May, 1956, at 8:30 o'clock a.m. and recorded in 7 Volume of plats at Page 41 of records of Jackson County, Oregon.

Breth Hopkins  
COUNTY RECORDER.

I hereby certify that this tracing is an exact copy of the original plat filed with the County Clerk.

L. N. Dow