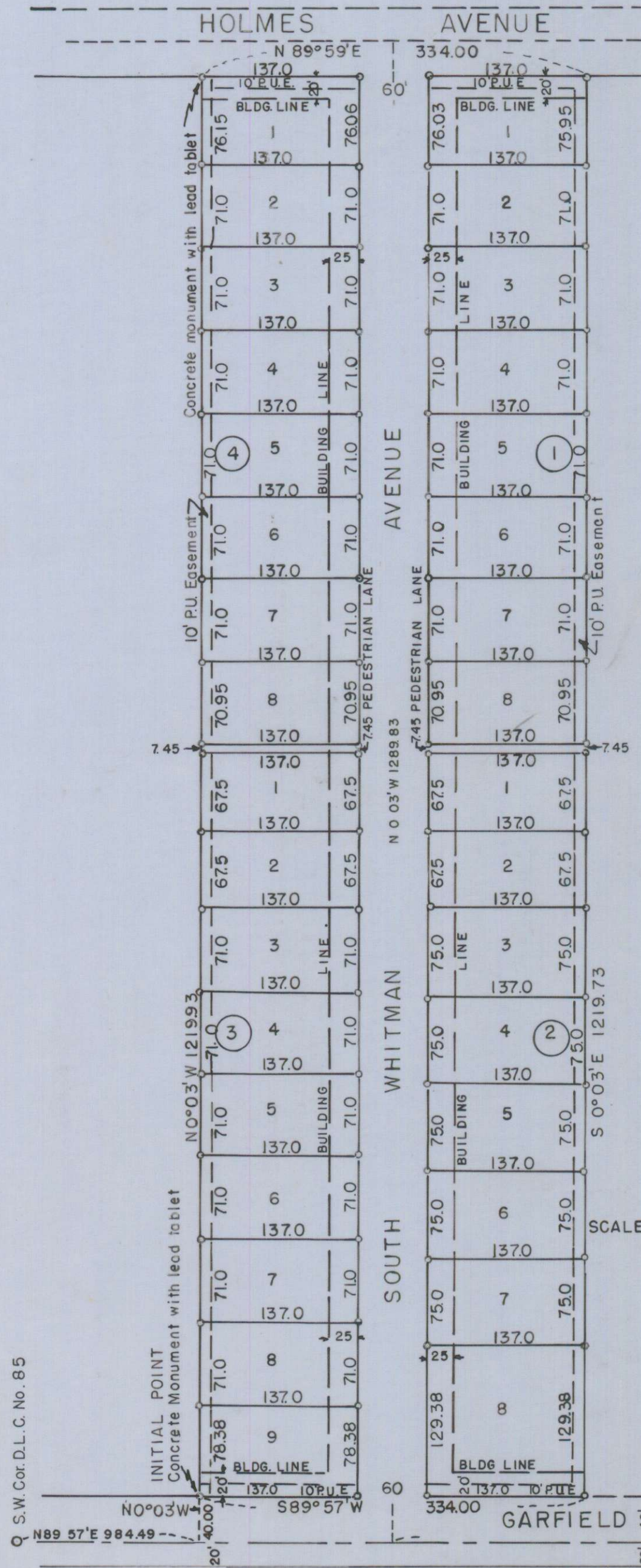


# COMICE VILLAGE SUBDIVISION

IN D.L.C. 45, T.37S.R.1W.(W.M.)  
JACKSON COUNTY, OREGON



### DEDICATION

KNOW ALL MEN BY THESE PRESENTS, That we, Walter J. Young and Dorothy A. Young, are the owners in fee simple of the lands hereon described, and that we have subdivided the same into lots, blocks and streets as shown hereon, and the number and size of the lots and lengths of all lines are plainly set forth, and that this plat is a correct representation of the said subdivision, and we do hereby dedicate to the public for public use all streets and alleys and easements for public utilities, shown hereon, and we do hereby designate said subdivision as COMICE VILLAGE SUBDIVISION.

IN WITNESS WHEREOF we have hereunto set our hands and seals this 20<sup>th</sup> day of April, 1956

Witness *Walter J. Young* SEAL  
Witness *Dorothy A. Young* SEAL

STATE OF OREGON } s.s.  
COUNTY OF JACKSON }  
A.D. 1956.

Personally appeared the above named Walter J. Young and Dorothy A. Young and acknowledged the foregoing instrument to be their voluntary act and deed Before me:

*Lep. C. Chandaquiff*  
NOTARY PUBLIC FOR OREGON.

My commission expires the 22<sup>nd</sup> day of January, 1960



### SURVEYOR'S CERTIFICATE

STATE OF OREGON } s.s.  
COUNTY OF JACKSON }

I, L.N. Dow, a duly registered surveyor of the State of Oregon, being first duly sworn do hereby certify that I have correctly surveyed and marked with proper monuments as provided by law the tract of land hereon shown and the said plat is a correct representation of the same, and the following is an accurate description of the boundary lines:

Beginning at a point on the north line of Garfield Road, said point of beginning being a concrete monument with lead tablet set six inches below the surface of the ground at a point N 89° 57' E (along the D.L.C. line) 984.49 feet, thence N 0° 03' W 40.00 feet from the southwest corner of Donation Land Claim No. 85, Township 37 South, Range 2 West, Willamette Meridian, Jackson County, Oregon; from this point of beginning thence N 0° 03' W 1219.93 feet to the south line of Holmes Avenue; thence N 89° 59' E along the south line of Holmes Avenue 334.00 feet, thence S 0° 03' E 1219.73 feet to the north line of Garfield Road; thence S 89° 57' W along the north line of Garfield Road 334.00 feet to the point of beginning.

*L. N. Dow*  
SURVEYOR

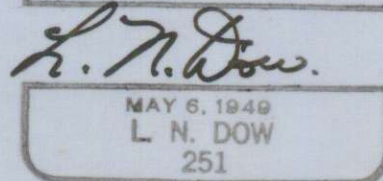
SCALE 1"=100'

Subscribed and sworn to before me this 20 day of April, 1956

*Neva G. Samuels*  
NOTARY PUBLIC FOR OREGON

My commission expires the 29 day of September, 1956

All lot corners are 5/8" x 30" Iron bars.  
Bearings from Solar observations.



Examined and approved by the City of Medford Planning Commission in regular session this the 23 day of APRIL, 1956

*Edward M. Keating* SECRETARY  
*M. Illway* PRESIDENT

Examined and approved by the Medford Irrigation District in regular session this the 3<sup>rd</sup> day of April, 1956

SECRETARY *J. G. Ashbaugh*  
PRESIDENT *Paul Culbertson*

Examined and approved this 23 day of APRIL, 1956

*Edward M. Keating*  
CITY ENGINEER

Examined and approved this 26 day of April, 1956

*Elva Jennings*  
COUNTY ASSESSOR

All taxes paid in full to date this the 26 day of April, 1956

*Howard Gault*  
COUNTY SHERIFF

Examined and recommended for approval of the County Court.

*Paul B. Symning*  
COUNTY SURVEYOR

For order of the County Court approving this plat see Volume 41, Page 670 of County Commissioners' Journal of Proceedings.

*Breth H. Hopkins*  
COUNTY CLERK

405479

Filed for record this 26 day of April, 1956, at 2:00 o'clock P. M. and recorded in 7 Volume of Plats at Page 40 of records of Jackson County, Oregon.

*Breth H. Hopkins*  
COUNTY RECORDER

I hereby certify that this tracing is an exact Copy of the original plat filed with the County Clerk.

*L. N. Dow*

S.W. Cor. D.L.C. No. 85