

GARFIELD SUBDIVISION

IN D.L.C. 45, T. 37S. R. 1 W. (W.M.)
JACKSON COUNTY, OREGON.

DEDICATION

KNOW ALL MEN BY THESE PRESENTS, That we, Russell W. George and Dorothy Wilma George, are the owners in fee simple of the lands hereon described, and that we have subdivided the same into lots, blocks and streets as shown hereon, and the number and size of the lots and lengths of all lines are plainly set forth, and that this plat is a correct representation of the said subdivision, and we do hereby dedicate to the public for public use all streets and alleys and easements for public utilities, shown hereon, and we do hereby designate said subdivision as GARFIELD SUBDIVISION.

IN WITNESS WHEREOF we have hereunto set our hands and seals this 8th day of November, 1955

Witness *Russell W. George* SEAL

Witness *Dorothy Wilma George* SEAL

STATE OF OREGON)
COUNTY OF JACKSON) s.s.

November 8 A.D. 1955

Personally appeared the above named Russell W. George and Dorothy Wilma George and acknowledged the foregoing instrument to be their voluntary act and deed. Before me:

Edward Stevens

NOTARY PUBLIC FOR OREGON

My commission expires the 2nd day of November, 1958

SURVEYOR'S CERTIFICATE

STATE OF OREGON)
COUNTY OF JACKSON) s.s.

I, L. N. Dow, a duly registered surveyor of the State of Oregon, being first duly sworn, do hereby certify that I have correctly surveyed and marked with proper monuments as provided by law the tract of land hereon shown and the said plat is a correct representation of the same, and the following is an accurate description of the boundary lines:

Beginning at a point on the north line of Garfield Road, said point of beginning being in D.L.C. 45, in Section 31, Township 37 South, Range 1 West, of the Willamette Meridian, Jackson County, Oregon, said point of beginning being a concrete monument with stamped lead tablet, buried six inches below the surface of the ground at a point N89°57'E (along the D.L.C. line) 1652.49 feet, thence N0°03'W 40.00 feet from the southwest corner of D.L.C. No. 85, Township 37 South, Range 2 West W.M.; from this beginning thence N0°03'W 1219.53 feet to the south line of Holmes Avenue, thence N89°59'E along the south line of Holmes Avenue 334.07 feet, thence S0°03'E 1219.33 feet to the north line of Garfield Road, thence S89°57'W along the north line of Garfield Road a distance of 334.07 feet to the point of beginning.

L. N. Dow
SURVEYOR

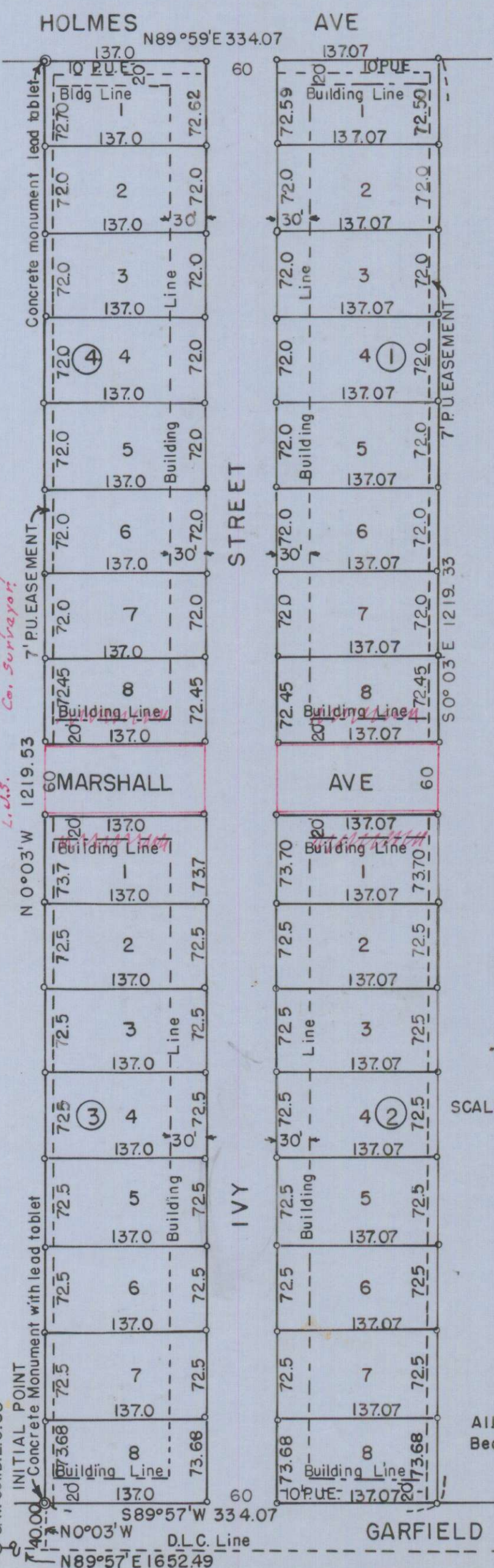
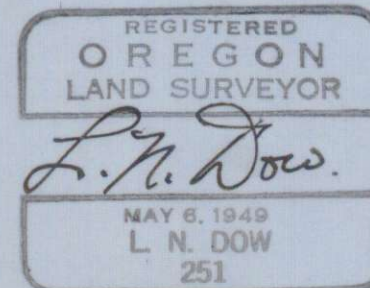
Subscribed and sworn to before me this 8th day of November, 1955.

Edward Stevens

NOTARY PUBLIC FOR OREGON

My commission expires the 2nd day of November, 1958

All lot corners are 5/8" x 30" Iron bars.
Bearings from solar observations



For Vacation of Building Lines & Street
See D.C. Vol. 425 - P. 413 & Vol. 428 - P. 19 & 20
5/11/56
Paul B. Symning
Co. Surveyor
L. N. Dow

Examined and approved by the City of Medford Planning Commission in regular session this the 14 day of NOVEMBER, 1955

Attest: SECRETARY *Edward M. McKinley* PRESIDENT *M. Wray*

Examined and approved by the Medford Irrigation District in regular session this the 7 day of February, 1956

SECRETARY *J. C. Ashbaker* PRESIDENT *Paul Culbertson*

Examined and approved this 14 day of NOVEMBER, 1955

Edward M. McKinley
CITY ENGINEER

Examined and approved this 11 day of Feb, 1956

R. A. Fowler
COUNTY ASSESSOR
Edna Jennings
Deputy

All taxes paid in full to date this the 11 day of February, 1956

Howard Gault
COUNTY SHERIFF

Examined and recommended for approval of the County Court.

Paul B. Symning
COUNTY SURVEYOR

For order of the County Court approving this plat see Volume Page of County Commissioners' Journal of Proceedings.

Bereth Hopkins
COUNTY CLERK

401480

Filed for record this 15 day of February, 1956, at 4:00 o'clock P.M. and recorded in 7 Volume of plats at Page 38 of records of Jackson County, Oregon.

Bereth Hopkins
COUNTY RECORDER

I hereby certify that this tracing is an exact copy of the original plat filed with the County Clerk.

L. N. Dow