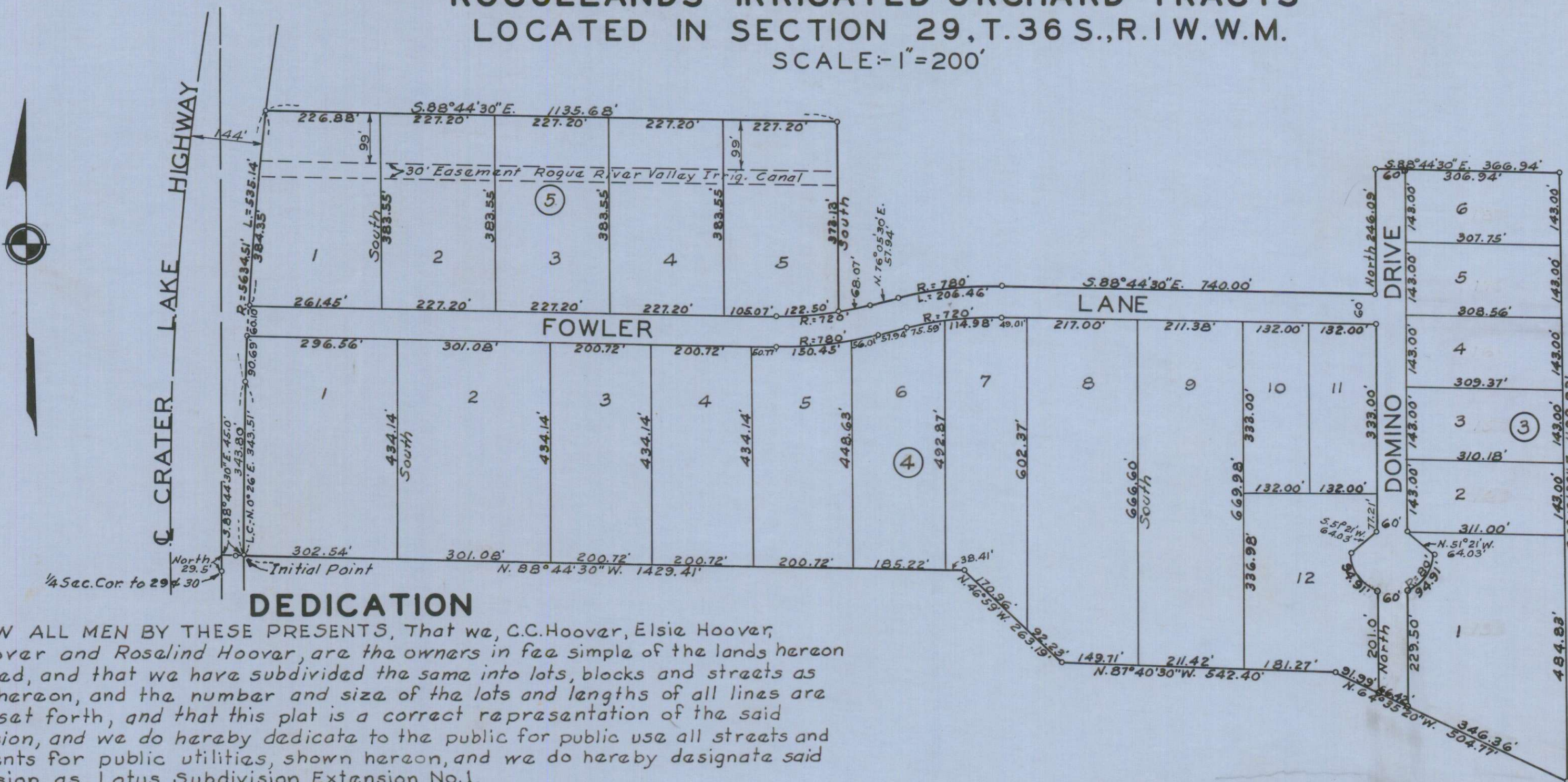


LOTUS SUBDIVISION EXTENSION NO. 1 BEING A PORTION OF LOTS 115 & 135 OF ROGUELANDS IRRIGATED ORCHARD TRACTS LOCATED IN SECTION 29, T.36 S., R.1 W. W.M.

SCALE: 1"=200'



I hereby certify that this tracing is an exact copy of the original plat filed with the County Clerk.

J. H. Clabby
Engineer



DEDICATION

KNOW ALL MEN BY THESE PRESENTS, That we, C.C. Hoover, Elsie Hoover, M.F. Hoover and Rosalind Hoover, are the owners in fee simple of the lands hereon described, and that we have subdivided the same into lots, blocks and streets as shown hereon, and the number and size of the lots and lengths of all lines are plainly set forth, and that this plat is a correct representation of the said subdivision, and we do hereby dedicate to the public for public use all streets and easements for public utilities, shown hereon, and we do hereby designate said subdivision as, Lotus Subdivision Extension No. 1.

IN WITNESS WHEREOF we have hereunto set our hands and seals this 20 day of October, 1955.

C. C. Hoover
Elsie Hoover
M. F. Hoover
Rosalind Hoover

STATE OF OREGON } ss.
County of Jackson }

October 20 A. D. 1955.

Personally appeared the above-named, C.C. Hoover, Elsie Hoover, M.F. Hoover and Rosalind Hoover, and acknowledged the foregoing instrument to be their voluntary act and deed. Before me,

Jorn Dow
Notary Public for Oregon

My commission expires the 7th day of October, 1957.

Examined and approved by the Central Point Planning Commission in regular session this the 10 day of October, 1955.

Attest: *Richard L. Dranger* Secretary, *M. H. Smith* President

Examined and approved by the Rogue River Valley Irrigation District in regular session this the 4th day of October, 1955.

Attest: *Donald W. Sinton* Secretary, *Otto Bohner* President

Examined and approved this 20 day of October, 1955.

W. S. Switzer
County Assessor

All taxes paid in full to date this the 20 day of October, 1955.

Howard Gault
County Sheriff

Examined and recommended for approval of the County Court.

Paul D. Rynning
County Surveyor

ENGINEER'S CERTIFICATE

STATE OF OREGON } ss.
County of Jackson }

I, J. H. Clabby, a duly registered engineer of the State of Oregon, being first duly sworn, do hereby certify that I have correctly surveyed and marked with proper monuments as provided by law the tract of land hereon shown and the said plat is a correct representation of the same, and the following is an accurate description of the boundary lines: Commencing at the quarter corner common to Sections 29 and 30, Township 36 South, Range 1 West, Willamette Meridian, Jackson County, Oregon; thence North 29.50 feet; thence S. 88° 44' 30" E., 45.00 feet to a point on a spiral curve to the right on the easterly right-of-way line and 144 feet from the center line of the Crater Lake Highway for the Initial Point a concrete monument with bronze disk; thence along said spiral curve 343.80 feet (the long chord of which bears N. 0° 26' E. 343.51 feet); thence along the arc of a 5634.51 foot radius curve to the right 535.14 feet (the long chord of which bears N. 4° 23' 40" E. 534.94 feet); thence S. 88° 44' 30" E. 1135.68 feet; thence South 373.13 feet; thence along the arc of a 720 foot radius curve to the left 68.07 feet (the long chord of which bears N. 78° 48' E. 68.05 feet); thence N. 76° 05' 30" E. 57.94 feet; thence along the arc of a 780 foot radius curve to the right 206.46 feet (the long chord of which bears N. 83° 42' 30" E. 205.89 feet); thence S. 88° 44' 30" E. 740.00 feet; thence North 246.09 feet; thence S. 88° 44' 30" E. 366.94 feet to the east line of Lot 115 of the Roguelands Irrigated Orchard Tracts; thence S. 0° 19' 30" E. 1199.83 feet along the east line of said Lot 115 & Lot 135 of said Tracts to the northeasterly corner of Lotus Subdivision; thence N. 64° 35' 20" W. 504.77 feet; thence N. 87° 40' 30" W. 542.40 feet; thence N. 46° 59' W. 263.19 feet; thence N. 88° 44' 30" W. 1429.41 feet to the Initial Point.

Subscribed and sworn to before me this 12th day of Sept., 1955. Engineer

Harmon T. Swain
Notary Public for Oregon

My Commission expires the 27th day of June, 1956.
For order of the County Court approving this plat see Volume 41, Page 30, of County Commissioners' Journal of Proceedings.

Beretha Hopkins
County Clerk

Filed for record this 3 day of Nov., 1955, at 10 o'clock A.M. and recorded in 7 Volume of plats at Page 36 of records of Jackson County, Oregon.

Beretha Hopkins
County Recorder