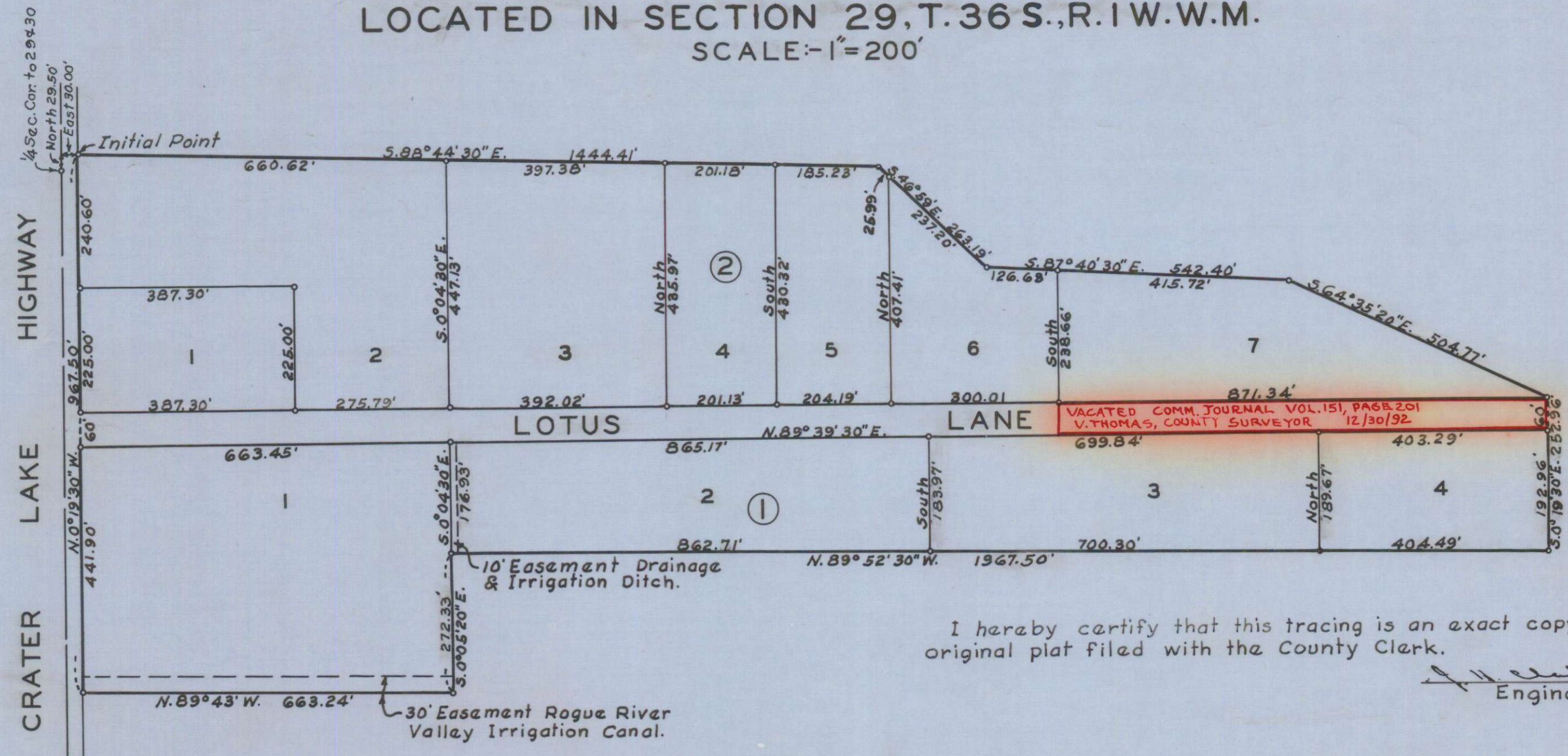


LOTUS SUBDIVISION
 BEING A PORTION OF LOTS 114 & 135 OF
 ROGUELANDS IRRIGATED ORCHARD TRACTS
 LOCATED IN SECTION 29, T.36 S., R.1 W., W.M.
 SCALE: 1"=200'



Meridian by Solar Observation.

I hereby certify that this tracing is an exact copy of the original plat filed with the County Clerk.

J. H. Clabby
 Engineer

DEDICATION

KNOW ALL MEN BY THESE PRESENTS, That we, C.C. Hoover, Elsie Hoover, M.F. Hoover and Rosalind Hoover, are the owners in fee simple of the lands hereon described, and that we have subdivided the same into lots, blocks and streets as shown hereon, and the number and size of the lots and lengths of all lines are plainly set forth, and that this plat is a correct representation of the said subdivision, and we do hereby dedicate to the public for public use all streets and easements for public utilities, shown hereon, and we do hereby designate said subdivision as, Lotus Subdivision.

IN WITNESS WHEREOF we have hereunto set our hands and seals this 26th day of May, 1955.

C. C. Hoover
Elsie Hoover
M. F. Hoover
Rosalind Hoover

STATE OF OREGON } ss.
 County of Jackson }

May 27 A.D. 1955.
 Personally appeared the above-named, C.C. Hoover, Elsie Hoover, M.F. Hoover and Rosalind Hoover, and acknowledged the foregoing instrument to be their voluntary act and deed. Before me:

Kenneth S. Deaman
 Notary Public for Oregon

My commission expires the 21st day of April, 1957.

Examined and approved by the Central Point Planning Commission in regular session this the 13 day of June, 1955.
 Attest: *Kenneth S. Deaman* Secretary
W. H. DeWitt President

Examined and approved by the Rogue River Valley Irrigation District in regular session this the 8 day of July, 1955.
 Attest: *Harold W. Sutton* Secretary
Otto Bohmert President

Examined and approved this 21 day of July, 1955.
V. S. Sawler
 County Assessor

ENGINEER'S CERTIFICATE

STATE OF OREGON } ss.
 County of Jackson }

I, J.H. Clabby, a duly registered engineer of the State of Oregon, being first duly sworn, do hereby certify that I have correctly surveyed and marked with proper monuments as provided by law the tract of land hereon shown and the said plat is a correct representation of the same, and the following is an accurate description of the boundary lines: Commencing at the quarter corner common to Sections 29 and 30, Township 36 South, Range 1 West, Willamette Meridian, Jackson County, Oregon; thence North 29.50 feet; thence East 30.00 feet to the Initial Point a Concrete Monument with bronze disk on the easterly right-of-way line of the Crater Lake Highway; thence 5.88° 44' 30" E. 1444.41'; thence 5.46° 59' E. 263.19 feet; thence S. 87° 40' 30" E. 542.40 feet; thence S. 64° 35' 20" E. 504.77 feet to the east line of Lot 135, Roguelands Irrigated Orchard Tracts; thence S. 0° 19' 30" E. 252.96 feet along said line to the southeast corner of Lot 135; thence North 89° 52' 30" W. 1967.50 feet along south line of said Lot 135; thence S. 0° 05' 20" E. 272.33 feet; thence N. 89° 43' W. 663.24 feet to said easterly right-of-way line; thence N. 0° 19' 30" W. along said line 967.50 feet to the Initial Point.



Subscribed and sworn to before me this 24th day of May, 1955.

Kenneth S. Deaman
 Notary Public for Oregon

My commission expires the 27th day of June, 1956.

All taxes paid in full to date this the 23 day of July, 1955.
Howard Gault
 County Sheriff

Examined and recommended for approval of the County Court.
Paul D. Kysning
 County Surveyor

For order of the County Court approving this plat see Volume 32, Page 715, of County Commissioners' Journal of Proceedings.
Brecht Hopkins
 County Clerk

Filed for record this 28 day of July, 1955, at 2:00 o'clock P.M. and recorded in 7 Volume of plats at Page 33 of records of Jackson County, Oregon.
Brecht Hopkins
 County Recorder