

GARDEN OF APOSTLES, GARDEN OF MEMORY & GARDEN OF DEVOTION
OF
MEMORY GARDENS MEMORIAL PARK
LOCATED IN SECTION 34, T. 37 S., R. 2 W., W. M.

DEDICATION

Know All Men By These Presents That Memory Gardens Memorial Park Incorporated, an Oregon corporation, being the owner in fee simple of the lands described hereon, has caused the same to be surveyed and set apart for cemetery purposes, all of which is correctly shown by the plat hereon, and has designated said plat Garden of Apostles, Garden of Memory & Garden of Devotion of Memory Gardens Memorial Park.

In Witness Whereof said Memory Gardens Memorial Park Incorporated, has caused these presents to be executed by its President and Secretary who have hereunto set their hands and seals this

18 day of March, 1955.
Attest: Wm. S. Ferris Secretary Carroll W. Smith President

STATE OF OREGON } ss.
County of Jackson }

March 18 A.D. 1955.
Personally appeared the above-named Carroll W. Smith, President and William S. Ferris, Secretary of the Memory Gardens Memorial Park Incorporated, and acknowledged the foregoing instrument to be their voluntary act and deed. Before me.

Mydala Neil
Notary Public for Oregon
My commission expires the 23rd day of November, 1956.

Examined and approved this 13 day of May, 1955.
R. S. Dausler
County Assessor

Examined and recommended for approval of the County Court.
Paul B. Symington
County Surveyor

For order of the County Court approving this plat see
Volume 38, Page 222, of County Commissioners' Journal of Proceedings.
Bertha Hopkiss
County Clerk

SURVEYOR'S CERTIFICATE

STATE OF OREGON } ss.
County of Jackson }

I, Edward A. McGinty, a duly registered surveyor of the State of Oregon, being first duly sworn, do hereby certify that I have correctly surveyed and marked with proper monuments as provided by law the tract of land hereon shown and the said plat is a correct representation of the same, and the following is an accurate description of the boundary lines:

Commencing at the southwest corner of D.L.C. No. 78, Township 37 South, Range 2 West, Willamette Meridian, Jackson County, Oregon; Thence N. 0° 16' W. along West line of said D.L.C. 1145.22 feet; Thence East 20.0 feet to the Initial Point a concrete monument with bronze disc; Thence East 89.43 feet; Thence S. Ely along arc having radius 29.49 feet a distance 47.58 feet (Long chord bears S. 43° 46 1/2' E. a distance of 42.59 feet) to a point of cusp; Thence N. Ely along arc having radius of 60 feet, a distance of 94.51 feet (Long chord bears N. 47° 34 1/2' E., 85.04 feet); Thence S. 87° 18' E. 36.79 feet; Thence S. Ely along an arc having a radius of 130 feet a distance 78.23 feet (Long chord bears S. 70° 03' 40" E., 77.05 feet); Thence S. 52° 49' 20" E. 50.80 feet; Thence S. Ely on an arc having radius 400 feet a distance of 97.02 feet (Long chord bears S. 45° 52' 25" E. 96.78 feet); Thence S. 38° 55 1/2' E. 65.21 feet; Thence Sly on an arc having radius of 60 feet, a distance 68.71 feet (long chord bears S. 6° 07' 05" E. 65.02 feet) to a point of cusp; Thence N. Ely on an arc having a radius of 15.20 feet, a distance of 16.79 feet (long chord bears N. 58° 20' 40" E. 15.95 feet; Thence East 11.43 feet; Thence S. Ely on an arc having radius 15.00 feet a distance 23.56 feet (long chord bears S. 45° 00' E. 21.21 feet); Thence South 355.00 feet; Thence West 227.13 feet to a point on a curve having radius 428 feet; Thence Sly on an arc a distance of 83.66 feet (long chord bears S. 4° 36' E. 83.53 feet); Thence S. 1° 00' W. 18.74 feet; Thence West 284.78 feet; Thence N. 0° 16' W. 678.50 feet; Thence East 20.0 feet to the Initial Point.

Edward A. McGinty
Surveyor
Subscribed and sworn to before me this 12th day of March, 1955.
Mydala Neil
Notary Public for Oregon
My commission expires the 23rd day of November, 1956.

386134
Filed for record this the 20 day of May, 1955, at 2:00 o'clock P.M. and recorded in 7 Volume of Plats at page 28 of records of Jackson County, Oregon.

Bertha Hopkiss
County Recorder

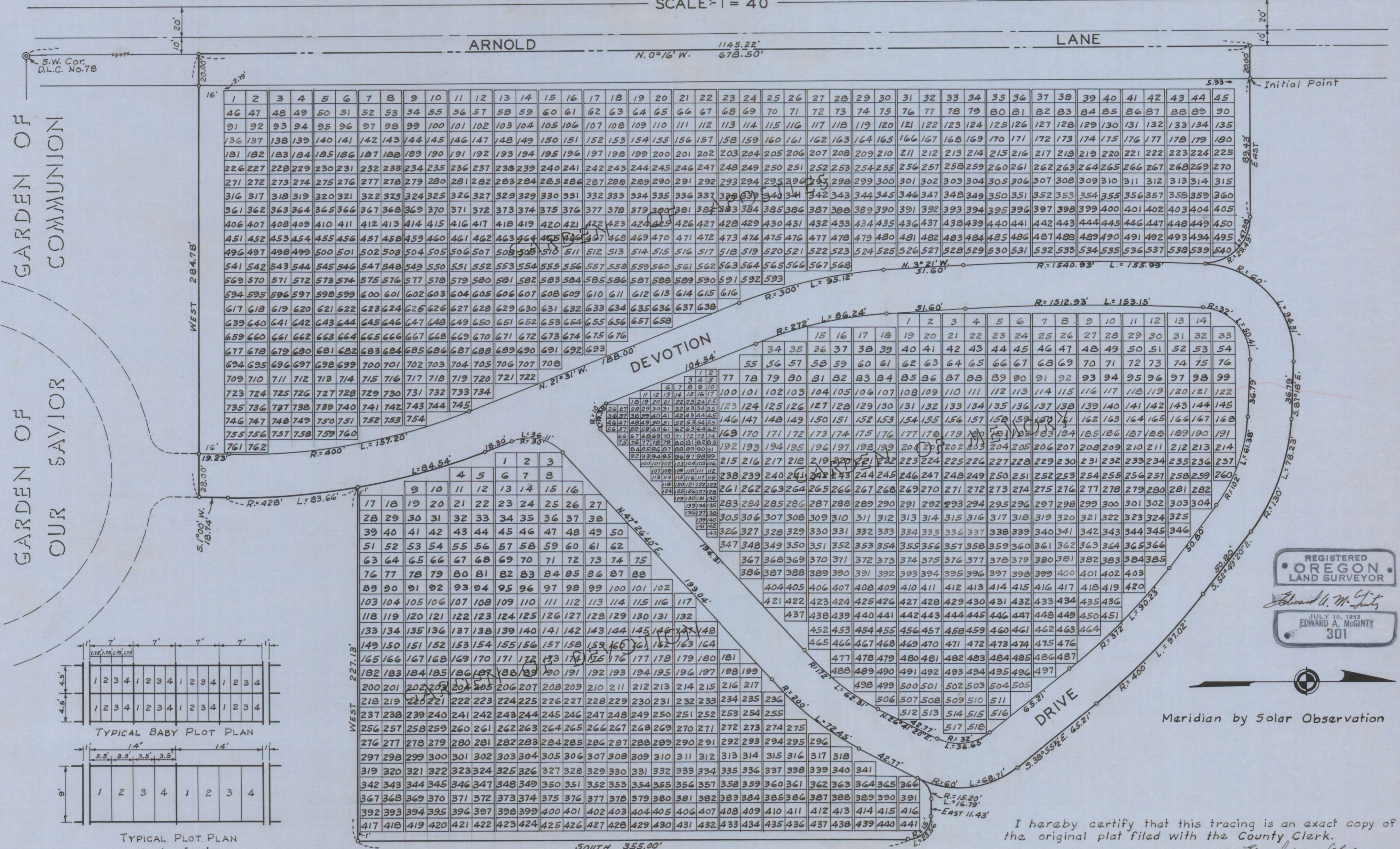
I hereby certify that this tracing is an exact copy of the original plat filed with the County Clerk.

Edward A. McGinty
Surveyor

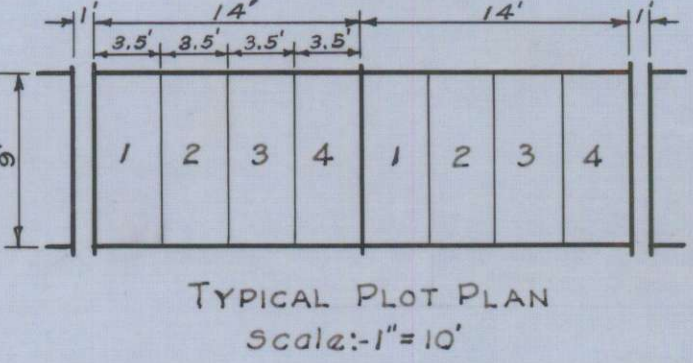
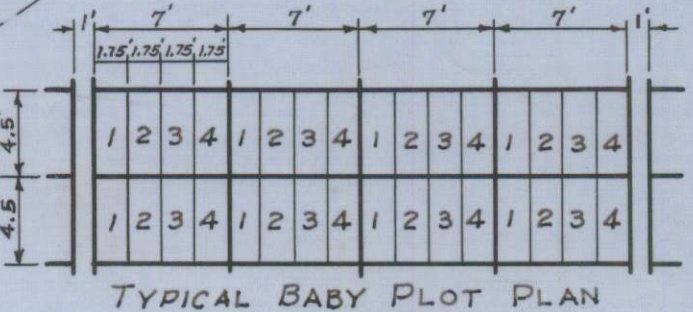


**GARDEN OF APOSTLES, GARDEN OF MEMORY & GARDEN OF DEVOTION
OF
MEMORY GARDENS MEMORIAL PARK
LOCATED IN SECTION 34, T. 37 S., R. 2 W. W. M.**

SCALE: 1" = 40'



GARDEN OF APOSTLES
GARDEN OF MEMORY
GARDEN OF DEVOTION
GARDEN OF OUR SAVIOR



REGISTERED
OREGON
LAND SURVEYOR
Edward A. McGinty
JULY 10, 1933
EDWARD A. MCGINTY
301



I hereby certify that this tracing is an exact copy of the original plat filed with the County Clerk.

Edward A. McGinty
Surveyor