

SUBDIVISION OF BLOCK 5 EXTENSION OF SISKIYOU HEIGHTS ADDITION TO THE CITY OF MEDFORD, JACKSON COUNTY, OREGON

DEDICATION

KNOW ALL MEN BY THESE PRESENTS, That we the T.J.Hight Agency Incorporated, are the owners in fee simple of the lands hereon described, and that we have subdivided the same into lots blocks and streets as shown hereon, and the number and size of the lots and lengths of all lines are plainly set forth, and that this plat is a correct representation of the said subdivision, and we do hereby dedicate to the public for public use all streets and alleys and easements for public utilities, shown hereon, and we do hereby designate said subdivision as Subdivision of Block 5 Extension of Siskiyou Heights Addition to the City of Medford

IN WITNESS WHEREOF we have hereunto set our hands and seals this 7th day of April, 1955

Witness *C.C. Vandagriff* VICE PRESIDENT SEAL

Witness *Juanita McCurry* SECRETARY SEAL

STATE OF OREGON }
COUNTY OF JACKSON } s.s.
A.D. 1955

Personally appeared the above named T.J.Hight Agency Inc. represented by C.C.Vandagriff, Vice President, and Juanita McCurry Secretary, and acknowledged the foregoing instrument to be their voluntary act and deed before me.

Nora G. Samuels
NOTARY PUBLIC FOR OREGON

My commission expires the 29th day of September, 1956

SURVEYOR'S CERTIFICATE

STATE OF OREGON }
COUNTY OF JACKSON } s.s.

I, L.N.Dow, a duly registered surveyor of the State of Oregon, being first duly sworn, do hereby certify that I have correctly surveyed and marked with proper monuments as provided by law the tract of land hereon shown and the said plat is a correct representation of the same, and the following is an accurate description of the boundary lines:

Beginning at a concrete monument with brass plate at the southeast corner of Block 5 Extension of Siskiyou Heights Addition to the City of Medford, Jackson County, Oregon, said point of beginning being North 900.64 feet, and West 783.18 feet, from the 1/4 section corner on the east line of Section 29, Township 37 South, Range 1 West, Willamette Meridian, Jackson County, Oregon, thence N89°42'30"W along the south line of said Block 5, 507.16 feet to the southwest corner thereof, thence N15°08'E 85.86 feet, thence S89°42'30"E 171.54 feet, thence N0°19'30"E 91.00 feet, thence N89°42'30"W 147.48 feet, thence N15°08'E 211.01 feet, thence on the arc of a 713.80 foot radius curve to the left (the long chord of which curve bears N10°57'E 104.12 feet) a distance of 104.15 feet, thence N6°46'E 11.47 feet, thence S89°44'30"E 210.82 feet, thence N0°04'W 190.2 feet; to the south line of East Main Street, thence S89°44'30"E 172.54 feet, thence S0°04'E 682.1 feet to the point of beginning.

L.N. Dow
SURVEYOR

Subscribed and sworn to before me this 7th day of April, 1955

Juanita S. McCurry
NOTARY PUBLIC FOR OREGON

My commission expires the 27 day of May, 1955

Examined and approved by the City of Medford Planning Commission in regular session this the 11 day of APRIL, 1955

Attest:

SECRETARY *Edward M. McKinley* PRESIDENT *M. Illrey*

Examined and approved by the Medford Irrigation District in regular session this the day of , 1955

Attest:

SECRETARY PRESIDENT

Examined and approved this 12 day of APRIL, 1955

Edward M. McKinley
CITY ENGINEER

Examined and approved this 17 day of May, 1955

V.P. G. Dawler
COUNTY ASSESSOR

All taxes paid in full to date this the 17 day of May, 1955

Howard Gault
COUNTY SHERIFF

Examined and recommended for approval of the County Court

Paul W. Symington
COUNTY SURVEYOR

For order of the County Court approving this plat see Volume 38, Page 220, of County Commissioner's Journal of Proceedings.

385987

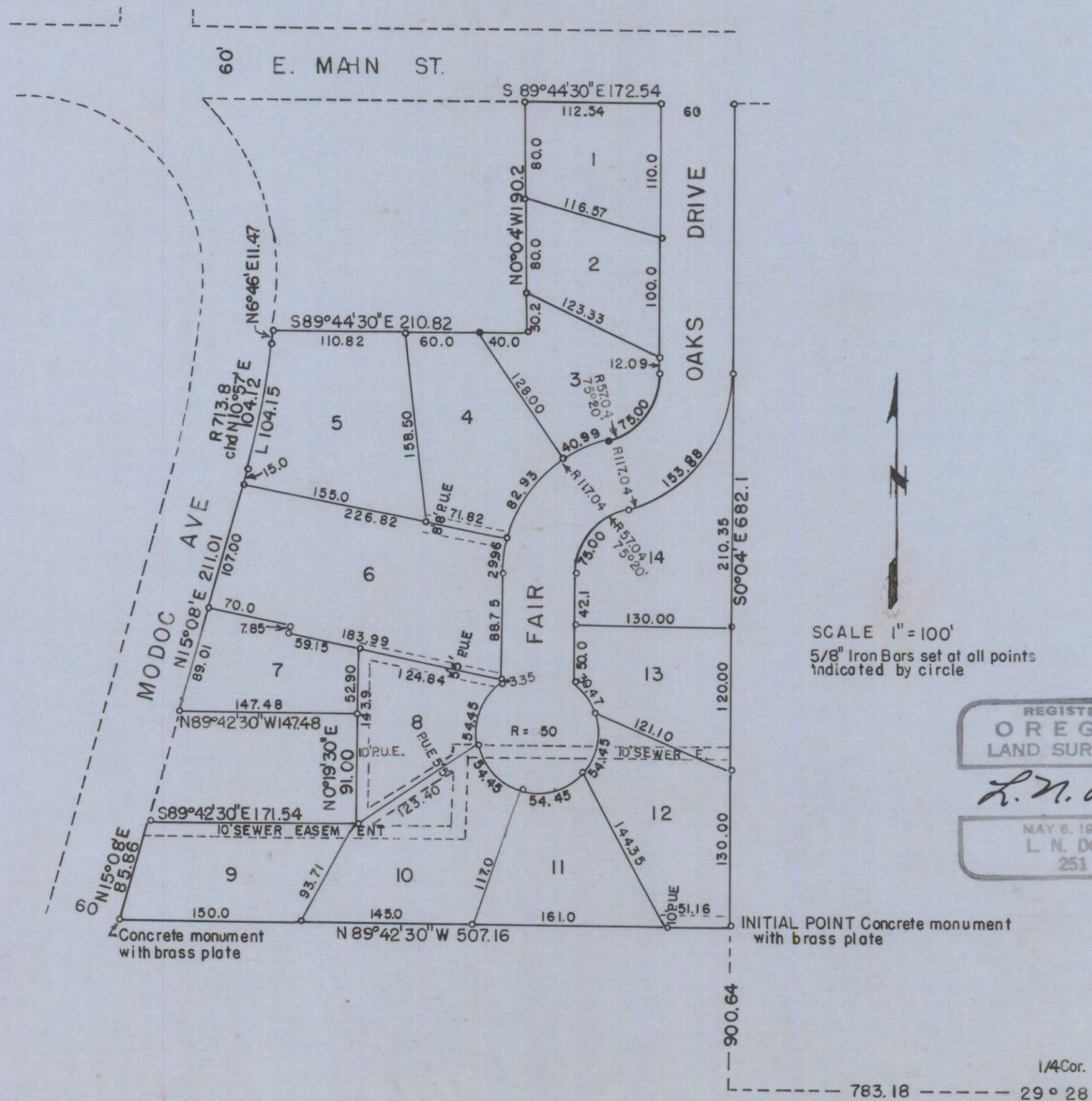
Bertha Hopkins
COUNTY CLERK

Filed for record this the 18 day of May, 1955, at 4:00 o'clock P.M. and recorded in 7 Volume of Plats at Page 27 of records of Jackson County, Oregon.

Bertha Hopkins
COUNTY RECORDER

I hereby certify that this tracing is an exact copy of the original plat filed with the County Clerk.

L.N. Dow



1/4 Cor.

783.18 29° 28'