

# CENTRAL VALLEY SUBDIVISION UNIT NO. 3

LOCATED IN D.L.C. NO. 54, SEC. 10, T. 37S., R. 2W., W.M.  
JACKSON COUNTY, OREGON

## DEDICATION

KNOW ALL MEN BY THESE PRESENTS, That we Myron E. Corcoran and Esther A. Corcoran are the owners in fee simple of the lands hereon described and that we have subdivided the same into lots, blocks, and streets as shown hereon, and the number and size of the lots and the length of all lines are plainly set forth, and that this plat is a correct representation of the said subdivision, and we do hereby dedicate to the public for public use all streets and utility easements, shown hereon, and we do hereby designate said subdivision as, CENTRAL VALLEY SUBDIVISION UNIT NO. 3.

IN WITNESS WHEREOF, we have set our hands and seals this 12<sup>th</sup> day of January, 1966.

*Myron E. Corcoran*  
MYRON E. CORCORAN

*Esther A. Corcoran*  
ESTHER A. CORCORAN

STATE OF OREGON } ss

County of Jackson }

January 12<sup>th</sup> A.D. 1966

Personally appeared the above named Myron E. Corcoran and Esther A. Corcoran and acknowledged the foregoing instrument to be their voluntary act and deed.  
Before me:

*Margie A. Hack*  
Notary Public for Oregon

My Commission expires the 4 day of October, 1966.

Examined and approved by the City of Central Point Planning Commission in regular session this 21<sup>st</sup> day of December, 1965.

*Robert C. Lentzer*  
Secretary

*Harry E. Tom*  
President

Examined and approved by the Rogue River Valley Irrigation District in regular session this 7 day of Dec., 1965.

*Harold M. Sexton*  
Secretary

*Otto Bohneit*  
President

Examined and approved this 25 day of March, 1966.

*Thad W. Hatten*  
County Assessor

All taxes paid in full to date this the 20 day of March, 1966.

*St. Harold Sig*  
County Sheriff

Examined and recommended for approval by the County Court this the 19<sup>th</sup> day of May, 1966.

*W. E. Boyden*  
County Surveyor

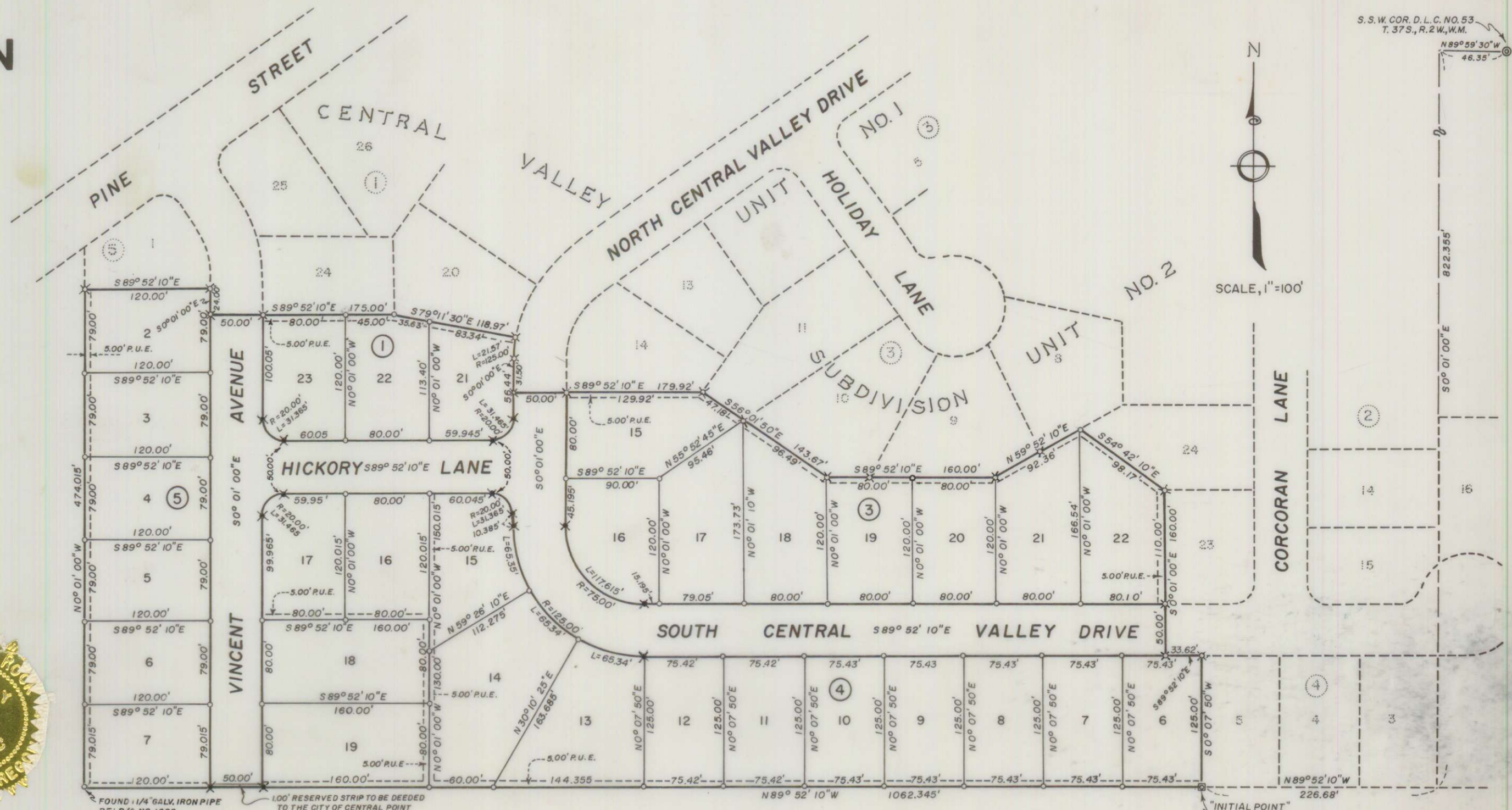
For order of the County Court approving this plat see Volume 63 page 810 of County Commissioners Journal of Proceedings.

By *Emmadel*  
Deputy County Clerk

Filed for record this the 26 day of May, 1966, at 2:36 O'Clock P. M and recorded in Volume 10 of plats at page 36 of Records of Jackson County, Oregon.

*Emmadel*  
County Clerk

By \_\_\_\_\_  
Deputy



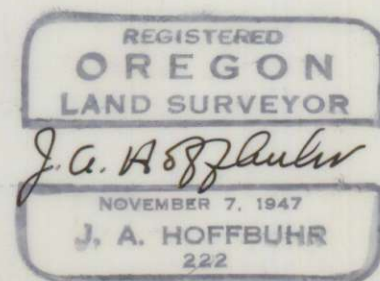
### NOTE:

- ⊕ SET 5/8" X 36" IRON REINF. PINS.
- ⊙ SET 5/8" X 24" IRON REINF. PINS.
- ⊗ FOUND 5/8" IRON REINF. PINS.

BASIS OF BEARING - PER CENTRAL VALLEY SUBDIVISIONS, UNITS 1 & 2 (RECORDED)  
(FOR ADDITIONAL UTILITY EASEMENTS REFER TO DECLARATION OF RESTRICTIVE COVENANTS FILED WITH THIS PLAT)

I hereby certify that this tracing is an exact copy of the original plat filed with the County Clerk.

*J. A. Hoffbuhr*  
Surveyor



## SURVEYOR'S CERTIFICATE

STATE OF OREGON } ss  
County of Jackson }

I, J. A. Hoffbuhr a duly registered Surveyor of the State of Oregon, being first duly sworn, do hereby certify that I have correctly surveyed and marked with the proper monuments as provided by law the tract of land hereon shown and the said plat is a correct representation of the same, and the following is an accurate description of the boundary lines:

COMMENCING AT THE SOUTH - SOUTHWEST CORNER OF DONATION LAND CLAIM NO. 53, TOWNSHIP 37 SOUTH, RANGE 2 WEST, WILLAMETTE MERIDIAN, JACKSON COUNTY, OREGON; THENCE NORTH 89° 59' 30" WEST 46.35 FEET; THENCE SOUTH 0° 01' 00" EAST 822.355 FEET; THENCE NORTH 89° 52' 10" WEST 226.68 FEET TO A BRASS DISC SET IN CONCRETE FOR THE INITIAL POINT (SAID POINT BEING THE MOST SOUTHERLY SOUTHWEST CORNER OF CENTRAL VALLEY SUBDIVISION UNIT NO. 2 (RECORDED) AND THE TRUE POINT OF BEGINNING; THENCE CONTINUING NORTH 89° 52' 10" WEST 1062.345 FEET; THENCE NORTH 0° 01' 00" WEST 474.015 FEET TO INTERSECT THE BOUNDARY OF CENTRAL VALLEY SUBDIVISION UNIT NO. 2 (RECORDED); THENCE ALONG THE AFOREMENTIONED BOUNDARY LINE AS FOLLOWS: SOUTH 89° 52' 10" EAST 120.00 FEET, SOUTH 0° 01' 00" EAST 24.00 FEET, SOUTH 89° 52' 10" EAST 175.00 FEET, SOUTH 79° 11' 30" EAST 118.97 FEET TO A POINT OF CURVE ON THE WESTERLY RIGHT OF WAY LINE OF NORTH CENTRAL VALLEY DRIVE; THENCE ALONG THE ARC OF A 125.00 FOOT RADIUS CURVE TO THE LEFT, 21.57 FEET (THE LONG CHORD WHICH BEARS SOUTH 4° 55' 35" WEST 21.54 FEET) TO A POINT OF TANGENT; CONTINUING, SOUTH 0° 01' 00" EAST 31.50 FEET, SOUTH 89° 52' 10" EAST 179.92 FEET, SOUTH 56° 01' 50" EAST 143.67 FEET, SOUTH 89° 52' 10" EAST 160.00 FEET, NORTH 59° 52' 10" EAST 92.36 FEET, SOUTH 54° 42' 10" EAST 98.17 FEET, SOUTH 0° 01' 00" EAST 160.00 FEET, SOUTH 89° 52' 10" EAST 33.62 FEET, SOUTH 0° 07' 50" WEST 125.00 FEET TO THE INITIAL POINT AND THE TRUE POINT OF BEGINNING, EXCEPTING THEREFROM THE 1-FOOT RESERVED STRIP OFF THE SOUTH END OF VINCENT AVENUE AS SHOWN HEREON

*J. A. Hoffbuhr*  
Surveyor

Subscribed and sworn to before me this 15<sup>th</sup> day of January, 1966.

*Clifford E. Lewis*  
Notary public for Oregon

My commission expires the 28<sup>th</sup> day of December, 1966.

