

BUSH STREET SUBDIVISION

LOCATED IN BLOCK 28 CENTRAL POINT
JACKSON COUNTY, OREGON

DEDICATION

KNOW ALL MEN BY THESE PRESENTS, That we, Thomas E. Whittle and Dorothy D. Whittle, are owners in fee simple of the lands hereon described, and that we have subdivided the same into lots, blocks and streets as shown hereon, and the number and size of the lots and lengths of all lines are plainly set forth, and that this plat is a correct representation of the said subdivision, and we do hereby dedicate to the public for public use all streets and alleys and easements for public utilities, shown hereon, and we do hereby designate said subdivision as BUSH STREET SUBDIVISION

IN WITNESS WHEREOF we have hereunto set our hands and seals this 19 day of August 1954

Witness *Thomas E. Whittle* SEAL

Witness *Dorothy D. Whittle* SEAL

STATE OF OREGON)
) s.s.
COUNTY OF JACKSON)

Personally came before me, a notary public in and for said County and State, the above named Thomas E. Whittle and Dorothy D. Whittle of said State and County, to me personally known to be the above named, and executed the above instrument and who acknowledged to me that they did the same freely and voluntarily.

Dated this 19 day of August, 1954.

My commission expires the 27 day of May 1955. *Juanita S. McCurry* NOTARY PUBLIC FOR OREGON

SURVEYOR'S CERTIFICATE

STATE OF OREGON)
) s.s.
COUNTY OF JACKSON)

I, L. N. Dow, a duly registered surveyor of the State of Oregon, being first duly sworn do hereby certify that I have correctly surveyed and marked with proper monuments as provided by law (the initial point being a concrete monument with plate buried six inches below the surface) the tract of land hereon shown and the said plat is a correct representation of the same. The following is an accurate description of the boundary lines:

Beginning at a concrete monument on the southerly line of Bush Street, said point of beginning being S 54° 53' W 165.0 feet from the northeast corner of Block 28, Central Point, Oregon, said point of beginning being North 402.94 feet and West 999.91 feet from the southwest corner of D.L.C. No. 56, in Township 37 South, Range 2 West, Willamette Meridian, Jackson County, Oregon. From this beginning point thence S 54° 53' W 336.20 feet; thence S 35° 10' E 110.0 feet; thence N 54° 53' E 336.20 feet; thence N 35° 10' W 110.0 feet to the point of beginning.

L. N. Dow
SURVEYOR

Subscribed and sworn to before me this 18 day of August 1954. *Juanita S. McCurry*

NOTARY PUBLIC FOR OREGON.

My commission expires the 27 day of May 1955

Examined and approved by the City of Central Point Planning Commission in regular session this the 9th day of August 1954

Attest: *Edward D. Dymally* SECRETARY

M. H. Askinith PRESIDENT

Examined and approved this 7th day of September 1954

R. S. Fowler
COUNTY ASSESSOR
By *Elva Jennings*, Deputy

All taxes paid in full to date this the 8th day of September 1954

Howard Gault
COUNTY SHERIFF

Examined and recommended for approval of the County Court.

Paul B. Dymally
COUNTY SURVEYOR

For order of the County Court approving this plat see Volume 37, Page 569 of County Commissioner's Journal Of Proceedings.

372373

Filed for record this the 15 day of Sept. 1954, at 3:00 o'clock P.M. and recorded in Volume 7 of Plats at page 20 of records of Jackson County, Oregon.

Bereth P. Hopkins
COUNTY CLERK
By *Anton Carter*, Deputy

Bereth P. Hopkins
COUNTY RECORDER
By *Anton Carter*, Dep.

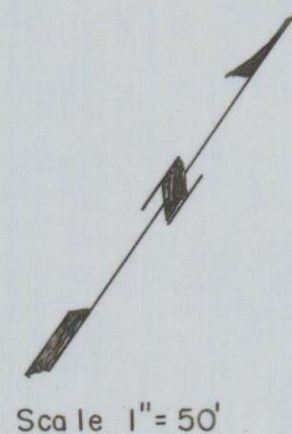
I hereby certify that this tracing is an exact copy of the original plat filed with the County Clerk.

L. N. Dow
SURVEYOR

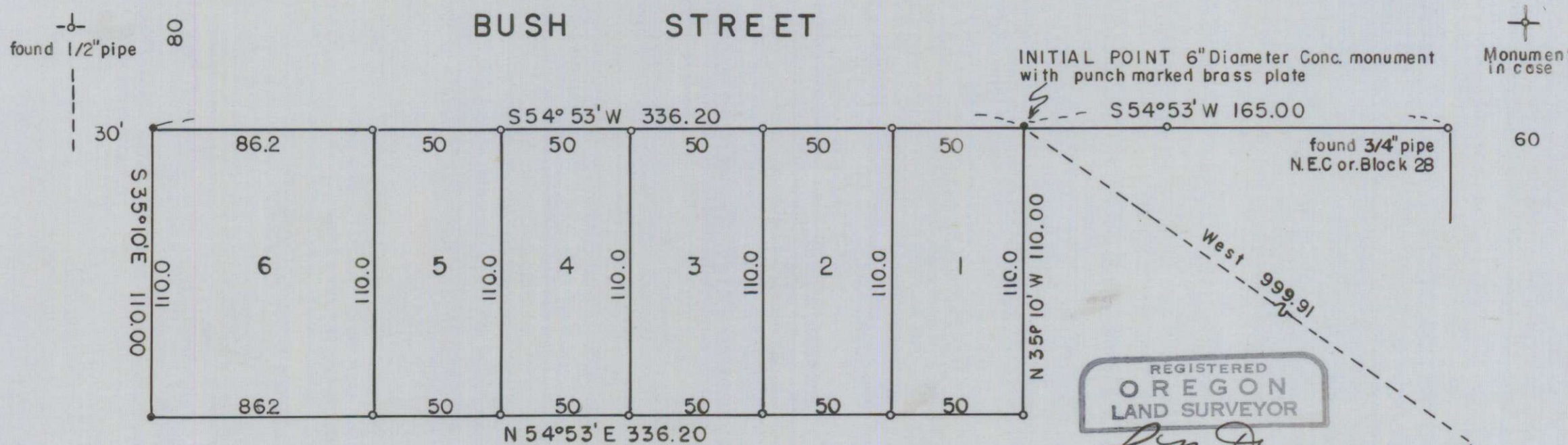


SECOND ST.
60

Bearings Solar
Date Aug 15, 1954
Time 3:45 1/2 P.M.
Lat. 42° 22' 14"
Long 122° 54' 33"
Vertical Angle 37° 02'
Horiz Angle 18° 55 1/2' Lt.
Taken on Initial point



FOURTH ST.
60



Solid circles are monuments set
Open circles are monuments found

REGISTERED
OREGON
LAND SURVEYOR
L. N. Dow
MAY 6, 1949
L. N. DOW
251

© S.W. Cor. D.L.C. No. 56
Iron bar found.