

WEST SIDE HEIGHTS ADDITION No. 2

LOCATED IN S. 36, T. 37 S., R. 2 W., (W.M.)
JACKSON COUNTY, OREGON.

DEDICATION

SURVEYOR'S CERTIFICATE

KNOW ALL MEN BY THESE PRESENTS, That we D.A. Parker and Kathleen B. Parker, are owners in fee simple of the lands hereon described, and that we have subdivided the same into lots, blocks and streets as shown hereon, and the number and size of the lots and lengths of all lines are plainly set forth, and that this plat is a correct representation of the said subdivision, and we do hereby dedicate to the public for public use all streets and alleys and easements for public utilities, shown hereon, and we do hereby designate said subdivision as WEST SIDE HEIGHTS ADDITION NO. 2.

IN WITNESS WHEREOF we have hereunto set our hands and seals this 2nd day of July 1954
Witness *D.A. Parker* SEAL
Witness *Kathleen B. Parker* SEAL

STATE OF OREGON }
COUNTY OF JACKSON } s.s.

Personally came before me, a notary public in and for said County and State, the above named D.A. Parker and Kathleen B. Parker of said State and County, to me personally known to be the above named, and executed the above instrument and who acknowledged to me that they did the same freely and voluntarily.

Dated this 2nd day of July, 1954.

My commission expires the 17th day of April 1957

Mark A. Goldy
NOTARY PUBLIC FOR OREGON.

STATE OF OREGON }
COUNTY OF JACKSON } s.s.

I, L.N. Dow, a duly registered surveyor of the State of Oregon, being first duly sworn do hereby certify that I have correctly surveyed and marked with proper monuments as provided by law (the initial point being a concrete monument with brass plate buried six inches below the surface) the tract of land hereon shown and the said plat is a correct representation of the same. The following is an accurate description of the boundary lines:

Beginning at a concrete monument with brass plate on the west line of Plum Street, said monument being N0°15'W 840.03 feet; thence N89°56'W 30.00 feet from the north west corner of Donation Land Claim No. 84, Township 37 South, Range 2 West, Willamette Meridian, Jackson County, Oregon; thence N89°56'W 497.30 feet; thence North 322.00 feet; thence S89°56'E 525.90 feet; thence S0°15'E 322.00 feet; thence N89°56'W 30.00 feet to the point of beginning.

L. N. Dow
SURVEYOR

Subscribed and sworn to before me this 1st day of July 1954

My commission expires the 29th day of September 1956
Neva G. Samuels
NOTARY PUBLIC FOR OREGON

Examined and approved by the City of Medford Planning Commission in regular session this the 9 day of August 1954

Attest: *Edward D. McKinstry* SECRETARY
M. Wray PRESIDENT

Examined and approved by the Medford Irrigation District in regular session this the 10 day of August 1954

Attest: *J. G. Hofflander* SECRETARY
Paul Culbertson PRESIDENT

Examined and approved this 12 day of August 1954

V. E. Dowler
COUNTY ASSESSOR

All taxes paid in full to date this the 12 day of August 1954

Howard Gault
COUNTY SHERIFF

Examined and recommended for approval of the County Court

Paul B. Rynning
COUNTY SURVEYOR

For order of the County Court approving this plat see Volume 37, Page 532, of County Commissioner's Journal Of Proceedings 370664

Brecht Hopkins
COUNTY CLERK

Filed for record this the 13 day of Aug., 1954, at 3:00 o'clock P. M. and recorded in Volume 7 of Plats at page 19 of records of Jackson County, Oregon.

Brecht Hopkins
COUNTY RECORDER

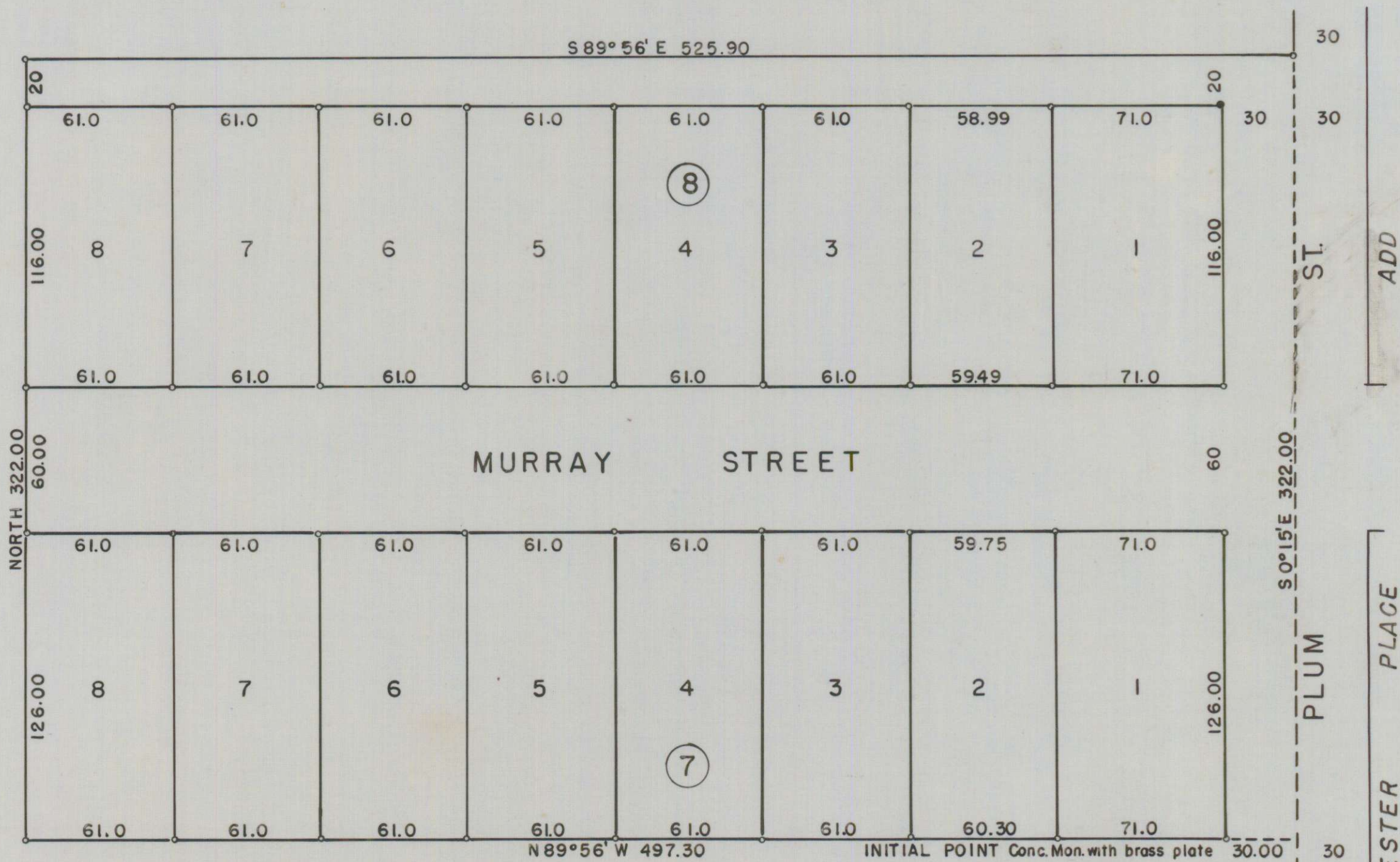
I hereby certify that this tracing is an exact copy of the original plat filed with the County Clerk

REGISTERED
OREGON
LAND SURVEYOR

L. N. Dow
SURVEYOR

L. N. Dow

MAY 6, 1949
L. N. DOW
251



WEST SIDE HEIGHTS ADD. No. 1

Scale 1" = 50'
5/8" x 30" Iron bars set at all corners
Bearings from Solar Observations taken 1952

N.W. Cor. D.L. C. No. 84
STEWART AVE.