

JESKA SUBDIVISION

PORTION OF LOT 4, BELLEVUE TRACTS, ASHLAND, OREGON.
DATE: JANUARY 10, 1966

SCALE: 1" = 100'

DEDICATION

KNOW ALL MEN BY THESE PRESENTS that we, Marvin E. Jeska, Janet F. Jeska and Helena Edghill are the owners in fee simple of the lands hereon described and that we have subdivided the same into lots, blocks and streets as shown hereon, and the number and size of the lots, blocks and the length of all lines are plainly set forth and the width of all easements are plainly shown, and that this plat is a correct representation of the said subdivision, and we do hereby dedicate to the public for public use all streets and easements hereon shown and we do hereby designate said subdivision as JESKA SUBDIVISION.

IN WITNESS WHEREOF we have set our hands and seals this 14th day of January 1966

Marvin E. Jeska Janet F. Jeska Helena Edghill

STATE OF OREGON } ss
County of Jackson }
January 14 AD 1966

Personally appeared the above named Marvin E. Jeska, Janet F. Jeska and Helena Edghill and acknowledged the foregoing instrument to be their voluntary act and deed. Before me,

Maxine C. Hoehner
Notary Public for Oregon

My Commission expires the 13th day of April 1966

SURVEYOR'S CERTIFICATE

STATE OF OREGON } ss
County of Jackson }

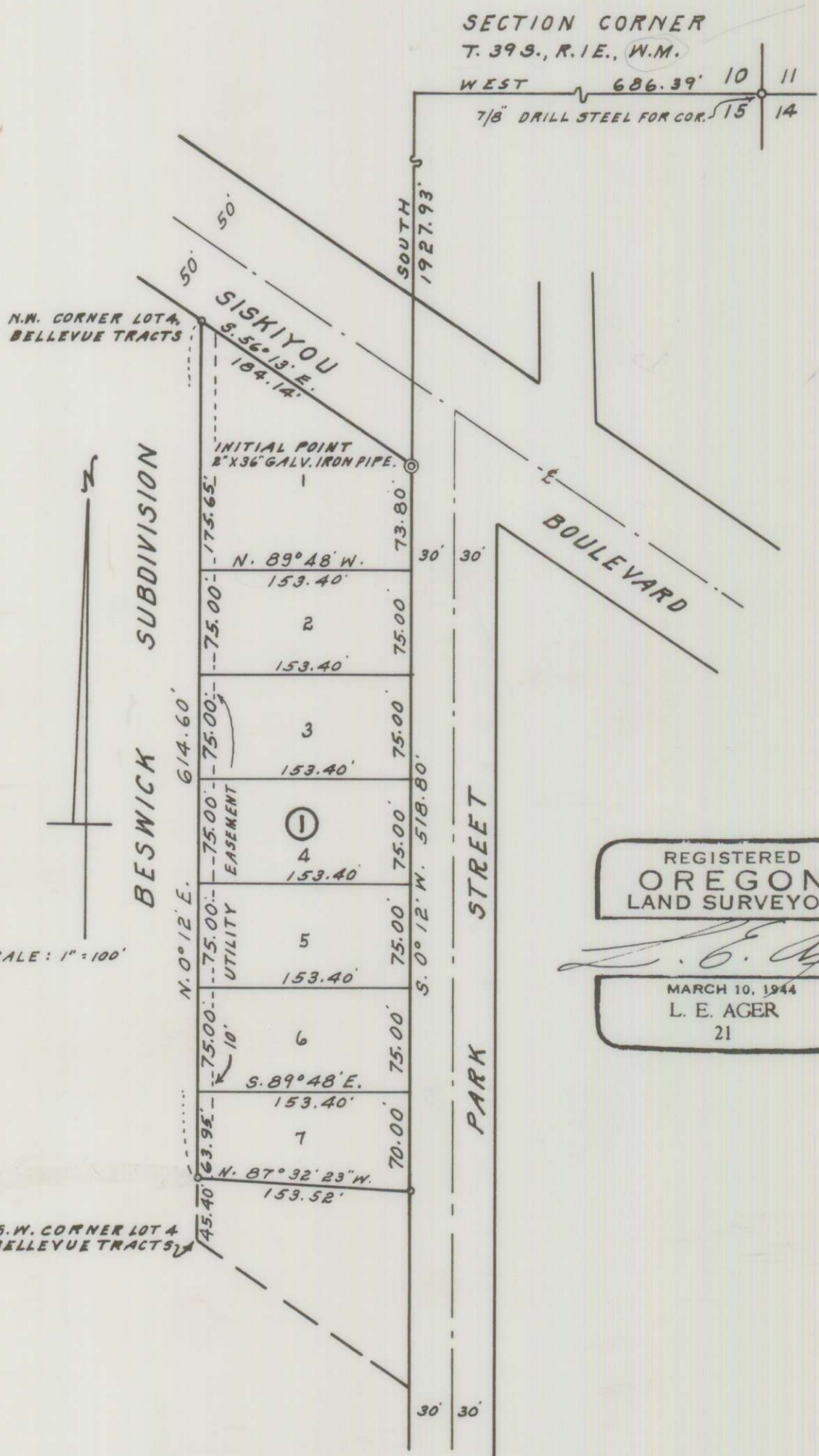
I, L.E. Ager, a duly registered Surveyor of the State of Oregon, being first duly sworn, do hereby certify that I have correctly surveyed and marked with the proper monuments as provided by law, the tract of land hereon shown and the said plat is a correct representation of the same, and the following is an accurate description of the boundary lines: Beginning at a two inch by thirty-six-inch iron pipe at the Northeast corner of Lot 4 of the BELLEVUE TRACTS in the City of Ashland, Jackson County, Oregon, according to the official plat thereof, now of record; thence S. 0° 12' W. along the East line thereof, 518.80 feet; thence N. 87° 32' 23" W. 153.52 feet to a point on the West line of said lot, which point bears N. 0° 12' E. 45.40 feet from the Southwest corner thereof; thence N. 0° 12' E. along the West line of said lot 614.60 feet to the Northwest corner thereof; thence S. 56° 13' E. along the Northeasterly line of said lot, 184.14 feet to the point of beginning.

L. E. Ager
SURVEYOR

Subscribed and sworn to before me this 14th day of January 1966

Maxine C. Hoehner
Notary Public for Oregon

My Commission expires the 13th day of April 1966



Examined and approved by the City of Ashland Planning Commission this 14th day of February 1966

Attest: Hilda L. Kinney Secretary E. N. Dinnemaister President

Examined and approved for the City of Ashland this 15th day of February 1966

Allen A. Aising
City Engineer

Examined and approved by the Talent Irrigation District in regular session this 1st day of February 1966

Attest: W. H. Hooper Secretary Edward Rasmussen President

Examined and approved this 3rd day of March 1966

Thad W. Hatters by Paul McBoethy
County Assessor Chief Deputy

All taxes paid in full to date this 3rd day of March 1966

Edmond Sigurd
County Sheriff

For Order of the County Court approving this plat see Volume 63 Page 646 of County Commissioner's Journal of Proceedings.

By _____ Deputy Emy Aelch County Clerk

Filed for record this 11 day of March 1966 at 10:23 o'clock A.M., and recorded in Volume 10 of Plats at page 31 of Records of Jackson County, Oregon.

By _____ Deputy Emy Aelch County Clerk

I hereby certify that this tracing is an exact copy of the original plat.

L. E. Ager
Surveyor