

GARDEN OF COMMUNION, GARDEN OF OUR SAVIOR & GARDEN OF FAITH  
OF  
MEMORY GARDENS MEMORIAL PARK  
LOCATED IN SECTION 34 . T. 37 S., R. 2 W. W. M.

DEDICATION

Know All Men By These Presents That Memory Gardens Memorial Park Incorporated, an Oregon corporation, being the owner in fee simple of the lands described hereon, has caused the same to be surveyed and set apart for cemetery purposes, all of which is correctly shown by the plat hereon, and has designated said plat Garden of Communion, Garden of Our Savior & Garden of Faith of Memory Gardens Memorial Park.

In Witness Whereof said Memory Gardens Memorial Park Incorporated, has caused these presents to be executed by its President and Secretary who have herunto set their hands and seals this

12<sup>th</sup> day of July, 1954.

Attest: W. S. Ferris  
Secretary

Carroll W. Smith  
President

STATE OF OREGON } ss.  
County of Jackson }

July 12 A.D. 1954.

Personally appeared the above-named Carroll W. Smith, President and William S. Ferris, Secretary of the Memory Gardens Memorial Park Incorporated, and acknowledged the foregoing instrument to be their voluntary act and deed. Before me:

Maag H. Hume  
Notary Public for Oregon

My commission expires the 14<sup>th</sup> day of April, 1957.

Examined and approved by the City of Medford Planning Commission in regular session this the 3<sup>rd</sup> day of May, 1954.

Attest: Edward D. McKinstry  
Secretary

M. J. Kelly  
President

Examined and approved by the Medford Irrigation District in regular session this the 17<sup>th</sup> day of July, 1954.

Attest: J. C. H. S. S. S.  
Secretary

Paul Culbertson  
President

Examined and approved this 19 day of July, 1954.

P. S. Sawyer  
County Assessor

ENGINEER'S CERTIFICATE

STATE OF OREGON } ss.  
County of Jackson }

I, Hugh C. Ingle a duly registered engineer of the State of Oregon, being first duly sworn, do hereby certify that I have correctly surveyed and marked with proper monuments as provided by law the tract of land hereon shown and the said plat is a correct representation of the same, and the following is an accurate description of the boundary lines:

Commencing at the southwest corner of D.L.C. No. 78, Township 37 South, Range 2 West, Willamette Meridian, Jackson County, Oregon; Thence N. 0° 16' W. along the West line of said D.L.C. 466.66 feet and East 20.0 feet to the Initial Point a concrete monument with bronze disc; Thence East 264.78 feet; Thence S. 1° 00' W. 17.32 feet; Thence along the arc of a 15.0 foot radius curve to the left 20.49 feet (the long chord of the curve bears S. 38° 09' E. 18.94 feet); Thence along the arc of a 128.0 foot radius curve to the right 135.38 feet (the long chord of the curve bears S. 47° 00' E. 129.16 feet); Thence along the arc of a 15.0 foot radius curve to the left 20.49 feet (the long chord of the curve bears S. 55° 51' E. 18.94 feet); Thence N. 85° 00' E. 99.79 feet; Thence South 343.22 feet to intersect the South line of said Claim No. 78; Thence S. 89° 52' 30" W. along said South line 503.66 feet to the Southwest corner of said D.L.C. No. 78; Thence N. 0° 16' W. along the West line of said D.L.C. No. 78, 466.66 feet; Thence East 20.0 feet to the Initial Point.

Hugh C. Ingle  
Engineer

Subscribed and sworn to before me this 12<sup>th</sup> day of July, 1954.

My commission expires the 14<sup>th</sup> day of April, 1957.

Howard Gault  
County Sheriff

Examined and recommended for approval of the County Court.

Paul D. Dunning  
County Surveyor

369207

For order of the County Court approving this plat see Volume 37, Page 504, of County Commissioners' Journal of Proceedings.

Robert P. Hopkins  
County Clerk

Filed for record this the 20 day of July, 1954, at 4:00 o'clock P.M. and recorded in 7 Volume of plats at page 18 of records of Jackson County, Oregon.

Bert H. Hopkins  
County Recorder

I hereby certify that this tracing is an exact copy of the original plat filed with the County Clerk.

Hugh C. Ingle  
Engineer

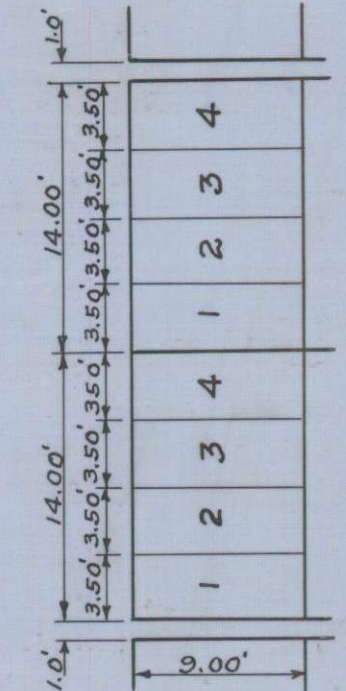


# GARDEN OF COMMUNION, GARDEN OF OUR SAVIOR & GARDEN OF FAITH OF MEMORY GARDENS MEMORIAL PARK LOCATED IN SECTION 34, T.37S.,R.2W.W.M.

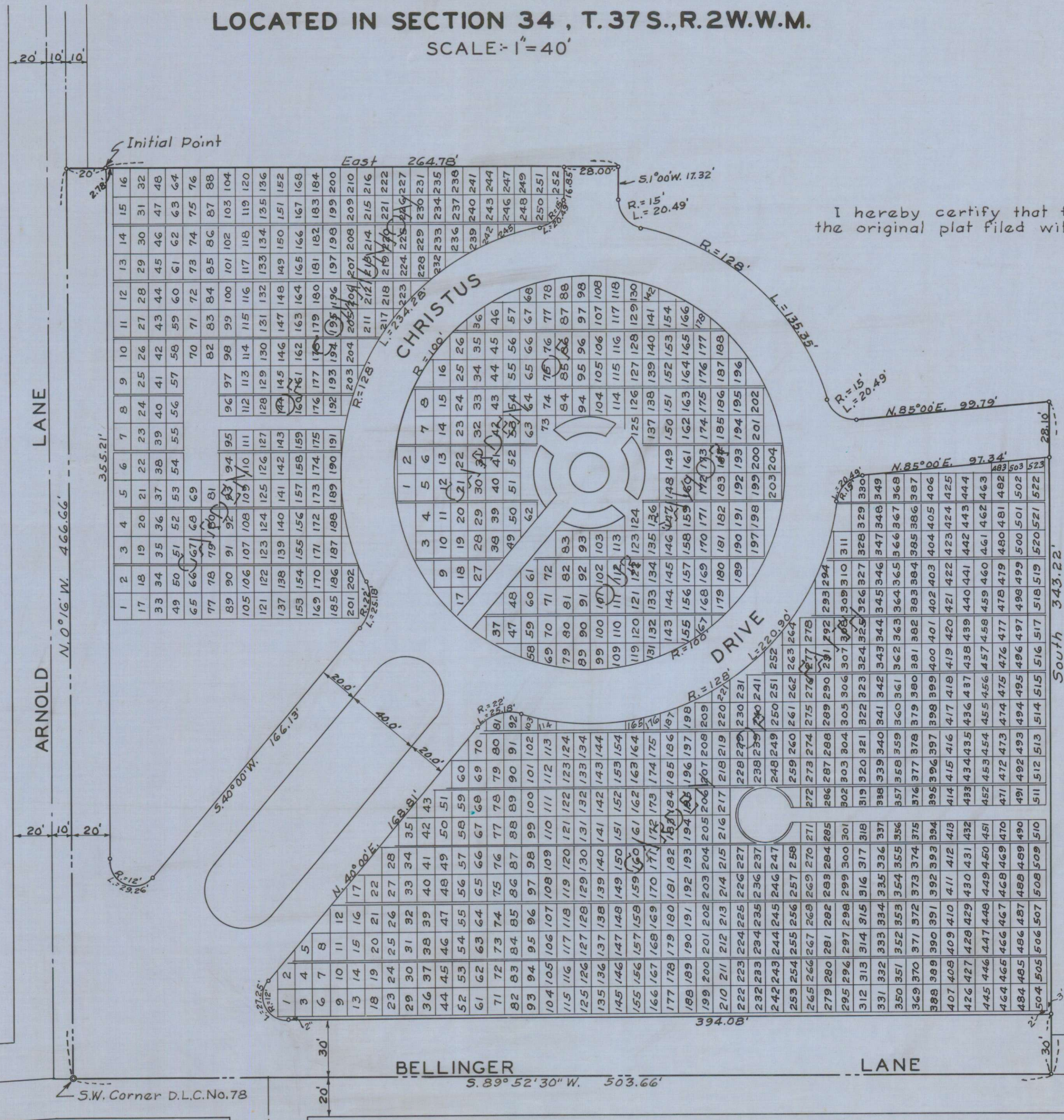
SCALE: 1" = 40'



Meridian by Solar Observation.



Typical Plot Plan  
Scale: 1" = 10'



I hereby certify that this tracing is an exact copy of the original plat filed with the County Clerk.

*Hugh C. Singh*  
Engineer