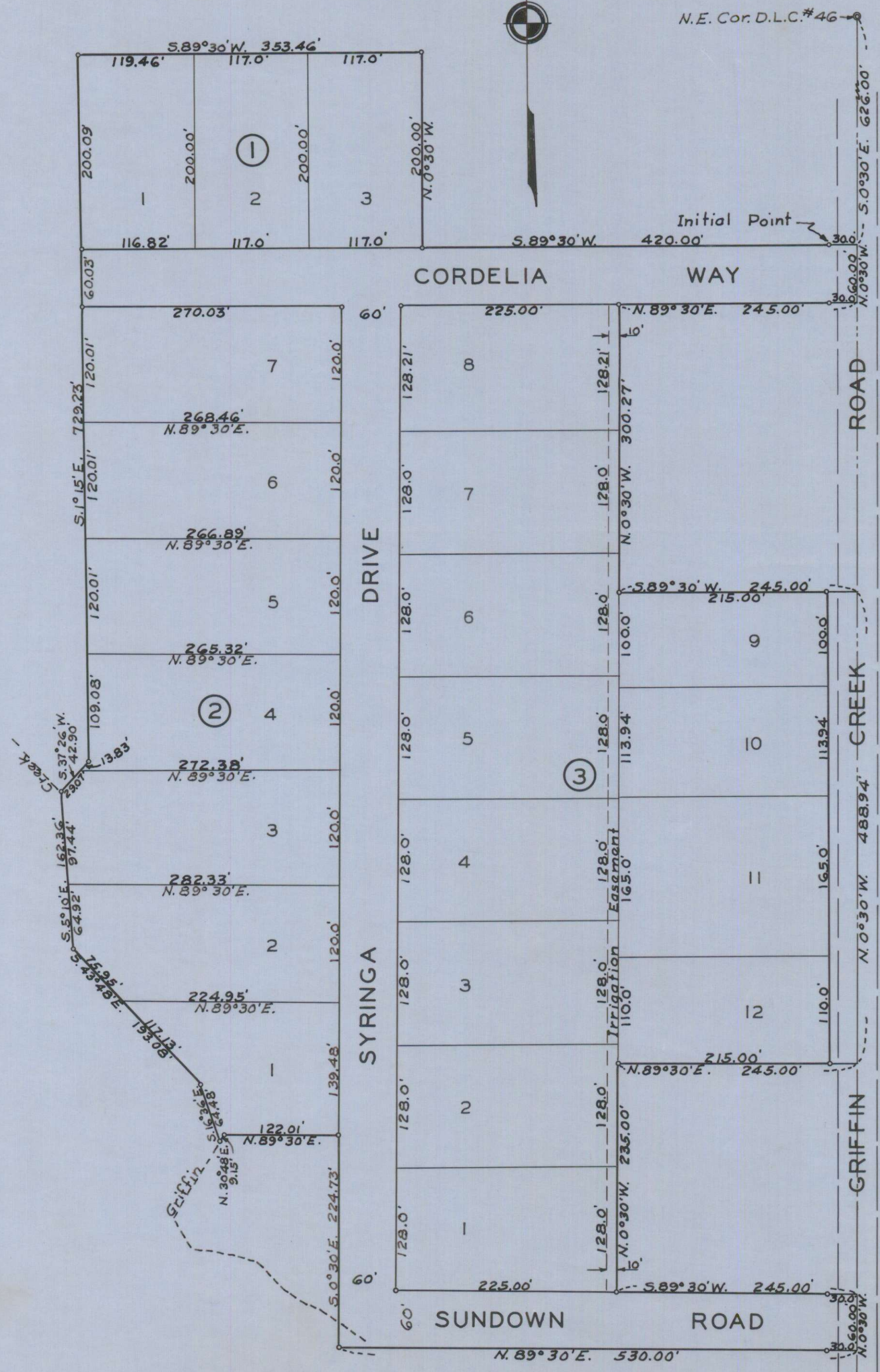


# SUNDOWN SUBDIVISION LOCATED IN SECTION 2, T.38 S., R.2 W. W.M.

SCALE: 1"=100'

Meridian by solar observation.  
5/8" X 30" Iron pins at all block corners.  
1/2" X 24" Iron pins at all lot corners.



## DEDICATION

KNOW ALL MEN BY THESE PRESENTS, That we, Cordella G. Root, Betty Root, Robert W. Root, Doris Root and Donald G. Root, are the owners in fee simple of the lands hereon described, and that we have subdivided the same into lots, blocks and streets as shown hereon, and the number and size of the lots and lengths of all lines are plainly set forth, and that this plat is a correct representation of the said subdivision, and we do hereby dedicate to the public for public use all streets, shown hereon, and we do hereby designate said subdivision as, Sundown Subdivision.

IN WITNESS WHEREOF we have hereunto set our hands and seals this 14 day of June, 1954.

Betty Root  
Cordella G. Root  
Donald G. Root  
Robert W. Root

STATE OF OREGON } ss.  
County of Jackson }  
June 14 A.D. 1954.

Personally appeared the above-named Cordelia G. Root, Betty Root, Robert W. Root, Doris Root and Donald G. Root, and acknowledged the foregoing instrument to be their voluntary act and deed. Before me:

Frank Van Dyke  
Notary Public for Oregon

My commission expires the 24 day of August, 1957.

## ENGINEER'S CERTIFICATE

STATE OF OREGON } ss.  
County of Jackson }

I, J.H. Clabby a duly registered engineer of the State of Oregon, being first duly sworn, do hereby certify that I have correctly surveyed and marked with proper monuments as provided by law the tract of land hereon shown and the said plat is a correct representation of the same, and the following is an accurate description of the boundary lines: Commencing at the N.E. corner D.L.C. No. 46, Township 38 South, Range 2 West, Willamette Meridian, Jackson County, Oregon; Thence S. 0° 30' E. along the east line of said D.L.C. 626.00 feet; Thence S. 89° 30' W. 30.00 feet to a concrete monument with bronze disk for the Initial Point; Thence S. 89° 30' W. 420.00 feet; Thence N. 0° 30' W. 200.00 feet; Thence S. 89° 30' W. 353.46 feet; Thence S. 1° 15' E. 729.23 feet; Thence S. 37° 26' W. 42.90 feet; Thence S. 5° 10' E. 162.36 feet; Thence S. 43° 48' E. 193.08 feet; Thence S. 16° 36' E. 64.48 feet; Thence N. 30° 48' E. 9.15 feet; Thence N. 89° 30' E. 122.01 feet; Thence S. 0° 30' E. 224.73 feet; Thence N. 89° 30' E. 530.00 feet; Thence N. 0° 30' W. 60.00 feet; Thence S. 89° 30' W. 245.00 feet; Thence N. 0° 30' W. 235.00 feet; Thence N. 89° 30' E. 245.00 feet; Thence N. 0° 30' W. 488.94 feet; Thence S. 89° 30' W. 245.00 feet; Thence N. 0° 30' W. 300.27 feet; Thence N. 89° 30' E. 245.00 feet; Thence N. 0° 30' W. 60.00 feet; Thence S. 89° 30' W. 30.00 feet to the Initial Point.

Subscribed and sworn to before me this 14 day of June, 1954  
J. H. Clabby Engineer  
Frank Van Dyke Notary Public for Oregon

My commission expires the 24 day of August, 1957.  
Examined and approved by the City of Medford Planning Commission in regular session this the 14 day of June, 1954

Attest: Edward H. McKinstry Secretary  
M. J. Alroy President

Examined and approved by the Talent Irrigation District in regular session this the 23d day of June, 1954. Attest: G. M. Kent Secretary  
Henry Quinn Vice-President

Examined and approved this 15 day of June, 1954.  
R. S. Sawyer County Assessor

All taxes paid in full to date this the 15 day of June, 1954.  
Howard Sault County Sheriff

Examined and recommended for approval of the County Court.  
367636  
Paul B. Ryan County Surveyor

For order of the County Court approving this plat see Volume 37, Page 454, of County Commissioners' Journal of Proceedings.  
Bernd P. Hopkins Co. Clerk County Clerk  
By Afton Carter, Deputy

Filed for record this the 24 day of June, 1954, at 4:00 o'clock P.M. and recorded in 7 Volume of plats at page 16 of records of Jackson County, Oregon.  
Bernd P. Hopkins County Recorder  
By Afton Carter, Deputy

I hereby certify that this tracing is an exact copy of the original plat filed with the County Clerk.  
J. H. Clabby Engineer

