

BROOKHURST SUBDIVISION-UNIT NO.5

LOCATED IN SECTION 18, TOWNSHIP 37 SOUTH, RANGE 1 WEST OF THE WILLAMETTE MERIDIAN JACKSON COUNTY, OREGON

DEDICATION

KNOW ALL MEN BY THESE PRESENTS, That we, Homesites Incorporated, an Oregon Corporation, are the owners in fee simple of the lands hereon described, and that we have subdivided the same into lots, blocks and streets as shown hereon, and the number and size of the lots and the length of all lines are plainly set forth, and that this plat is a correct representation of the said subdivision, and we do hereby dedicate to the public for public use all streets and utility easements, shown hereon and we do hereby designate said subdivision as, BROOKHURST SUBDIVISION-UNIT NO. 5.

IN WITNESS WHEREOF, we have set our hands and seals this 31st day of August, 1965.

Homesites Incorporated: *Clifford E. Lewis* Secretary *Roy P. Wilkes* President

STATE OF OREGON } SS

County of Jackson } August 31, 1965

Personally appeared the above named Roy P. Wilkes, President and Clifford E. Lewis, Secretary of Homesites Incorporated, an Oregon Corporation, and acknowledged the foregoing instrument to be their voluntary act and deed.

Before me:

Louisa J. Janice
Notary Public for Oregon

My Commission expires the 28 day of February, 1966.

I certify that, pursuant to authority granted to me by the Medford Planning Commission in open meeting of October 14, 1965, the above plat is hereby approved by the Medford Planning Commission. Dated this 18th day of October, 1965.

Attest: *Wayne Stuebel* President

David Brashear
Secretary

Examined and approved this 19th day of October, 1965.

James Shroyer
City Engineer

Examine and approved this 22nd day of October, 1965.

Ihad W. Hartten
County Assessor

All taxes paid in full to date this the 24th day of Oct., 1965.

Dr. Arnold Wright
County Sheriff

639117

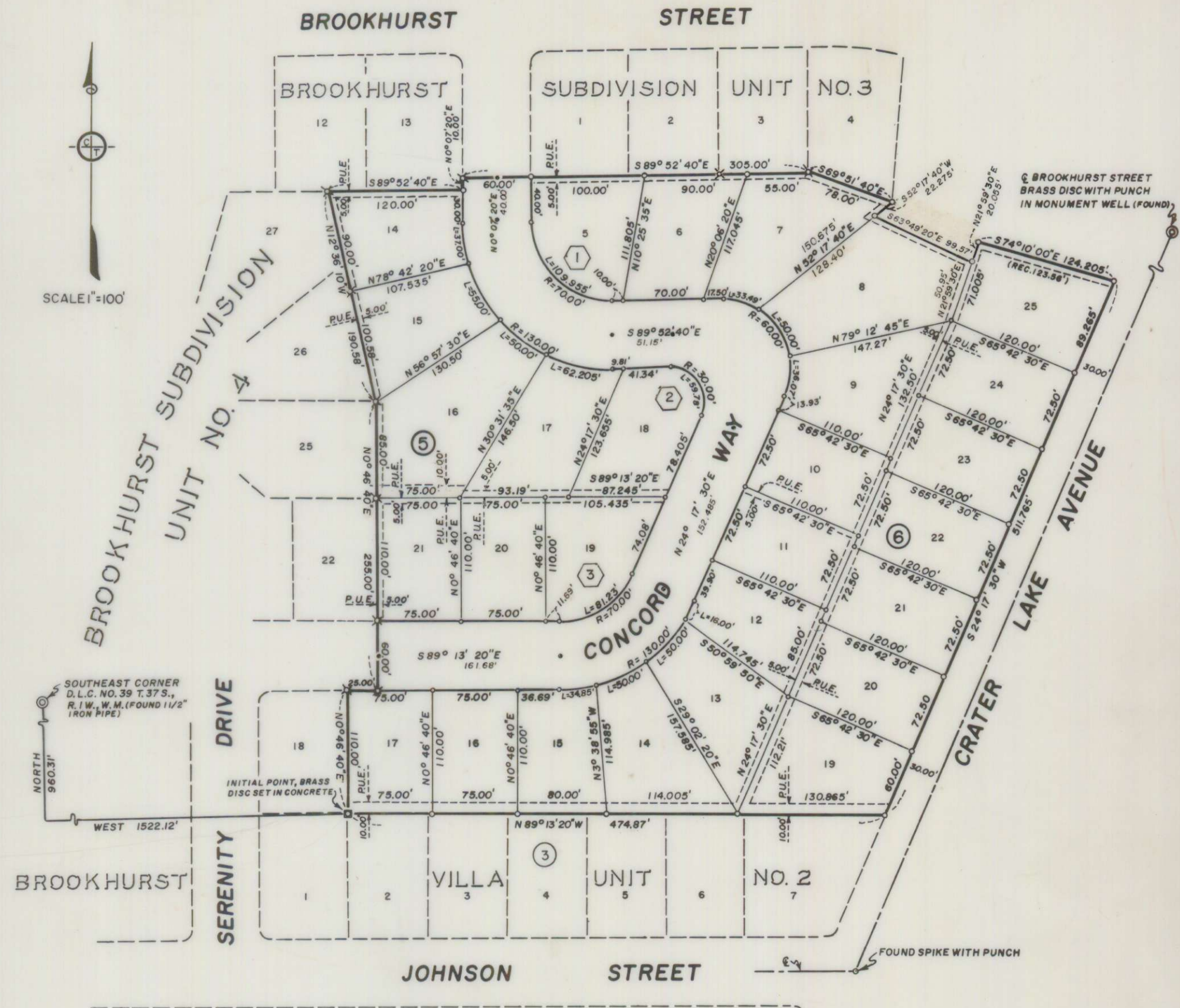
Filed for record this the 9th day of Nov., 1965, at 2:20th Clock P. M. and recorded in Volume 10 of plats at page 22 of records of Jackson County Oregon.

Ann C. Cappel
County Clerk

By _____ Deputy

I hereby certify this tracing is an exact copy of the original plat filed with the County Clerk

J. G. Hoffbuhr
Surveyor



SURVEYOR'S CERTIFICATE

STATE OF OREGON } SS
County of Jackson }

I, J. A. Hoffbuhr a duly registered Surveyor of the State of Oregon, being first duly sworn, do hereby certify that I have correctly surveyed and marked with the proper monuments as provided by law the tract of land hereon shown and the said plat is a correct representation of the same, and the following is an accurate description of the boundary lines:-

COMMENCING AT THE INITIAL POINT OF BROOKHURST SUBDIVISION-UNIT NO. 5 A BRASS DISC SET IN CONCRETE IN TOWNSHIP 37 SOUTH, RANGE 1 WEST OF THE WILLAMETTE MERIDIAN, JACKSON COUNTY, OREGON, SAID POINT ALSO BEING THE INITIAL POINT OF BROOKHURST SUBDIVISION-UNIT NO. 4 (RECORDED), SAID TOWNSHIP AND RANGE, FROM WHICH THE SOUTHEAST CORNER OF DONATION LAND CLAIM NO. 39, SAID TOWNSHIP AND RANGE, BEARS WEST 1522.12 FEET AND NORTH 960.31 FEET; THENCE ALONG THE EAST LINE OF SAID AFOREMENTIONED SUBDIVISION-UNIT NO. 4 AS FOLLOWS; NORTH 0° 46' 40" EAST 110.00 FEET, SOUTH 89° 13' 20" EAST 25.00 FEET, NORTH 0° 46' 40" EAST 255.00 FEET AND NORTH 12° 36' 10" WEST 190.58 FEET TO INTERSECT THE SOUTHLINE OF BROOKHURST SUBDIVISION-UNIT NO. 3 (RECORDED) IN SAID TOWNSHIP AND RANGE; THENCE ALONG THE SOUTHLINE OF SAID AFOREMENTIONED SUBDIVISION-UNIT NO. 3 AS FOLLOWS; SOUTH 89° 52' 40" EAST 120.00 FEET, NORTH 0° 07' 20" EAST 100.00 FEET, SOUTH 89° 52' 40" EAST 305.00 FEET AND SOUTH 69° 51' 40" EAST 78.00 FEET; THENCE SOUTH 52° 17' 40" WEST 22.275 FEET; THENCE SOUTH 63° 49' 20" EAST 99.57 FEET; THENCE NORTH 21° 59' 30" EAST 20.055 FEET; THENCE SOUTH 74° 10' 00" EAST 124.205 FEET (RECORD 123.56 FEET) TO INTERSECT THE WESTERLY RIGHT OF WAY LINE OF CRATER LAKE AVENUE; THENCE ALONG SAID WESTERLY RIGHT OF WAY LINE, SOUTH 24° 17' 30" WEST 511.765 FEET TO INTERSECT THE NORTHLINE OF BROOKHURST VILLA-UNIT NO. 2 (RECORDED) IN SAID TOWNSHIP AND RANGE; THENCE ALONG THE NORTHLINE OF SAID AFOREMENTIONED SUBDIVISION-UNIT NO. 2, NORTH 89° 13' 20" WEST 474.87 FEET TO THE POINT OF BEGINNING.

STREET & CURVE DATA		
1	2	3
Δ = 90° 00' 00"	Δ = 114° 10' 10"	Δ = 66° 29' 10"
R = 100.00'	R = 100.00'	R = 100.00'
S = 100.00'	S = 92.992'	S = 65.546'
L = 141.422'	L = 100.738'	L = 109.658'
L = 127.080'	L = 119.558'	L = 116.040'

J. G. Hoffbuhr
Surveyor

Subscribed and sworn to before me this 30th day of August, 1965.

Mura Mills
Notary public for Oregon

My commission expires the 15th day of November, 1966.

