

CINDERELLA HOMES SUBDIVISION UNIT NO. 1

LOCATED IN DONATION LAND CLAIM NO. 45 & SECTION 3, T. 36 S., R. 1 W., W.M.
JACKSON COUNTY, OREGON

DEDICATION

KNOW ALL MEN BY THESE PRESENTS, That we, R. W. Voris, and Mary Elizabeth Voris and Ron Pitts and Barbara J. Pitts, are the owners in fee simple of the lands hereon described, and that we have subdivided the same into lots, blocks and streets as shown hereon, and the number and size of the lots and lengths of all lines are plainly set forth, and that this plat is a correct representation of the said subdivision, and we do hereby dedicate to the public for public use all streets and utility easements shown hereon, and we do hereby designate said subdivision as:

CINDERELLA HOMES subdivision UNIT NO. 1

IN WITNESS WHEREOF, we have hereunto set our hands and seals this 24 day of April 1965.

R. W. Voris
R. W. VORIS

Mary Elizabeth Voris
MARY ELIZABETH VORIS

Ron Pitts
RON PITTS

Barbara J. Pitts
BARBARA J. PITTS

STATE OF OREGON

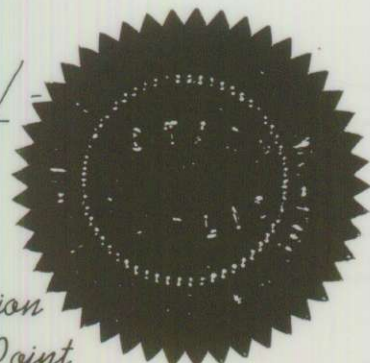
County of Jackson } SS

April 24 A.D. 1965.

Personally appeared the above named R. W. Voris, Mary Elizabeth Voris, Ron Pitts and Barbara J. Pitts and acknowledged the foregoing instrument to be their voluntary act and deed.

Before me:

Mary A. Hays
Notary Public for Oregon



My Commission expires the 7th day of July 1967.

I certify that, pursuant to authority granted to me by the Eagle Point Planning Commission in open meeting of 1965, this plat is hereby approved by the Eagle Point Planning Commission. Dated this 1 day of June 1965.

Attest: *Larry Regatta*
President

Oran C. Chastain
Secretary

Examined and approved by the Little Butte Irrigation Company District in regular session this 1st day of June 1965.

Attest: *B. L. Dornschaff*
President

Marion Nagel
Secretary

Examined and approved this 9th day of August 1965.

Had W. Hatlen
County Assessor

All taxes paid in full to date this the 9th day of August 1965.

Dr. General Light
County Sheriff

Examined and recommended for approval by the County Court this the 30th day of August 1965.

Jack E. Boyden
County Surveyor

For Order of the County Court approving this plat see Volume _____ page _____ of County Commissioners' Journal of Proceedings.

By: _____ Deputy

Emmy Relel
County Clerk

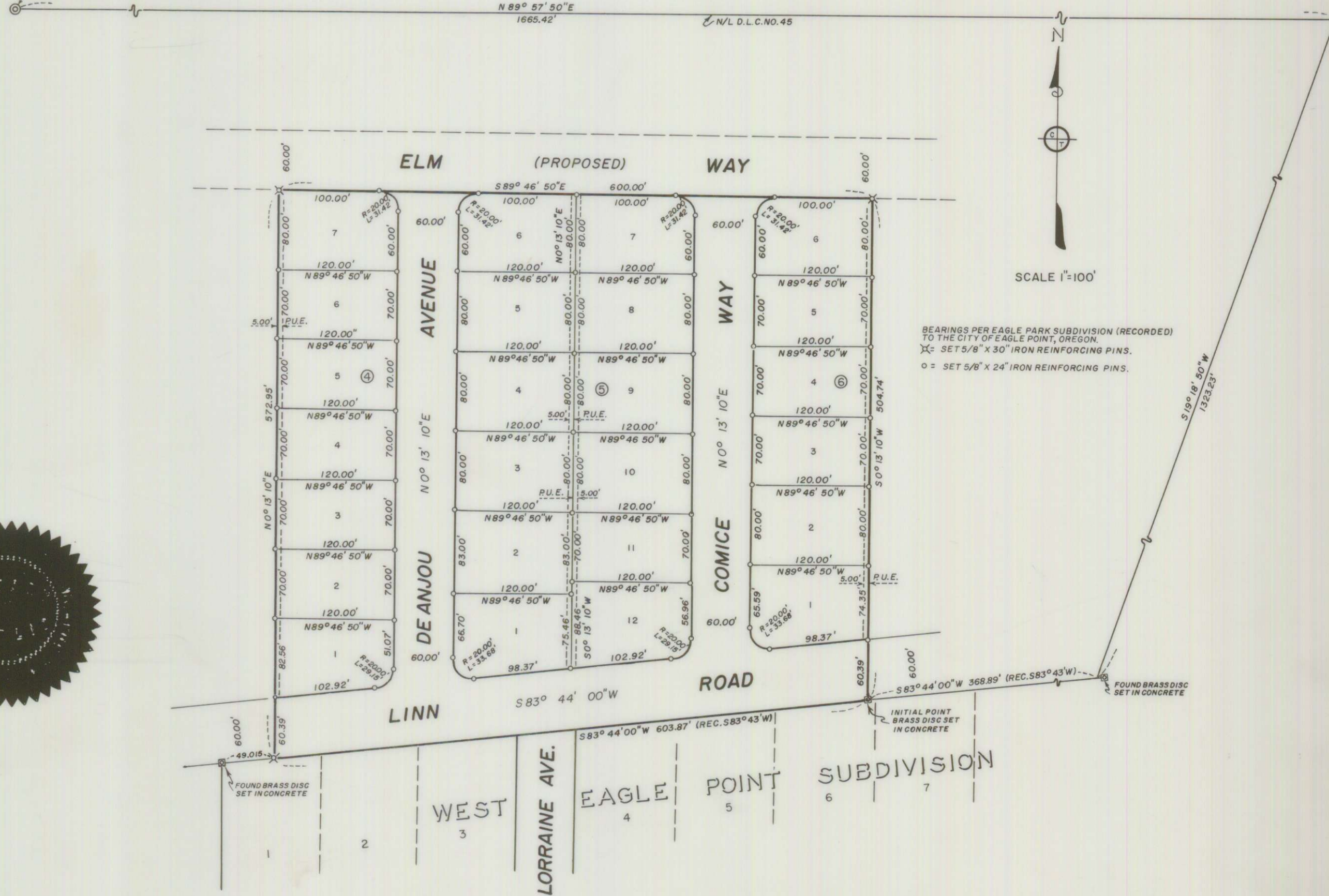
633998

Filed for record this the 1 day of September 1965, at 10:17 O'Clock A.M. and recorded in Volume 10 of plats at page 14 of records of Jackson County, Oregon.

By: _____ Deputy

Emmy Relel
County Clerk

NORTHWEST CORNER D.L.C. NO. 45, T. 36 S., R. 1 W., W.M.
(FOUND 3/4" IRON PIN)



SURVEYOR'S CERTIFICATE

STATE OF OREGON } SS
County of Jackson

J. J. A. Hoffbuhr a duly registered Surveyor of the State of Oregon, being first duly sworn, do hereby certify that I have correctly surveyed and marked with the proper monuments as provided by law the tract of land hereon shown and the said plat is a correct representation of the same, and the following is an accurate description of the boundary lines:

COMMENCING AT THE NORTHWEST CORNER OF DONATION LAND CLAIM NO. 45, IN SECTION 3, TOWNSHIP 36 SOUTH, RANGE 1 WEST OF THE WILLAMETTE MERIDIAN, JACKSON COUNTY OREGON; THENCE ALONG THE NORTH LINE OF SAID CLAIM, NORTH 89° 57' 50" EAST 1665.42 FEET; THENCE SOUTH 19° 18' 50" WEST 1323.23 FEET TO INTERSECT THE NORTH LINE OF WEST EAGLE POINT SUBDIVISION (RECORDED); THENCE ALONG THE NORTH LINE OF SAID AFOREMENTIONED SUBDIVISION, SOUTH 83° 44' 00" WEST (RECORD SOUTH 83° 43' WEST) 368.89 FEET TO THE INITIAL POINT, A BRASS DISC SET IN CONCRETE AND BEING THE TRUE POINT OF BEGINNING; THENCE CONTINUE SOUTH 83° 44' 00" WEST (RECORD SOUTH 83° 43' WEST) 603.87 FEET; THENCE NORTH 0° 13' 10" EAST 572.95 FEET; THENCE SOUTH 89° 46' 50" EAST 600.00 FEET; THENCE SOUTH 0° 13' 10" WEST 504.74 FEET TO THE INITIAL POINT.

J. J. A. Hoffbuhr
Surveyor

Subscribed and sworn to before me this 15th day of April 1965

Margaret Davis
Notary public for Oregon

My commission expires the 7th day of September 1968.

